

## **APPENDIX E**

### **Summary of Public Outreach and Comments**



## Public Outreach

Public outreach for the Dover/Kent County Metropolitan Planning Organization's 2030 Long Range Transportation Plan began in January 2004, when the MPO conducted a survey of area residents by posting it on the MPO web site and going to three different locations in the MPO area to solicit in-person responses. The media release advertising the on-line survey and resultant news articles are shown below.

### *For Immediate Release*

**Date:** January 3, 2004

**Contact:** Ava M. Perrine  
Public Affairs Officer  
aperrine@mail.dot.state.de.us

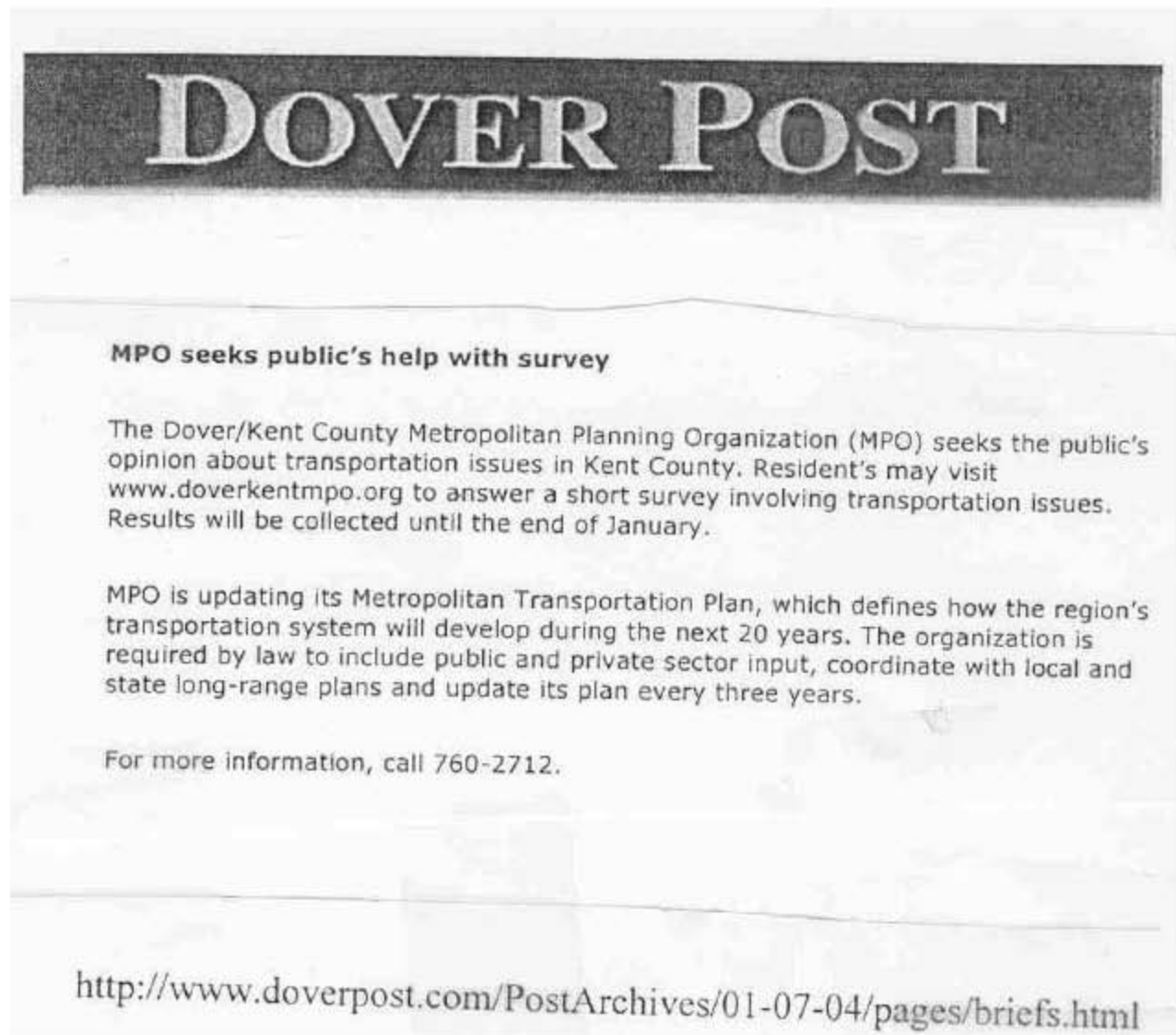
### **Metropolitan Transportation Plan Needs Your Help**

Dover (DE)-The Dover/Kent County Metropolitan Planning Organization (MPO) wants to know what you think about transportation issues in Kent County. The MPO is currently updating its Metropolitan Transportation Plan, which defines how our region's transportation system will develop over 20 years.

Public participation in the Plan's development is required by law and stipulates that the MPO's process must: include input from public and private sectors, coordinate with local and state long range plans, and be updated every three years. In order to learn as much as possible about how Kent Countians feel about transportation issues a short survey has been developed.

During the month of January only, Kent County residents are asked to log onto the MPO's website ([www.doverkentmpo.org](http://www.doverkentmpo.org)) and answer a few quick questions. The MPO coordinates with federal, State, County and municipal decision-makers regarding transportation issues. The public's valuable responses will be used to help plan how to meet current and future transportation needs. Call (302) 760-2712 for more information.





The results of the survey are discussed in Chapter 4.

The survey as well as technical analysis provided the basis for the final plan recommendations. Contents of the final draft of the 2030 Plan were first made available to the public on March 23, 2005, as a two-page insert in the *Dover Post*, *Smyrna-Clayton Sun Times*, *The Airlifter* and *The Milford Beacon*. A copy of the insert follows.





# Dover/Kent County Metropolitan Planning Organization

*Moving Forward Together*

*A Profile of the MPO's Long Range Transportation Plan*

**The Dover/Kent County Metropolitan Planning Organization (MPO) is the federally designated agency responsible for coordinating transportation planning and programming in Kent County, Delaware. The MPO's planning area includes all of Kent County including portions of Milford and Smyrna located in Sussex and New Castle counties. Plans and programs adopted by the MPO outline how federal transportation funds will be spent.**

## Introduction

The Long Range Transportation Plan defines how the region's transportation system will develop over 20-years. The plan must be coordinated with local and state long-range plans.

The 2030 plan provides a vision, strategies and actions to meeting anticipated transportation needs through the year 2030. The LRTP was assembled based on the input of residents, business people and government agencies. This document is a summary of its contents.

Member Agencies of Dover/Kent County MPO Council:

- Delaware Department of Transportation
- Delaware Transit Corporation
- Office of the Governor of Delaware
- City of Dover
- Kent County Municipality- elected every two years
- Federal Highway Administration (non voting)
- Federal Transit (non voting)

## Challenges

The County's population is expected to grow by 25% between 2000 and 2030; employment is expected to grow by 18%. The Dover area will continue to develop as the predominant employment center, but dispersed development to other centers is expected in areas such as Milford and Smyrna. These population and employment trends mean more people traveling to more places. The following travel trends increase the load on the region's transportation system.

- More workers are choosing to drive alone
- Fewer workers are choosing to walk, bicycle or carpool
- More people are riding transit, but not to work
- The number of vehicles owned by each household is increasing, with most households owning at least two vehicles
- The annual number of vehicle miles traveled has increased at a greater rate than the total roadway mileage, vehicles or drivers
- Average travel time for work trips has been steadily increasing

Transportation Mode

Federal Transit (non voting)

# Vision

## 2030 Vision "Moving Forward Together"

The future transportation system in the Dover/Kent County Metropolitan region is safe, supports economic development, allows easy access and mobility for people and goods to reach their destinations and serves desired growth patterns. A transportation system that serves the public's needs while reinforcing the unique character and quality of life of each community while preserving the region's natural resources.

### Support for the Vision

Transportation will play a crucial role in achieving the Regional Vision. The vision is further defined by five goals with transportation objectives.

#### Economic Development

Goal: To strengthen the local economy.

#### Quality of Life

Goal: To improve quality of life.

#### Growth Management / Land Use Coordination

Goal: Support desired land use and effective growth management.

#### Access, Safety and Mobility

Goal: To improve access and mobility while ensuring the safety of all citizens.

#### Transportation Network (Infrastructure)

Goal: To safely and efficiently transport people and goods.

### Planning Process

The plan update that was prepared as a result of this planning process is consistent with DelDOT's Statewide Long-Range Transportation Plan.

### Transportation Needs

Deficient and Obsolete Bridges	27
Linear Miles of Roadway in Fair - Poor Condition	516
Transit Passenger Trips Annually	308,716
Total Number of Vehicle Crashes Annually	2,610
Public Park-and-Ride and Park-and-Pool Facilities	11
Percent Drive Alone	66%
Carpools	28%
Number of Public Use Airports	6
Miles of active Rail Freight Lines	56
1 mile of Sidewalk to 1.25 miles of Urban Roadway	

### Projections

Community Characteristic	2000 Figure	2030 Projection
Population	136,993	183,576
Households	47,224	63,432
Employment	61,729	73,499
Percent of Land that is Residential	15%	21%

### Want to Know More?

The Dover/Kent County MPO's Long Range Transportation Plan is available upon request. To receive a copy, call, write or fax your request to:

Dover/Kent County MPO  
 P.O. Box 383  
 Blue Hen Corporate Center, Suite 5N  
 Dover, DE 19903-03983  
 (302) 739-5359  
 FAX (302) 739-6340



# Strategies

Five fundamental strategies form the framework of the Long-Range Transportation Plan and subsequent transportation actions. They are ranked in order of their relative importance and impact on the County and its residents.

### Fundamental Strategies:

1. Preserve and maintain the existing transportation system
2. Improve the management of the existing transportation system
3. Develop and expand other modes of transportation
4. Provide additional roadway system capacity
5. Focus transportation investments

### Projects

To address the region's transportation needs, the MPO recommends a combination of policies, studies, and highway, transit, bicycle, sidewalk and technological improvements. The projects are grouped into five year increments for implementation. Locations of projects in these five-year groups are shown on the map to the right. A complete list of the plan's recommendations is available from the MPO office.

### Preserving the Region's Air Quality

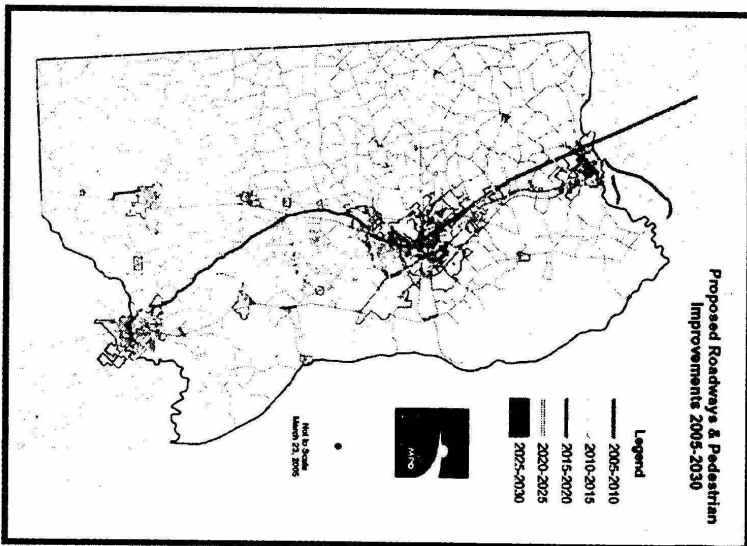
The transportation system recommended by this plan cannot generate more pollution than allowed by DNEEC's state implementation plan. Analysis of the emissions generated by this transportation system showed that they will remain within the budget established by DNEEC.

### DRAFT Kent County Emissions Summary

Vehicle Miles of Travel (VMT) & Total Emissions by Year (in Tons per summer day)- KENT COUNTY				
Year	VMT	VOC*	Budget NOx**	Budget
2005			5.14	8.42
2010	5,371,546	4.46	5.33	
2020	5,888,382	2.60	2.01	
2030	6,669,658	2.53	1.60	

\*VOC: Volatile Organic Compounds

\*\*NOx: Nitrogen Oxide



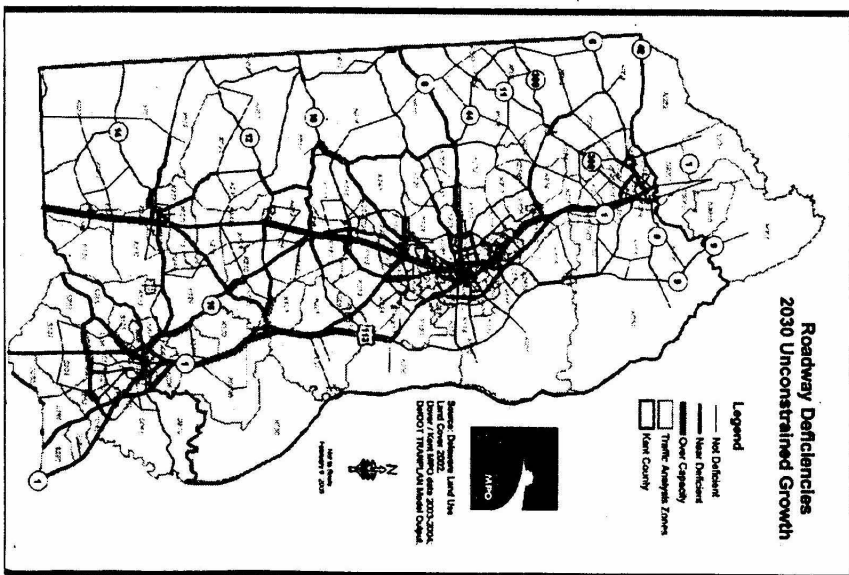
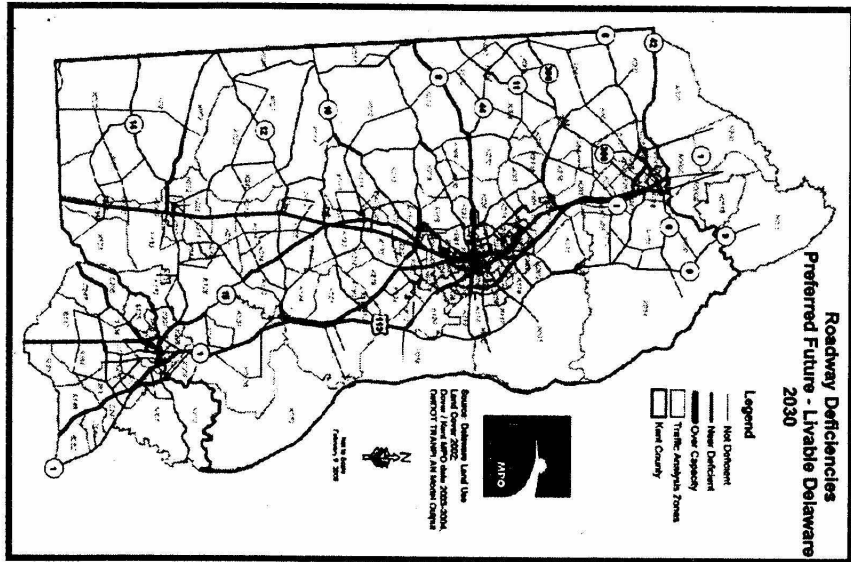
**Costs**  
The L RTP is more than just a wish list. A cost estimate was developed and potential funding sources were examined to determine whether or not funding would be reasonably available to implement the plan. The estimated cost of implementing the new facilities and services proposed in the plan is \$702 million over 25 years. A review of historical funding sources and levels shows that \$985 million should be reasonably available during the life of the plan.



www.doverpost.com

The Dover Post, Wednesday, March 30, 2005 Page 15B

The maps below show the potential impact of future growth on the region's roadways. Roads shown in black will be generally free of congestion and will handle future traffic with few problems. Blue roads will experience congestions more often, particularly during heavy travel times. Red roads will always experience congestion during heavy travel times. They will also tend to have more safety issues.



As a result of the publication of this insert, two copies of the draft plan and one copy of the maps were requested by the public. No comments about the plan or the air quality conformity determination were received from any of these individuals.

The first public presentation of the plan was made before the Kent County Levy Court on April 5, 2005. Levy Court commissioners asked questions about rail freight service and corridor preservation, which the MPO executive director answered at the meeting. No questions were asked about the air quality conformity determination. This presentation generated two newspaper articles, which included the MPO's request for public comments.

These articles, shown below, prompted visits from two gentlemen, on different occasions regarding specific planning studies. The first gentleman expressed his support for instituting commuter rail service between Dover and Wilmington and was concerned that any new service be adequately monitored and promoted. The second gentleman was inquiring about a meeting that was to be held by DeIDOT and Kramer and Associates regarding the West Dover Connector Study. He left with a copy of the Long Range Transportation Plan, but did not follow-up with any questions or comments.

The first week of April, the plan was also posted on the MPO's web site, [www.doverkentmpo.org](http://www.doverkentmpo.org). All information about the plan sent to the public directed them to the web site.

Delaware State News, Thursday, April 7, 2005

## Panel unveils transportation plan

Delaware State News

DOVER — More sidewalks, community transit services, bicycle lanes and transit hubs are projects that the Dover-Kent County Metropolitan Planning Organization could recommend for the area for the next 25 years.

A proposed \$1.6 billion plan also could recommend continuing new road construction, expanding DART service and



**Juanita Wieczorek**

adding rail transportation service in its long-range transportation outline.

MPO Executive Director Juanita Wieczorek presented the recommended actions and more at Tuesday night's Kent County Levy Court committee meeting.

Ms. Wieczorek said she discussed the plan with Levy Court because it is an MPO member and because the county's governing body makes decisions on land use and zoning, which affects transportation.

"They're the main land use agency," Ms. Wieczorek said.

Transportation and land use, she said, go hand in hand.

She said she wanted to give commissioners a chance to ask

questions because their participation in the process is important.

She also hoped commissioners would keep the plan in mind when making decisions on developments and rezoning.

The presentation highlighted the plan's vision, transportation trends, needs, population and employment, land use, fundamental strategies and recommended actions and projects.

Some of the other suggested projects include signal upgrades in downtown Dover and along U.S. 13 and 113, better advertising for ride sharing, and getting public transit service in other municipalities.

Ms. Wieczorek said cities such as Milford are getting large

enough that they could sustain shuttle service.

She said the cost of proposed projects in the long-range plan is quite a bit higher than the last study, which projected \$667 million if all the projects were done over 25 years from 2000 to 2025.

There will be a public meeting and public advisory committee recommendation April 26.

Anyone who wants to look at the study and comment on it must do so before May.

The study can be viewed at [www.doverkentmpo.org](http://www.doverkentmpo.org).

Post comments on this issue at [newsblog.info@0406](mailto:newsblog.info@0406).

Staff writer Kate House-Layton can be reached at 741-8242 or [khouse@newszap.com](mailto:khouse@newszap.com).

The plan was presented to the MPO Council and committees in April and May. Prior to each of these meetings, media releases and public notices, with agenda, were sent to electronic and print media outlets, municipal buildings and public libraries.

Technical Advisory Committee met on April 13 and 27. Both of these meetings were open to the public and advertised as such. No members of the public offered any comments about the plan or the air quality conformity determination. Media releases and public notices are shown below.



**NEWS RELEASE**

*For Immediate Release*

**Date:** April 6, 2005

**Contact:** Ava M. Perrine  
Public Affairs Officer  
[aperrine@mail.dot.state.de.us](mailto:aperrine@mail.dot.state.de.us)

**MPO Technical Advisory Committee Plans to Meet**

Dover (DE)- The Technical Advisory Committee (TAC) of the Dover/Kent County Metropolitan Planning Organization (MPO) will meet on Wednesday, April 13, 2005 from 9:15 to 11:30 AM at the MPO's office, Suite 208 of the Blue Hen Corporate Center -Route 113, Dover. Among the TAC's revised agenda items are its proposed fiscal year 2006-2008 Transportation Improvement Program, proposed 2030 Long Range Transportation Plan and proposed fiscal year 2006 Unified Planning Work Program. The public is invited. Please call the MPO at (302) 760-2712 for more information.

Page 14A The Dover Post, Wednesday, April 27, 2005

**MPO's Technical Advisory Committee to meet**

The Technical Advisory Committee of the Dover/Kent County Metropolitan Planning Organization will hold a special meeting from 1:15 to 3 p.m. Wednesday, April 27, at the MPO's office, Suite 210 of the Blue Hen Corporate Center on Route 113 in Dover. The TAC's agenda items are its proposed fiscal year 2006-2008 Transportation Improvement Program and proposed 2030 Long-Range Transportation Plan. The public is invited. For more information, call the MPO at 760-2712.





**Dover/Kent County Metropolitan Planning Organization**  
P.O. Box 383, Dover, Delaware 19903 (302) 760-2713 FAX: (302) 739-6340  
<http://doverkentmpo.org>

# MEETING NOTICE

## TECHNICAL ADVISORY COMMITTEE (TAC)

### BI-MONTHLY MEETING

**WEDNESDAY, APRIL 13, 2005**  
**9:15 AM - 11:30 AM**

**DOVER/KENT COUNTY MPO**  
**CONFERENCE ROOM / SUITE 210**  
**BLUE HEN CORPORATE CENTER**

**THE PUBLIC IS WELCOME AND  
ENCOURAGED TO ATTEND**

**For further information please call the  
Dover/Kent County MPO @ (302) 760-2713**

**NEWS RELEASE**

*For Immediate Release*

**Date:** April 6, 2005

**Contact:** Ava M. Perrine

Public Affairs Officer

[aperrine@mail.dot.state.de.us](mailto:aperrine@mail.dot.state.de.us)

**MPO Technical Advisory Committee Plans to Meet**

Dover (DE)- The Technical Advisory Committee (TAC) of the Dover/Kent County Metropolitan Planning Organization (MPO) will hold a special meeting on Wednesday, April 27, 2005, 1:15-3:00 p.m. at the MPO's office, Suite 210 of the Blue Hen Corporate Center -Route 113, Dover. The TAC's special agenda items are its proposed fiscal year 2006-2008 Transportation Improvement Program and proposed 2030 Long Range Transportation Plan. The public is invited. Please call the MPO at (302) 760-2712 for more information.

The meeting designated to gather public comments on the plan was the April 26, 2005, Public Advisory Committee meeting. The meeting was held from 7:00 pm to 9:00 pm at the Dover Police Station. Two members of the public attended the meeting. They did not ask any questions about the Long Range Transportation Plan or the air quality conformity determination. They were interested in the West Dover Connector Study. The media release and meeting notice for this meeting follow.

## NEWS RELEASE

For Immediate Release

**Date:** April 14, 2005

**Contact:** Ava M. Perrine

Public Affairs Officer

aperrine@mail.dot.state.de.us

### **Dover/Kent MPO PAC Hosts Public Meeting**

Dover (DE)- The Dover/Kent County Metropolitan Planning Organization (MPO) needs the public's help. The MPO's Public Advisory Committee (PAC) will host a public meeting on Tuesday, April 26, 2005, 7:00-9:00 p.m., in the Public Assembly Room of the Dover Police Department. The PAC invites review and comments regarding its proposed FY 2006-2008 Transportation Improvement Program (TIP) and Proposed 2030 Long Range Plan.

The TIP comprises projects for which federal transportation funds will be requested and are recommended for inclusion in the State's Capital Transportation Program. Updated every three years, the Long Range Plan acts as a blue-print for guiding elected officials toward meeting the transportation needs of their constituencies--us. It spells out how the county's transportation resources should be managed and serves as the framework for transportation investment decisions through the year 2030.

Mandated by federal law, the MPO is responsible for planning and prioritizing transportation improvements required to keep Kent County eligible for federal highway and transit monies.

Comments will be accepted for the TIP until Friday, May 14, 2005. Comments regarding the Plan will be accepted through Thursday, May 13, 2005. Both documents are available for review on the MPO's website [www.doverkentmpo.org](http://www.doverkentmpo.org). Call (302) 760-2712 for more information.



**Dover/Kent County Metropolitan Planning Organization**  
P.O. Box 383, Dover, Delaware 19903 (302) 760-2713 FAX: (302) 739-6340  
<http://doverkentmpo.org>

# **MEETING NOTICE**

## **PUBLIC ADVISORY COMMITTEE (PAC)**

### **BI-MONTHLY MEETING**

**Tuesday, April 26, 2005  
7:00 – 9:00 PM**

**DOVER POLICE STATION  
PUBLIC ASSEMBLY ROOM**

**400 South Queen Street / Dover, DE**

**THE PUBLIC IS WELCOME AND  
ENCOURAGED TO ATTEND**

**For further information please call the  
Dover/Kent County MPO @ (302) 760-2713**



The plan was adopted by the Dover/Kent County MPO Council at its meeting on May 4, 2005. No members of the public asked any questions or made any comments about the plan or the air quality conformity determination. The meeting notice for this meeting follows.



**Dover/Kent County Metropolitan Planning Organization**  
P.O. Box 383, Dover, Delaware 19903 (302) 760-2713 FAX: (302) 739-6340  
<http://doverkentmpo.org>

# **MEETING NOTICE**

## **MPO COUNCIL**

### **BI-MONTHLY MEETING**

**MAY 4, 2005**  
**3:00 – 5:00 PM**

**DOVER/KENT COUNTY MPO  
CONFERENCE ROOM  
BLUE HEN CORPORATE CENTER  
SUITE 210**

**THE PUBLIC IS WELCOME AND  
ENCOURAGED TO ATTEND**

**For further information please call the  
Dover/Kent County MPO @ (302) 760-2713**

