

Delaware 8 Study Recommends Changes

The public is invited to comment on the Dover/Kent County MPO's draft report of the Delaware 8 Concept Plan and Operation Study.

The study considered improvements to increase safety and traffic flow in west Dover. Its recommendations result from detailed examinations of traffic patterns, various forms of transportation, crash statistics, land use in the region from the present to 2030, environmental concerns, and providing an attractive entrance to western Dover. Among the recommendations are:

Access to a proposed high school site: two entrance/exits are identified; the easterly opposite Stony Drive, which also would include a new traffic light. The westerly one would branch off a proposed new roadway connecting Delaware 8 and Hazlettville Road; there would be another connecting road to Artis Drive.

New roadways: one is

New Bus Schedules

Attention bus riders: there is a new DART First State schedule effective as of Dec. 13. There are a few minor time changes on Route 101 in Dover and on Route 301 from Dover to Wilmington. Be sure to pick up a new schedule.

The first 101 service will leave the Water Street terminal at 6 a.m. and the last one at 5:30 p.m. The first bus to Wilmington will leave at 7:18 a.m. and last one will depart at 5 p.m.

proposed to link the Gateway West shopping center with the commercial/industrial complex on Commerce Way; it also would provide access to North Street/Hazlettville Road.

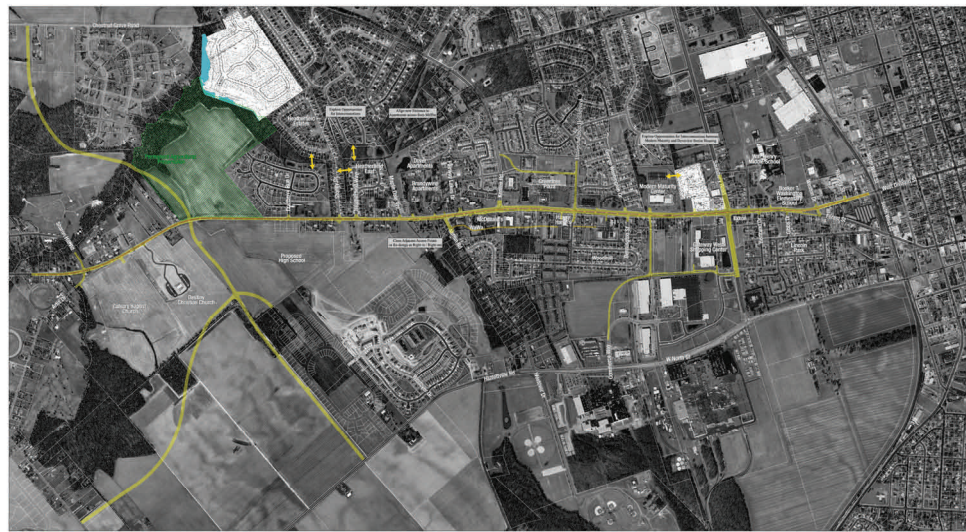
Another proposed road would connect Delaware 8

ings to conform to the Americans with Disabilities Act. It also would offer a break down area for disabled vehicles.

Pedestrian crossings, especially those near shopping centers and schools, would receive highly-visible cross-

lights and replacement with signals that control left turns.

Future considerations: the report suggests the City of Dover and Delaware Department of Transportation explore minor highway connections linking Stoney



DELAWARE ROUTE 8 CONCEPT STUDY

STUDY AREA
KENT COUNTY, DELAWARE
JUNE, 2007

with Chestnut Grove Road, relieving traffic from Kenton Road, and Hazlettville Road.

Realignment of Artis Drive: to place the presently skewed intersection directly opposite Sharon Hill Road.

Realignment of Brandywine Drive: to bring it opposite the traffic light at Mifflin Road. Turn lanes from Mifflin Road to Delaware 8 also would be widened.

Delaware 8 improvements: to provide shoulders, sidewalks where they are missing, bicycle paths, safe bus stops, and repair cross-

walks and pedestrian push buttons with signal heads. The report cites the need for, and installation of, safety devices and pedestrian islands to protect walkers.

At the intersection of Delaware 8 and Forest Street, the report endorses the installation of a traffic light and removal of one at Ridgley Street.

Because left turns sites register the largest number of vehicular crashes, the study recommends the removal of permissive (flashing) left turn traffic

Drive, Heatherfield Way and Cranberry Run; between the Modern Maturity Senior Center and senior housing at neighboring Dove View; a two-way connection from McDonalds to Kenton Road; and one from Mifflin Road to Independence Boulevard, with an extension to Bennington Street.

Beautification: The study recommends adoption of the City of Dover's "commercial boulevard" landscaping program that is

See DE8 pg. 6

Public Participation Plan Adopted

A Public Participation Plan, which outlines how the Dover/Kent County Metropolitan Organization (MPO) provides links to and from the public, was adopted by the MPO Council at its November meeting. It is subject to approval by the Federal Highway Administration (FHWA.)

Based on requirements of Safe Accountable Flexible Efficient Transportation Equity Act - A Legacy for Users (SAFETEA-LU), the federal transportation law passed by Congress in 2005, the policy details how the MPO provides information using media, direct mailings, and other

ways to contact people and organizations.

Last June, the MPO's Public Advisory Committee (PAC) began the process when it met with people representing local residents, public organizations, not-for-profit service groups, and other interested persons to exchange ideas. Some of their suggestions were incorporated in the final document.

The policy includes a description of how the MPO was created and its purpose. Membership on the decision-making Council and its two advisory committees – Techni-

cal, composed of professionals from various organizations, and Public, made up of assorted local groups appointed by the state, county and City of Dover – is detailed.

How information is transmitted to the public and how the MPO solicits comments from people are the main thrusts of the policy. There is an emphasis on reaching and hearing from the underserved, such as minorities and the disabled.

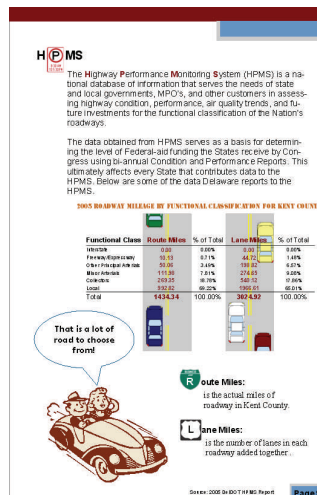
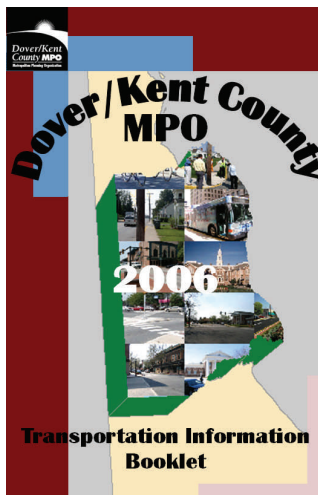
The MPO must provide information on regional, state and local transportation plans, as required by the federal regulations.

There also is an account

of projects and services conducted by the MPO.

Other local and state groups with an interest in transportation are part of the MPO's outreach. They are asked to comment on information MPO proposals.

The Public Participation Plan is available at the City of Dover and Kent County public libraries, and on the M P O website www.doverkentmpo.org. Copies may also be obtained by calling the MPO at (302) 270-2713. The Public Participation Policy is a joint effort by staff and PAC members with assistance from Gregory Layton.



Dover/Kent County MPO 2006 Transportation Information Booklet

The Dover/Kent County MPO has put together a booklet of transportation information exclusively for the Kent County region. The booklets were developed as a companion to the Department of Transportation's annual transportation facts booklet, which focuses on state-level data. The MPO, over the course of several months, searched out and collected the transportation-related data.

The MPO data booklet is designed to be a professional product that is informative and creative at the same time. The data is presented in a way that is fun and innovative, yet meaningful and useful to the reader. The booklet presents information about all modes of transportation. For more information on obtaining a copy please contact Josh Waltz at (302) 760-2714 or joshua.waltz@state.de.us

Levy Court Awards Grant to MPO

The Kent County Levy Court awarded the MPO a \$1,000 Community Services grant this year to provide benefits to MPO employees. The grant helps the MPO accomplish its mission of developing transportation plans and programs and

fostering intergovernmental cooperation and communication on transportation issues. The MPO brings together state, county and local governments and agencies to discuss and prioritize the region's transportation problems and solutions.

The Community Services Grant program was established in 1999 as a way to bring order to the process of granting County funds to organizations which provide services to the County community. While the program targets non-profit agencies, it provides a source of

matching funds for the MPO's federal funds.

The MPO thanks the Kent County Levy Court for their financial support and their recognition of the MPO's contribution to sound transportation planning.

Election Results

Kent County Commissioner Bradley Eaby of Dover is the new chairman of the Dover/Kent County MPO Council. He was elected at the Council's November annual meeting. Mayor Robert Mooney of Camden, who represents the county's 18 municipali-

ties other than Dover, was chosen vice chairman.

Scott Koenig, Director of Public Works for the City of Dover, was re-elected chairman of the MPO's 13-member Technical Advisory Committee. Also re-elected vice chairman was David L. Edgell of the Dela-

ware Office of State Planning.

The Public Advisory Committee will select a new chairman at its meeting on February 26. Horace Cook, of Dover, will be the vice-chairman during the coming year.

Picture of Brad Eaby courtesy KC Levy Court



MPO Council Member Appointed Deputy Secretary



Mrs. Olsen is seen here, far right, with Gov. Minner and staff (photo courtesy of Department of Safety and Homeland Security)

Attorney Elizabeth Y. Olsen of Dover is the new Deputy Secretary of the Delaware Department of Safety and Homeland Security.

She handled the department's legislative program successfully through the General Assembly with the passage of several public safety laws. Mrs. Olsen also provided policy and legal advice on financial and operational matters. Prior to

her state service, she worked for more than 10 years in a Dover law firm handling civil and criminal cases, with a concentration on domestic relations.

She has considerable experience in appeals procedures and oral arguments for the Delaware Supreme Court.

Mrs. Olsen was appointed, and represents, Gov. Minner on the MPO Council.

TAC Members Welcome A New Perspective

Heather L. Keegan, Delaware Economic Development Office's commercial and industrial real estate liaison to Kent and Sussex Counties, is the newest member of the Technical Advisory Committee (TAC) of the Dover/Kent County MPO.

A graduate of the University of Delaware and a resident of Sussex County, Ms. Keegan is a business development specialist serving state, county and municipal agencies, realty companies and groups, chambers of commerce and community organizations. Her aim is to market the State of Dela-

ware in Kent and Sussex Counties. She formerly was employed in land development, real estate sales and real estate market research.

Welcome Ms. Keegan to the TAC and thank you for bringing your expertise to the MPO.

Photo courtesy of DEDO



New Delaware TMA Manager

Met the new program manager of The Delaware Transportation Management Association (TMA): Suzan Doordan. She replaced retiring manager, Suzanne Reph, this fall.

Ms. Doordan has a history of local and regional experi-

ence in the transportation field, including years of service in Maryland, serving as executive director of the Cecil County (Md.) Chamber of Commerce and with the Towson (Md.) Chamber.

She is prepared to handle TMA's legislative responsibilities after eight years as a

member of the Maryland Chamber of Commerce Legislative Action Affairs Board.

"I think my work with TMA Delaware is a good fit," she said, "based on my previous experience in chamber management. My next objective is to contact all (TMA) members to discuss their needs." The Dover/Kent County MPO wishes her good luck.



Photo courtesy of TMA



Thank You Charles Gray

It is with regret that we accepted the resignation of Charles Gray from the Public Advisory Committee of the Dover/Kent County MPO.

Charlie's promotion at work and increased demands on his time forced him to resign last June. As a result, he was unable to maintain the level of commitment and dedication to the

PAC.

Charles, appointed to the PAC by the Kent County Levy Court in July 1999, served for a time as the vice-chair and participated in many activities. He will be sorely missed.

MPO PAC Member Honored

Dr. Daniel Houghtaling, current member and former Chairperson of the MPO's Public Advisory Committee, was recently recognized for his 30 years of service to Phi Theta Kappa, the international honor society of Delaware Technical & Community College. Dr. Houghtaling is director of the college's Terry

Campus Corporate and Community Programs Divisions.

Dr. Houghtaling started the Terry Campus chapter in 1987. That year there were only 300 chapters in the United States. Now Phi Theta Kappa is the largest honor society in American higher education, with more than 1200 chapters worldwide. Dr.

Houghtaling serves as the organization's middle states regional coordinator.

The society requires its members to uphold a 3.33 grade point average while participating in leadership programs and community service. (Source: Delaware State News)

(Source: Delaware State News)



Courtesy of: www.dtcc.edu

New PAC Members Appointed

Four professionals are the newest members of the Public Advisory Committee (PAC) to the Dover/Kent County MPO. All were appointed by Kent County Levy Court.

James E. Brown is a former New York judge and attorney; Peter K. Schaeffer Jr., an attorney, is a financial examiner and corporate counselor; Dr. Chandra Aleong directs the On the Job Training Institute at Delaware State University; and Diana Welch is a successful Dover merchant.

Judge Brown served as Supervising Administrative Law Judge for New York State, attorney for the New York City Police Department, New York City Legal Aid Society and New York City Commission on Human Rights. He was Staff Judge Advocate for the 8th Medical Brigade while serving at Vietnam and taught science for grades 7 to 12 in New York City schools. He resides in Dover.

Mr. Schaeffer, also of Dover, examines financial solvency and market con-

duct under contract for Delaware, New York, New Jersey, Pennsylvania, Illinois and Guam. He is corporate counsel for Avantech, Inc. For four years, he reviewed insurance policies and forms for the State of Delaware.

In addition to the On the Job Training Institute at Delaware State, Dr. Aleong is the director for the university's Summer Transportation Institute. She has been on the DSU staff since 2002 and serves on several of its administrative committees. Four of her publications were published in the last two years.

A board member of Dover Main Street, Ms. Welch also owns and successfully operates Bell, Book and Candle store on West Loockerman Street. She owns Practical Magic, LLC, which renovated two severely neglected dual-use apartment and commercial buildings. She is president of the Hamlet Homes Association in Dover. Formerly she directed felony criminal, counterintelligence and antiterrorism investigation for the Air Force in the United States and Europe.

The MPO welcomes four talented new PAC members.

DART First State Installs Better Message Boards

A new and improved electronic message board system has been installed in New Castle and Kent Counties by

DART First State, the transit division of the Delaware Department of Transportation (DelDOT.)

Schedules specific to each bus shelter are displayed in a single line or four-line message. DART First State, operated by the

Delaware Transit Corporation, also plans to add real-time arrival of scheduled buses on the message board.

Base Realignment & Closure Commission (BRAC) Changes to the WILMAPCO Region

Big changes are coming to the Aberdeen Proving Ground Army base (APG) that will result in substantial economic development throughout Cecil County and even into New Castle



County. As the 2005 Base Realignment and Closure Commission (BRAC) recommendations are carried out in Aberdeen, an estimated 8,200 on-post positions are expected at APG. Off-post, 7,500-10,000 contractor positions are anticipated.

Coming from Ft. Monmouth, NJ and northern VA over the next four to six years, most jobs are civilian positions in engineering and science, logistics, support and maintenance, and administration and business. Overall, the impact is expected to be 35,000 direct and indirect new positions and 60,000 new residents, with \$2 billion per year in salaries. As civilians, most will live off-base. A survey of those planning to move from Ft. Monmouth, where the majority of workers will come from, found that 43 percent plan to move to Maryland but aren't sure in which county yet. For those who have decided, 20 percent plan to move to Harford County, 11 percent to Delaware, 9 percent to Pennsyl-

vania, 5 percent to Cecil County and 3 percent to Baltimore County; while 8 percent will keep their primary residence in New Jersey and rent temporary housing in Maryland.

Region is Preparing for BRAC

This large influx of people to Cecil and New Castle

Counties offers opportunities for economic development; however, smart land use will require infrastructure improvements, including better transportation choices. Several initiatives are underway to plan for the changes. (Reprinted from WILMAPCO's Newsletter: Transporter)

DeIDOT Wins Laurels

The Delaware Department of Transportation, a high scorer in a nationwide independent survey, is in the forefront of investigating traffic crashes through coordinated reconstructions. Using modern scientific techniques, crash reconstructions are performed routinely by law enforcement agencies to determine the liability of drivers' fault, and possible criminal actions.



The MPO Goes to the Fair

The Dover Kent County MPO went to the Delaware State Fair this summer. Well, more accurately, vol-

unteers from the MPO's Public Advisory Committee (PAC) were the fair goers



unteers from the MPO's Public Advisory Committee (PAC) were the fair goers

by "working" at the Wyoming railroad station. Once a year, an Amtrak special carries riders to the fairgrounds at Harrington. And every year PAC members hand out "goody" bags loaded with MPO pens, magnets, crayons, materials that describe the MPO and what it does, and a guide to what to see and do at the fair. This year, MPO volunteers did their job on July 21.

The fully-booked, air conditioned, eight-car train – the only one that runs on Norfolk-Southern tracks – left Philadelphia's 30th Street station at 9 a.m., picking up passengers at Wilmington, Newark and Middletown before pulling into Wyoming at 11:55. The



train arrives at the fairgrounds at 12:40 p.m. for a day of educational, commercial, and agricultural displays, a myriad of rides and shows. The return trip begins at 5:30 p.m.

Train tickets, which range from \$50 at Philadelphia for adults and \$33 for children to \$20 for adults and \$10 for kids at Wyo-

oming, include admission to the fair. The train trip is conducted by DART First State.

MPO participation is designed to be helpful for a family event combining a relaxing and educational train ride followed by fun at the fair.

UD Planning Second Hydrogen Fuel Cell Powered Bus

In April of this year the University of Delaware unveiled a bus powered by hydrogen fuel cells, a clean energy source that doesn't require fossil fuels to operate. The only emission water is benign, with no negative environmental impact.

In May they introduced the bus into the University's transit system...using it as a shuttle bus around campus. During the summer months they have been testing it and making improvements, such as upgrading the coolant system and introducing a new methodology that improves the air stream to the fuel cell. The UD bus is only one of seven in the country that has been placed in a transit system. In Europe, there are about 30 hydrogen fuel cell buses in operation.

The University is now in the final stage of releasing the design of a second bus



Courtesy of University of Delaware

that represents a radical improvement over the first. Most notably, this second bus will have a fuel cell stack double the size of the first; going from a 20 KW cell to a 40 KW cell. Almost all of the other bus projects use fuel cell stacks that are rated 100

to 200 KW or higher. The University has been able to significantly downsize to

the 40 KW stack, which greatly reduces overall costs. Also, the battery will represent an im-

proved technology. The new battery, described as "Lithium Titanate" can be recharged in a fraction of the time it takes to recharge the battery used on the first bus.

The fuel cell project is the result of a \$1.7 million grant the University re-

ceived from the U. S. Department of Transportation's Federal Transit Administration that was matched by private financing from companies working in partnership with the University. The University's Colleges of Engineering, Chemical Engineering and Mechanical Engineering have been controlling the project, which is being coordinated by the Delaware Center for Transportation in the Department of Civil and Environmental Engineering.

The project also includes development of a safe and efficient hydrogen refueling station to be used by the bus and eventually by other hydrogen powered vehicles.

(Source: Ajay Prasad, Professor of Mechanical Engineering, University of Delaware)

Flexible Fuel Available in Delaware

Do you drive a privately-owned flexible fuel vehicle? If you do, consider filling up at the Bear Necessity BP station -- the only E85 retailer in Delaware.

E85 is a blend of 85 percent ethanol and 15 percent gasoline. It can be used by flexible fuel cars and trucks. It burns cleaner than regular gas with fewer harmful emissions which means a lower production of gas emissions

-- such as carbon dioxide -- that contribute to global warming.

Ethanol comes from corn, principally grown in the Midwest, is completely renewable, helps the nation's economy, and reduces our dependence on foreign oil.

It regularly sells for \$2.69, which makes it less expensive than unleaded regular at your favorite pump. As an experiment, the Delaware

Department of Natural Resources and Environmental Control (DNREC) held a



Source: www.publications.iowa.gov

weekend promotion at the Bear station Nov. 17 and 18 selling E85 for \$1.99 a gallon.

Bear Necessity BP is located on U.S. 40 at 1923 Pulaski Highway.

The Delaware Energy Office can provide a list of flexible fuel vehicles online at www.delaware.energy.com or www.energy.dnrec.delaware.gov. Suzanne Sebastian at the Energy Office (302) 735-3480 also can provide information.

DE8 from pg. 1

part of its 2003 Comprehensive Plan, with the addition of bike racks, bus stop shelters, and urban designs for shopping areas. Special emphasis would be given at the Delaware 8 split into Division Street and Forest

Street.

The study supports the Delaware 8 Corridor Overlay Zone which established design standards to promote "superior urban corridor development and a high quality built environment."

Copies of the study may be reviewed at the Dover City Clerk and Kent County Clerk offices, the Dover and Kent County libraries, or the MPO office in the Blue Hen Corporate Center. Comments are invited until the January 2nd MPO Council

Meeting. For more information or to request a copy of the study, call the MPO office at (302) 760-2713. Written comments may be sent to the MPO at P.O. BOX 383, Dover, DE 19903 or faxed to (302) 739-6340.

Commuter Help Increases

Something going up besides the price of gas is the number of requests for free carpool and vanpool matches, transit information, emergency rides home, and commuter development for employers – all from DART's Rideshare Delaware.

Rideshare Delaware encourages employers to participate to help their employees save money on gas, tolls, and possibly, insurance.

Tammy Ford, project

manager, said Rideshare Delaware "attempts to provide one-stop service for those seeking information on commuter benefits and services from the rider and employer perspective."

For further information, visit the web site www.ridesharedelaware.org or phone 1(888) Ride-Match



Tell Her Like It Is

You have a problem in Dover? She will get you an answer.

She is Kay Sass, the public affairs coordinator, and she provides information to city residents and handles their questions.

Mrs. Sass held the same position with the Capital School District before she moved to Dover City Hall.

Yes, you still can go directly to a city office or department if you have a question. Mrs. Sass is there

in case you can't make the appropriate connections, or if you're unhappy with the response you were given.

Her focus is on keeping the people of Dover informed, update the city's website, improving events that take place in Dover, and arranging to air programs on the public cable television channel.

You can reach her at City Hall at (302) 736-7002 or online @ kdietzssas@doover.de.us.

DART First State Kent County Paratransit Service

DART First State Paratransit Service provides door-to-door paratransit service throughout Kent County. In addition to being able to travel throughout the county, Kent residents using paratransit service can also make connects for travel into Sussex and New Castle Counties. There are 2,619 residents of Kent County who are eligible to use the service.

In 2004, DART First State began "paratransit-to-paratransit" transfers. The

system was designed to them to buses traveling



Photo taken by DelDOT Photographer James Pernol.

bring customers in from the outlying areas and transfer

within Dover. The new system resulted in efficiencies through less mileage on the vehicles and less overtime. As the surrounding area of Dover began changing, the effi-

ciency decreased. DART First State, in conjunction with the Elderly and Disabled Transit Advisory Committee (EDTAC), looked at the statistics and overall customer satisfaction. The announcement was made at the June 20, 2007 EDTAC meeting that effective July 1, 2007, the transfers within Kent County would be eliminated.

For more information contact DelDOT External Affairs at (302) 760-2080.

Jersey Big on Seat Belts

Ninety-one percent of front seat passengers wore safety belts, compared to 88 percent for drivers.

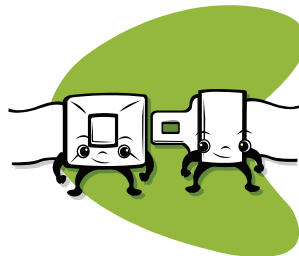
That's the result of a Seat Belt Observation Survey taken by the South Jersey Traffic Safety Alliance. The county varied with a driver high of 89

percent and a low of 86.

Seat belt usage continues to be higher for females with 92 percent of drivers and 95 percent for front seat passengers, according to the survey. The tally was 85 percent for both male drivers and front seat passengers.

Use of hand-held cell

phones is illegal in the



Garden State, yet the

survey found 6 percent of drivers using them. The highest rate went to females in one county and the lowest a mere 3 percent in another.

Hand-held cell phones also are prohibited in New York and the District of Columbia.

2008 Dover/Kent County MPO Calendar of Meetings

Technical Advisory Committee (TAC)	Public Advisory Committee (PAC)	Council Meetings
Meets on 2nd Wednesday on every even month 10am to Noon	Meets two weeks, on Tuesday, following the TAC meetings 7pm to 9pm	Meets on the 1st or 2nd Wednesday on every odd month. 3pm to 5pm
February 13, 2008 April 9, 2008 June 11, 2008 August 13, 2008 October 8, 2008 December 10, 2008	February 26, 2008 April 22, 2008 June 2008 (Workshop TBA) August 26, 2008 October 21, 2008 December 2008 (To Be Discussed)	January 2, 2008 March 5, 2008 May 7, 2008 July 2, 2008 September 3, 2008 November 5, 2008 January 7, 2009

Note: Dates and times are subject to change upon request of the TAC, PAC, or Council Members



Dover/Kent County MPO
P.O. Box 383
Dover, DE 19903-0383

Phone: 302-760-2713
Fax: 302-739-6340

Return Service Requested

PRSRT STD
US POSTAGE PAID
PERMIT #108
DOVER, DE

The MPO Council:

Bradley S. Eaby, Chairperson
(for President Brooks Banta)
Kent County Levy Court

Robert Mooney, Mayor of Camden, Vice
Chairperson
Kent County Municipalities

Stephen Kingsberry
Delaware Transit Corporation

Anthony J. DePrima (for Mayor Carey)
City of Dover

Ralph Reeb (for Secretary Wicks)
Delaware Department of Transportation

Elizabeth Olsen (for Governor Minner)
DE Dept. of Safety and Homeland Sec.

MPO Staff:

Executive Director: Juanita Wieczoreck
Planner II/GIS: Joshua Waltz
Planner II/PAC Liaison: Daniel McNulty
Executive Secretary: Catherine Samardza

Journeys Staff:

Editor: Richard L. Ornauer
Layout: Joshua Waltz

The preparation of this document was financed in part with funds provided by the Federal Government, including the Federal Transit Administration, through the Joint Funding Simplification Program, and the Federal Highway Administration of the United States Department of Transportation.