

MPO COUNCIL

Robin R. Christiansen, Mayor, City of Dover
Michael Petit de Mange, for Brooks Banta, President, Levy Court of Kent County
Terry Pepper, for John Carney, Governor of Delaware
Drew Boyce, for Jennifer Cohan, Secretary, Delaware Department of Transportation
John Sisson, Executive Director, Delaware Transit Corporation
Anthony Moyer, Mayor, City of Harrington, Representative of Kent County Municipalities

TAC

Jolyon Shelton, Delaware Department of Natural Resources and Environmental Control
David Edgell, Delaware Office of Statewide Planning Coordination
David Hugg, Director, City of Dover Department of Planning and Inspections
Nathan Attard, Delaware Department of Transportation
Milton Melendez, Delaware Department of Agriculture
Patty Cannon, Delaware Division of Small Business
Kris Connelly, Kent County Planning Department
Catherine Smith, Delaware Transit Corporation
Sharon Duca, City of Dover Public Works

MPO STAFF

Tim Riley, Kent Conservation District
Matthew Jordan, Dover Air Force Base
Aaron Chaffinch, Town of Camden
George DiBenedictis, Town of Smyrna
Rob Pierce, City of Milford

Executive Director: D. Reed Macmillan
Executive Asst: Catherine Samardza
Principal Planner: James Galvin
Outreach Manager: Helen Wiles
GIS/Mapping: Mike Ward
Administrative Assistant: Darien Sawicki

PAC

City of Dover Appointees

Jonathan Contant
Karen McGloughlin
(There is one vacant position)
Albert W. Holmes – alternate-at-large

State Appointees (DelDOT, DTC, Governor’s Office)

Dr. Phyllis Collins
Shane Breakie
Michael Gumrot
Tracey M. Miller

Kent County Appointees

Dr. Carolyn Cohee
Jayce Lesniewski
Bruce Snow
Jesse Spampinato
Chris Asay
(There is one vacant position)

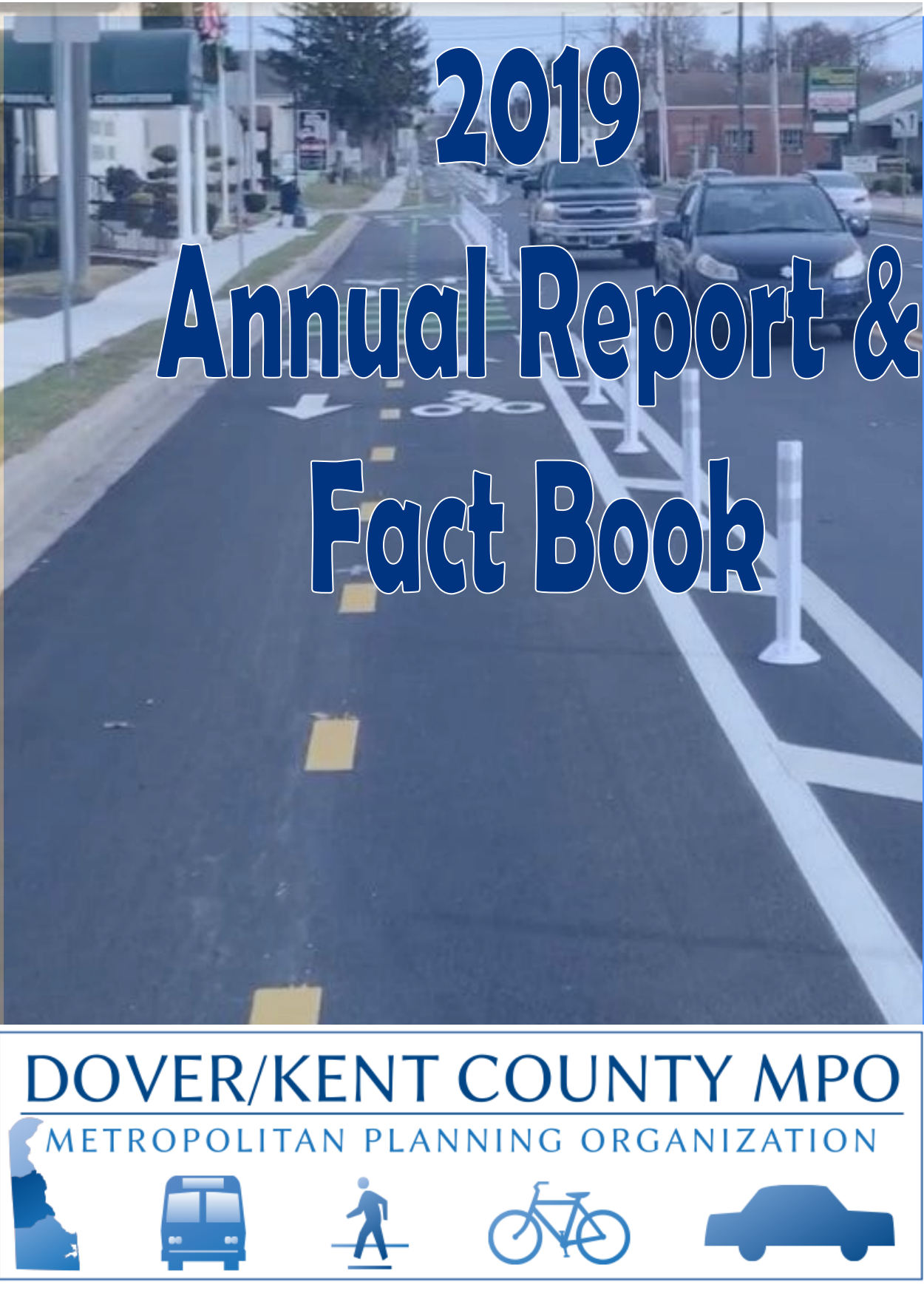
Municipal Appointee (City of Harrington)
Lawrence Smith

*The preparation of this document was financed in part
with funds provided by the Federal Government,
including the Federal Transit Administration, through
the Joint Funding Simplification Program, and the
Federal Highway Administration of the United States
Department of Transportation.*

FRONT COVER PHOTO BY: Christoper Asay

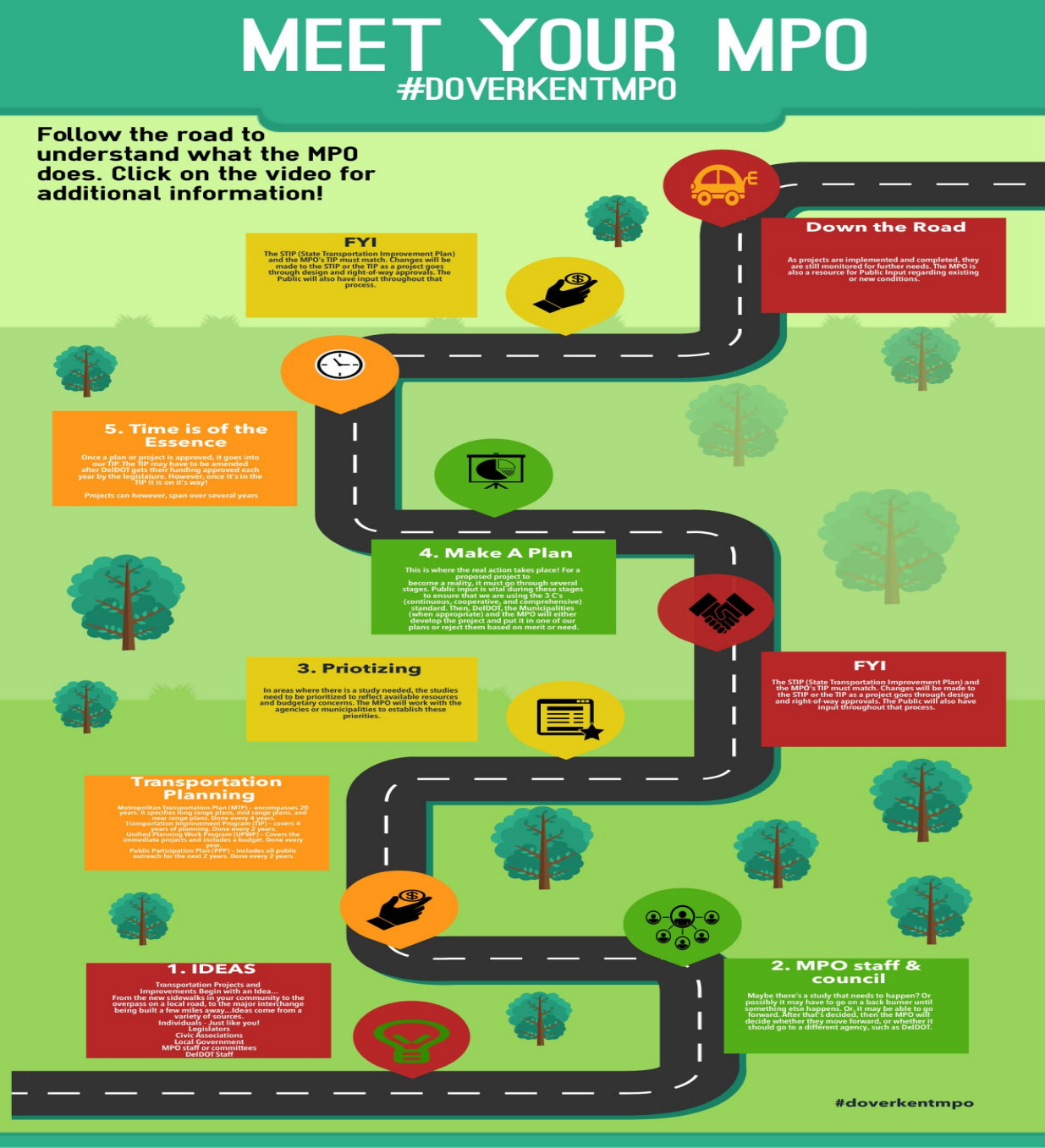
BACK COVER PHOTO BY: Helen Wiles

GO TODAY AND START MAKING A DIFFERENCE!



What is an MPO?

The Dover/Kent County MPO is the federally-designated agency responsible for coordinating transportation planning and programming in Kent County, Delaware, including all of the cities of Milford and Smyrna. Plans and programs adopted by the MPO outline how federal transportation funds will be spent and must comply with federal laws governing clean air and transportation. You can find out more about the MPO and how you can use it as a resource by visiting www.doverkentmpo.org and clicking on our video vault. There you will find several short videos that describe the MPO!



Performance Measures

The Safety Performance Management Measures regulation supports the Highway Safety Improvement Program (HSIP) and requires State Departments of Transportation (DOTs) and Metropolitan Planning Organizations (MPOs) to set HSIP targets for 5 safety performance measures. This document highlights the requirements specific to MPOs and provides a comparison of MPO and State DOT responsibilities. Below is a graphic featuring the 5 measures and the Kent County numbers for the past 5 years.

Safety Performance Measures	
# of Fatalities	120.2
Rate of Fatalities Per 100 Million vehicle miles	1.208
Number of Serious Injuries	578.6
Rate of Serious Injuries Per 100 Million vehicle miles	5.882
Combined Number of Non-Motorized Fatalities And Serious Injuries	94.2

What You Can Do to Help Achieve Performance Measures:

- 1) **Be a Smart Pedestrian—Don't walk at night in dark clothes, use a light, always cross at the light or use a crosswalk. Never walk impaired.**
- 2) **Be a courteous Cyclist—Obey traffic laws. Don't dart in between cars with a bike. Use established bike lanes.**
- 3) **Be a Wise Driver—Don't text and drive. Keep your hands on the wheel and your eyes on the road. Never drink and drive. Remain vigilant behind the wheel. Keep a lookout for pedestrians and bikes. Always obey traffic laws.**

Air Quality

The MPO works with community leaders, businesses, residents, transportation organizations, health advocacy groups and local governments. The goals are to: Educate our friends and neighbors about local transportation and air pollution issues and how they are related Encourage individual choices that can help reduce air pollution and traffic congestion On the national level, the Federal Highway Administration and the Federal Transit Administration of the U.S. Department of Transportation, and the EPA's Office of Mobile Sources have identified this issue as a priority. They are addressing it in a number of ways, from building a national coalition and partnering with local community organizations, to developing materials that support positive, voluntary actions related to transportation and air quality.



What You Can Do To Improve Air Quality

- 1) Skip Mowing the Lawn on Hot Days
- 2) Don't Fill Up Until the Sun Goes Down
- 3) Ride Your Bike or Walk Short Distances Instead of Driving a Car
- 4) Keep Your Car Well Maintained
- 5) Carpool When You Can
- 6) On Bad Quality Days, Stay Inside!

Outreach

The MPO redefined its outreach initiatives earlier this year. The new program is very technology-based, using social media, the website, video production, etc. It is also taking a grass-roots approach to community involvement by using "pop-up" outreach, on-location surveys, and public speaking to civic organizations. The MPO has embraced the idea of videos. The "video vault", or the MPO YouTube page has been viewed almost 1000 times. The MPO also had a total redesign of their website and launched a new logo this year.

WEBSITE: www.doverkentmpo.org – Our website is now very interactive, fun, and with tons of information.



MONTHLY NEWSLETTER: You can sign up to receive our monthly newsletter on our website.

INTERACTIVE MAPS: More and more maps are coming every day. Each map tells a story about your area and what is going on with infrastructure and transportation planning. You will find a button to lead you to our interactive maps on our website.

MAPITT: MAPITT is an interactive map where the user can log specific problems, even uploading pictures. Go to our website and click on MAPITT!

SOCIAL MEDIA: We are very active on virtually all of the social media channels. From LinkedIn to Facebook, from Instagram to Snapchat. Twitter, Tumblr and Reddit...we even have a Pinterest page! Just go to your favorite social media channel and search for Doverkentmpo and follow us for lots of great information!

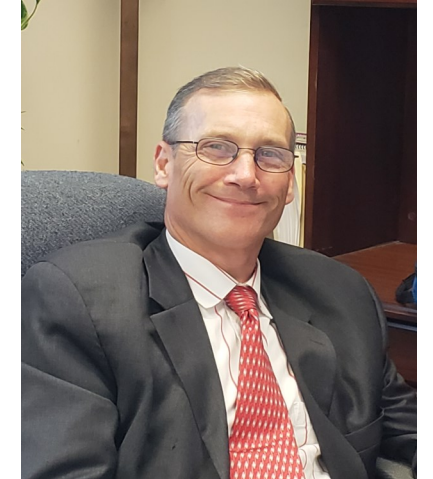
PUBLIC MEETINGS: All of our meetings are open to the public and you are invited to attend to hear what is happening, or to voice any concerns. You can find a schedule on our website.

CIVIC ORGANIZATIONS: If you are part of a civic organization and want a speaker for an upcoming meeting, give us a call at 302-387-6026 to schedule a speaker.

CATCH US OUT AND ABOUT: You may see us out and about at a community event, or just on the street. If you see us, stop and chat! We would love to hear from you.



A Letter From Our Executive Director...



2019 was another active year for the Dover/Kent County MPO. Similar to last year, we supported our MPO partners with five transportation study contracts implemented in July 2019 and which are expected to continued throughout 2020. Three of the studies are freight related; one study is a bike and pedestrian plan update; and the fifth study is a intersection study. We also continued enhancing our staff operations with increased mapping and public outreach initiatives. Our part-time GIS Planner (Mike Ward) continued developing interactive geographic information system (GIS) maps depicting several hundred transportation project locations throughout Kent County as well working with our Outreach Manager (Helen Wiles) to develop a web based transportation issue mapping site (called the Mobile Access Public Issue Transportation Tracker (MAPITT)) which allows Kent County citizens the ability to submit transportation related concerns online or through their cell phone. These staff initiatives helped our MPO compete against several other MPO's throughout the nation by winning best MPO Staff in 2019, This national recognition was awarded by the Association of Metropolitan Planning Organizations (AMPO) this past October. Lastly, 2019 was a year we prepared to initiate our Metropolitan Transportation Plan (MTP) update we are calling, "Innovation 2045." The MTP is updated every 4 to 5 years and identifies transportation road, bike, pedestrian, transit and safety projects Kent County should consider over the next 20 years. The MTP update is one of the most important things the MPO does and public involvement is essential in developing a good long range transportation plan. Projects must be in the MTP to be included in the State Plan. For more information on our MTP Update, please go to Innovation2045.com.

Yes, 2019 was another active year for us and I continue to be amazed by our MPO staff's creativity in accomplishing the myriad of transportation policy issues each day. As I mentioned in our 2018 accomplishment booklet, I am also very appreciative of our Public Advisory Committee (PAC), Technical Advisory Committee (TAC), and MPO Council. Without the support of these three reviewing and approval bodies, our MPO would be less effective in the transportation policy making field. Lastly, I look forward to working with all our partners and the public regarding transportation planning challenges facing our community throughout 2020.

Happy New Year!
Reed Macmillan
Executive Director, Dover/Kent MPO

TRANSPORTATION PLANS AND PROGRAMS

Transportation plans and programs that the Dover/Kent County MPO develops are completed through a public process. During completion of each plan and program, the public can review the MPO's work and provide feedback to the planning process. Final products/reports are adopted after careful consideration of community comment. Public participation requirements prescribed by the federal government vary by document.

The Metropolitan Transportation Plan (MTP)

Every four years, the MPO must update and adopt a long-range Metropolitan Transportation Plan (MTP). The MTP is a strategic planning tool that provides MPO members, transportation providers, the public, and other affected groups and individuals with a blueprint to blend transportation, county and municipal land use plans, and Delaware's State Strategies for Policies and Spending plan. It provides a common vision for the future supported by goals, objectives, and a system assessment. The MTP vision also is supported by identification of future transportation needs, clearly defined fundamental strategies, actions, a budget and an implementation plan. The MTP includes short-range and long-range strategies and actions, and must span at least 20 years.

Transportation Improvement Program (TIP)

The Transportation Improvement Program (TIP) is a short-range plan that contains all federally-funded transportation projects addressing identified State, municipal and County goals. The TIP is a prioritized list of projects, including road, bike/pedestrian, bus and rail transportation that the Delaware Department of Transportation expects to undertake during a four-year period. TIP projects are identified in the MTP. The TIP is required to be done every three or four years., but can be done every year. Dover/Kent MPO usually does it every year.

Unified Planning Work Program (UPWP)

The Unified Planning Work Program (UPWP), or spending plan, identifies the planning activities that the MPO plans to accomplish during the fiscal year using Federal, State and local resources. It outlines responsibilities and procedures for carrying out the cooperative transportation planning process. The UPWP is the management tool for directing MPO staff activities annually.

FY21 Budget

	A	B	C	D	E	F	G	H	I	J
1					Draft FY21 Funding (as of 31 JAN 2020)					
2										
3	8 digit percentage		0.63120662	0.16879336	0.80000000	0.13867619	0.06432381	20% Match	0.20000000	1.00000000
4					FY21 UPWP Budget					
5		% of Staff Effort	FHWA	FTA	Total Federal	DeDOT	Local Cash Contribution	Local In-kind Match- hours	Total March	UPWP Project task % of total Budget (Cell 24 I X UPWP task % in Column B)
6			0.6160722	0.1392779	0.8	0.20000000	0.00000000		0.20000000	1.00000000
7	FY 21 Project Tasks		65%	15%	80%	20%	0%		20%	
8	21-01 Program Management & Development		\$145,300.75	\$34,618.15	\$179,918.90	\$44,979.73			\$44,979.73	\$224,898.63
9	21-02 Prepare the UPWP		\$8,302.90	\$1,978.18	\$10,281.08	\$2,570.27			\$2,570.27	\$12,851.35
10	21-03 Public Outreach		\$49,817.40	\$11,869.08	\$61,686.48	\$15,421.62			\$15,421.62	\$77,108.10
11	21-04 Prepare the TIP		\$8,302.90	\$1,978.18	\$10,281.08	\$2,570.27			\$2,570.27	\$12,851.35
12	21-05 Data Management		\$24,908.70	\$5,934.54	\$30,843.24	\$7,710.81			\$7,710.81	\$38,554.05
13	21-06 Training, Education and Outreach		\$16,605.80	\$3,956.36	\$20,562.16	\$5,140.54			\$5,140.54	\$25,702.70
14	21-07 Update MTP		\$53,120.30	\$13,347.26	\$71,967.56	\$17,991.89			\$17,991.89	\$89,959.45
15	21-08 Transportation Planning Projects		\$8,302.90	\$1,978.18	\$10,281.08	\$2,570.27			\$2,570.27	\$12,851.35
16	Sub-category 21-08.05 (Other Planning Studies)		\$95,483.35	\$22,719.07	\$118,202.42	\$29,558.11			\$29,558.11	\$147,790.53
17	Total FY20 Apportionment	100.0%	\$415,145.00	\$98,909.00	\$514,054.00	\$128,513.50			\$128,513.50	\$642,567.50
18										
19										
20										
21										
22										
23										
24										
25										
26										
27										
28										
29	FY19 Roll Over Funding (added into 21-08.05 Other Planning Studies)		\$13,020.23	\$3,034.14	\$16,054.37	\$80.00	\$3,933.59		\$0.00	\$0.00
30	Final FY21 UPWP		\$428,165.23	\$101,943.14	\$530,108.37	\$128,593.50	\$3,933.59		\$0.00	\$0.00



1 Social Media

DoverKentMPO is our name on virtually every social media platform! Go and share with us your thoughts, ideas and reactions!



2 Online Surveys

Go to our website and click on Surveys to find the latest and greatest in what we want to know!



3 Help us with our long-range vision



Go to INNOVATION2045.COM and see all the ways you can participate in assisting us with our Metropolitan Transportation Plan!

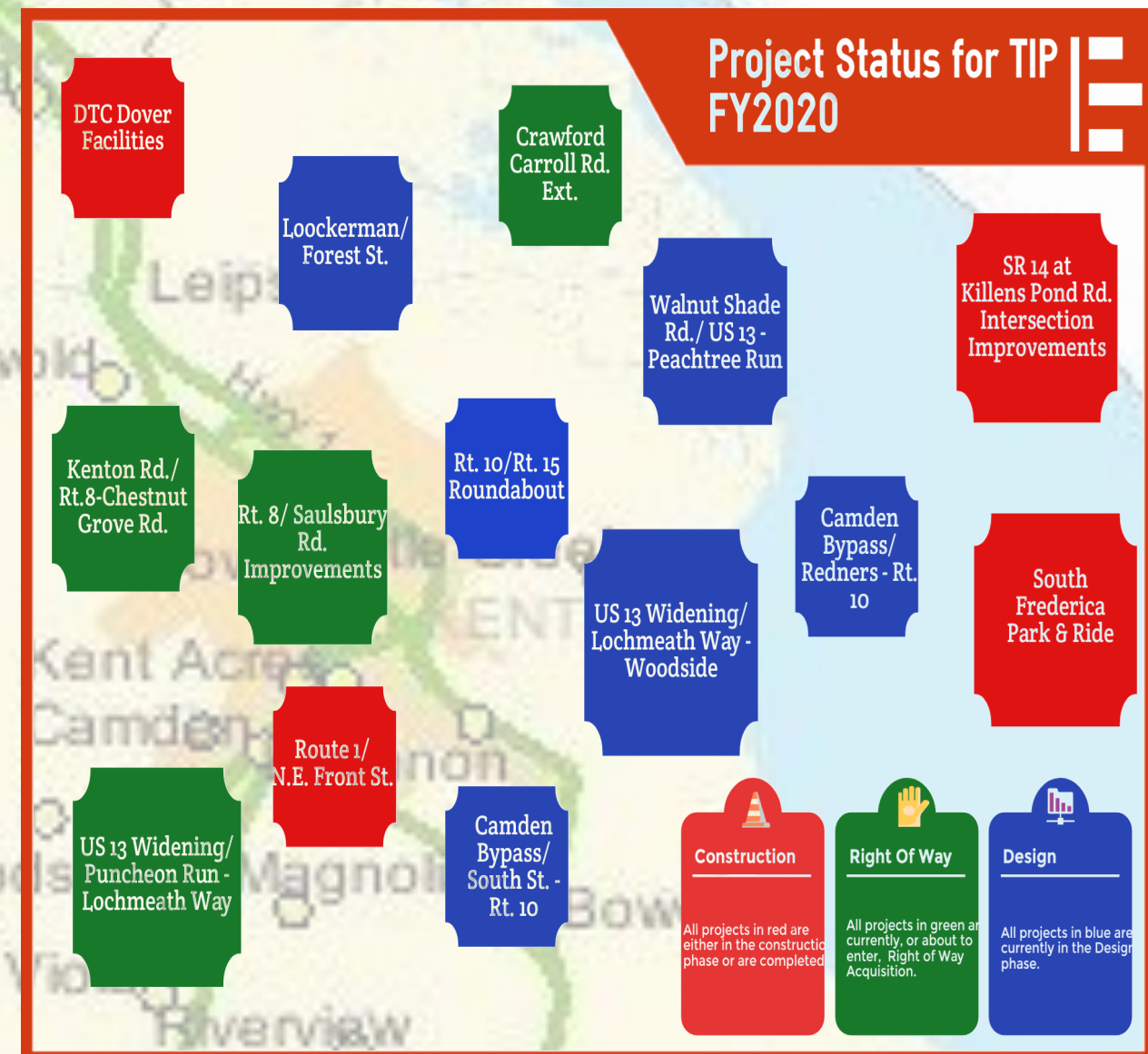
4 Book Us!



We would love to come to your meeting or club to talk about what we do and to hear your thoughts! Call Helen at 302-387-6026 to book us!

5 Show Up!

Come see us at the many pop-up outreach opportunities throughout the year!



2019 Studies by the MPO

In 2019-2020 there will be three freight studies; one road intersection study; and one bike/pedestrian plan update study.

The first freight study is the **“Dover Area Freight Management Study and Air Cargo Ramp Study”**. This study was requested by DelDOT and involves scenario planning focused on significant development in the vicinity of the Central Delaware Aviation Complex (formerly the Civil Air Terminal). Important to this study will be an understanding of freight movement around the City of Dover to the area presently being master planned between the Dover Air Force Base and South Little Creek Rd, as cited in the Kent County Levy Court Comprehensive Plan (2018). In addition to developing scenarios for transportation infrastructure development to support intermodal freight travel, DelDOT also seeks that this study provide an assessment of origins and destinations of freight being moved in and out of the Central Delaware Aviation Complex if it were to be fully built out in order to support statewide freight planning efforts. It is understood that the study has the support of Kent County and the Kent Economic Partnership.

The **“Intermodal Freight Terminal Feasibility Study”** is the second freight study requested by the City of Harrington leveraging information from the Kent Economic Partnership’s Economic Analysis completed in September 2018. The analysis, among other things, recommended Warehousing, Distribution, and Logistics as a key sector to target in the future regarding Kent County’s economic development initiatives. As such, this proposed Intermodal Freight Terminal Feasibility Study supports the goals outlined in that report. Therefore, the purpose of this study is to explore the feasibility of establishing an intermodal freight terminal facility in the City of Harrington, servicing rail and truck freight logistical operations throughout Kent County, the state of Delaware, and the region.



The third freight study will be the **“East West Truck Freight Study”** which was requested by Kent County Levy Court and Kent Economic Partnership. The primary focus of this study will be analysis to analyze existing east-west truck freight traffic patterns and identify traffic impacts traveling on local roadways as well as provide recommendations on establishing a preferred set of improvements for east-west truck freight routes, and any future infrastructure improvements which may be required as Kent County continues to grow.



The fourth study is the **“Transportation Intersection and Traffic Count Study”** requested by the Town of Magnolia. The study will focus on the Main Street/Walnut Street Intersection in order to develop strategies for generating accurate and timely data regarding the increasing motor vehicle traffic, particularly the number of vehicles passing through the Main Street traffic light intersection. The data collected will be used to develop a strategy to mitigate the impact of pass-through vehicles which may result in a proposed transportation improvement project.

And finally, the fifth study is the **“2020 City of Dover Bicycle and Pedestrian Plan Update”**. The City of Dover requested their separate 2015 Bike and Pedestrian plans be updated and consolidated as one plan. The focus of the study will be reviewing goals, existing conditions, policies, plans, programs, DelDOT projects, bicycle facility design and connectivity, pedestrian needs, and recommendations in both 2015 studies in order to update these aspects. Additionally, the update will include strategies to link the State of Delaware’s 2018 Blueprint for a Bicycle Friendly Delaware and the 2017 MPO Regional Bike Plan into the 2020 City of Dover Bicycle and Pedestrian Plan Update.

