



Dover Bicycle and Pedestrian Plan

Public Advisory Committee | April 8, 2021



Whitman, Requardt & Associates, LLP
Engineers · Architects · Environmental Planners Est. 1915

PLAN TEAM

- Dover/Kent County Metropolitan Planning Organization
 - Plan funding and administration
- City of Dover
 - Plan client
- DelDOT
 - Technical resources and reviews
- Whitman, Requardt & Associates, LLP
 - Consultant transportation planners and engineers
 - Perform study and prepare plan

PLAN PURPOSE

- Integrate recommendations from the *Dover Bicycle Plan* (2015), *Dover Pedestrian Plan* (2015), and *Regional Bike Plan* (2017)
- Apply guidance from the *Blueprint for A Bicycle Friendly Delaware: A Statewide Policy Plan* (2018)
- Incorporate recommendations from the City of Dover Comprehensive Plan (2020)
- Use Level of Traffic Stress analysis and a gap analysis to identify pedestrian and bicycle projects that will reduce stress and improve safety for pedestrians and bicyclists across the City

Who participated in the process?

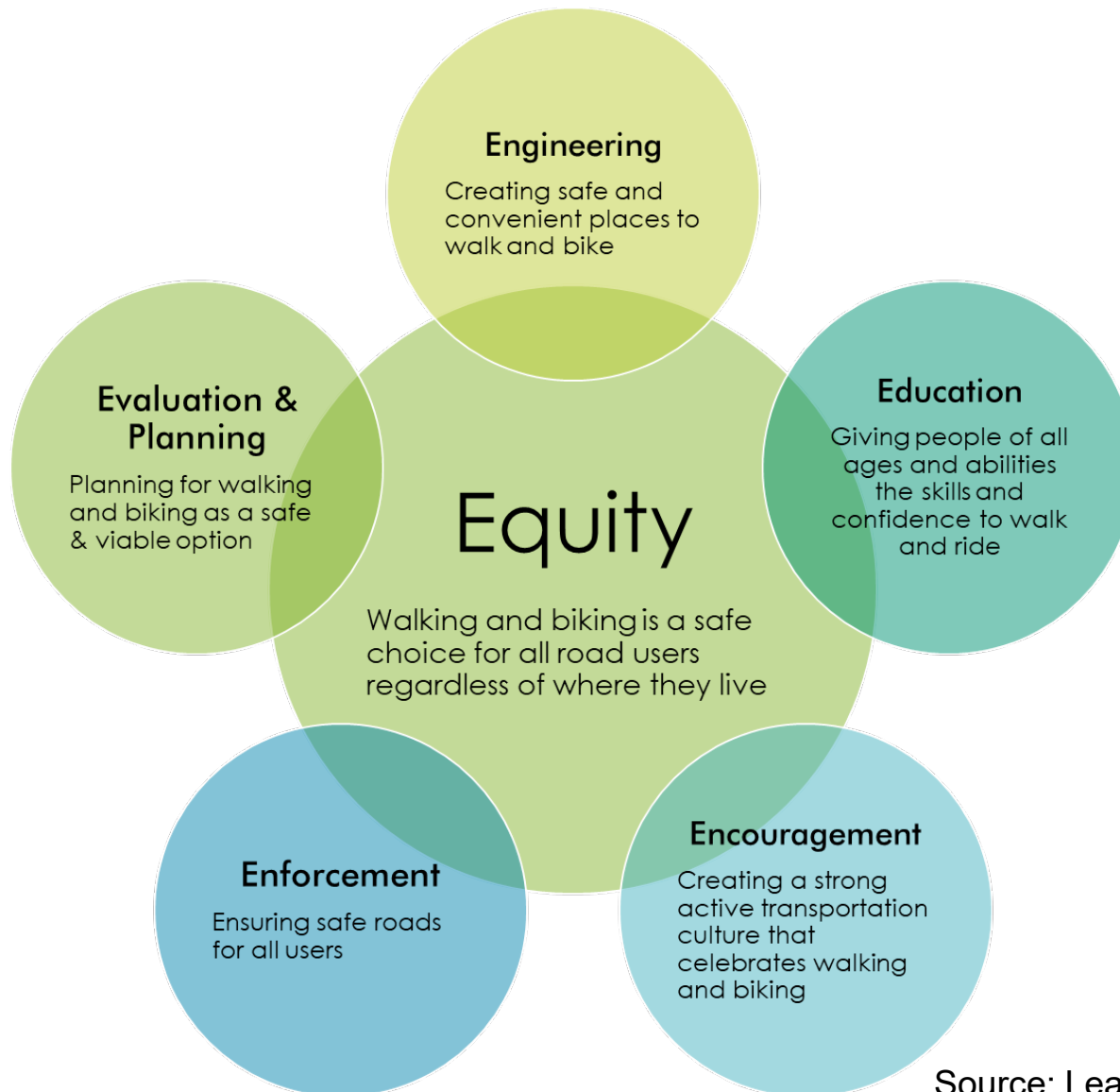
PUBLIC INVOLVEMENT

- Public Workshop at Dover Library on October 21, 2019
 - Staff from City, MPO, and DelDOT available
- Draft plan and online survey available September 1-30, 2020
 - Survey distributed via City website and social media
 - 9 people submitted feedback



How were project recommendations developed?

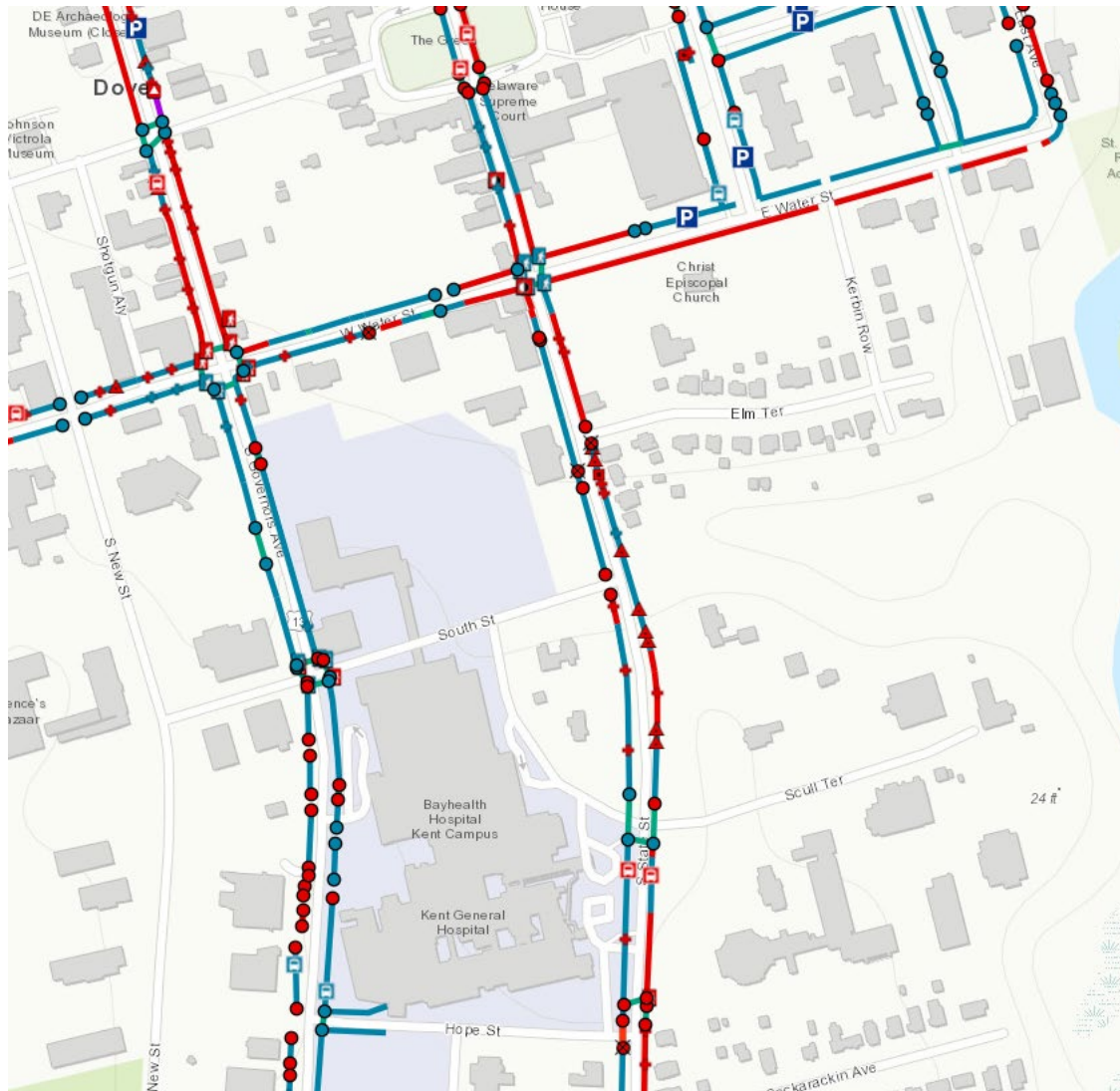
SIX “Es” OF ACTIVE TRANSPORTATION PLANNING



Source: League of American Cyclists

How were project recommendations developed?

PEDESTRIAN GAP ANALYSIS



Legend

DE_ADA_Inventory_Public -
Bus Stop Patron Pad

- Non-Compliant
- Compliant

DE_ADA_Inventory_Public -
Single Curb Ramp

- Non-Compliant
- Compliant

DE_ADA_Inventory_Public -
Multiple Curb Ramps

- Non-Compliant
- Compliant

DE_ADA_Inventory_Public -
Curb Barrier



DE_ADA_Inventory_Public -
Stub End



DE_ADA_Inventory_Public -
Driveway Crossing

- Non-Compliant
- Compliant

DE_ADA_Inventory_Public -
Driveway Crossing Non-
Compliant Sidewalk



DE_ADA_Inventory_Public -
On Street Parking



DE_ADA_Inventory_Public -
Horizontal Gap



DE_ADA_Inventory_Public -
Vertical Elevation Difference



DE_ADA_Inventory_Public -
Pinch Point



DE_ADA_Inventory_Public -
Non-Compliant



DE_ADA_Inventory_Public -
Pedestrian Signal

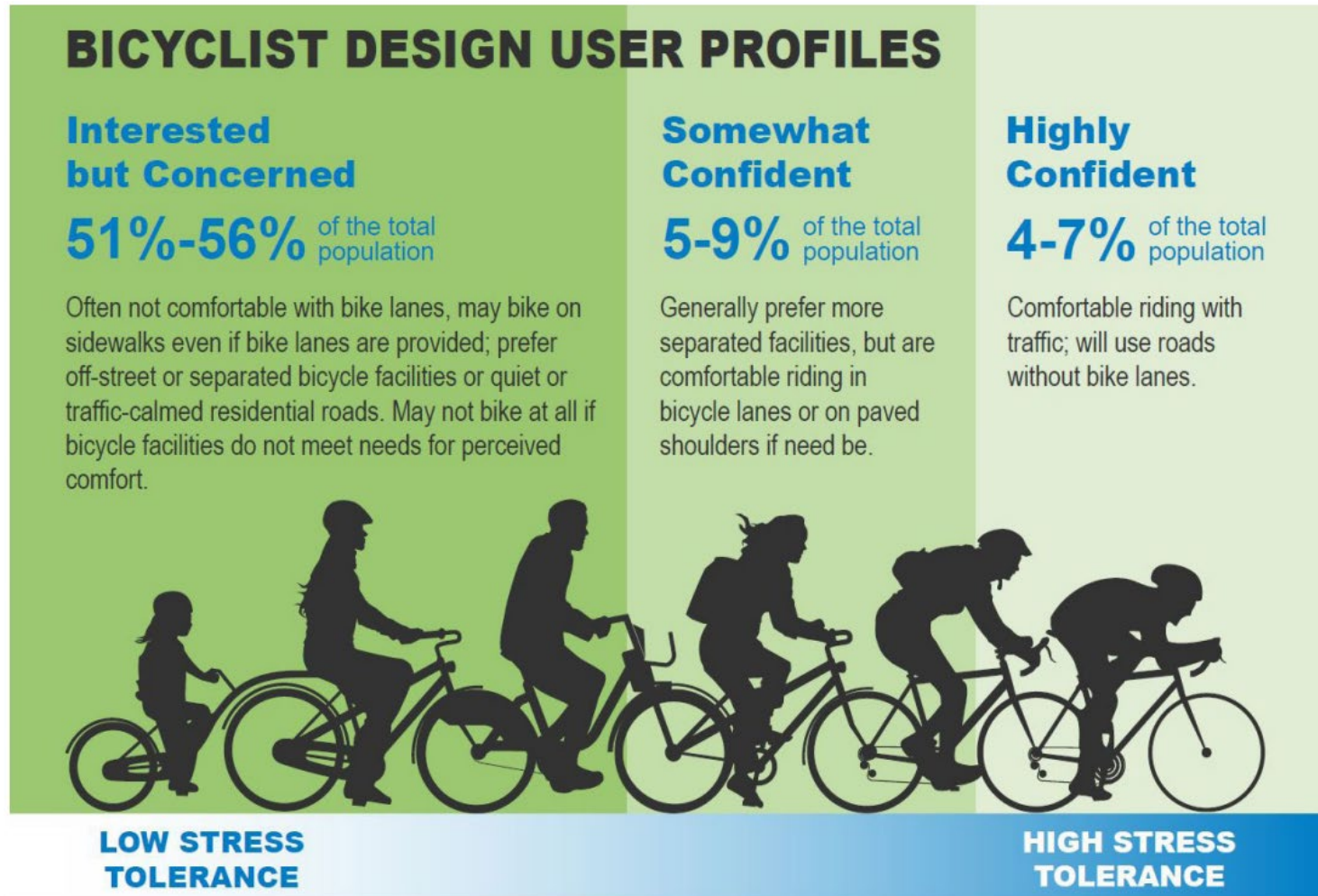


DE_ADA_Inventory_Public -
Railroad Crossing



How were project recommendations developed?

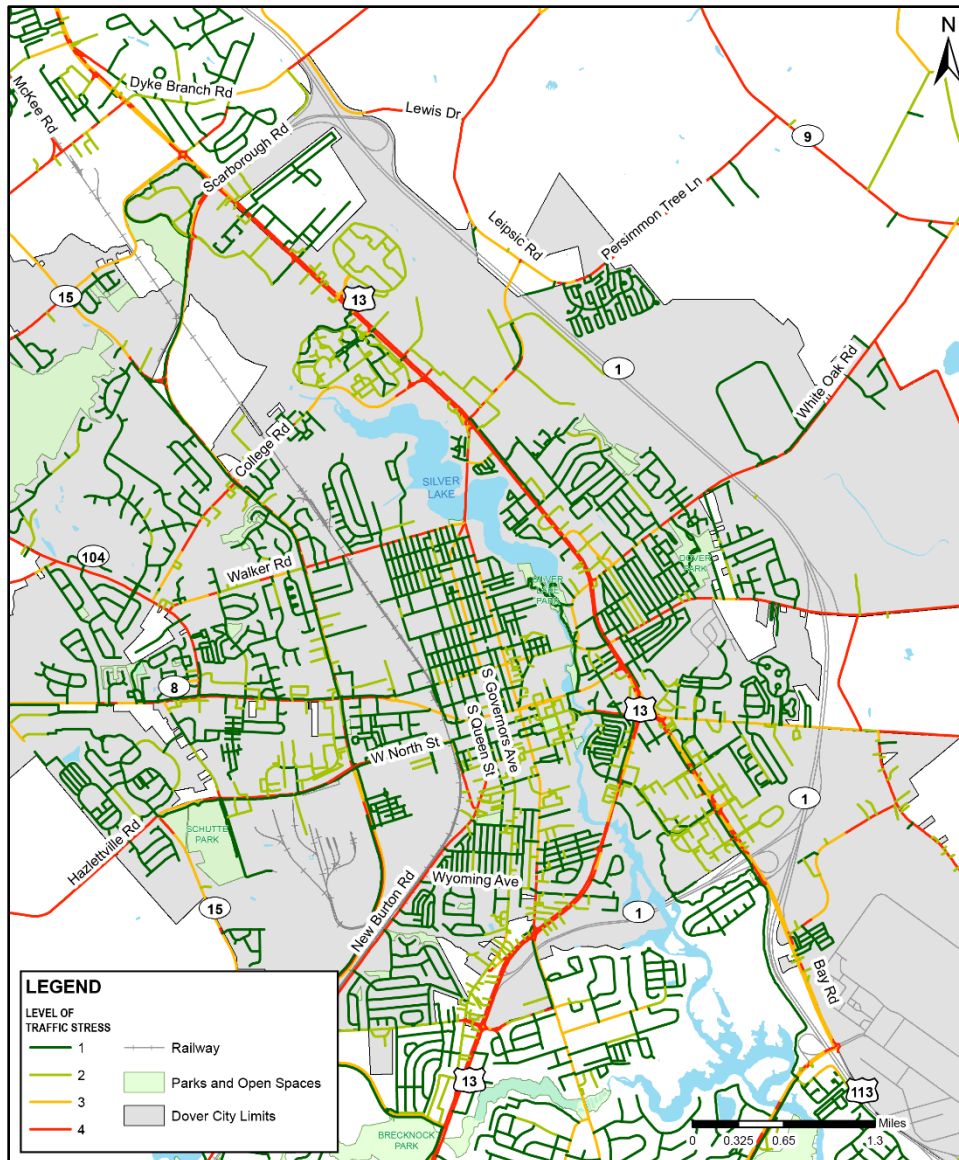
BICYCLE LEVEL OF TRAFFIC STRESS (LTS)



Source: FHWA Bikeway Selection Guide

How were project recommendations developed?

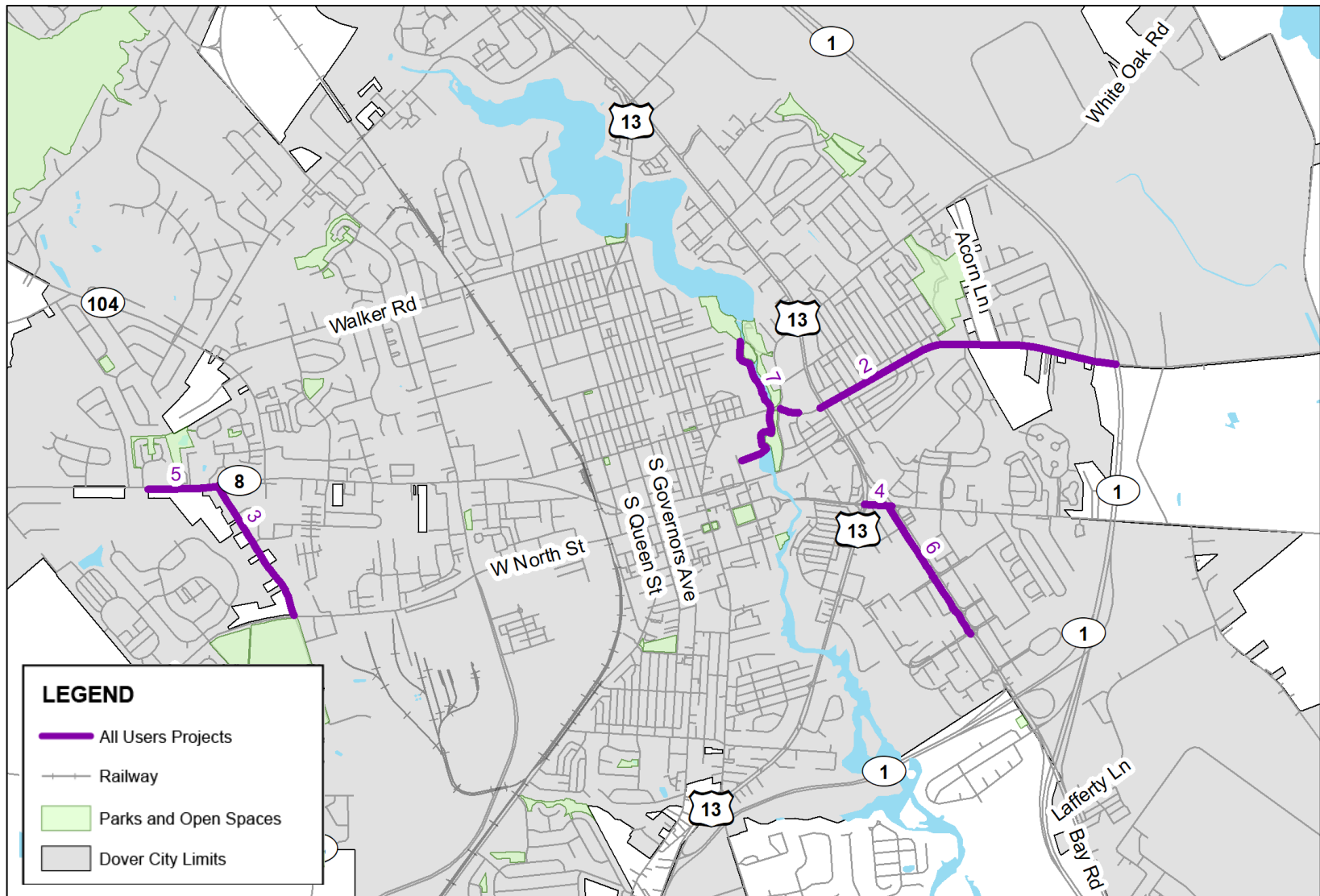
LEVEL OF TRAFFIC STRESS (LTS)



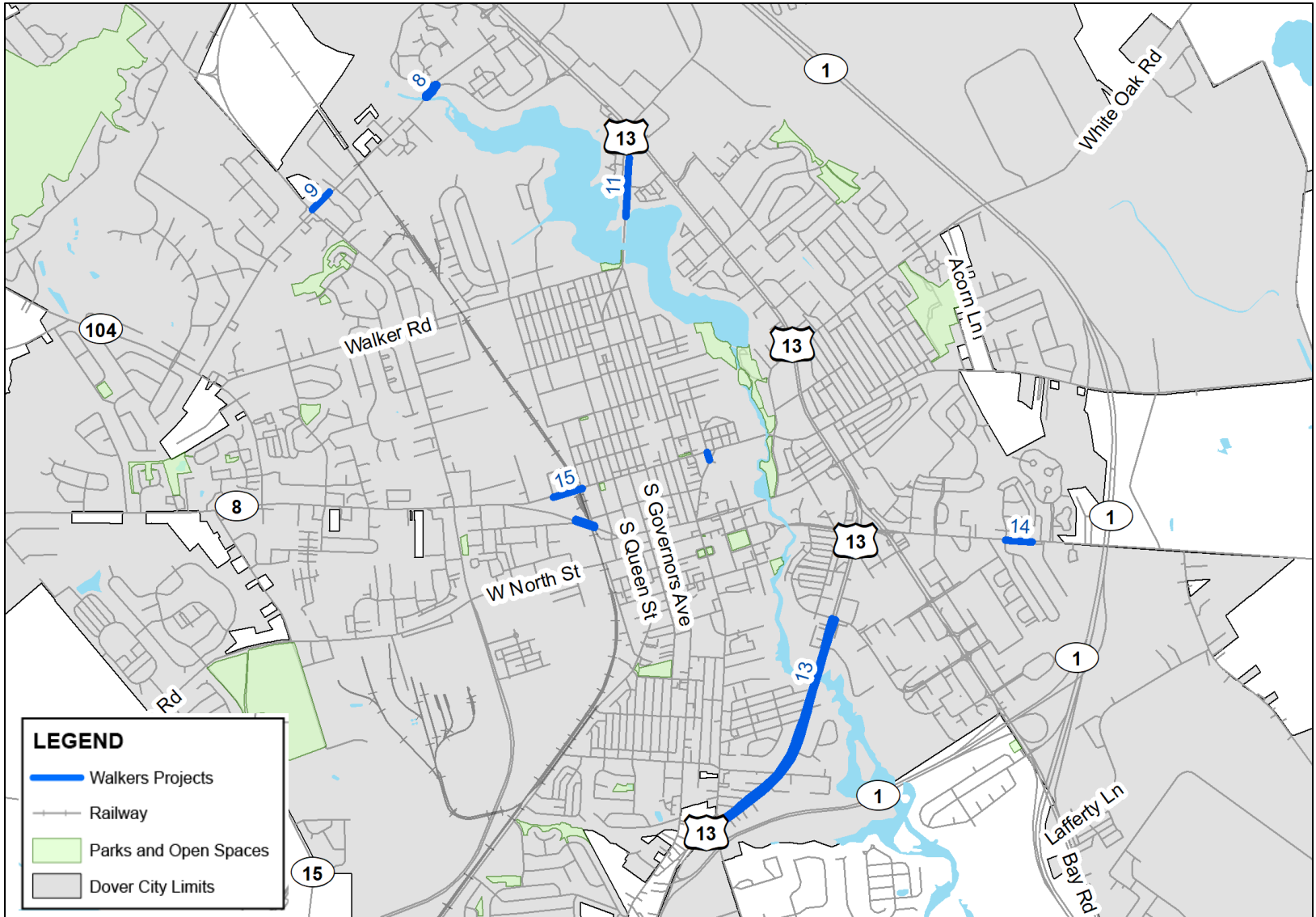
Level of Traffic Stress	Description	Example
1	Safe for children to use; Usually completely separated from auto traffic	
2	Tolerated by most mainstream adult populations of cyclists; Roads with low volume and low speed auto traffic	
3	Tolerated by riders who are enthused and confident; Heavy traffic with separated bike facility	
4	Only tolerated by strong and fearless riders; cyclists must interact with high volumes or speeds of auto traffic.	

Source: DeIDOT

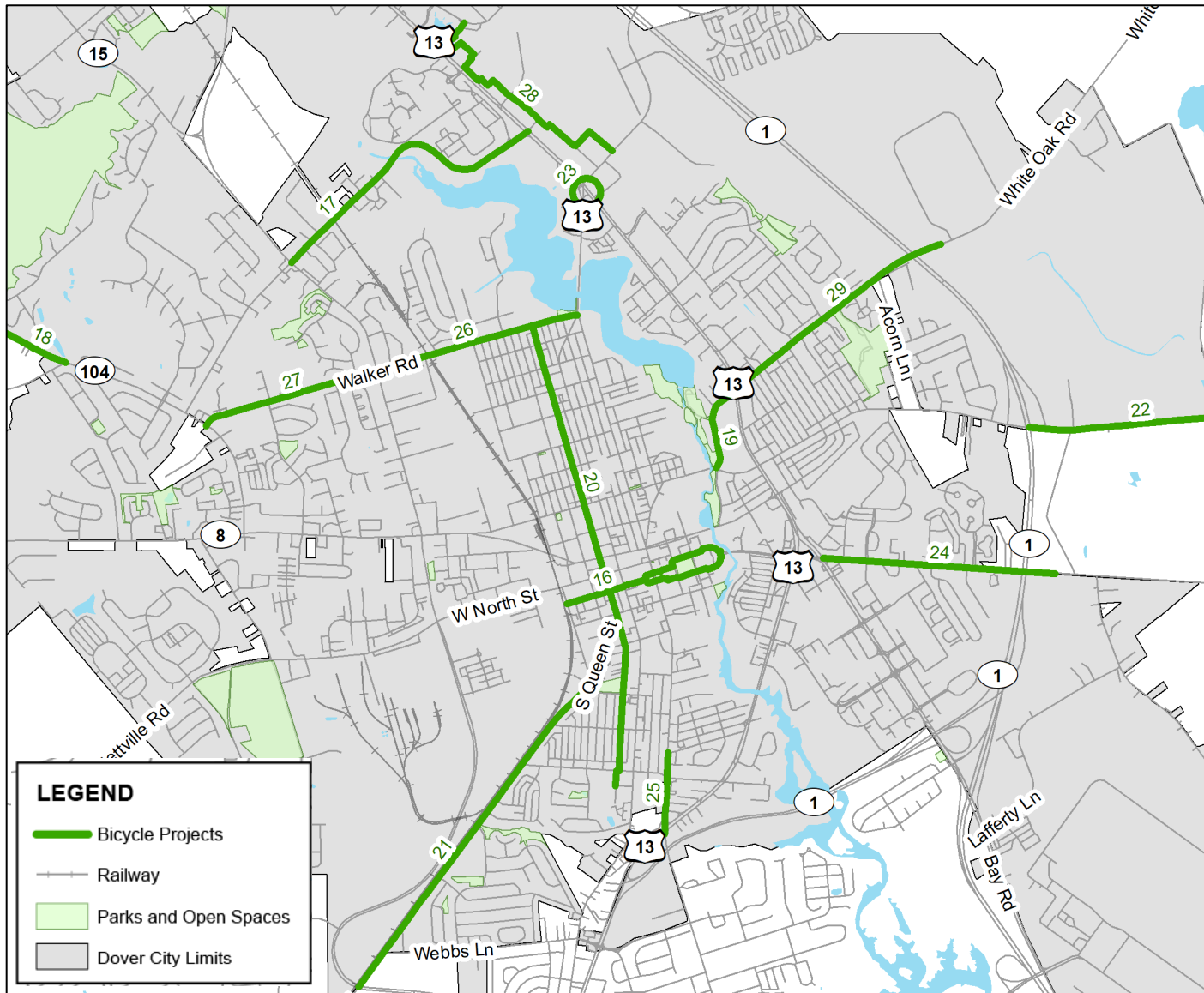
ALL USERS PROJECTS (BOTH WALKING AND BICYCLING)



WALKING PROJECTS



BICYCLING PROJECTS



DOVER BICYCLE AND PEDESTRIAN PLAN

2020

City of Dover

Dover/Kent County
Metropolitan Planning Organization

Delaware Department of Transportation



Thank you!

Whitman, Requardt & Associates, LLP

Leah Kacanda, Project Manager