

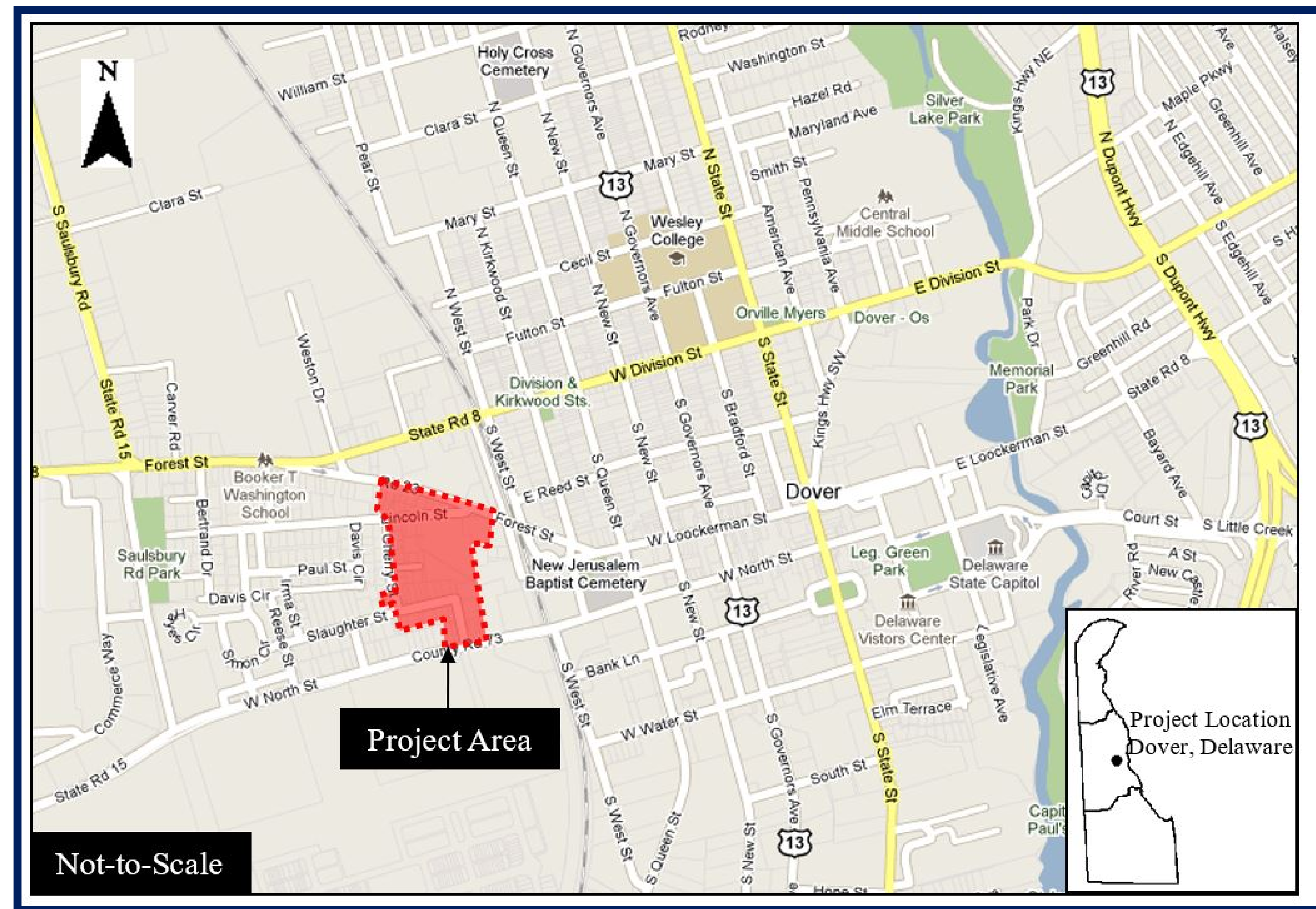
Banning/Clarence Street Study

MPO Council

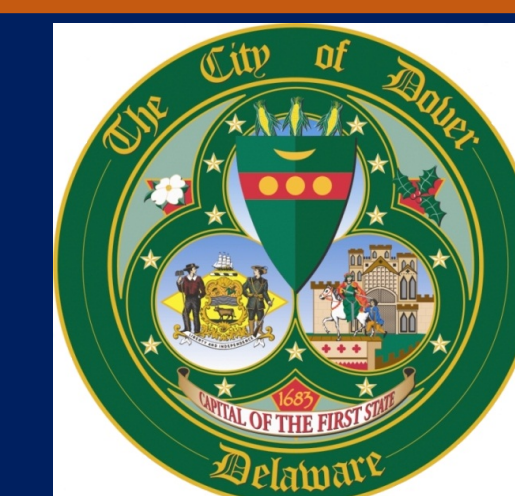
November 3, 2021

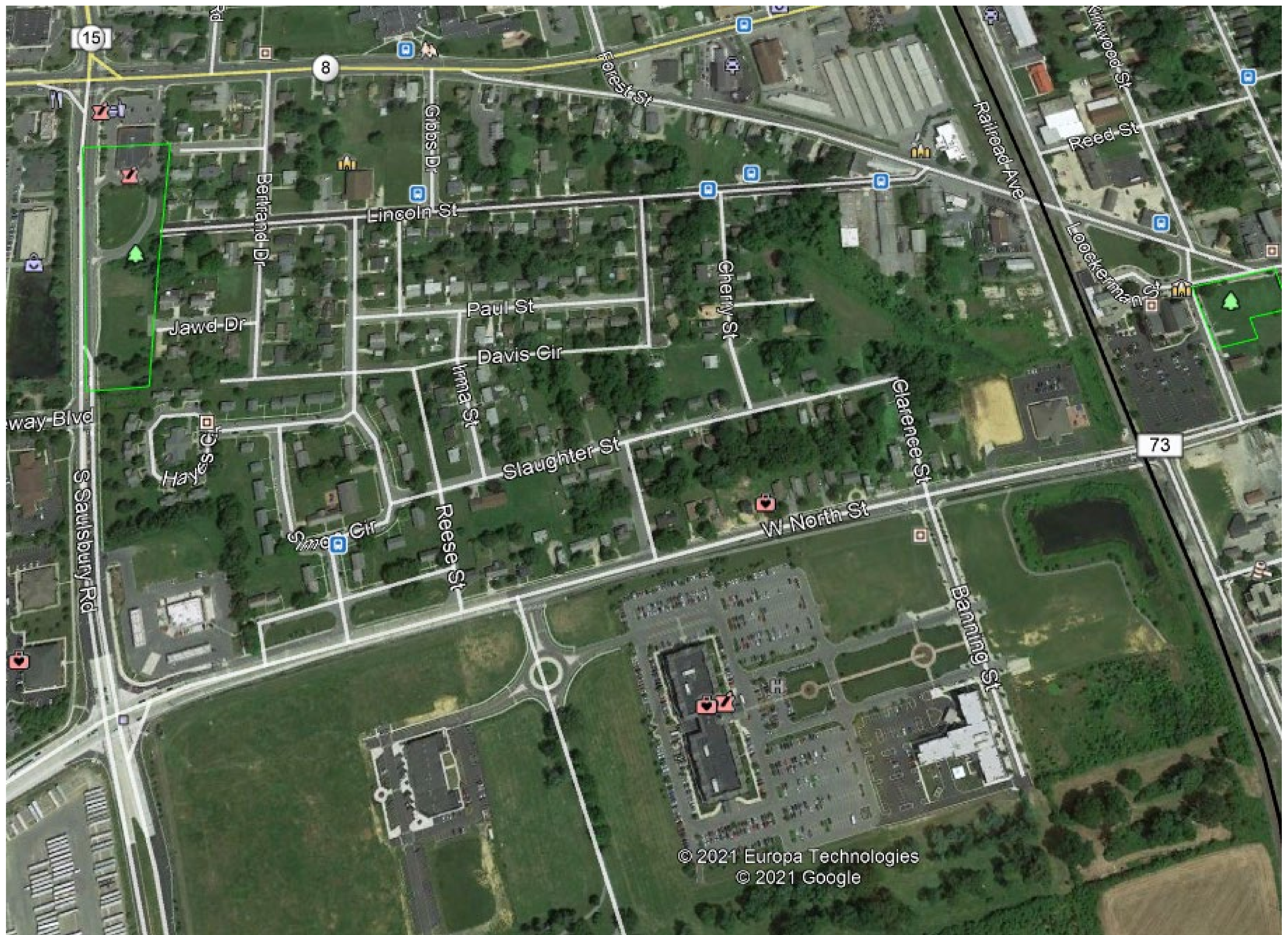


- Study Area
- Project Purpose
- Recent Flood Studies
- Revised Alternatives
- Alternatives Cost Estimates
- Recommendations
- Next Steps

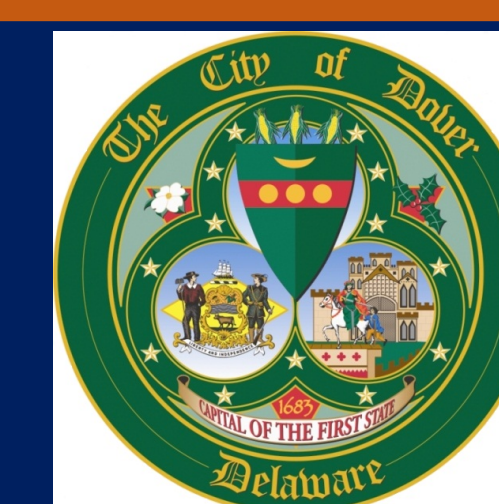


Agenda





Study Area





Direct Connection Between
Eden Hill Development and
Forest Street



Connect to Future
Extension of S. Greenberry
Lane



Parallels Saulsbury Road



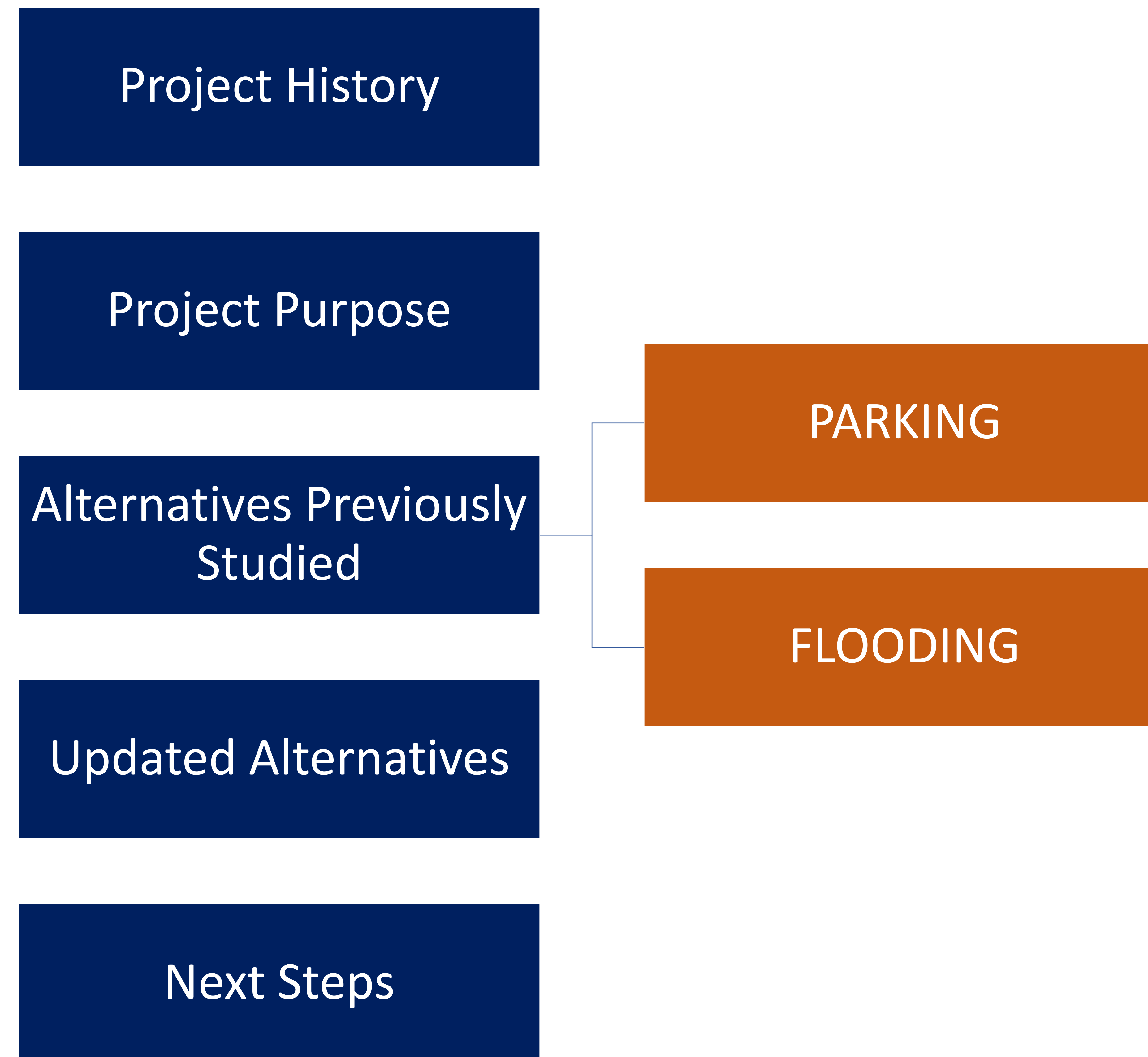
600 Proposed
Housing Units
Connected to
Forest Street
Without Using
North Street or
POW-MIA Parkway



Project Purpose



- April 28, 2021
- 12 Attendees



- July 14, 2021
- 18 Attendees

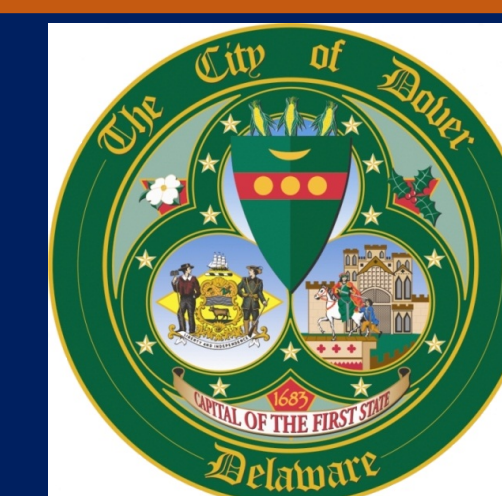
Study Area

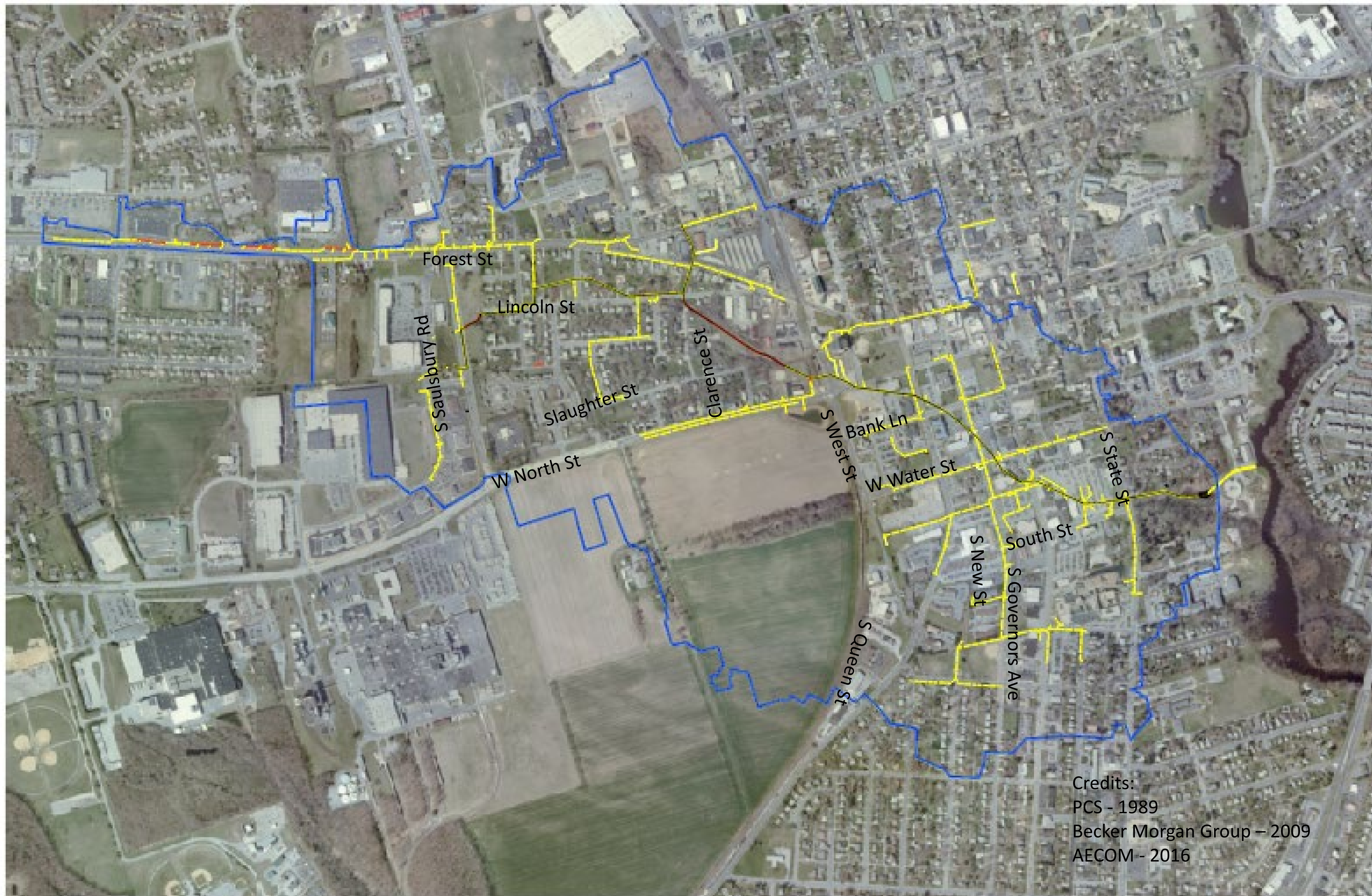
Project Purpose

Revised Alternatives
Including Parking

Recent Flood Studies

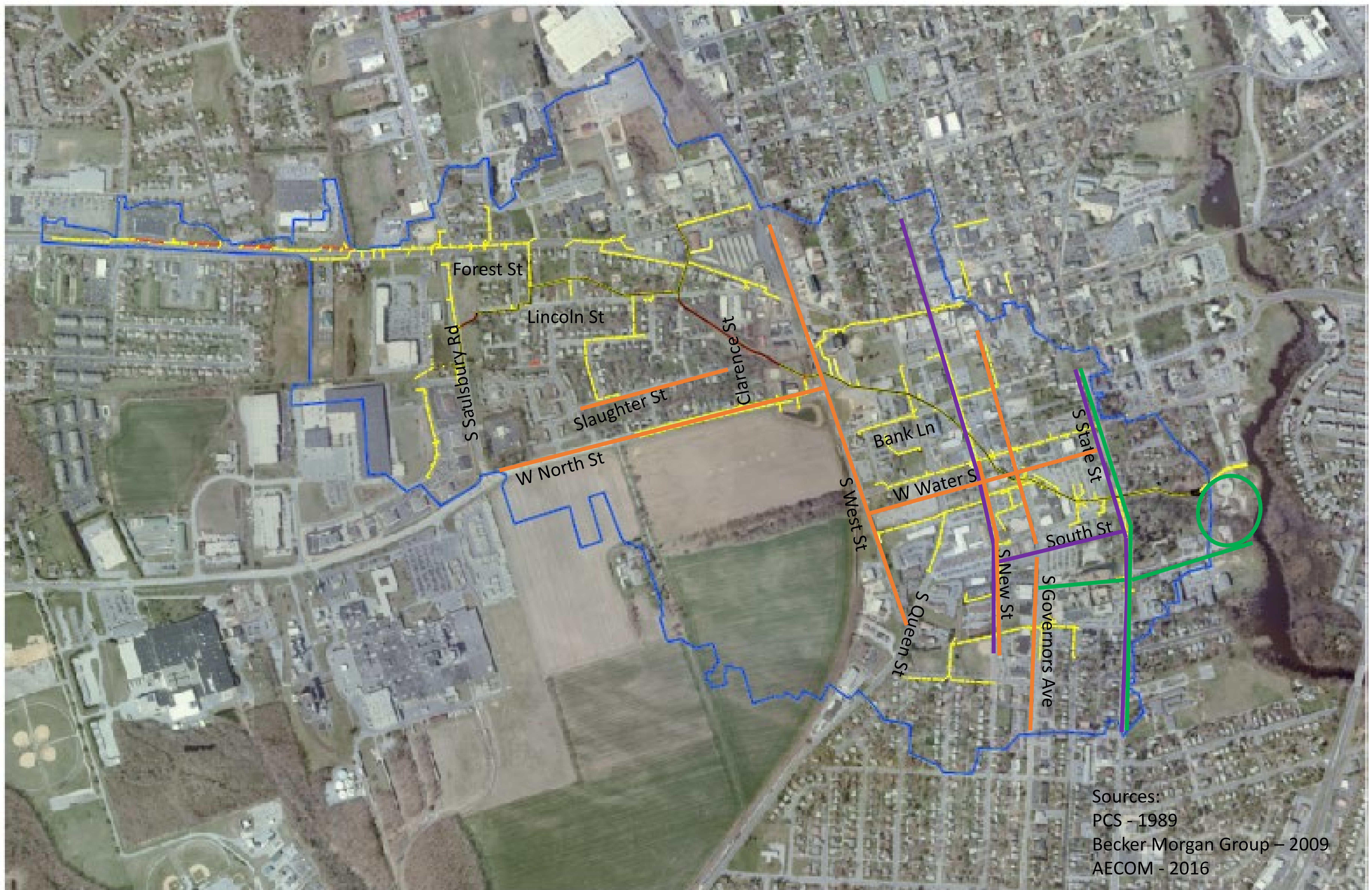
Next Steps





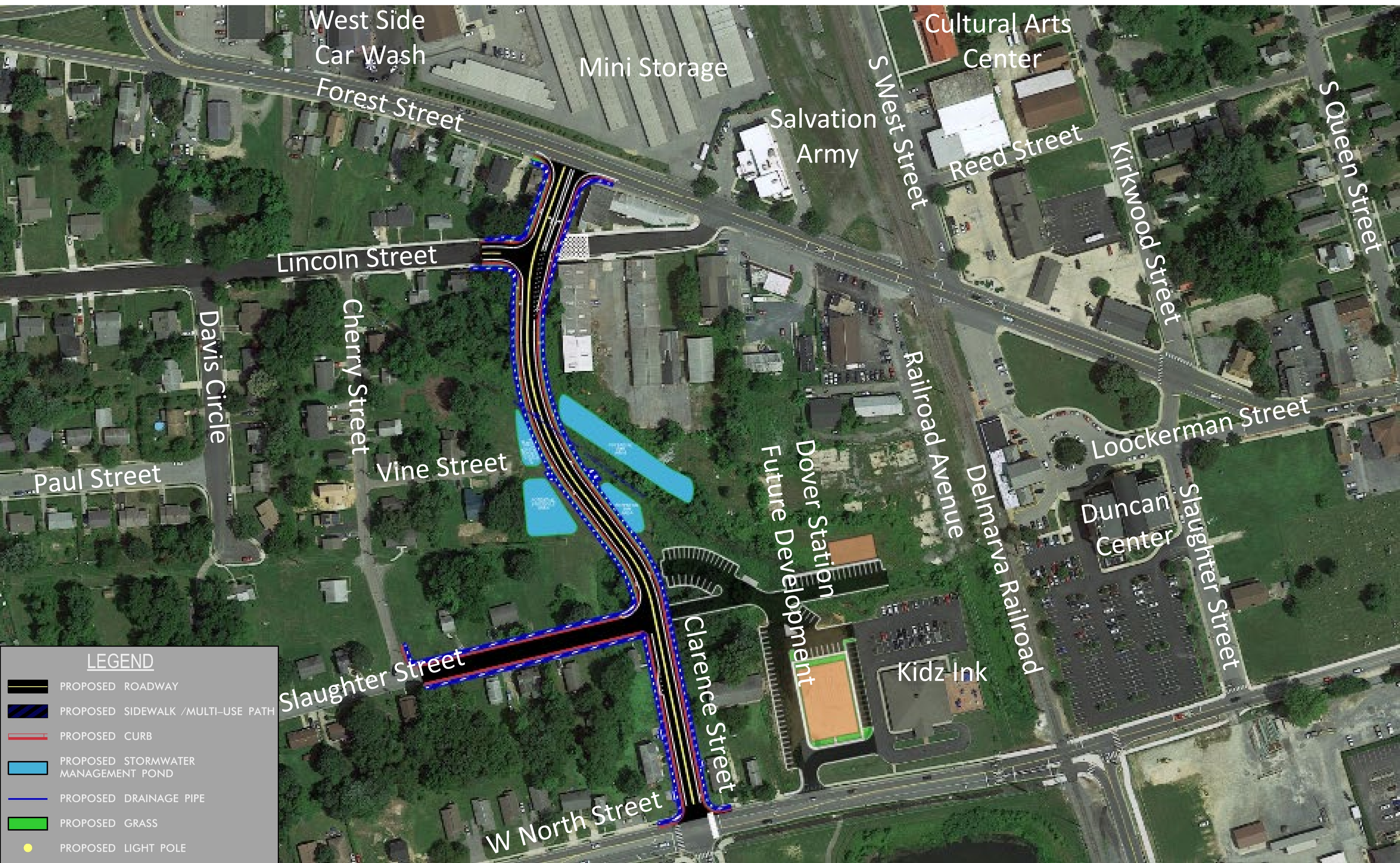
Tar Ditch Drainage Area





Recent Flood Studies





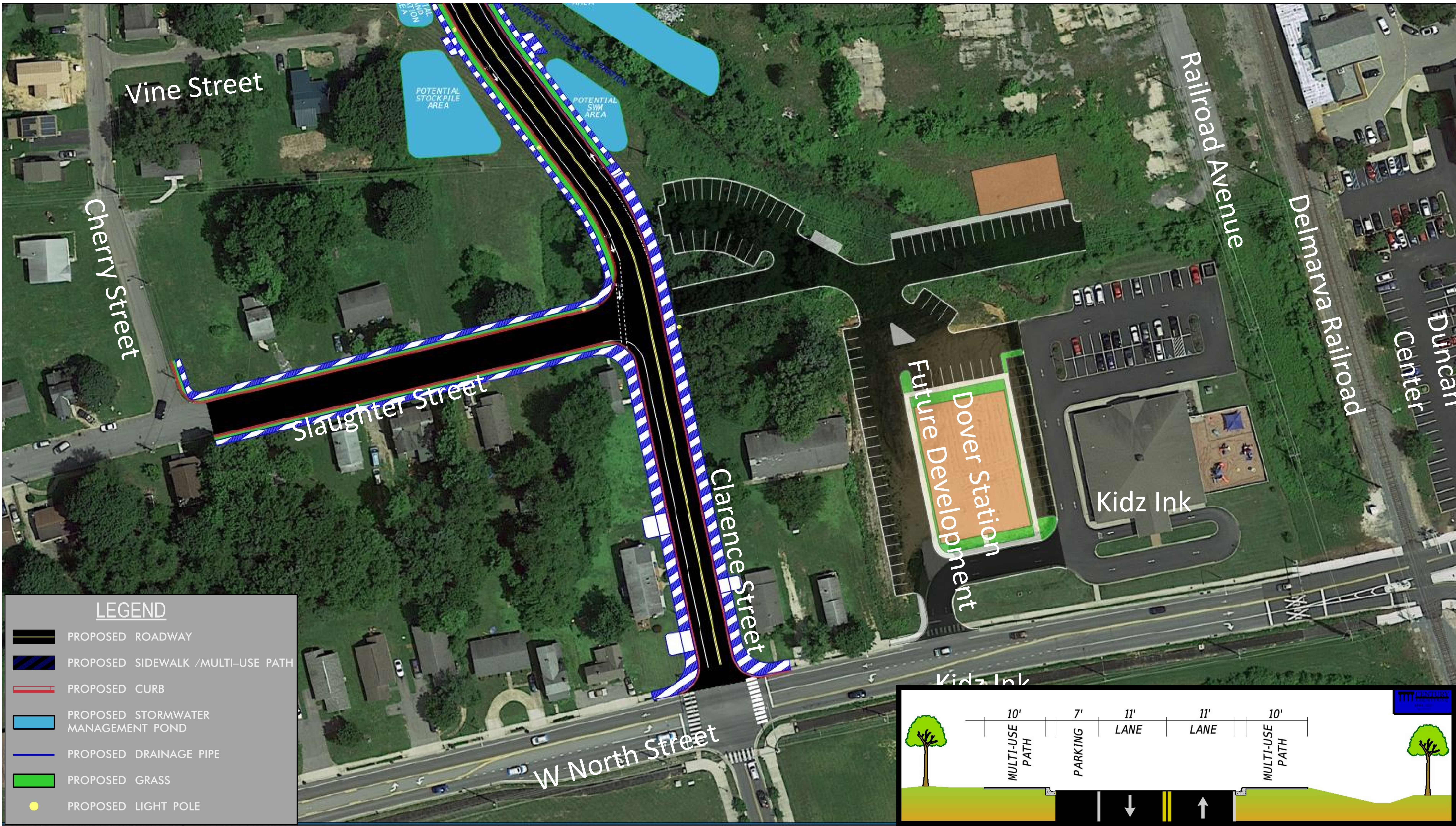
Alternative A



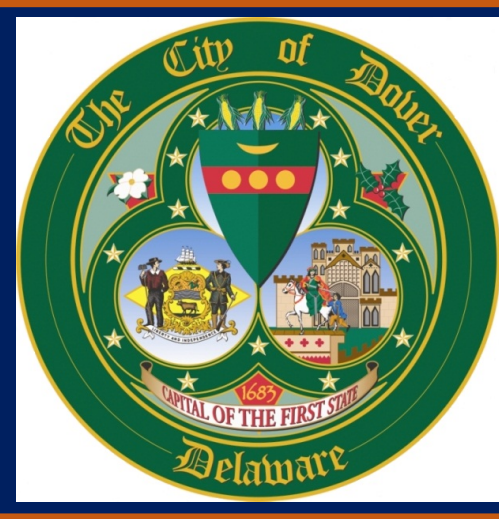


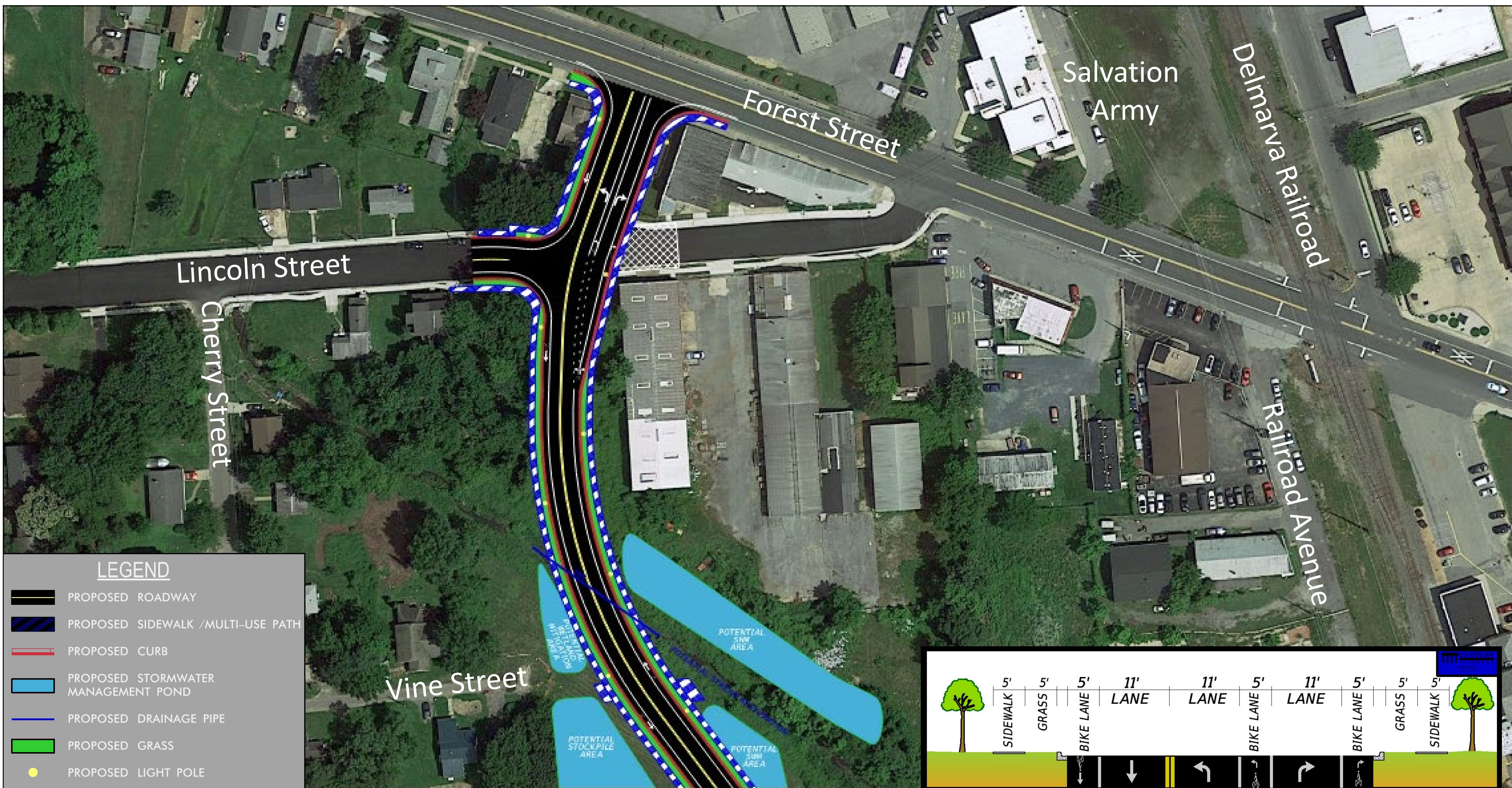
Alt A Off-Street Parking





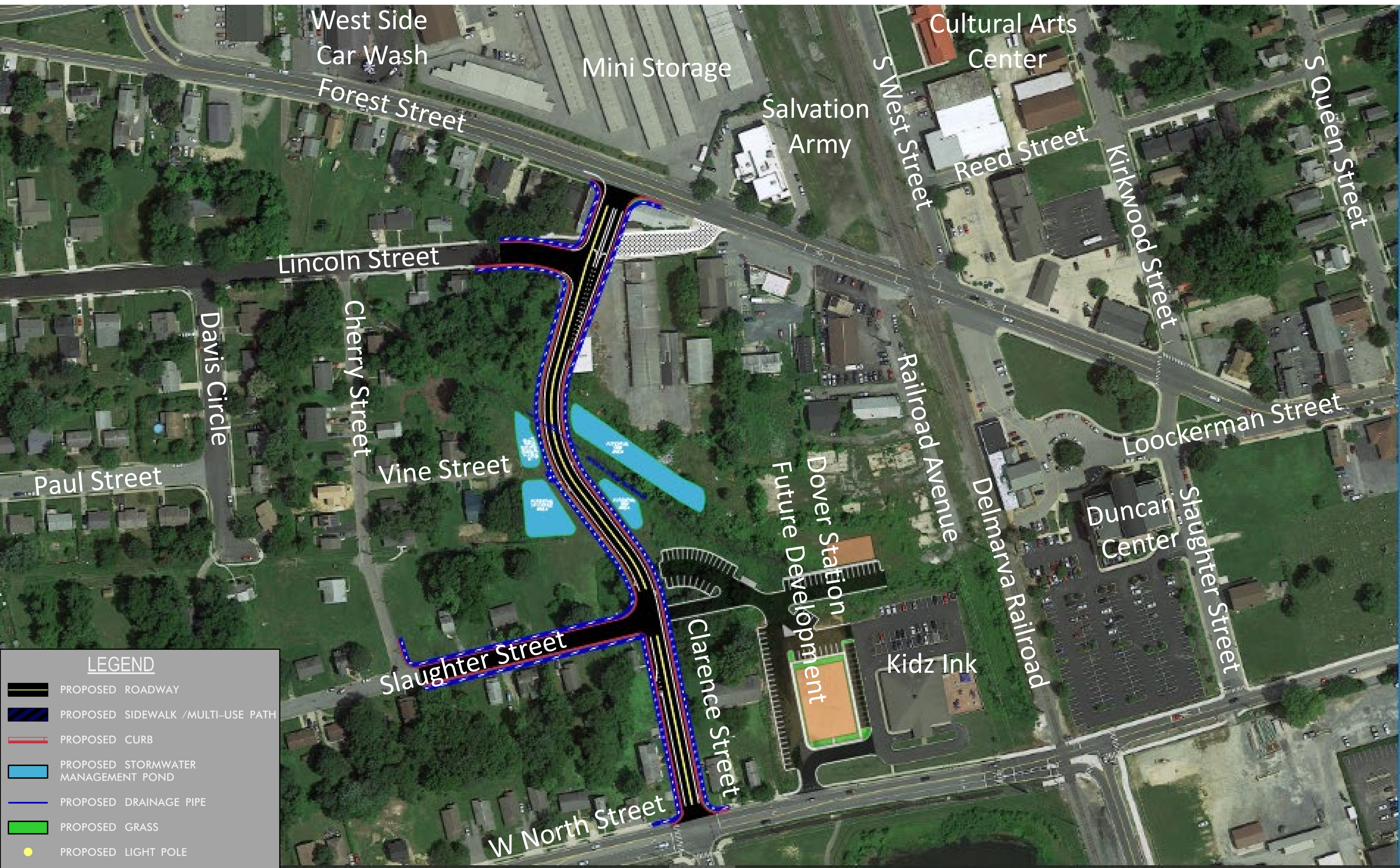
Alt A On-Street Parking





Alternative A - North

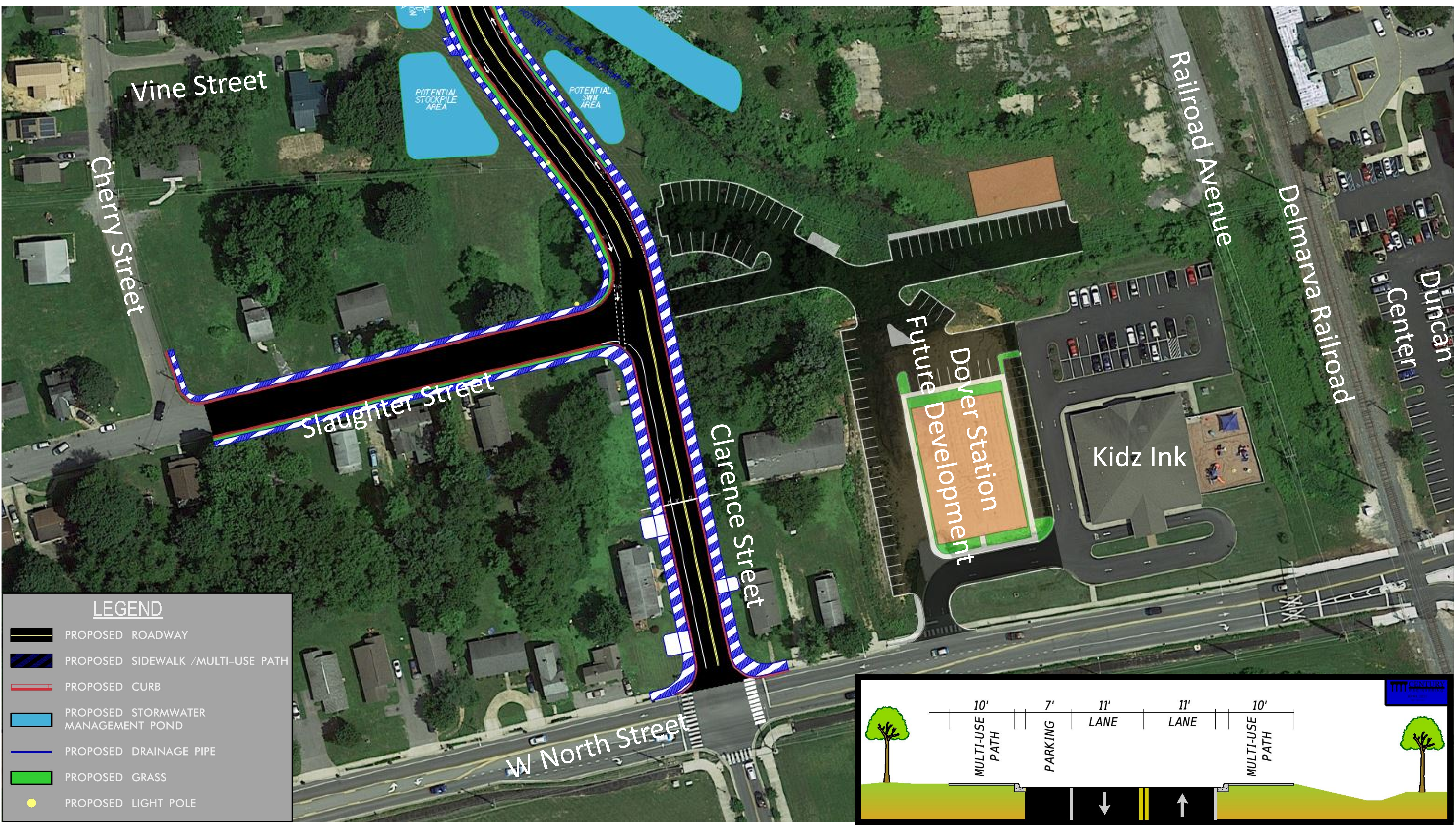




Alternative B

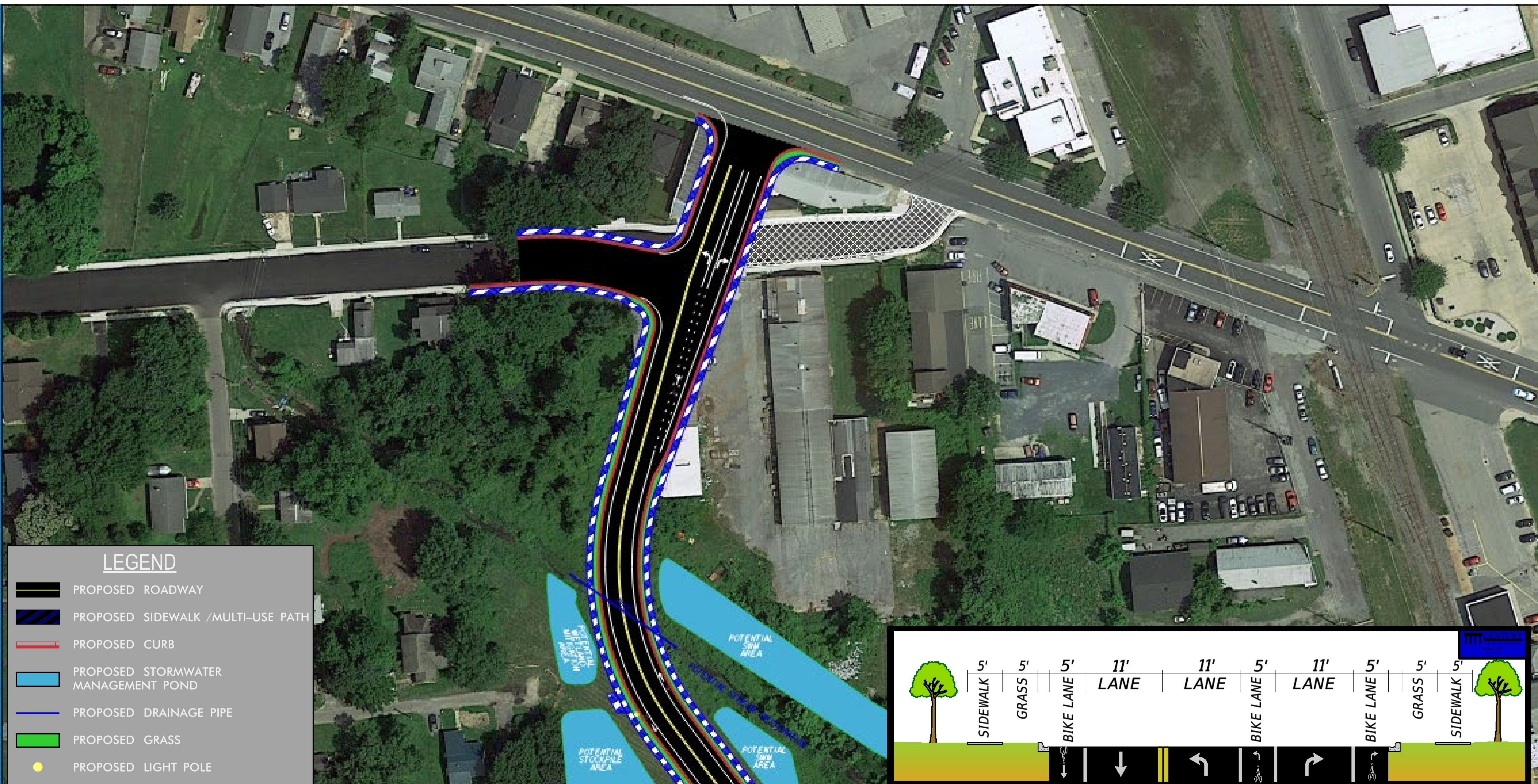






Alt B On-Street Parking





Alternative B - North



Alternative A



Alternative B



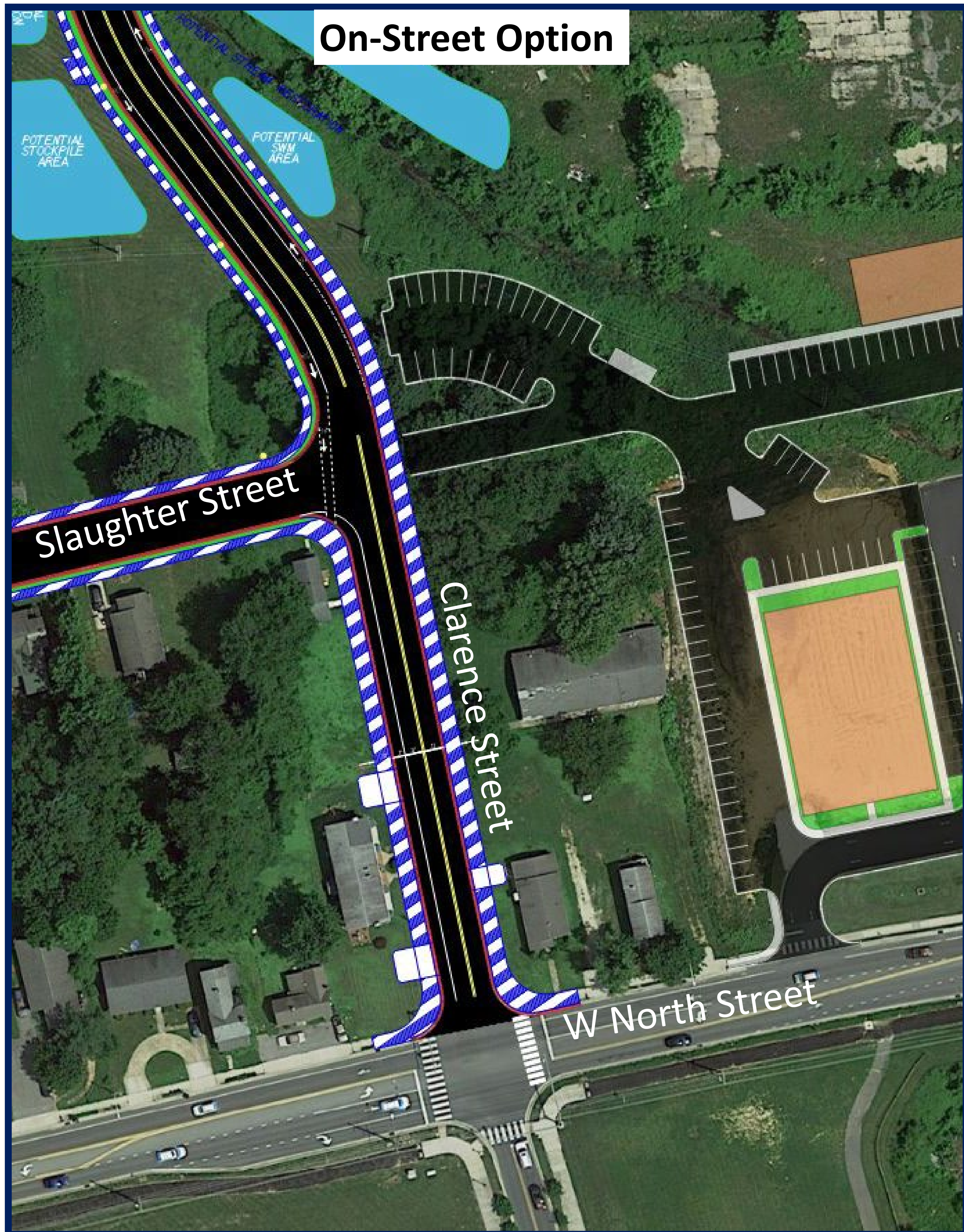
Alternatives Comparison



Off-Street Option

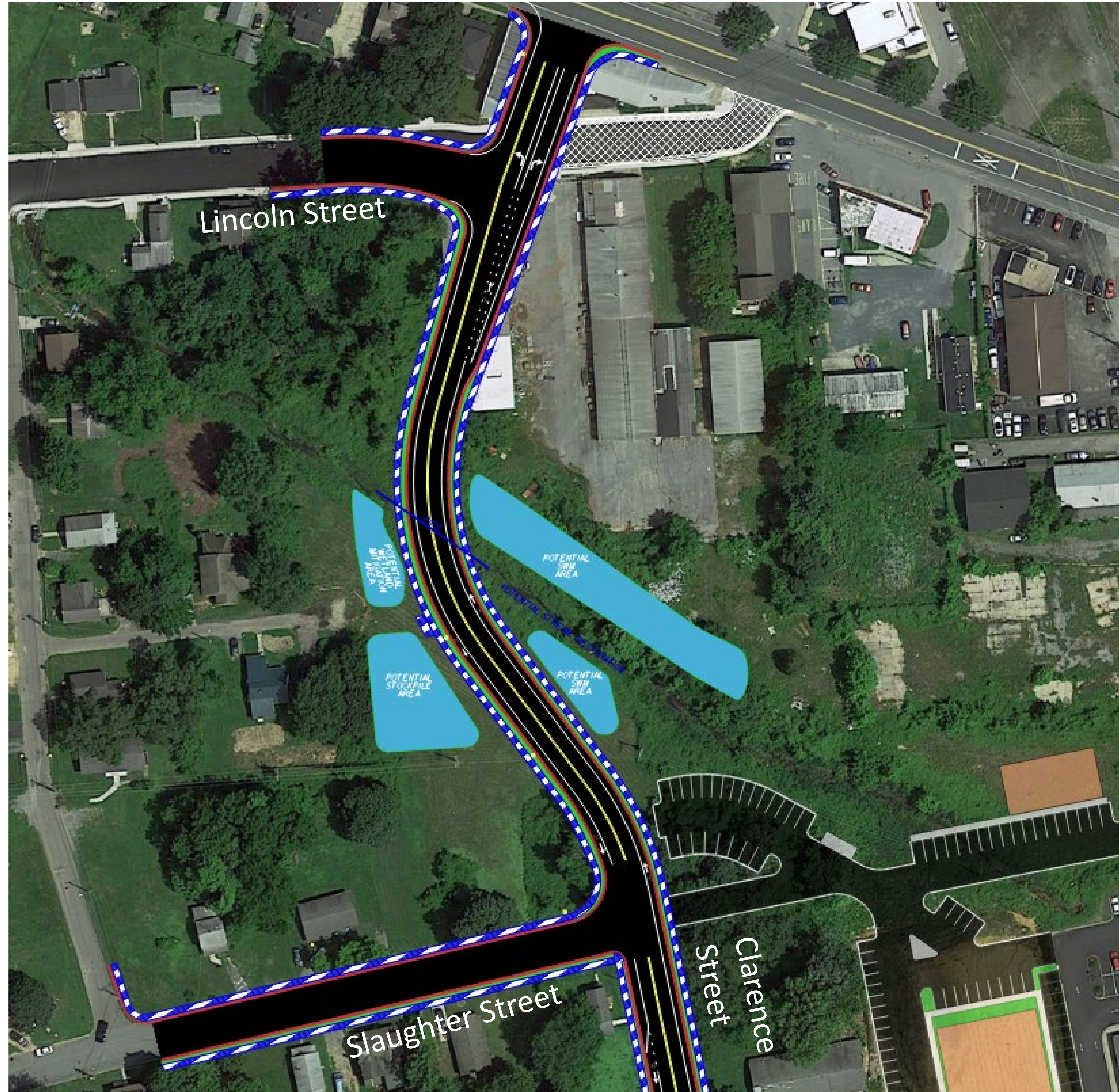


On-Street Option



Parking Options Comparison

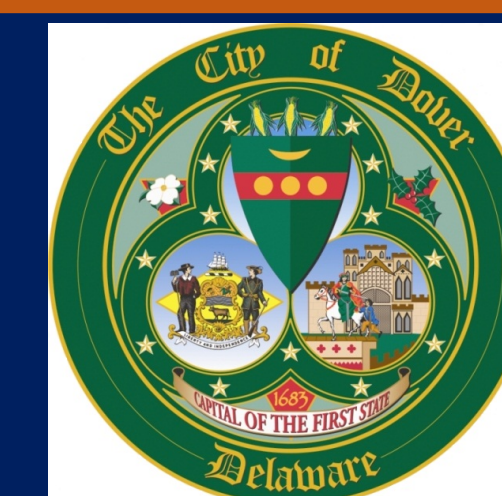




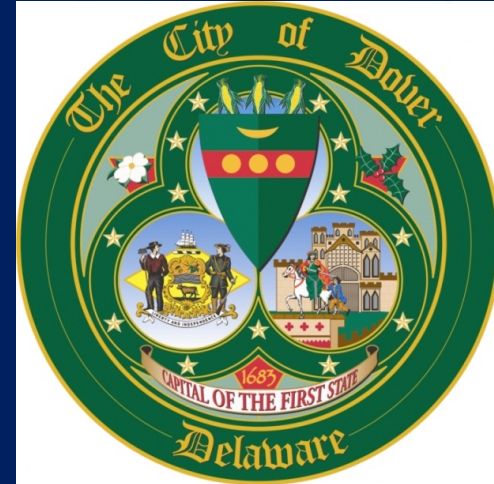
Storm Water Ponds



Preliminary Engineering	\$1,092,530.00
Right-of-Way	\$1,000,000.00
Construction	\$3,605,523.53
Total Cost	\$5,698,053.53



Preliminary Engineering	\$1,103,550.00
Right-of-Way	\$1,000,000.00
Construction	\$3,637,001.25
Total Cost	\$5,740,551.25



Preliminary Engineering	\$1,045,330.00
Right-of-Way	\$1,300,000.00
Construction	\$3,470,656.81
Total Cost	\$5,815,986.81



Preliminary Engineering	\$1,056,520.00
Right-of-Way	\$1,300,000.00
Construction	\$3,502,631.14
Total Cost	\$5,859,151.14

Alternative A

- Ties Into Forest Street 600 Feet West of Delmarva Railroad Tracks
- Requires the Full Purchase of Three Residential Properties
- Requires the Partial Purchase of Three Properties
 - Residential, Institutional/Office, Commercial

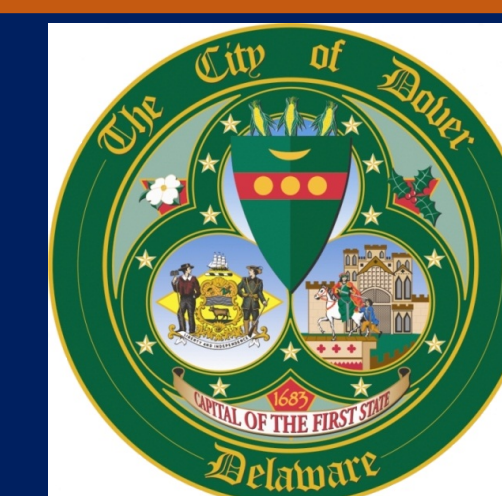
Alternative B

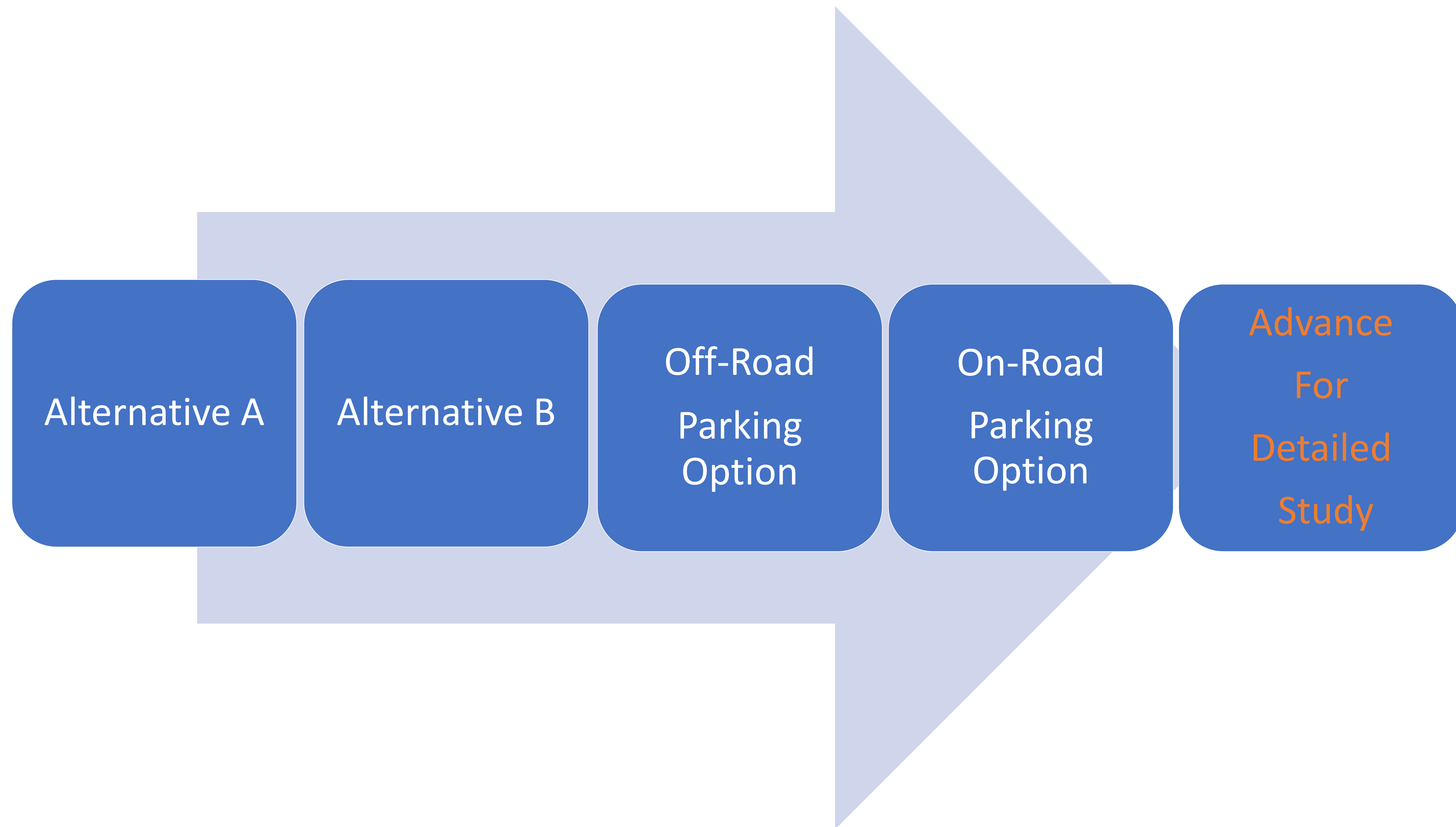
- Ties Into Forest Street 500 Feet West of Delmarva Railroad Tracks
- Requires the Full Purchase of Three Properties
 - Two Residential, One Commercial
- Requires the Partial Purchase of Three Properties
 - Residential, Institutional/Office, Commercial



Alternatives A & B

- North and South Termini Forest Street and W. North Street
- Identical from W. North Street to Slaughter Street
- Meet Project Need
- Off-Road and On-Road Parking Options Feasible
- Costs are Similar
- Neither Clearly Favored by Public



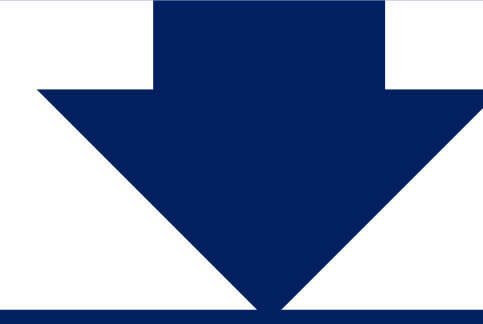


Recommendations



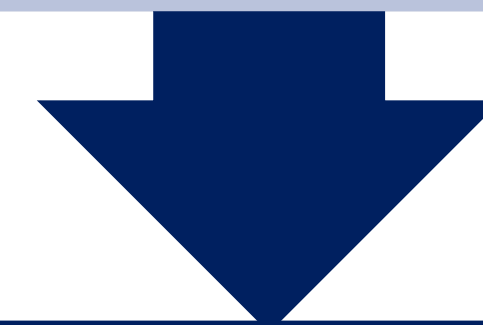
Recommendations to Public Advisory Committee

October 14, 2021



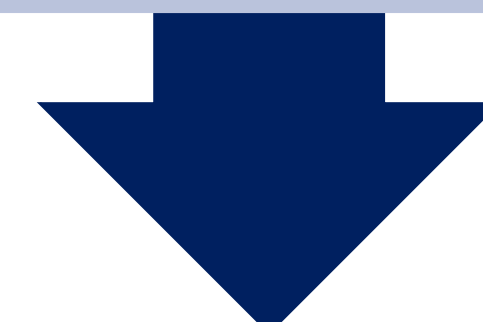
Recommendations to Technical Advisory Committee

October 19, 2021



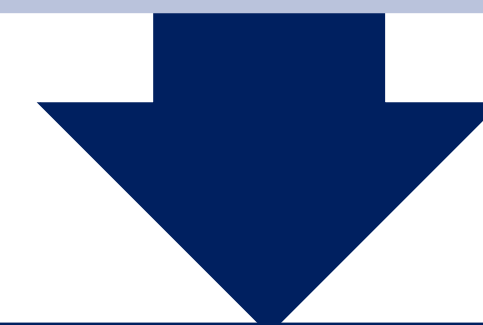
Recommendations to MPO Council

November 3, 2021



Amend MTP

Once Adopted



Project Recommendation Prioritization

For Inclusion In TIP

Next Steps



Thank You!!

Thank You

