



Journeys November 21

November 2021

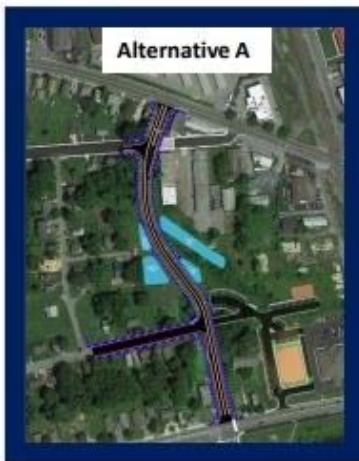
Newsletter for Dover/Kent County Metropolitan Planning Organization



Banning Clarence Street Study now Final



Banning Clarence Street Study PEL Report



November 2021



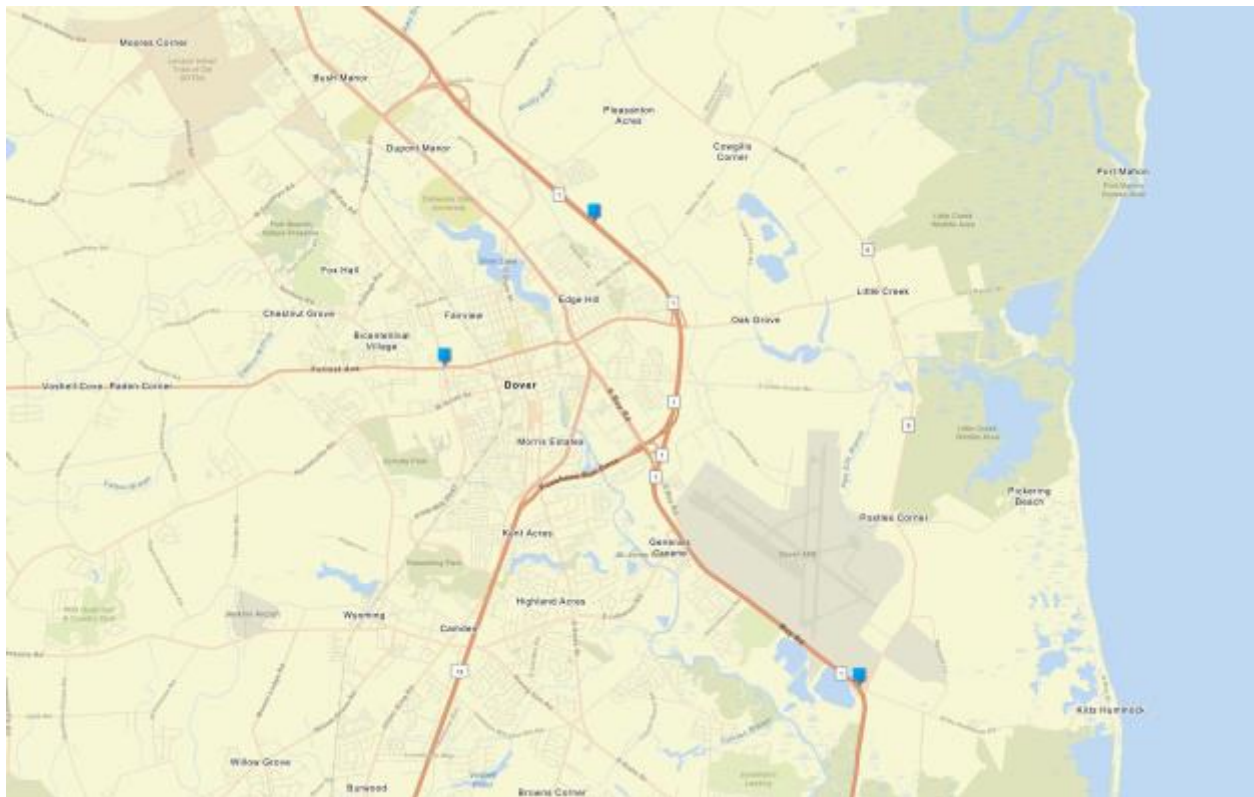
The Dover/Kent County MPO council voted to move forward after certain questions are answered and concerns met during their last meeting on November 3rd. The final report can be viewed under "Studies" on the Dover/Kent MPO website.

This study looks at several alternatives to connect Forrest Avenue and Eden Hill.

The overall project is still in it's infancy. While this phase is now considered final, questions are always welcome during this process.

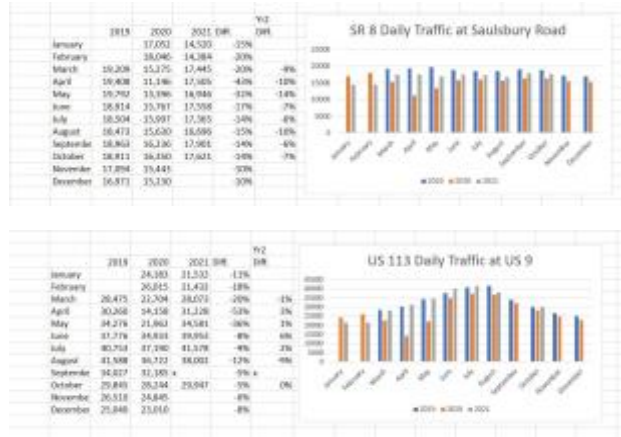
If you have any questions about the study, you can email James Galvin at james.galvin@doverkentmpo.org.

Mike's Map of the Month!



1 - This is a covid map that shows traffic both pre-covid and during covid. We are now seeing traffic patterns return to pre-covid levels.





These are some graphics that illustrate the information on the map.

Holiday Savings for New E-Z Pass Accounts Begins on Black Friday

Holiday Savings for New E-Z Pass Accounts Begins on Black Friday

Free transponder when you open an Individual Account on November 26, 2021 through December 31, 2021 or while supplies last.

Beginning Friday, November 26, 2021 through Friday, December 31, 2021, new E-Z Pass customers will receive a free Transponder (\$15 value) with each individual account opened during that time. This promotion is open to residents of every state, not just Delaware residents.

Nearly 75% of drivers are already saving time and money on Delaware toll roadways with E-Z Pass. Save an additional \$15 by creating a new E-Z Pass account today—it's easy to get started!

- Open a personal account at ezpassde.com or stop by a Toll Plaza or the E-Z Pass Customer Service center. (Please note: DMV locations are unable to offer the transponder promotion. New commercial E-Z Pass accounts and E-Z Pass On the Go sales are not eligible. For complete eligibility information, FAQs, and more, visit ezpassde.com)**
- Load the account with a minimum of \$25, which can be replenished automatically or manually.**
- Receive a free Transponder (\$15 value) in the mail after 7-10 business days, complete with new account information and welcome packet.**

The promotion will run only as long as transponder supplies last or through Friday, December 31, 2021. Accounts can also be opened by calling 1-888-EZPASSDE (1-888-397-2773).

Where will the MPO Parklet be next?

DOVER/KENT COUNTY MPO
METROPOLITAN PLANNING ORGANIZATION

Welcome to
our Parklet!

Tell us what you
think. Scan the
QR code to do a
short survey!

We will see you on First Friday in December at Downtown Dover! Also, you can see the parklet by coming to the MPO office on 1783 Friends Way in Camden and coming to the 3rd floor. The parklet is set up in our lobby!

See our latest DMV ad!



<https://sway.office.com/FhLxCIVFASaeca0H#content=wIOv36oWtSpVhF>

2 - Do you have an idea for a video? Let Helen know by emailing or texting her at helen.wiles@doverkentmpo.org!

Happy Thanksgiving!

Happy Thanksgiving Day!

From our family to yours!

DoverKentMPO.org



<https://sway.office.com/FhLxCJVFASaecq0H#content=WRg4yFZ2OFk3Rp>

Upcoming Meetings





Follow us on all social media platforms for more fun!! @doverkentmpo



Yep....we are on there!
@doverkentmpo
on all social media platforms!



Thanks for subscribing to Journeys!



The MPO Council

Mayor Robin R. Christiansen

Chairman

City of Dover

Joanne Masten

(For President Terry Pepper)

Kent County Levy Court

Mayor James Frazier

Town of Magnolia

(for Kent County Municipalities)

John Sisson

Vice-Chairman

Delaware Transit Corp

Pam Steinbach

(For Secretary Nicole Majewski)

Delaware Dept of Transportation

Kimberly Chesser

Dept of Homeland Security

(For Governor John Carney)

The MPO Staff

Executive Director: Marilyn J. Smith

Principal Planner: Jim Galvin

GIS Planner: Mike Ward

Public Outreach: Helen Wiles

Executive Asst.: Michelle Vinson

The MPO Office is located at

1783 Friends Way

Camden DE 19934

Phone 302.387.6030

www.doverkentmpo.org

The preparation of this document was financed in part with funds provided by the Federal Government, including the Federal Transit Administration, through the Joint Funding Simplification Program, and the Federal Highway Administration of the United States Department of Transportation.

