

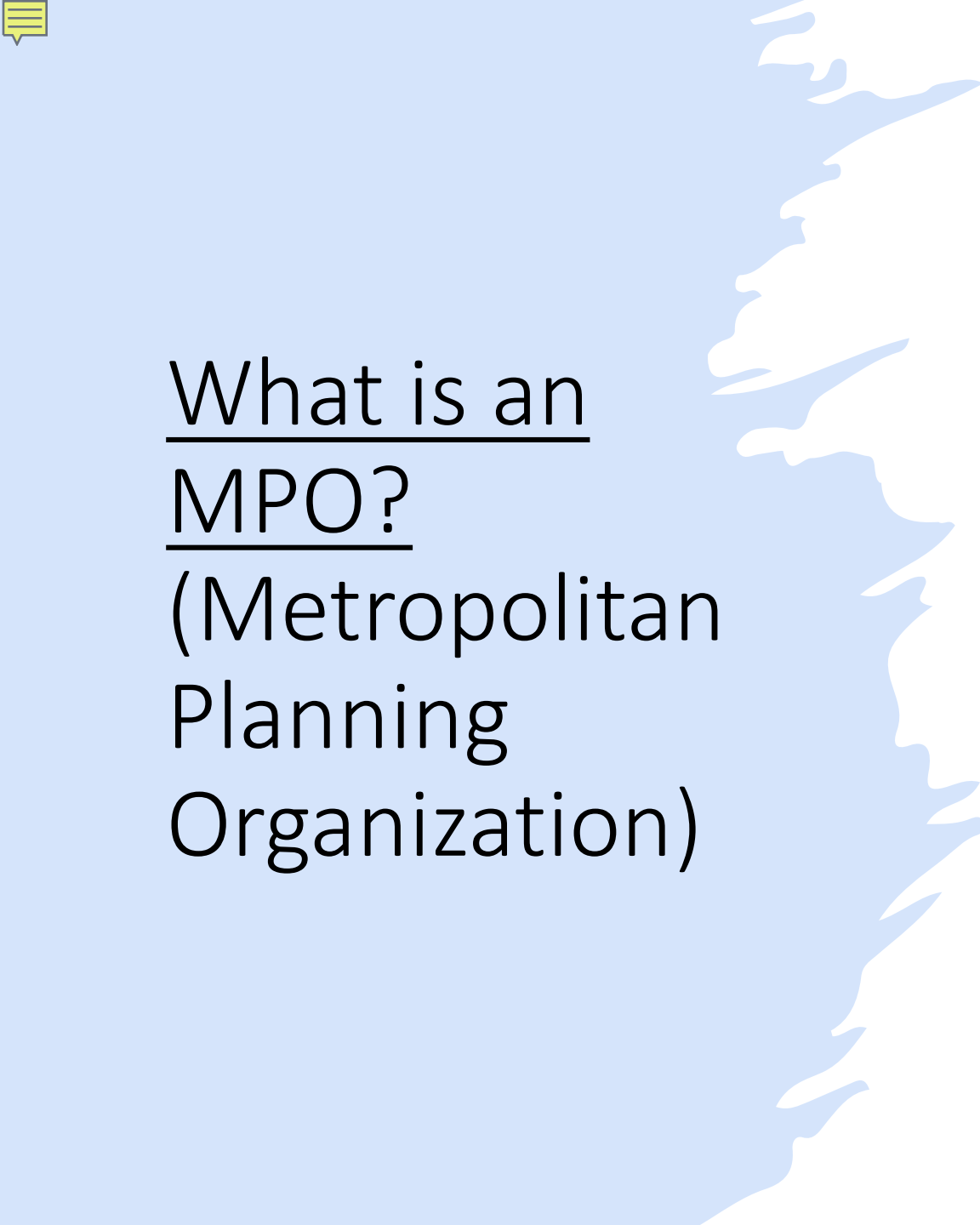

DOVER/KENT COUNTY MPO

METROPOLITAN PLANNING ORGANIZATION



Helen Wiles, Public Outreach Manager

www.doverkentmpo.org



What is an MPO? (Metropolitan Planning Organization)

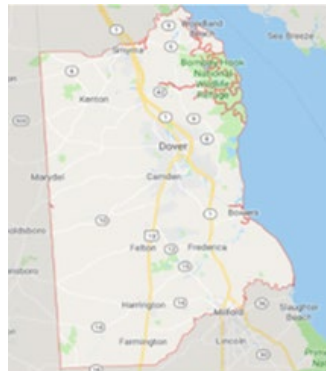
- MPOs are federally mandated and mostly federally funded (80% federal, 20% state and local)
- All urban areas over 50,000 in population are required to have an MPO if federal funds will be spent on transportation improvements
- Transportation planning and policy-making organizations
 - We're all about infrastructure
 - Everything that needs to be in place to get you from point A to point B, regardless of which mode of transportation you're using
 - Which projects are coming up that need federal funding
- Coordinate with DeIDOT, DART and municipalities to prioritize projects and set spending levels for federal funds designated for transportation projects
- Work with partners on issues such as air quality, environmental justice, safety, economic growth, public mobility
- Focused on public input and participation



Dover / Kent County MPO

Innovation 2045 MTP Project Cost by Type and Term (as of August 13, 2020)				
Project Type	Near Term (2021-2026)	Mid Term (2027-2034)	Long Term (2035-2045)	Aspiration Projects
Roadway	\$65,443,400.00	\$211,396,200.00	\$80,188,000.00	\$2,500,000.00
Study	\$0.00	\$0.00	\$0.00	\$2,200,000.00
Multi-modal	\$42,087,500.00	\$18,962,000.00	\$4,728,000.00	\$2,550,000.00
Bike	\$18,400,000.00	\$23,740,000.00	\$7,092,000.00	\$0.00
Pedestrian	\$15,740,000.00	\$5,678,000.00	\$1,900,000.00	\$0.00
Transit	\$14,921,400.00	\$0.00	\$0.00	\$0.00
Freight	\$2,875,000.00	\$26,525,000.00	\$0.00	\$0.00
Safety projects	\$58,400,000.00	\$0.00	\$0.00	\$0.00
Total	\$217,867,300.00	\$286,301,200.00	\$93,908,000.00	\$7,250,000.00
Total + Aspiration Projects	\$605,326,500.00			

2021 MTP Project Count as of 13 August 2020				
	Near Term 2021-2026	Mid Term 2027-2034	Long Term 2035-2045	Aspiration Project
Roadway	22	27	3	1
Studies	0	0	0	45
Multi-Modal	10	10	2	9
Bicycle	8	11	3	0
Pedestrian	9	4	2	0
Transit	3	0	0	0
Freight	5	5	0	0
Safety	4	0	0	0
Total	61	57	10	55
Combined Total	183			
	There are 12 Roadway projects which continue into another Term (10 Near into Mid and 2 Mid into Long). So, in reality, there is only 171 Projects			

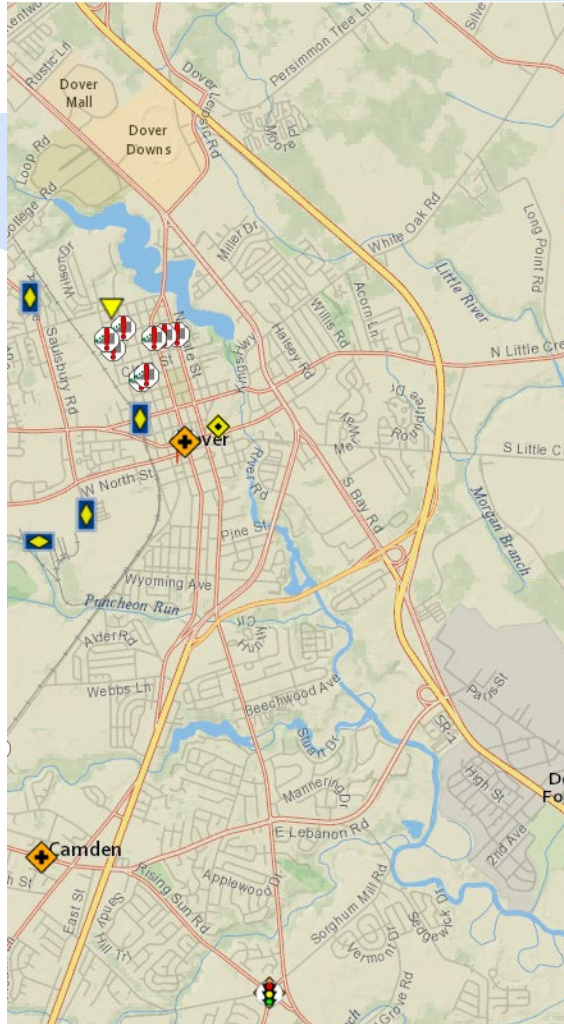
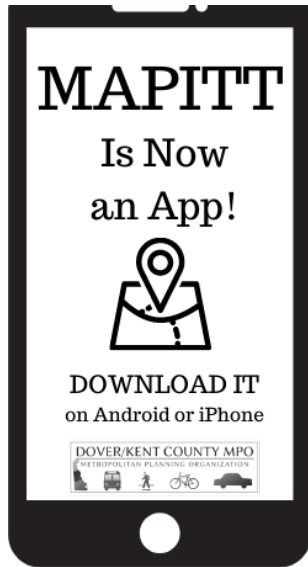
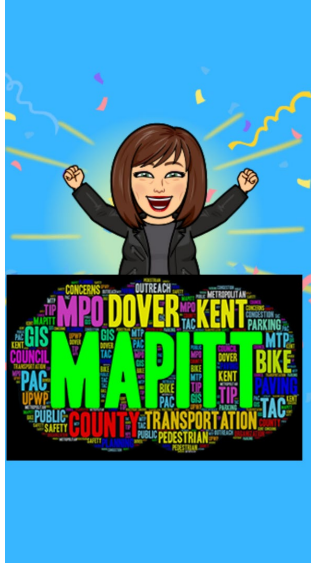


- Dover/Kent County MPO has existed since 1992
- Cover Kent County – 586 square miles, 3 cities and 17 towns
- Long-range plan or MTP (Metropolitan Transportation Plan)
 - What Kent County will need over the next 20 years
 - “Innovation 2045” adopted January 2021 – www.doverkentmpo.org/innovation2045
 - Use the MTP to create a TIP (Transportation Improvement Plan) – goals and priorities for the immediate four years
 - Must match DeIDOT priorities/plan
 - Amended as new projects are studied and recommendations are made

Public Participation Plan

- This document is a roadmap for how we will get your voice heard
- Draft is currently seeking comments
- Copies available





MAPITT

An app that lets the public report transportation issues or share ideas, on the spot

Available on Google Play and Apple App Store

Let your voice be heard

See the MAPITT Issue Map [here](#)

Questions?

Connect with Us -
#doverkentmpo

Thank you!

