



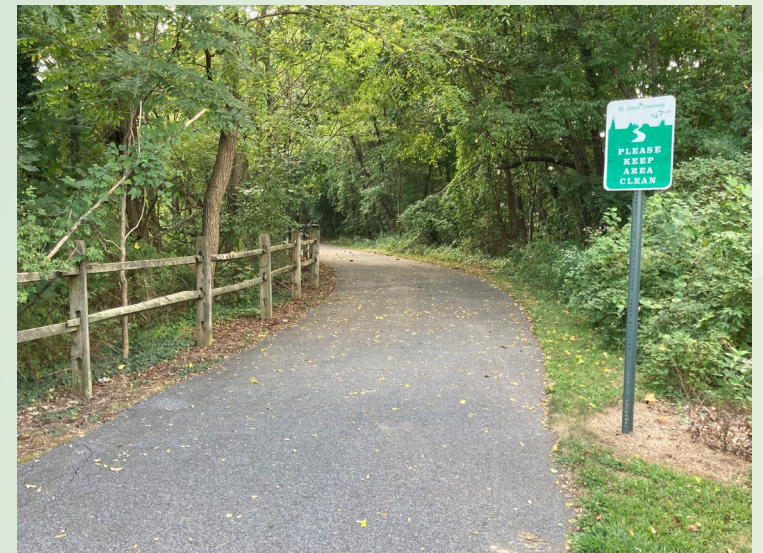
<https://doverkentmpo.delaware.gov/>

## Bay Road Pedestrian Path and Walking Trail Study

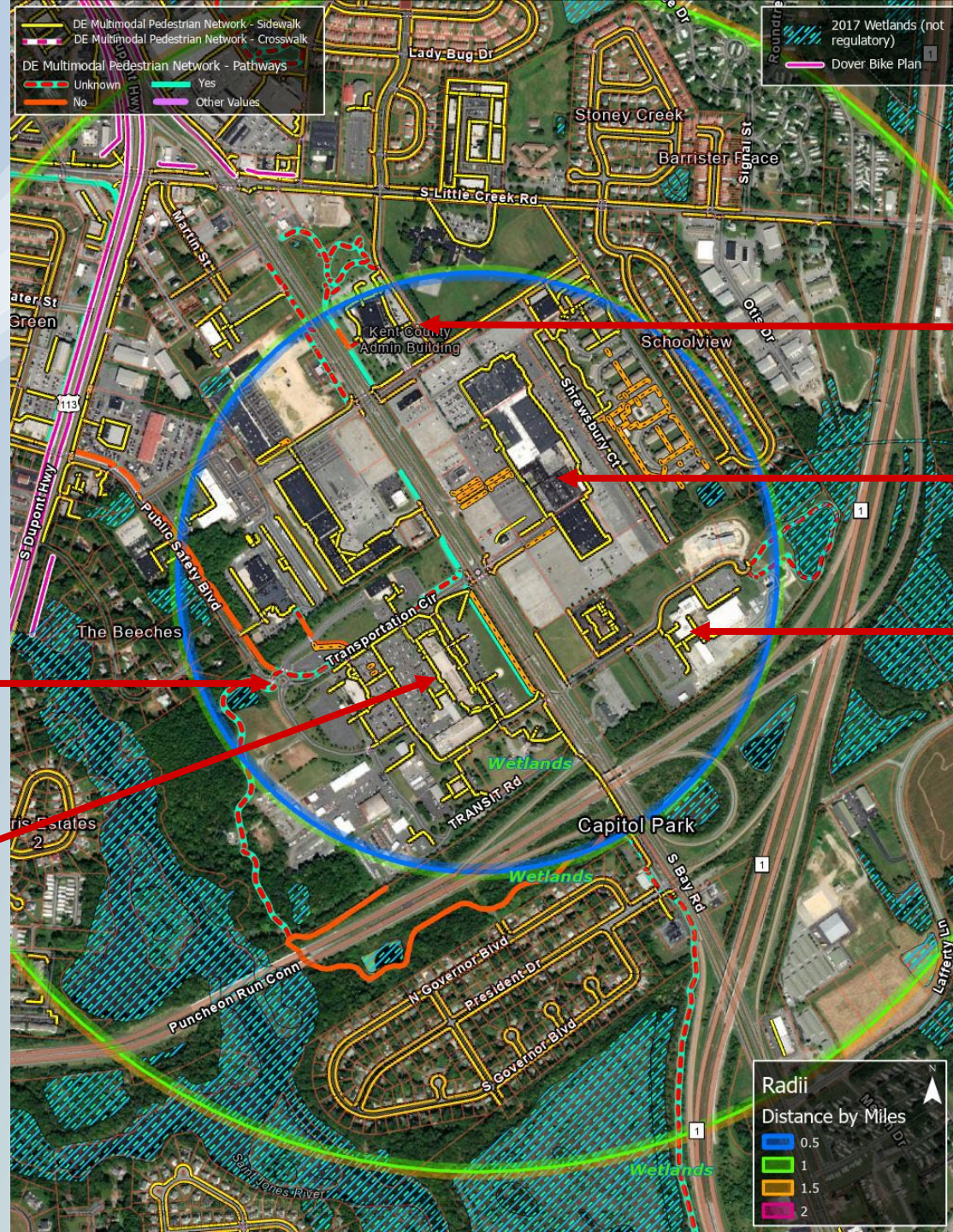
April 2023

# Study Background

- Sponsor: Chesapeake Utilities
- Purpose: Determine alternatives for improving pedestrian access between Energy Lane campus and St. Jones Greenway (Isaac Branch segment)
- Also exploring additional connections in Bay Road area, such as to nearby schools and businesses



**Immediate study area:  
Half-mile radius  
around Bay Road  
(blue circle)**



**Kent County offices**

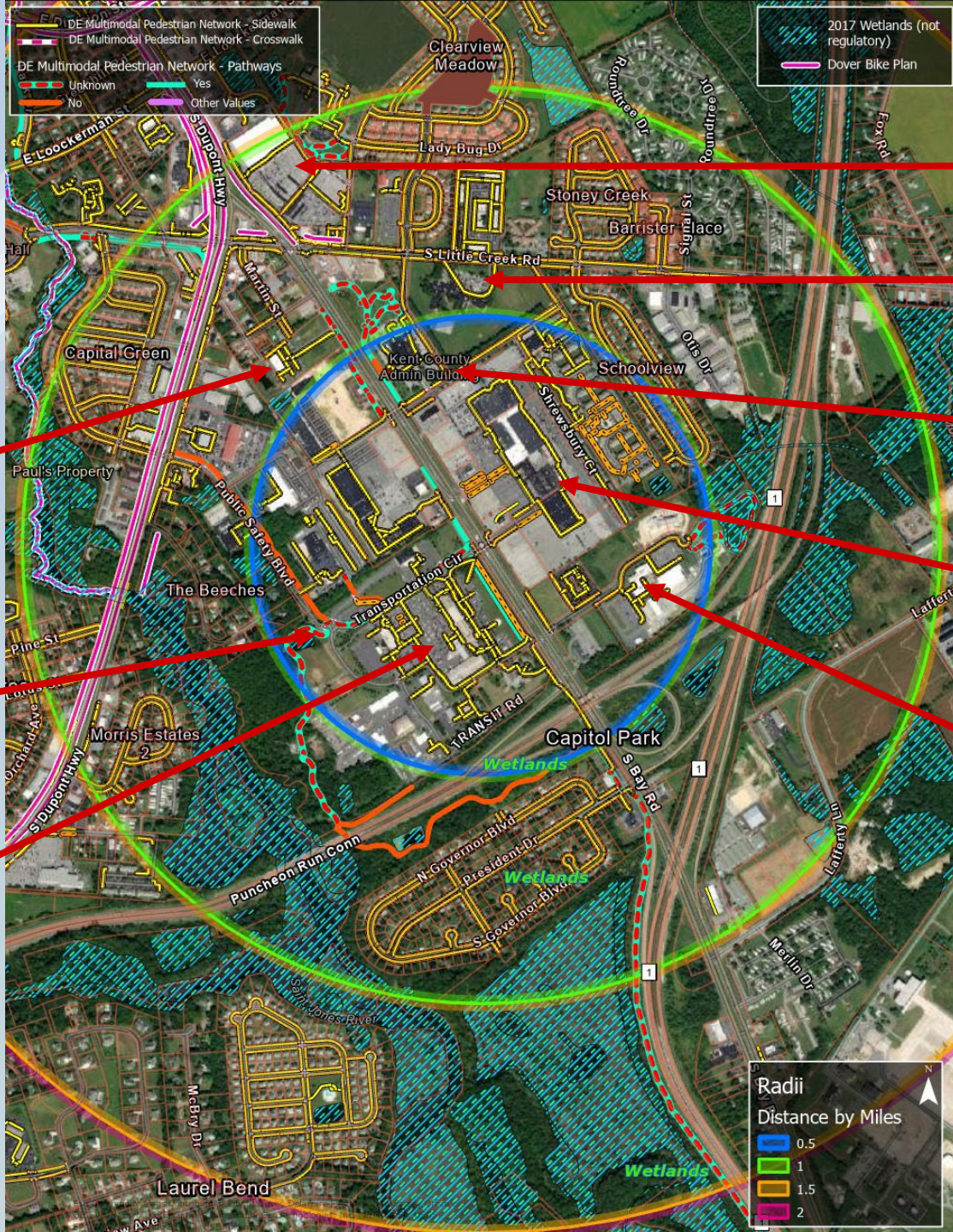
**Blue Hen Corporate Center**

**Chesapeake Utilities**

**St. Jones Greenway**

**DelDOT campus**

**Broader study area:  
One-mile radius  
around Bay Road  
(green circle)**



**Target and Safeway**

**East Dover Elementary**

**Kent County offices**

**Blue Hen Corporate Center**

**Chesapeake Utilities**

**Century Engineering**

**St. Jones Greenway**

**DelDOT campus**

**Full study area:  
Two-mile radius  
around Bay Road  
(pink circle)**



**Target and Safeway**

**East Dover Elementary**

**Kent County offices**

**Blue Hen Corporate Center**

**Chesapeake Utilities**

**Dover Air Force Base**

**Century Engineering**

**St. Jones Greenway**

**DelDOT campus**

# Next Steps

- PAC update – April 13
- TAC update – April 18
- Public workshop – April TBD
- PAC presentation – June 8
- TAC presentation – June 13
- MPO Council presentation – July 3
- Chesapeake Utilities presentation – TBD



Questions?

Send us an email:

[james.galvin@doverkentmpo.org](mailto:james.galvin@doverkentmpo.org)  
[malcolm.jacob@doverkentmpo.org](mailto:malcolm.jacob@doverkentmpo.org)

Thank you!