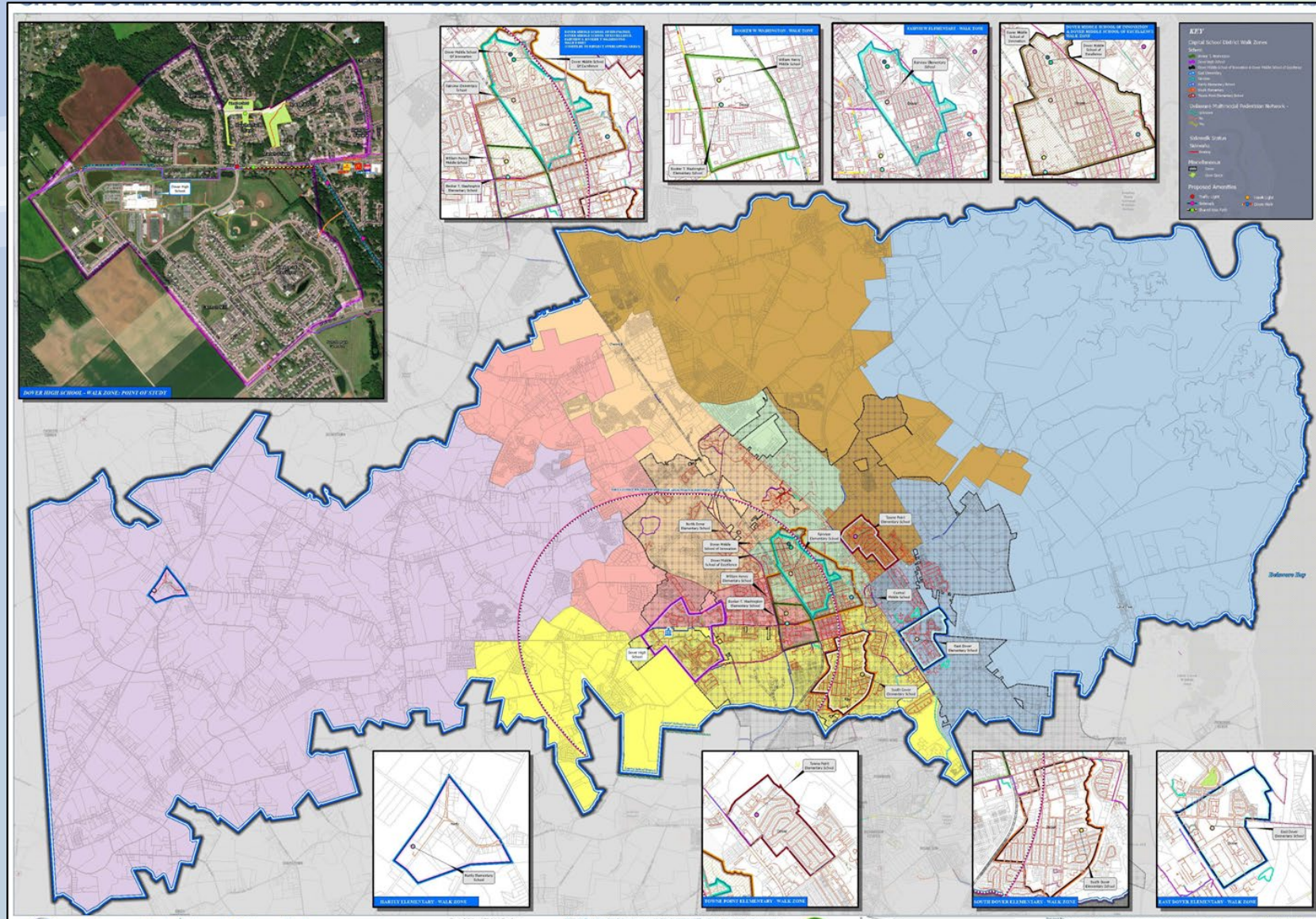




<https://doverkentmpo.delaware.gov/>

Dover High School Walk Zone
Pedestrian Improvements
April 2023

Capital School District



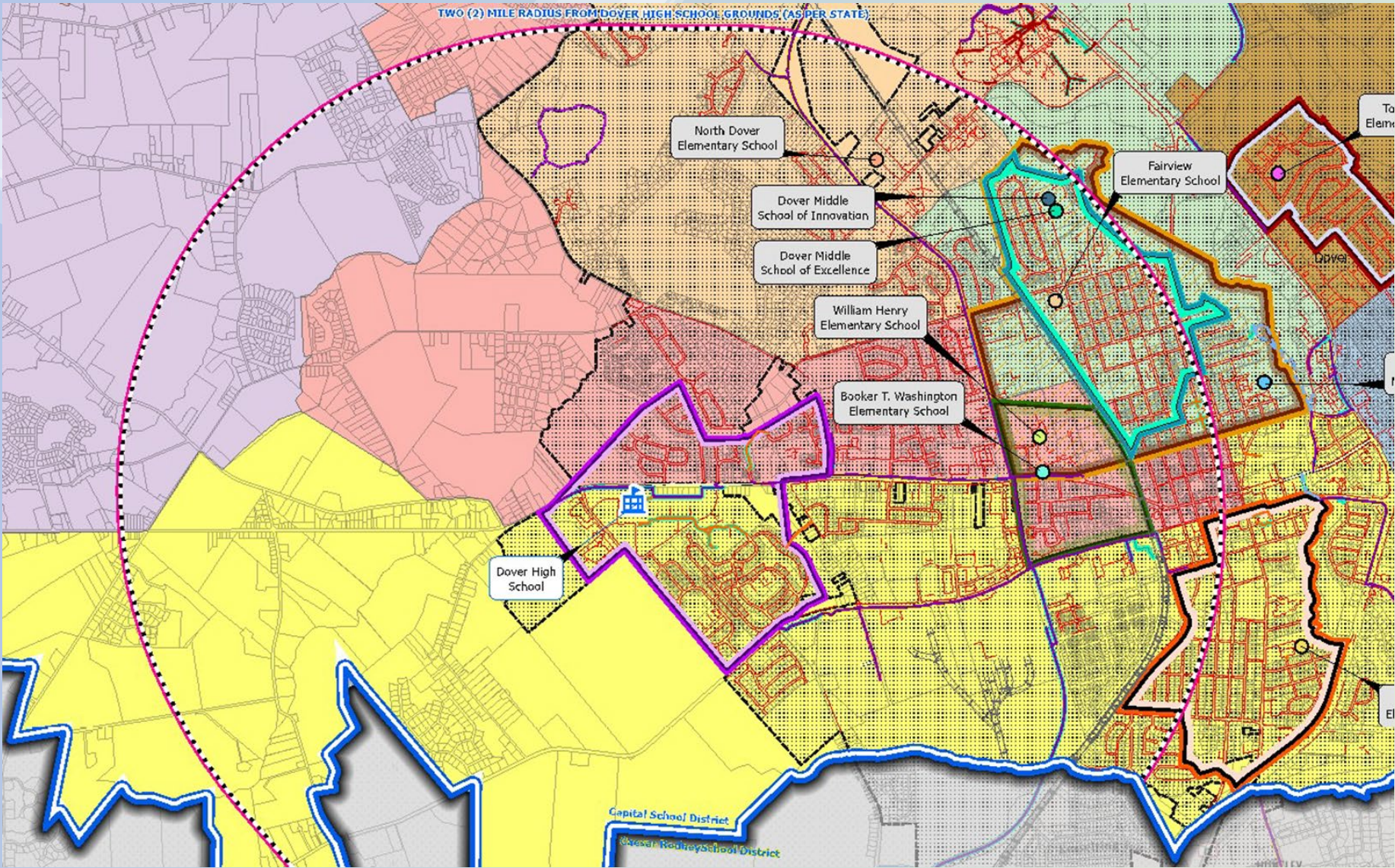
Department of Education Transportation Regulations

Students are eligible for transportation if they meet the following criteria:

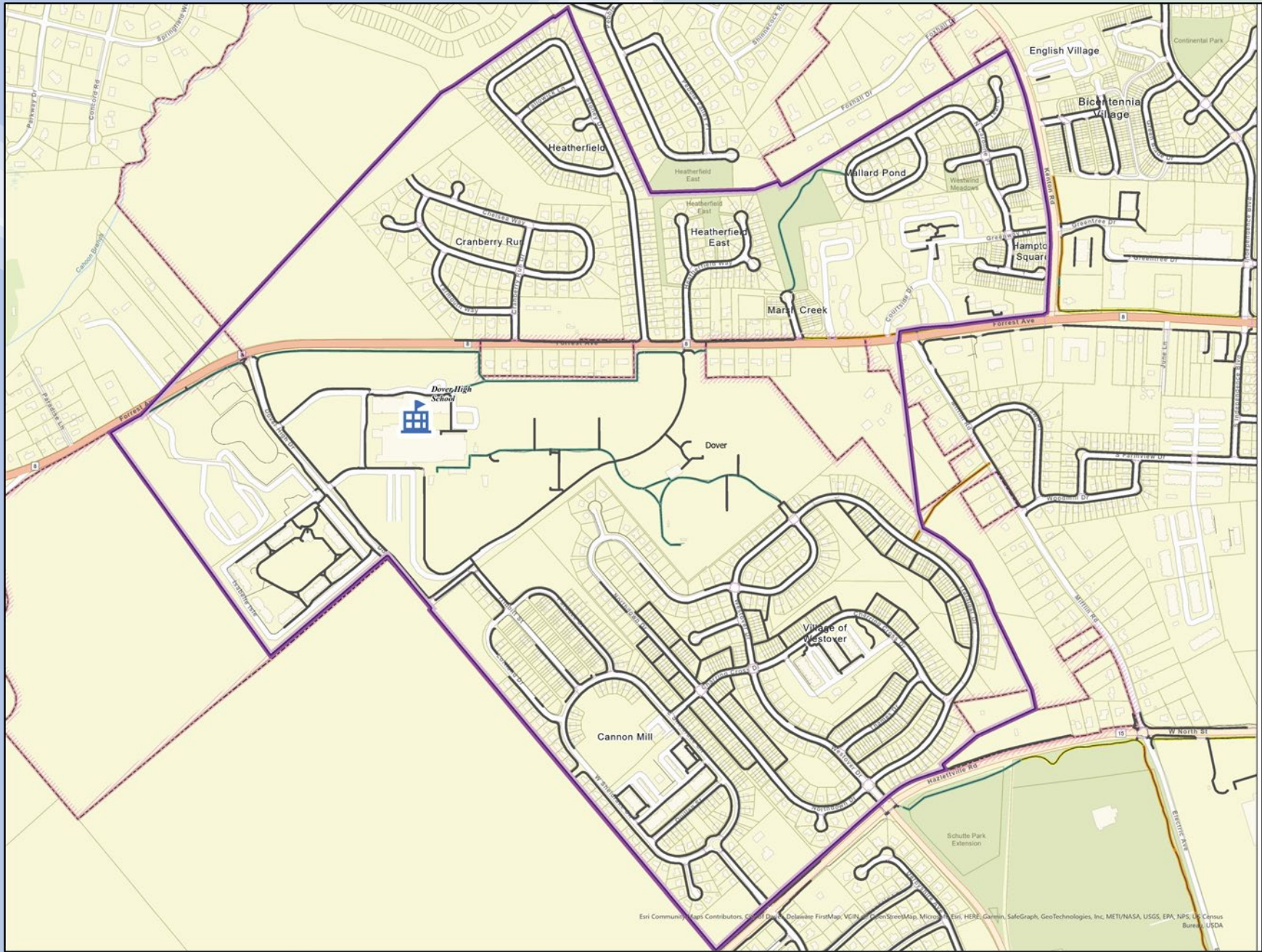
- Student's home address is assigned to the school they are enrolled;
- The student is in grade K-6 and they live more than one mile from the school;
- Or the student is in grade 7-12 and they live more than two miles from the school.
- A student that has transportation as a related service will receive transportation services.

Dover High School - Walking Regulations

- **13.0 Unique Hazards**
- **13.1 Individuals who desire to submit a request for exception to the transportation benefit criteria above because of a unique traffic hazard, also known as Unique Hazard, shall follow the procedures below.**
- **13.2 Procedures for handling Unique Hazards requests.**
 - **13.2.1 When the request for relief originates with parents, Guardians or Relative Caregivers of Pupils affected or vested officials, such as state and local police representatives, Safety Council representatives, and legislators, it shall be presented in writing to the local school authorities.**
 - **13.2.1.1 Districts shall make every effort to resolve problems identified by the parents, Guardians and Relative Caregivers vested officials, or by the District staff.**
 - **13.2.1.2 If the problem cannot be resolved by the District administration, the request shall be forwarded to the District board of education board of directors for appropriate action. If the District board of education board of directors has explored all of the local alternatives to resolve the problem without success, a request by board action shall be made to the Chairman of the Unique Hazards Committee (Education Associate for School Transportation)**



Dover High School – Regulated Walk Zone



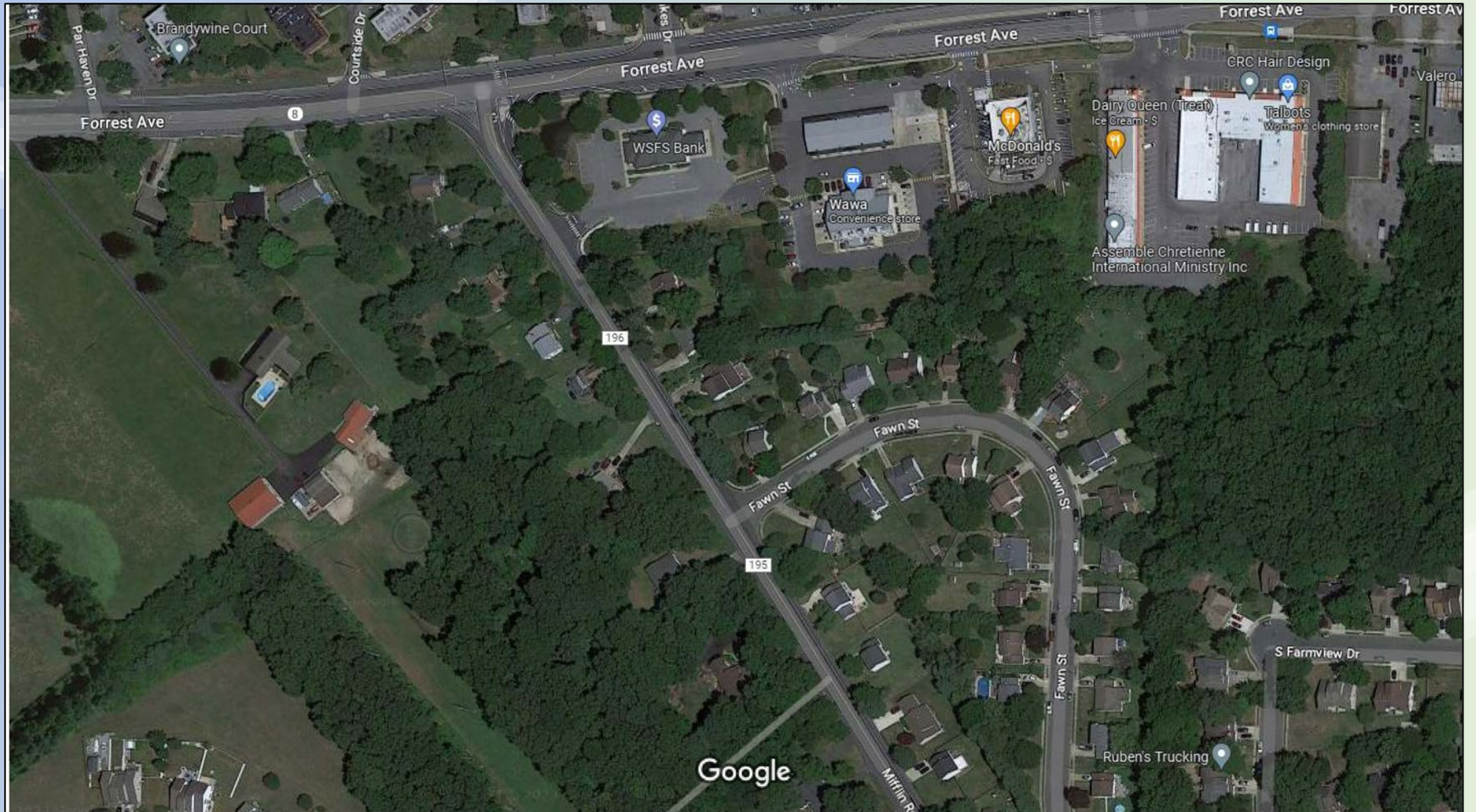
Dover High School - Current Walk Zone

Esri Community Maps Contributors, Garmin, DeLorme, FirstMap, VCity, OpenStreetMap, Microsoft, Esri, HERE, Garmin, SafeGraph, GeoTechnologies, Inc, METI/NASA, USGS, EPA, NPS, US Census Bureau, USDA

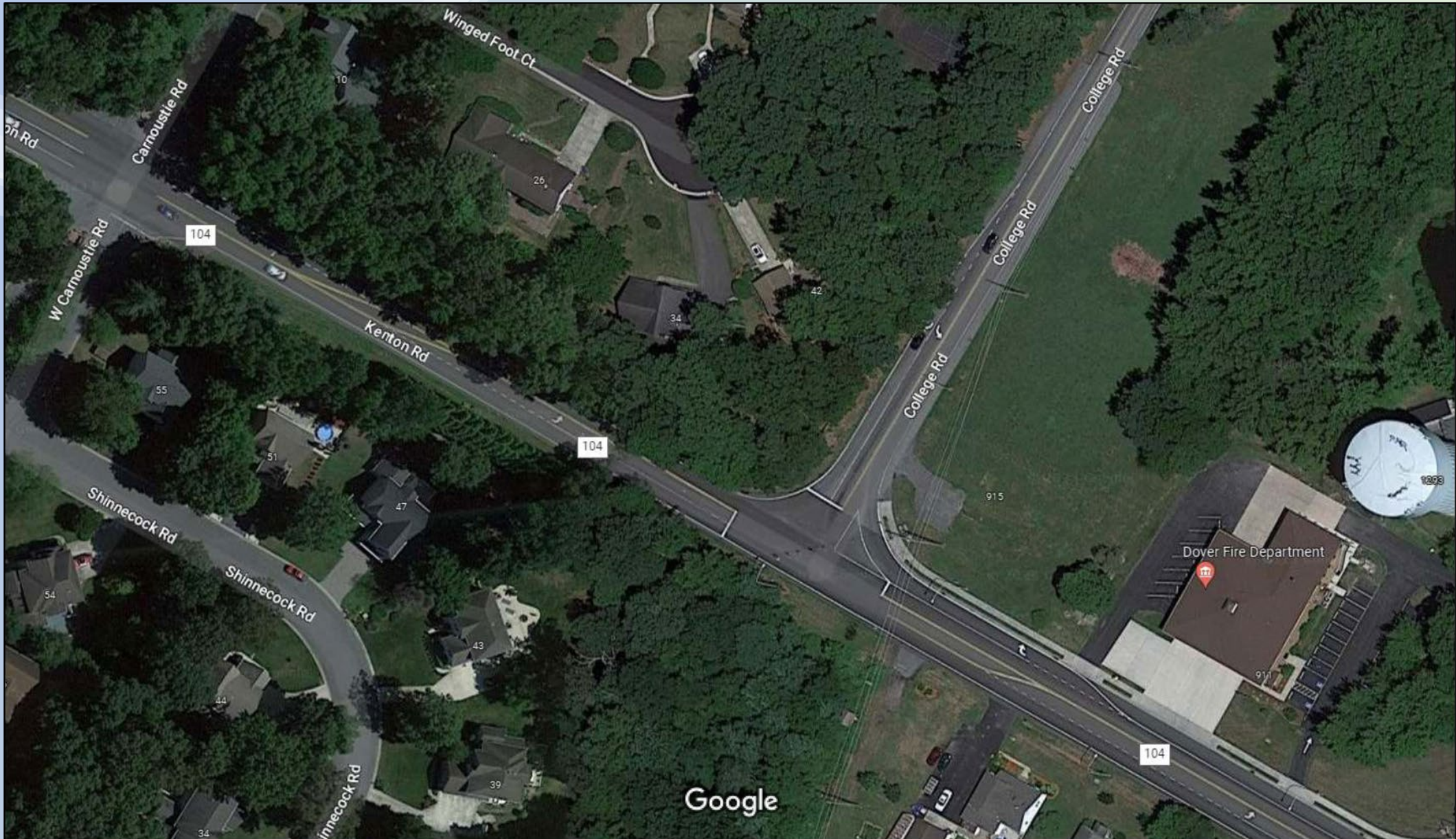
Walk Zone Impediments



Walk Zone Impediments

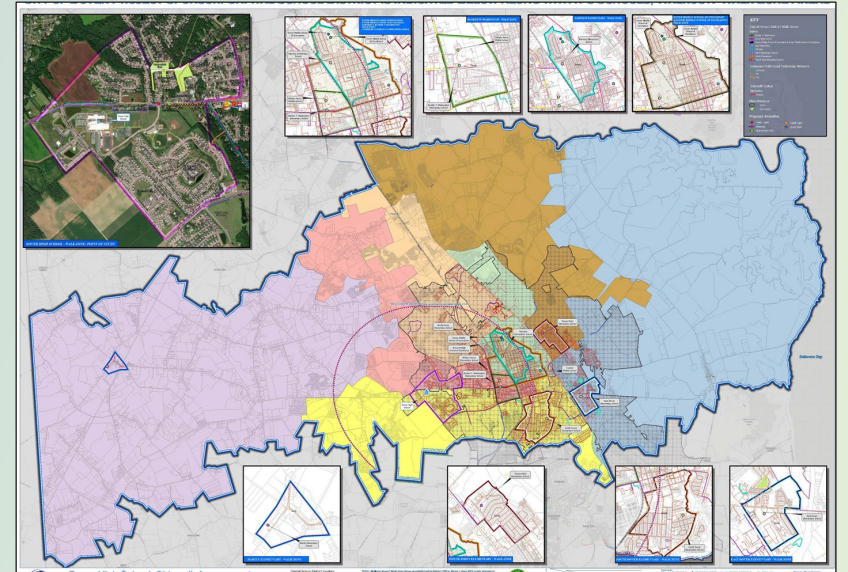


Walk Zone Impediments



Next Steps

- PAC update – April 13
- TAC update – April 18
- Student and parent survey - April
- Public workshop – April TBD
- PAC presentation – June 8
- TAC presentation – June 13
- MPO Council presentation – July 3
- Dover City Council presentation – TBD



Questions?

Send us an email:

james.galvin@doverkentmpo.org
malcolm.jacob@doverkentmpo.org

Thank you!