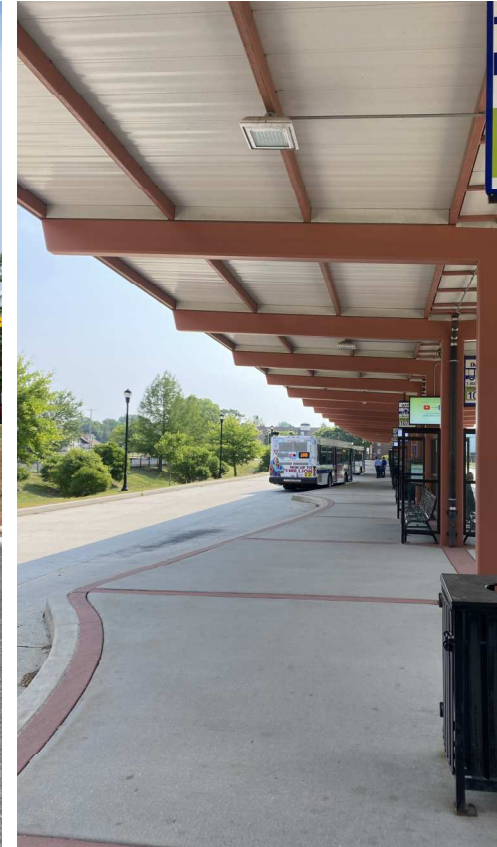


Downtown Dover Pathways

Public Workshop
Thursday, October 26, 2023



Meeting Purpose

1. Provide an overview of the study
2. Discuss existing conditions
3. Develop performance measures

Study Overview



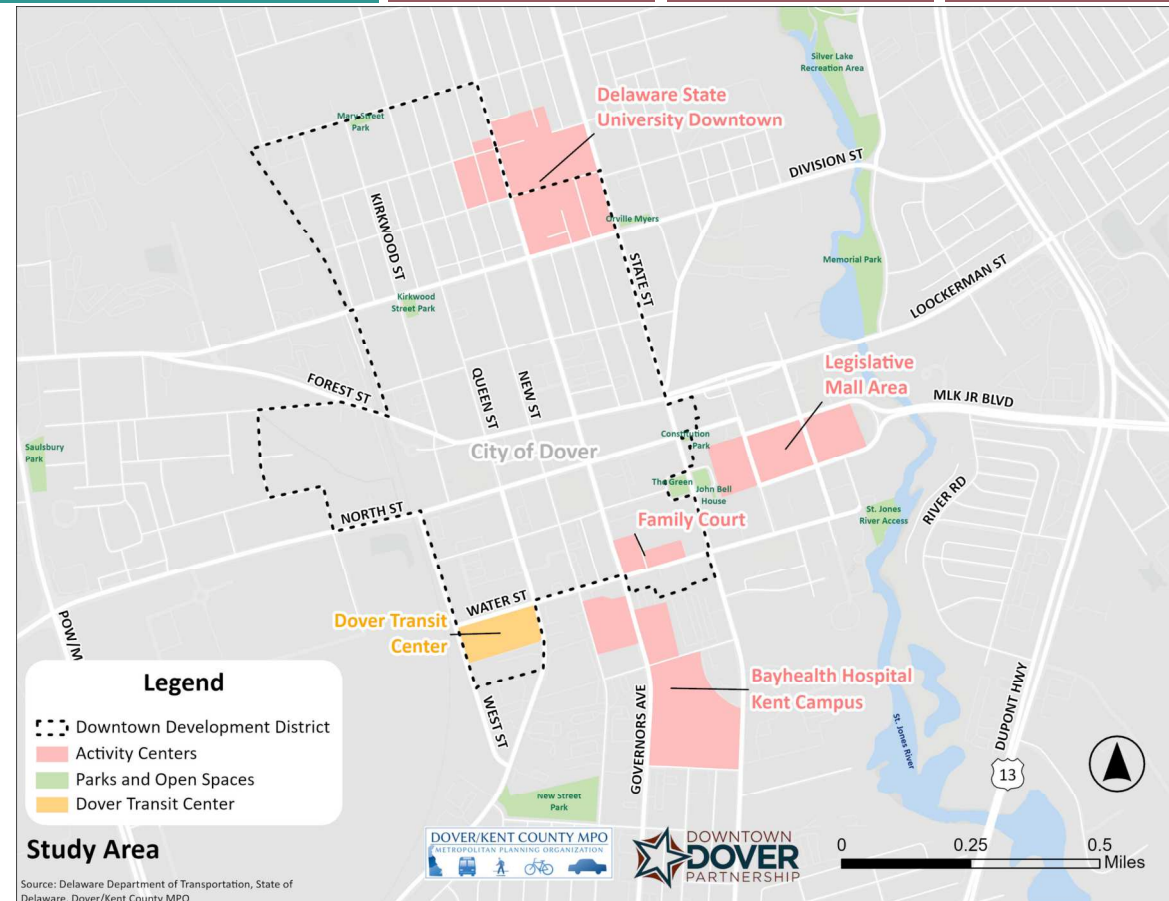
Overview

Downtown
Dover
Pathways

This study will identify means to better **connect key activity centers** within downtown Dover by walking, bicycling, scooter, or other **active transportation** and micromobility options.

Activity Centers:

- Bayhealth Hospital Campus
- Family Court
- Legislative Mall
- Delaware State University Downtown
- Dover Transit Center

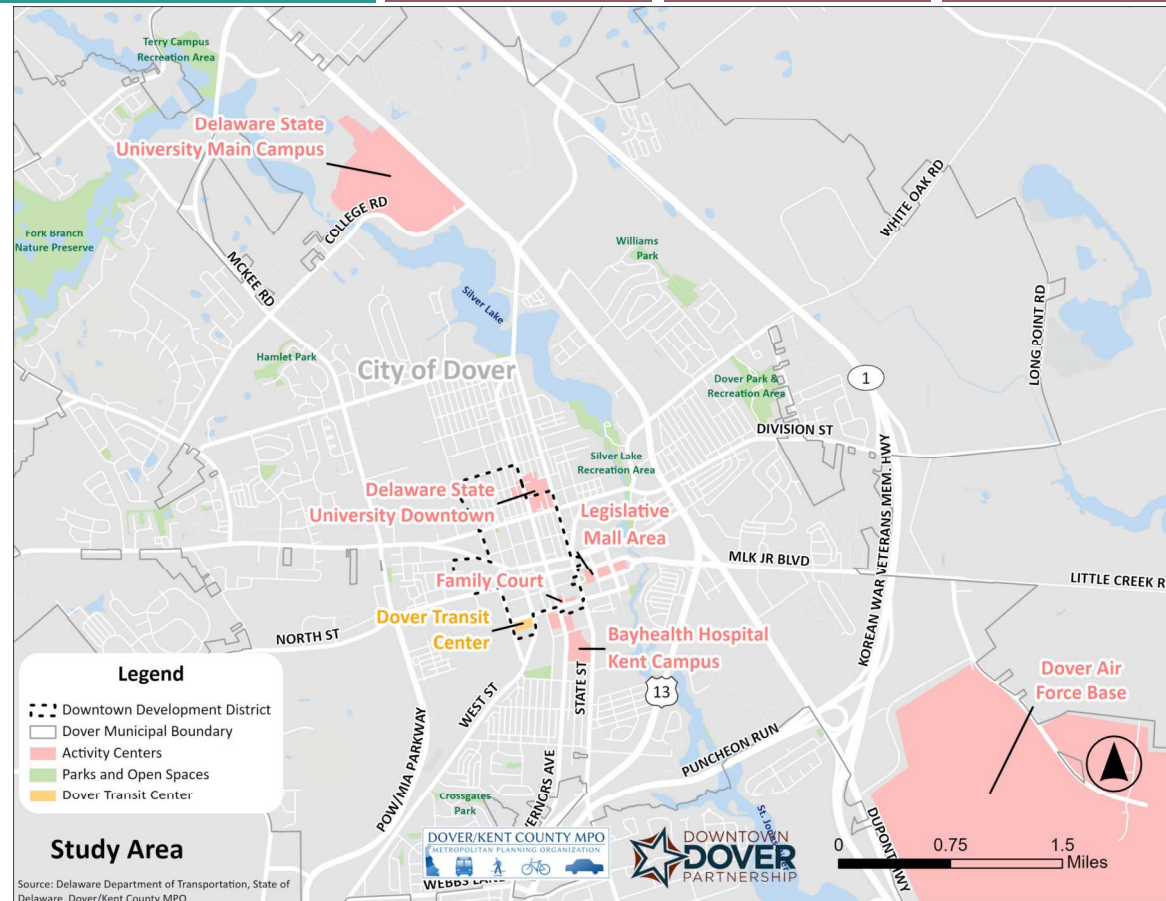


Overview

This study will identify means to better **connect key activity centers** within downtown Dover by walking, bicycling, scooter, or other **active transportation** and micromobility options.

Activity Centers:

- Delaware State University Main Campus
- Dover Air Force Base



Downtown
Dover
Pathways

Public Engagement



Downtown
Dover
Pathways

<https://maps.kittelson.com/doverpathways>

DOWNTOWN DOVER PATHWAYS

This map is seeking input to inform means to better connect key activity centers within downtown Dover by walking, bicycling, scooter, or other active transportation and micromobility options.

Legend

- Downtown Development District
- Key Activity Centers
- Pedestrian Comments
- Bicycle Comments

Utilize this comment map to identify gaps in the existing pedestrian and bicycle network as well as ideas for improvement. Please place the pedestrian and bicycle icons and leave a comment describing the existing gap or potential improvement.

Thank you for your input! We greatly appreciate your feedback.

[View a list of existing comments →](#)

Having trouble viewing or using the map? Please contact Tara Hofferth at thofferth@kittelson.com with your comments.

The map displays downtown Dover with a black outline for the Downtown Development District and red outlines for key activity centers. Various landmarks are labeled, including Kent County Secondary ILC, Wesley College / DSU, Johnson Victrola Museum, Biggs Museum of American Art, and Bayhealth Hospital, Kent Campus. Pedestrian and bicycle icons are placed on the map to indicate comment locations. The map interface includes a legend, instructions, and layers panel.

INSTRUCTIONS

Use the map to zoom in on specific areas of downtown Dover.

Leave a comment by double clicking on the map and following the comment instructions.

Please note that the name, email, and phone number is optional and not required.

LAYERS

Click any of the layer titles below to toggle them off the map.

- Downtown Development District
- Activity Centers

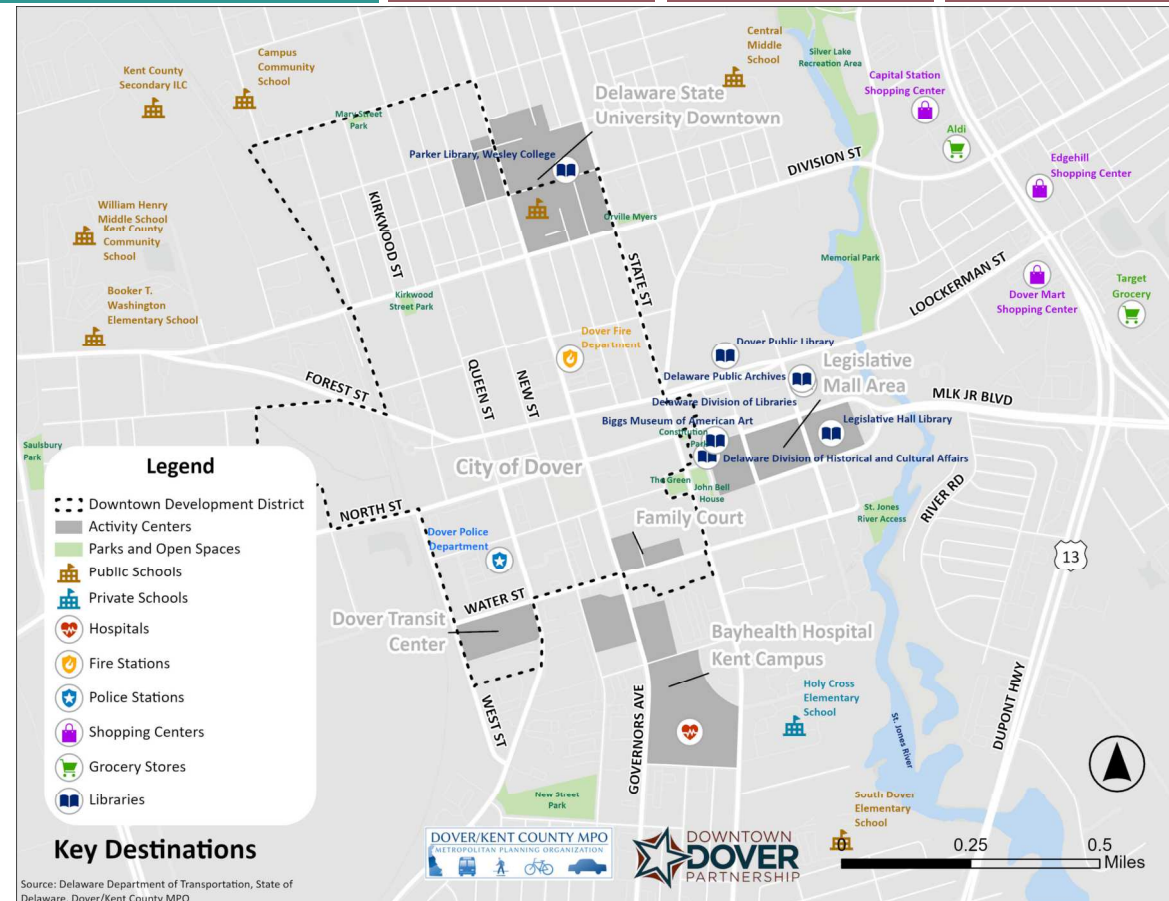
Demographics & Land Use



Key Places

Key Takeaways:

- Several public schools are located northwest of downtown
- Several shopping centers located at east end of Loockerman Street
- Fire station on Governors Avenue



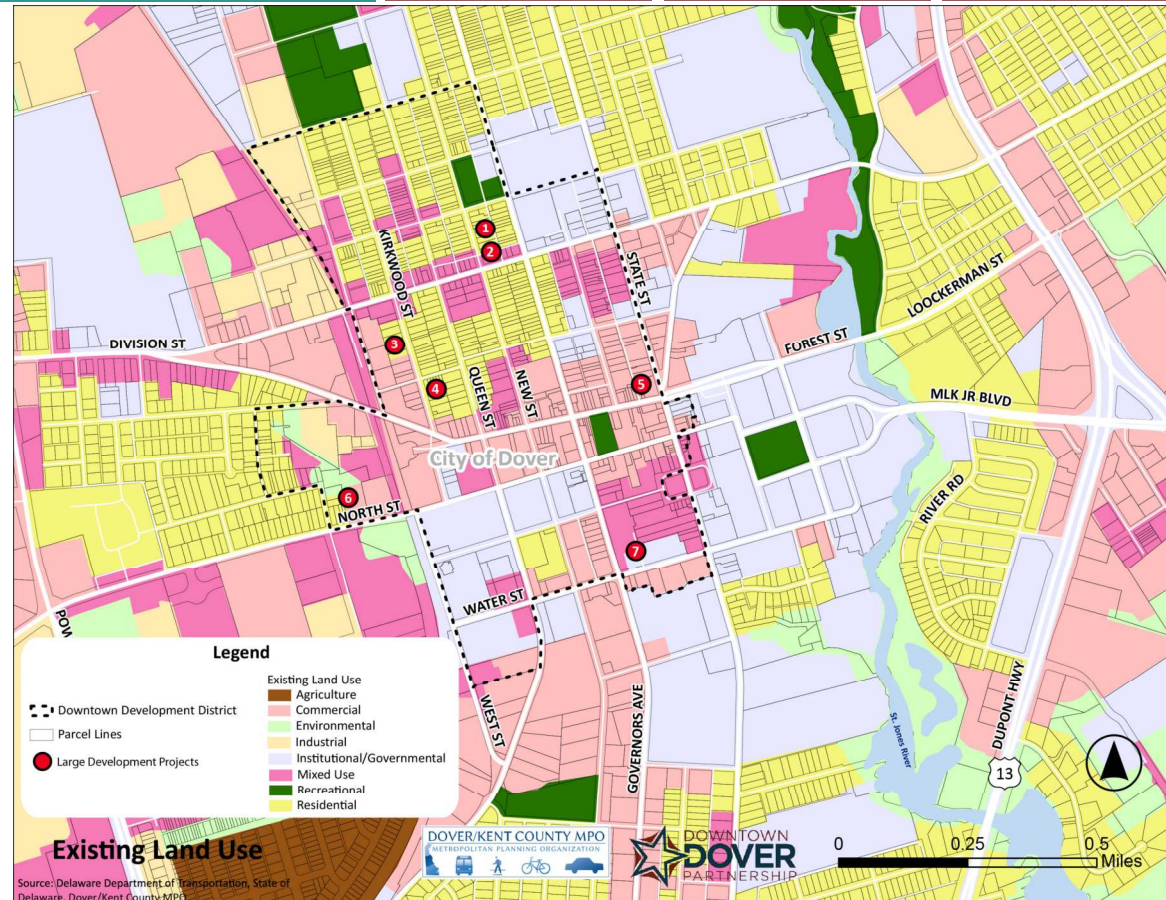
Downtown
Dover
Pathways

Land Use & Development

Downtown
Dover
Pathways

Land Use Patterns:

- Significant institutional / government land use around downtown
- Residential land use north and west of downtown
- Loockerman Street, North Street, and State Street are the commercial cores of downtown
- Ongoing large development projects are primarily located north of Loockerman Street



Job Density

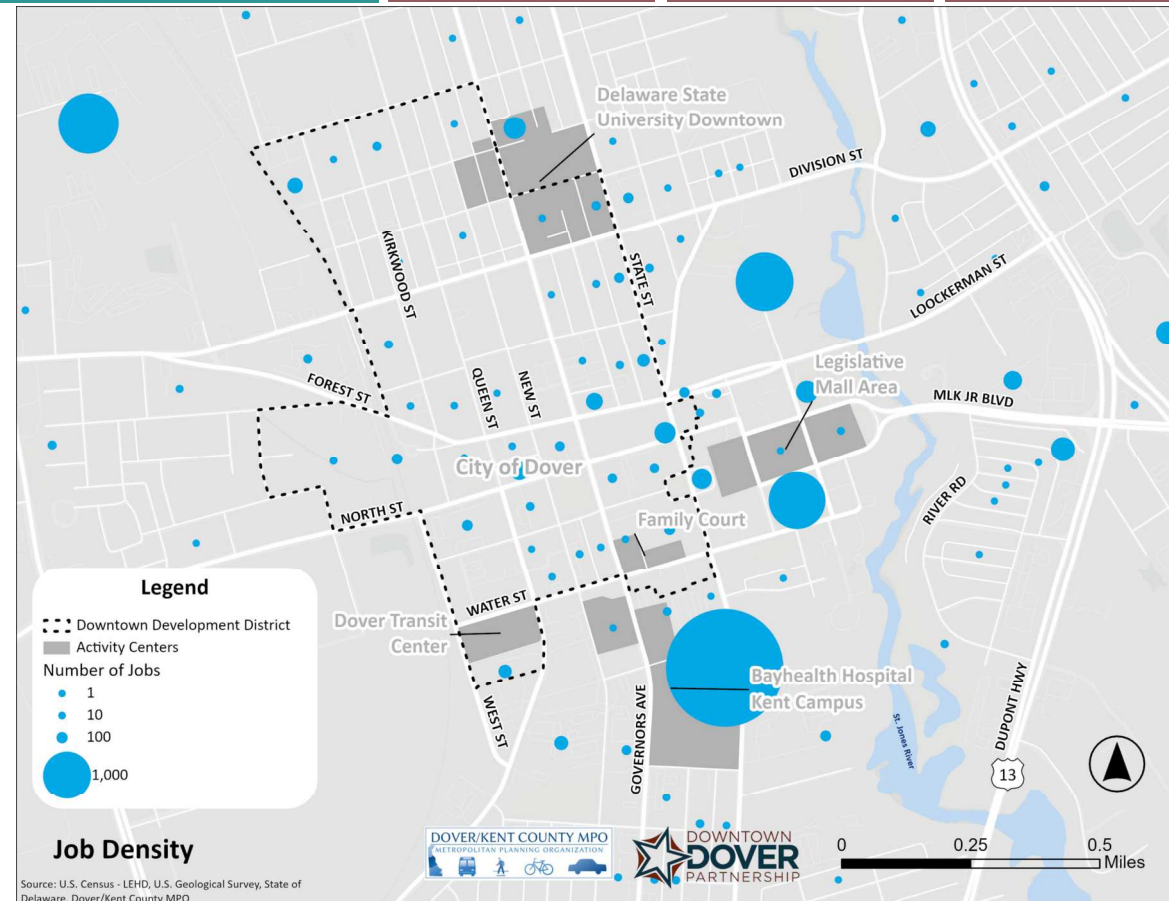
Downtown
Dover
Pathways

Key Takeaways:

- Greatest job density at Bayhealth and legislative offices
- Some job density in the Downtown core around Loockerman Street, State Street, and North Street
- Job density northwest of Downtown

Transforming Downtown Dover Plan:

- “Prevailing employment sectors are healthcare, retail, and education.”
- Fewer Downtown Dover area residents work for public administration

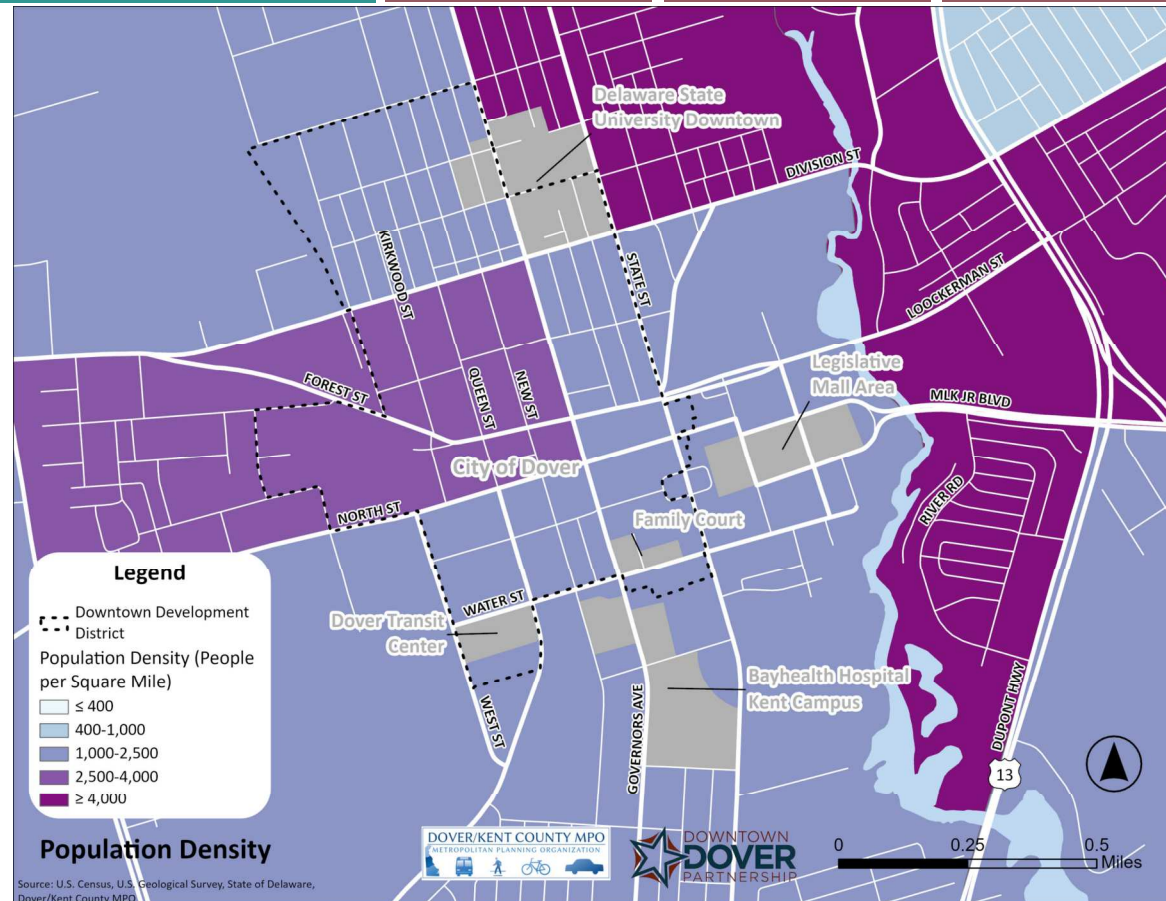


Population Density

Downtown
Dover
Pathways

Key Takeaways:

- Denser population east and northeast of Downtown
- Population density west of Governors Avenue and north of North Street



Infrastructure

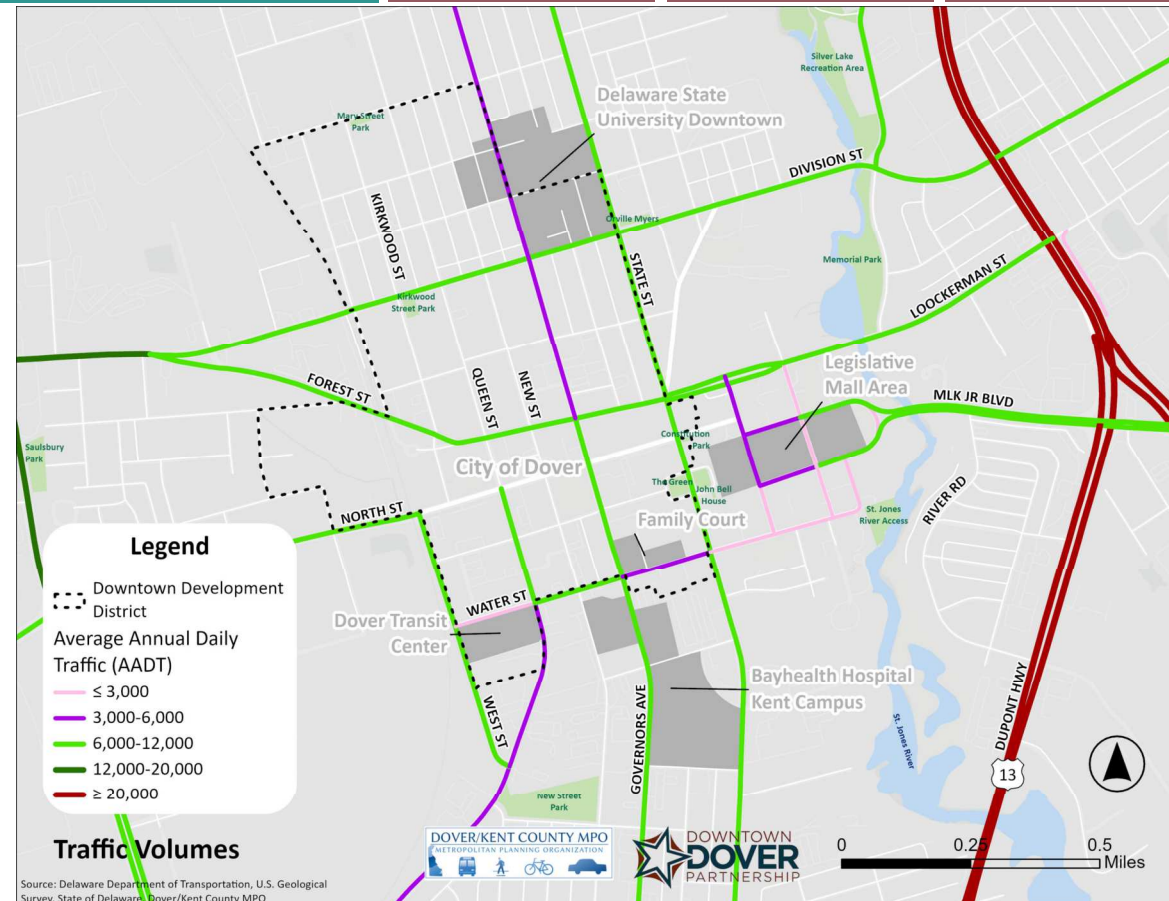


Traffic Volumes

Downtown
Dover
Pathways

Traffic Carriers Through Downtown:

- Division Street
- Loockerman Street / Forest Street
- North Street
- MLK Jr Boulevard
- Water Street (portions)
- State Street
- Governors Avenue (south of Loockerman Street)
- Queen Street (south of North Street)
- West Street

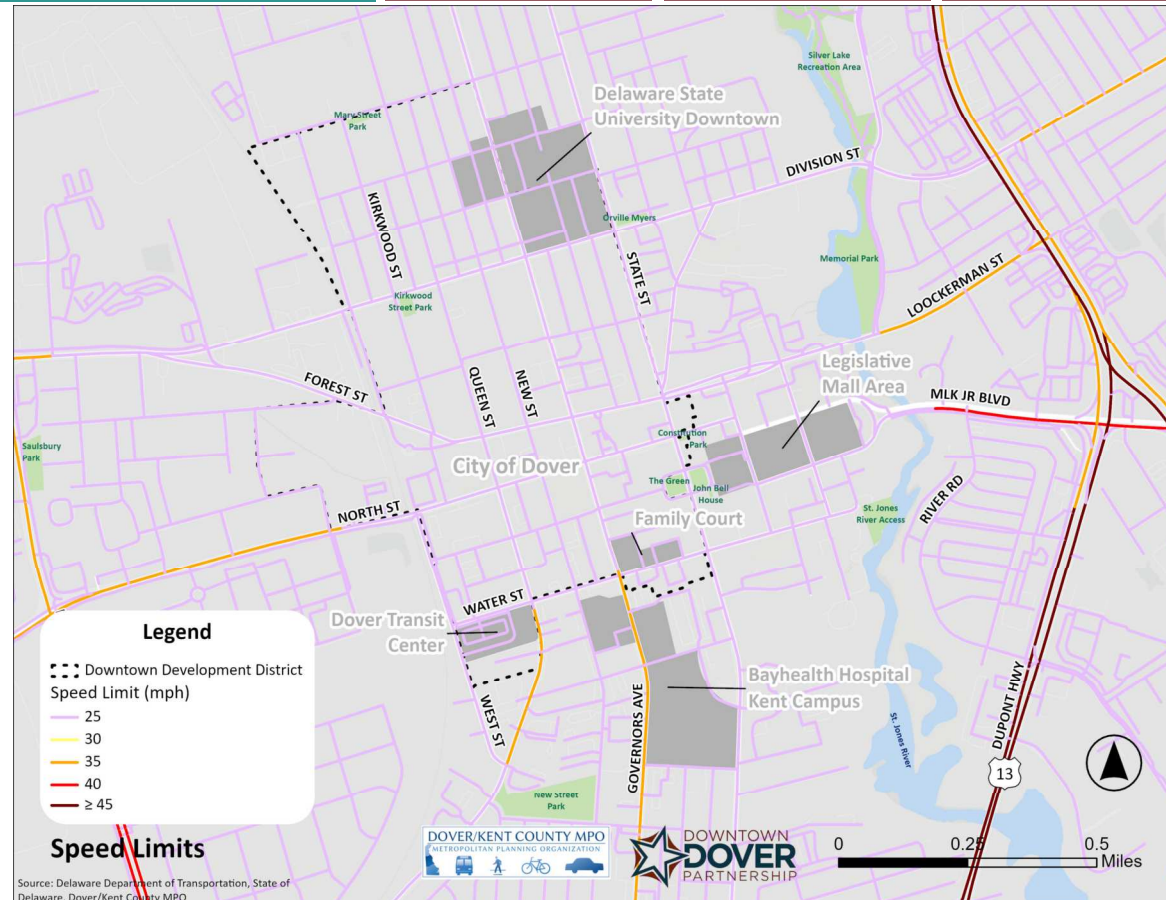


Speed Limit

Downtown
Dover
Pathways

Key Takeaways:

- Downtown streets have a 25-mph speed limit
- Some speed limits increase outside of Downtown (North Street, Queen Street, Loockerman Street, and Governors Avenue)



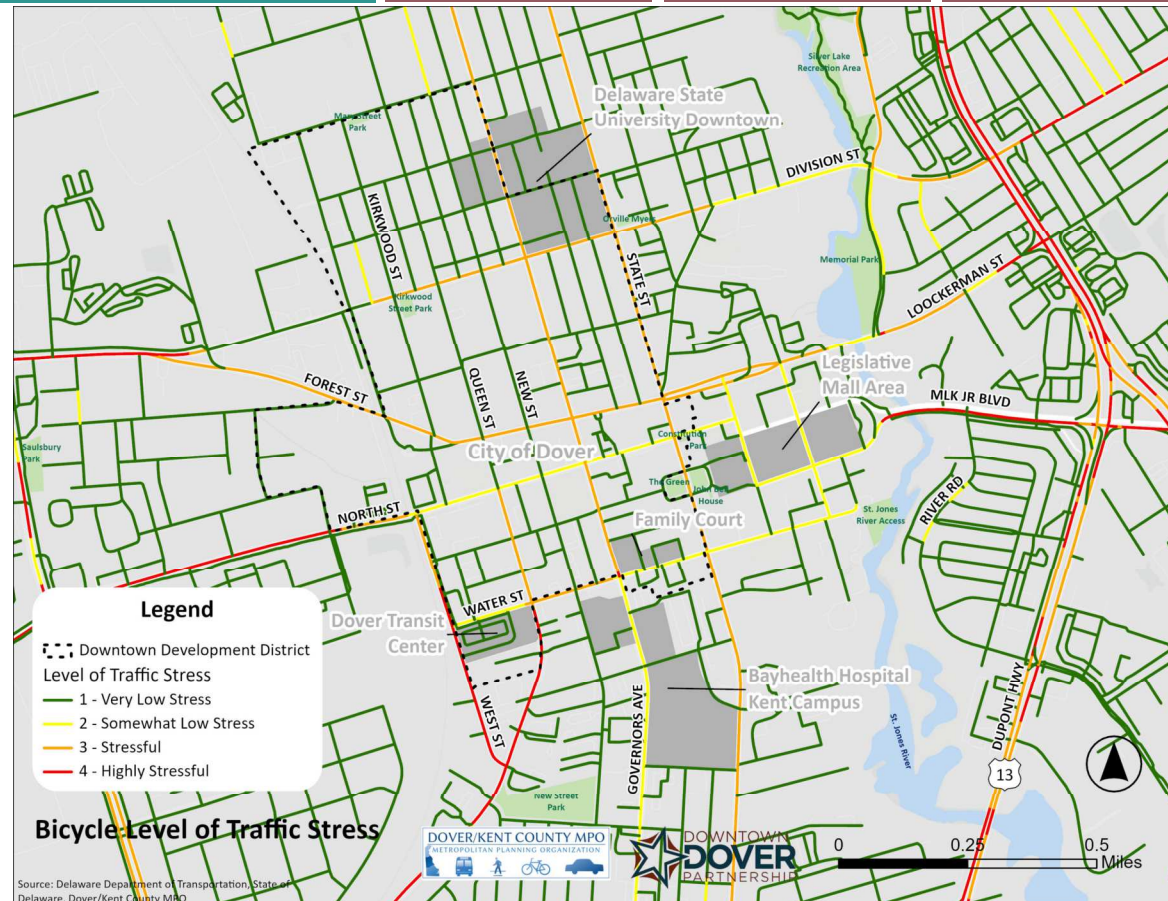
Source: Delaware Department of Transportation, State of Delaware, Dover/Kent County MPO

Bicycle Level of Traffic Stress

Downtown
Dover
Pathways

Stressful Bicycle Routes Through Downtown:

- Division Street
- Lookerman Street / Forest Street
- North Street
- MLK Jr Boulevard
- Water Street
- State Street
- Governors Avenue
- Queen Street (south of North Street)
- West Street

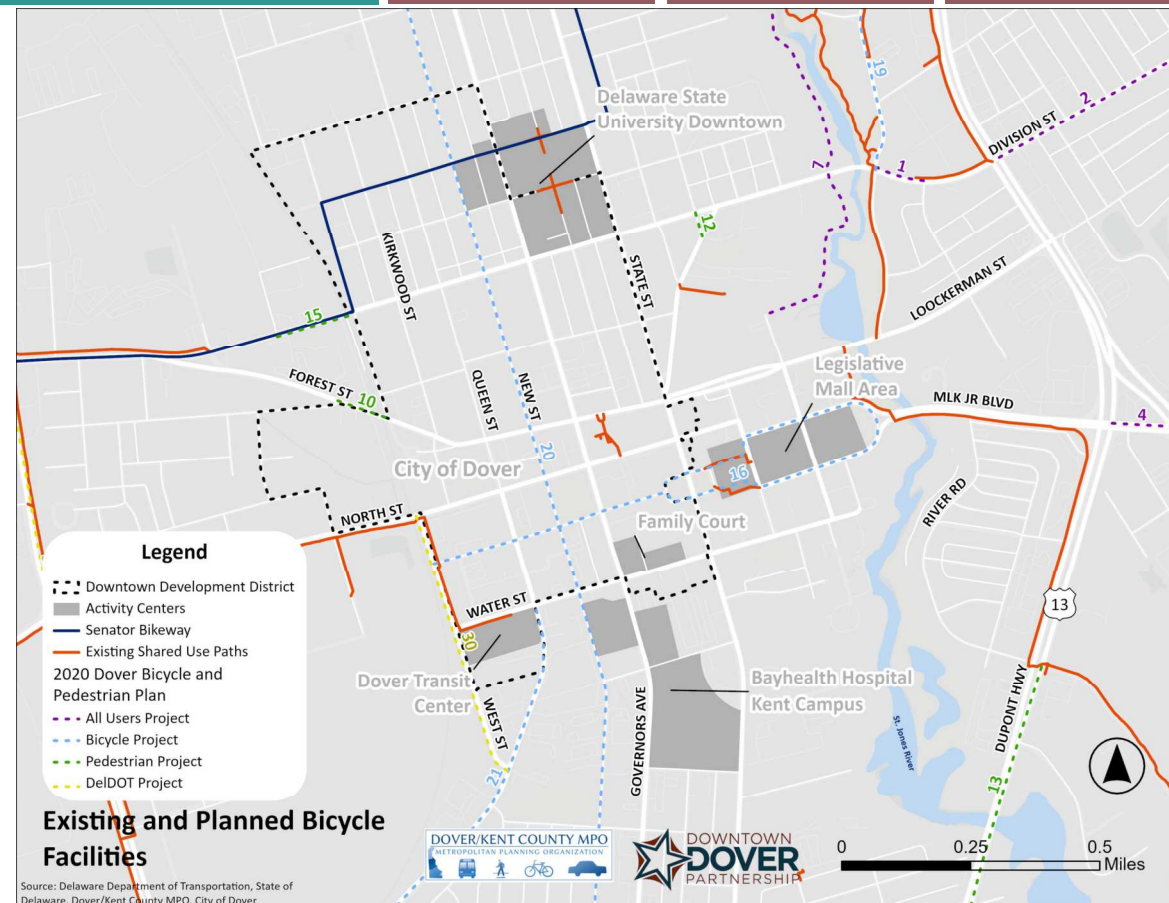


Bicycle Infrastructure

Downtown
Dover
Pathways

Key Bicycle Routes:

- Senator Bikeway: East-west bike route through the heart of Dover. Protected two-way cycle track along portions of Division Street.
- Shared use path along south side of North Street
- Shared use path along MLK Jr Blvd east of St. Jones River provides bicycle connection into Downtown
- Bicycle infrastructure gaps in and around downtown

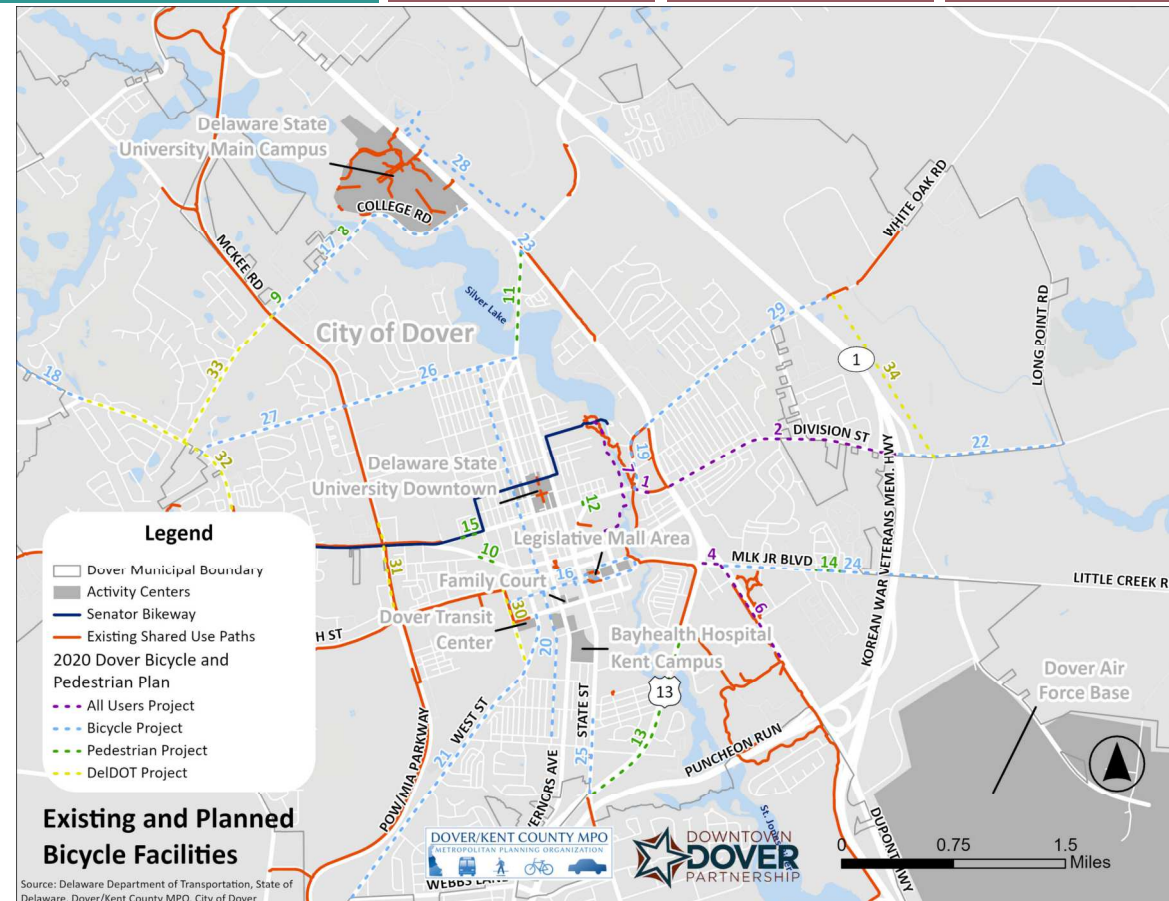


Bicycle Infrastructure

Downtown
Dover
Pathways

Key Bicycle Routes:

- Planned facilities along McKee Road, Dupont Highway, and other routes

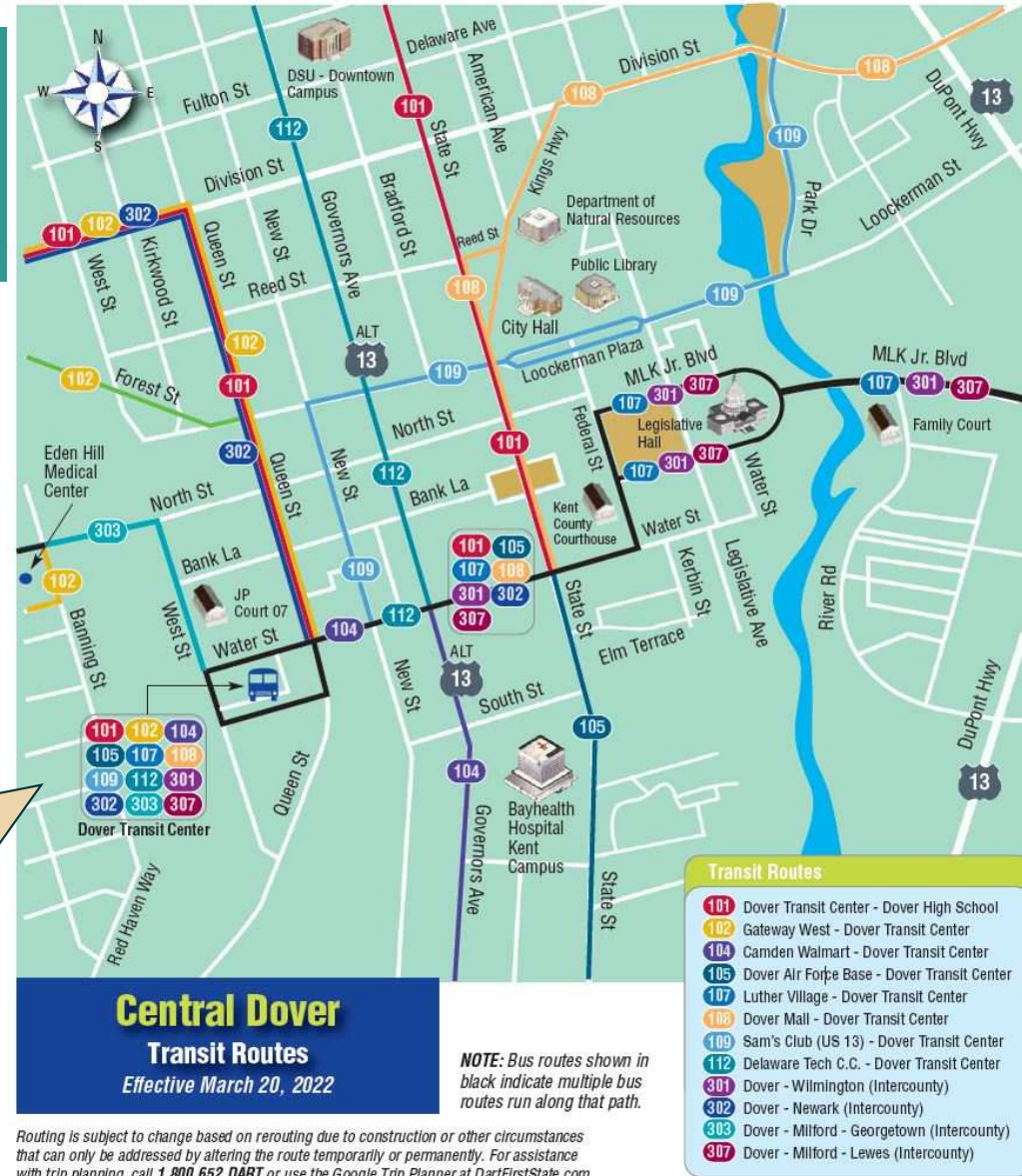


Transit Infrastructure

Key Streets for Bus Routes & Stops:

- State Street
- Governors Avenue
- Part of New Street
- Queen Street
- Lookerman Street
- Parts of Division Street
- North Street
- Water Street
- MLK Jr Boulevard

These routes may change due to DART Reimagined



Safety



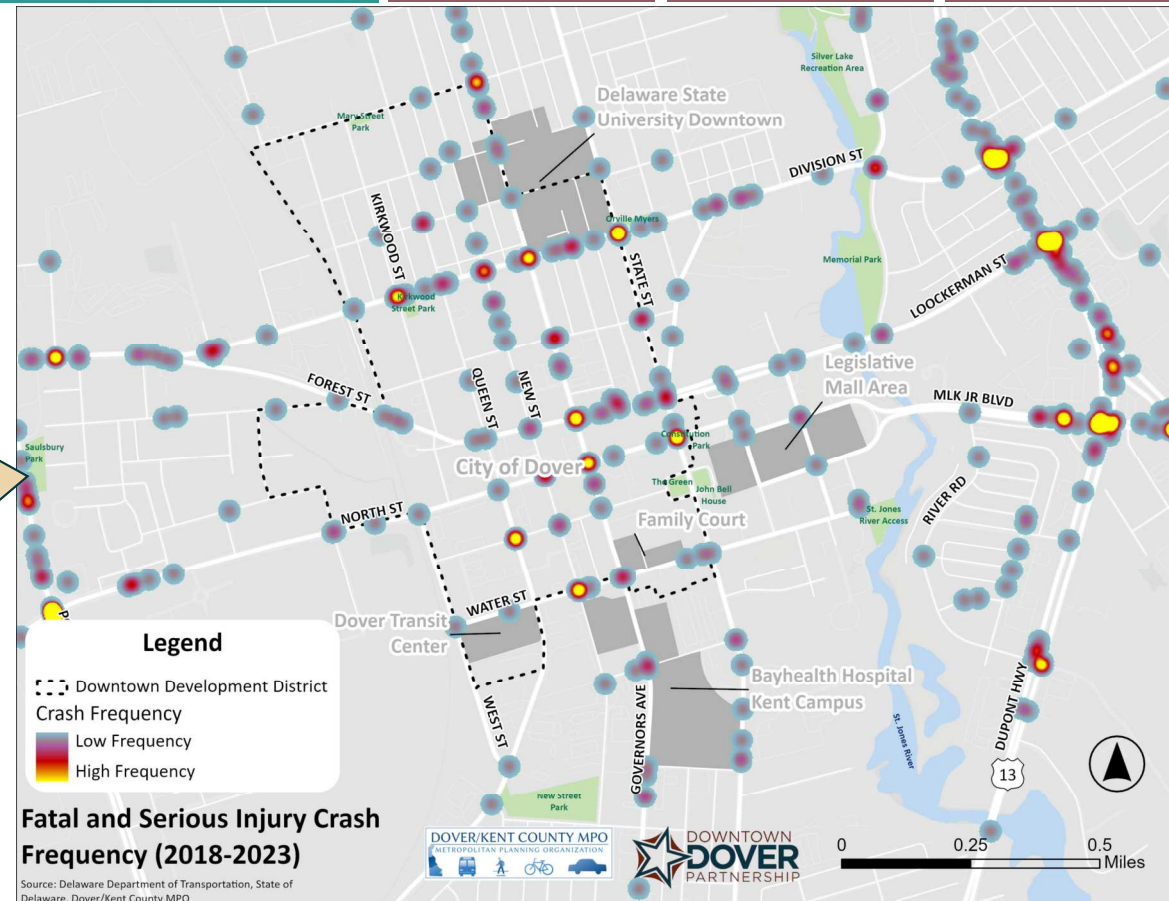
Fatal & Serious Injury Crashes (2013-2023)

Downtown
Dover
Pathways

Streets with more crash severity:

- Dupont Highway
- Division Street
- Reed Street
- Lookerman Street
- North Street
- Bank Lane
- Water Street
- State Street
- Governors Avenue
- New Street
- Queen Street
- West Street

Severe crashes
are concentrated
at intersections



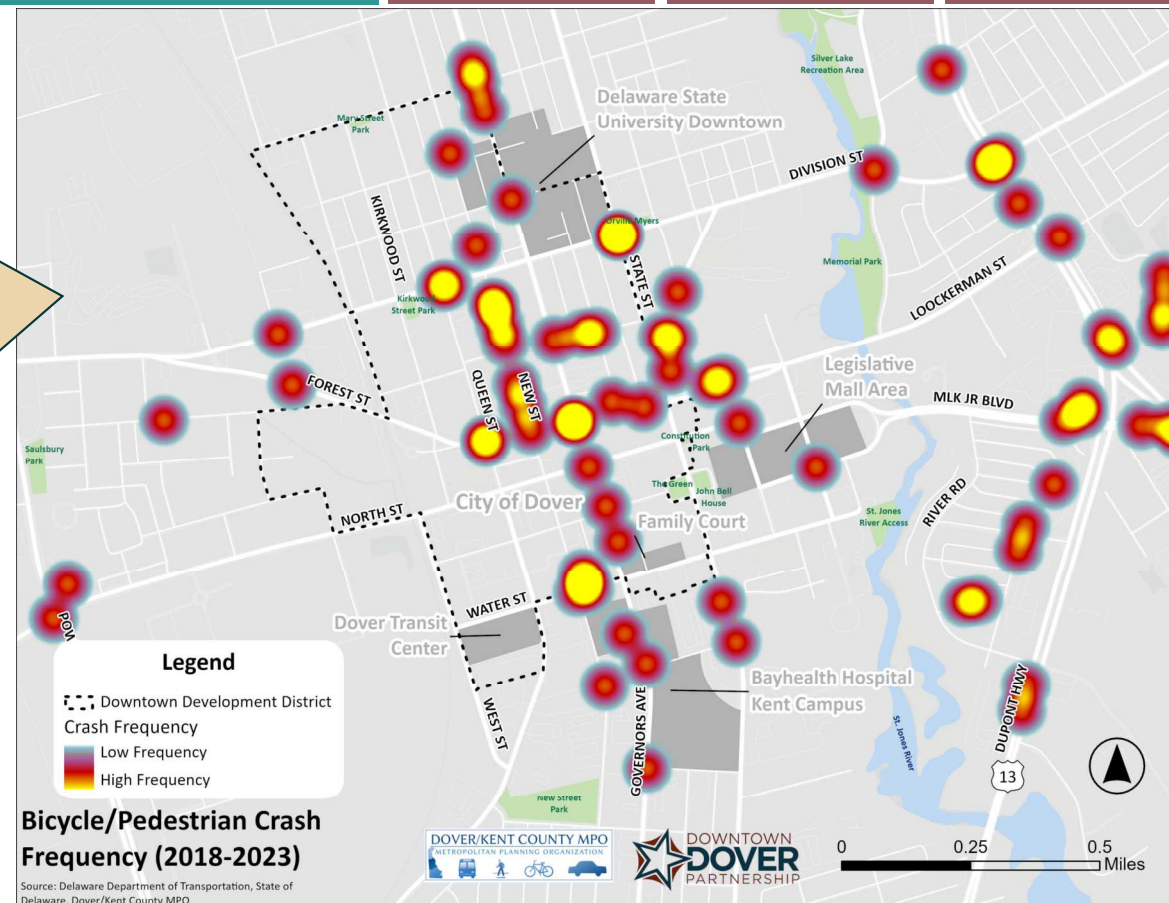
Bicyclist & Pedestrian Crashes (2013-2023)

Downtown
Dover
Pathways

Streets with more bicyclist & pedestrian crashes:

- Division Street
- Reed Street
- Lookerman Street
- Water Street
- State Street
- Governors Avenue
- New Street
- Queen Street
- Dupont Highway

Bicycle / pedestrian crashes are concentrated on the north-south streets



Bicyclist & Pedestrian Crashes (2013-2023)

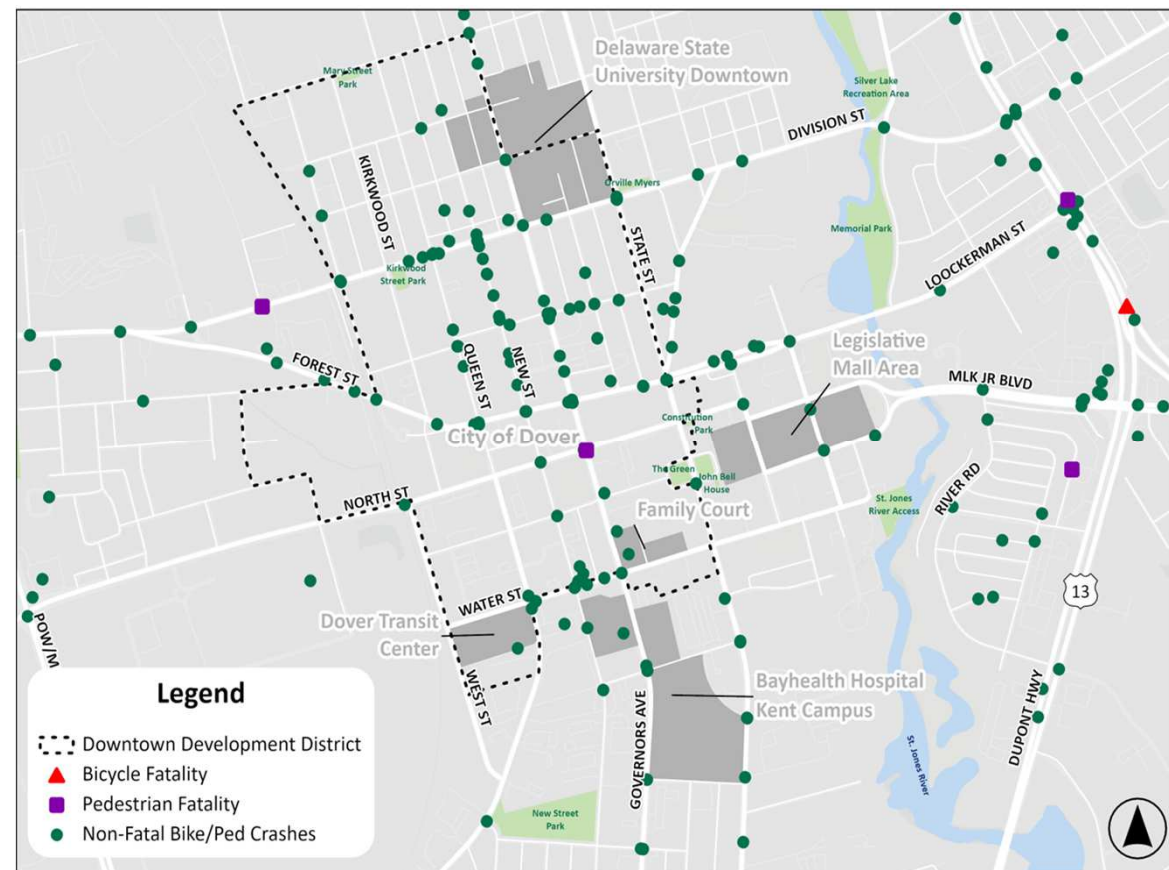
Downtown
Dover
Pathways

Key Takeaways:

- Concentration of crashes on New Street between Lookerman Street and Division Street
- Concentration of crashes north of North Street

Fatalities:

- At intersection of North Street and Governor's Avenue
- Along Division Street

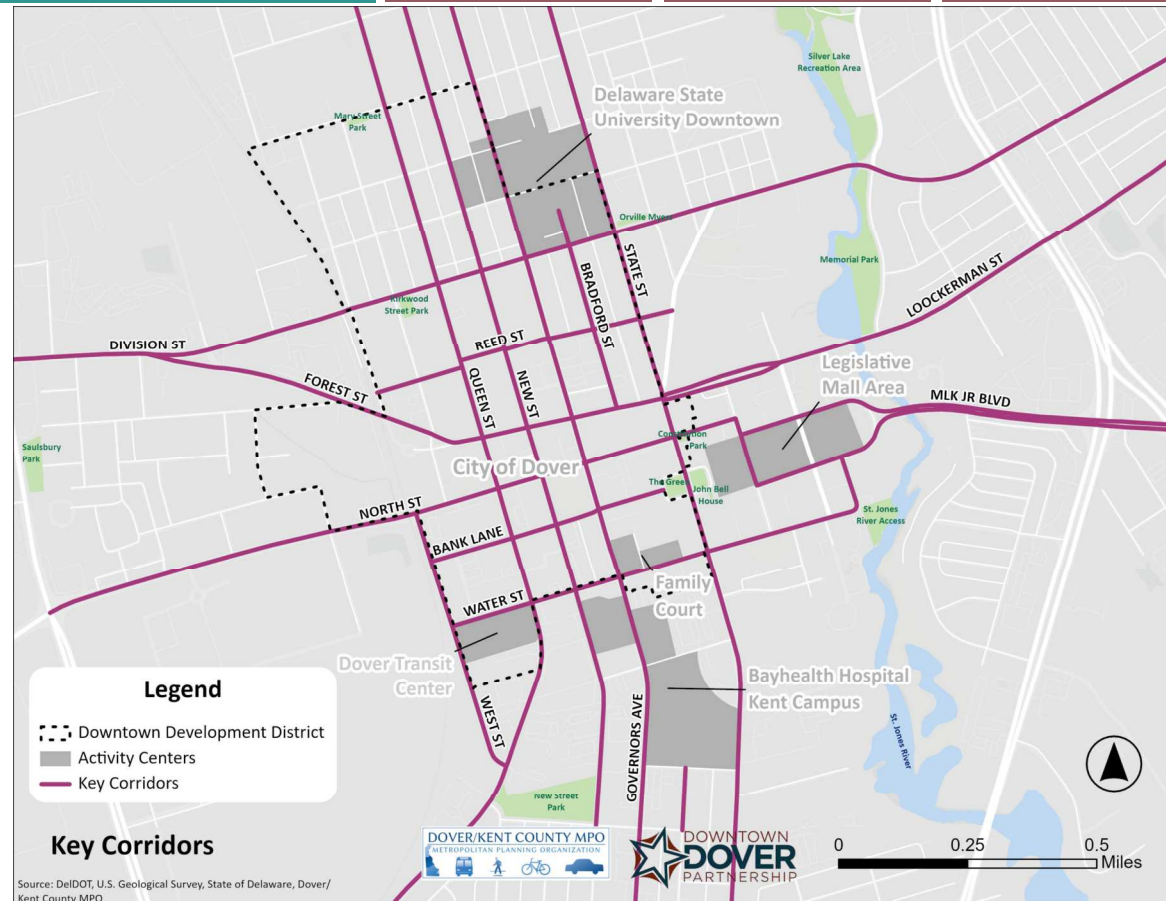


Summary



Key Corridors

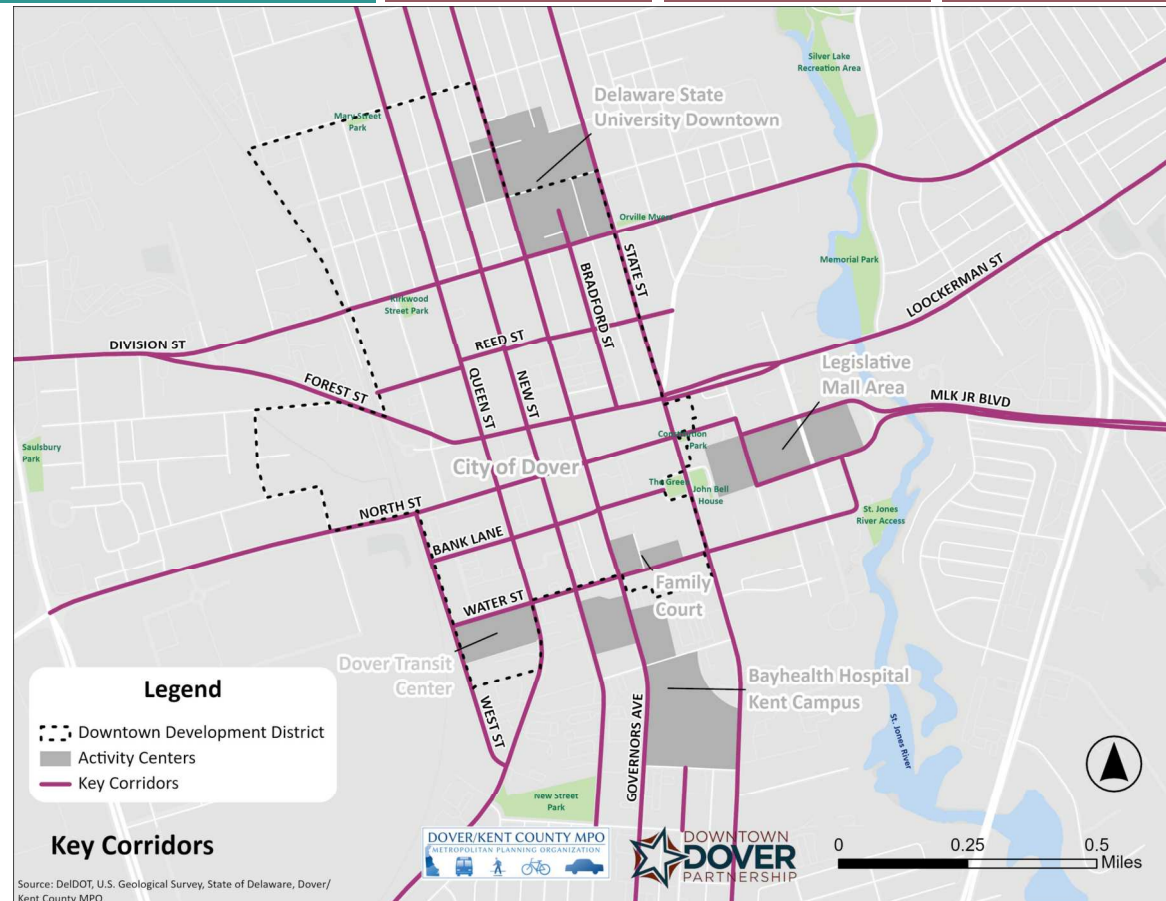
- Division Street
- Reed Street
- Loockerman Street / Forest Street
- North Street
- MLK Jr Boulevard
- Bank Lane
- Water Street
- State Street
- Bradford Street
- Governors Avenue
- New Street
- Queen Street
- West Street



Downtown
Dover
Pathways

Key Needs

- Provide north-south multimodal connectivity
- Improve Downtown intersection safety
- Designate priority transportation modes along Downtown streets
- Slow traffic in Downtown



Downtown
Dover
Pathways

How should we
measure success?



Potential Performance Measures

Downtown
Dover
Pathways

- Continuous paths
- Low stress bicycle routes
- Pedestrian comfort
- Improved crossings
- Eliminate crashes
- Access to transit
- Support Downtown businesses
- Implement projects

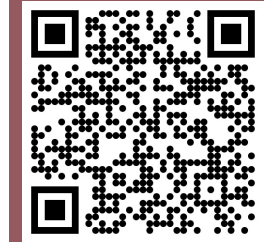
Overall Goal: Create continuous, accessible north-south and east-west bicycle facilities through Downtown Dover and fill gaps in the pedestrian network.



Next Steps



Next Steps



Downtown
Dover
Pathways

- Finalize Existing Conditions
- Finalize Purpose & Need
- Finalize Performance Measures
- Develop & Analyze Alternatives



Malcolm Jacob
(Malcolm.Jacob@doverkentmpo.org)



Tara Hofferth
(thofferth@kittelson.com)