

Downtown Dover Pathways

TAC Presentation
Tuesday, June 18, 2024



Agenda

- Study Overview
- Recommendations
- Loockerman Street
- Implementation
- Next Steps



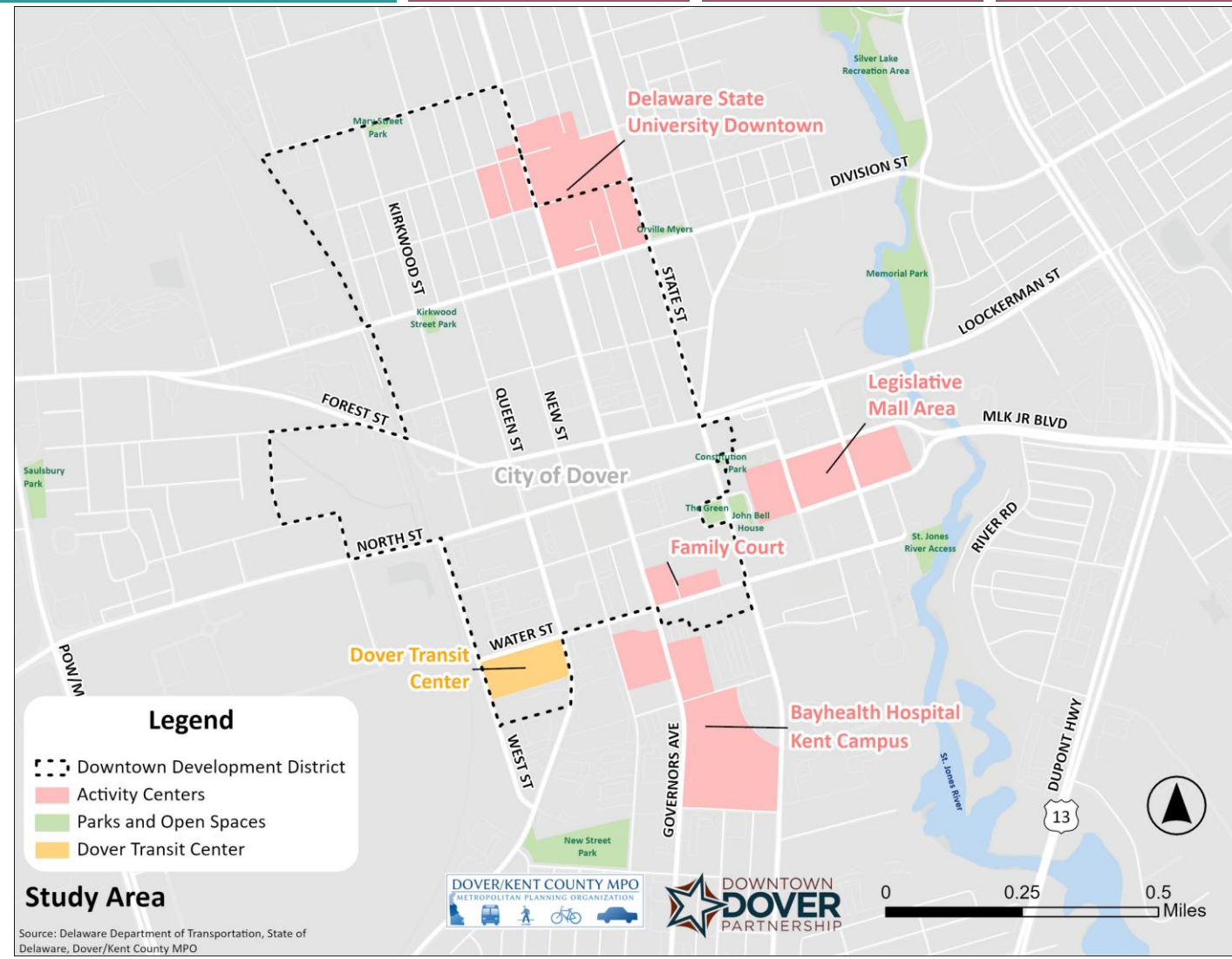
Overview

Downtown
Dover
Pathways

This study has identified means to better **connect key activity centers** within downtown Dover by walking, bicycling, scooter, or other **active transportation** and micromobility options.

Activity Centers:

- Bayhealth Hospital Campus
- New Family Court Building
- Legislative Mall Area
- Delaware State University Downtown
- Dover Transit Center

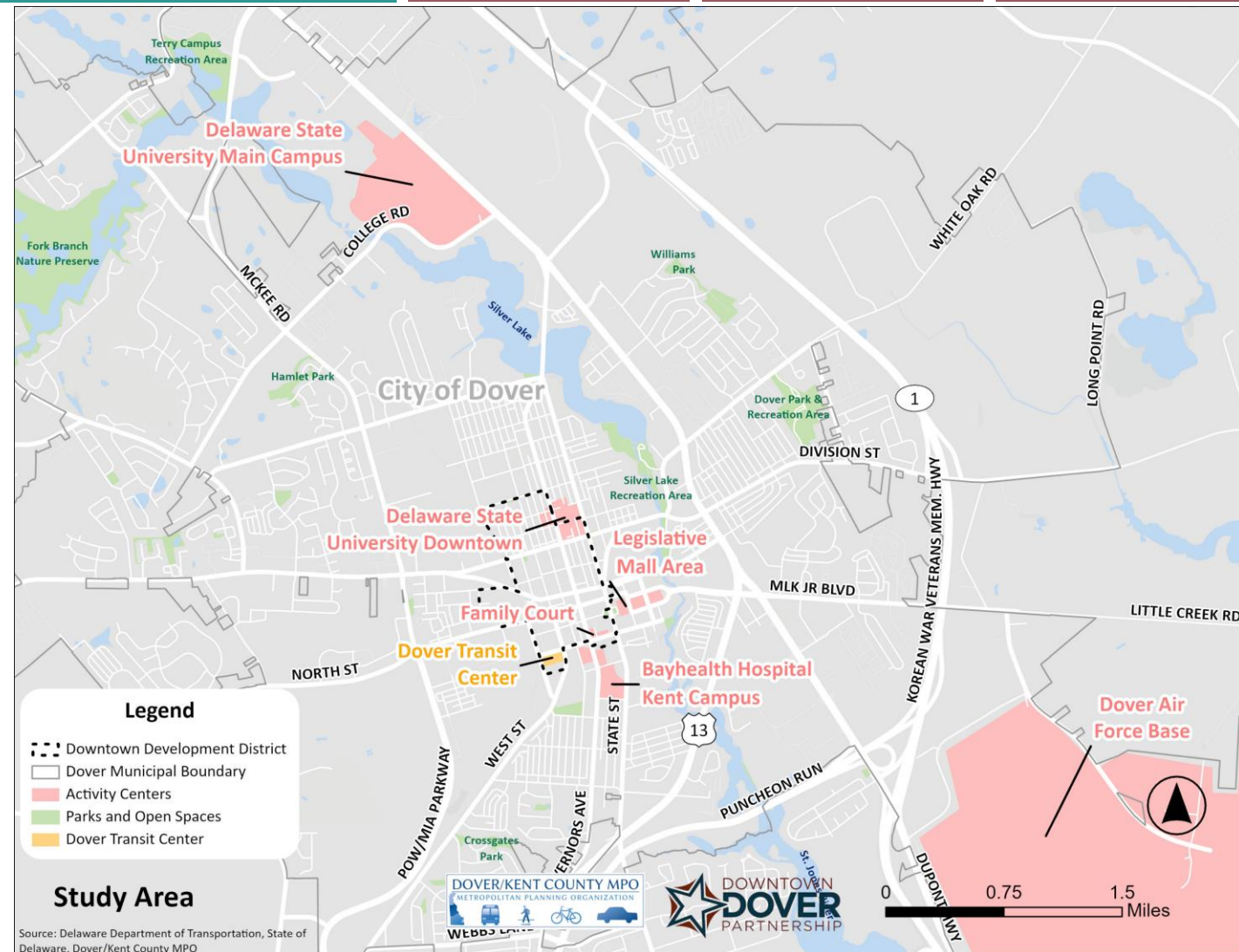


Overview

This study has identified means to better **connect key activity centers** within downtown Dover by walking, bicycling, scooter, or other **active transportation** and micromobility options.

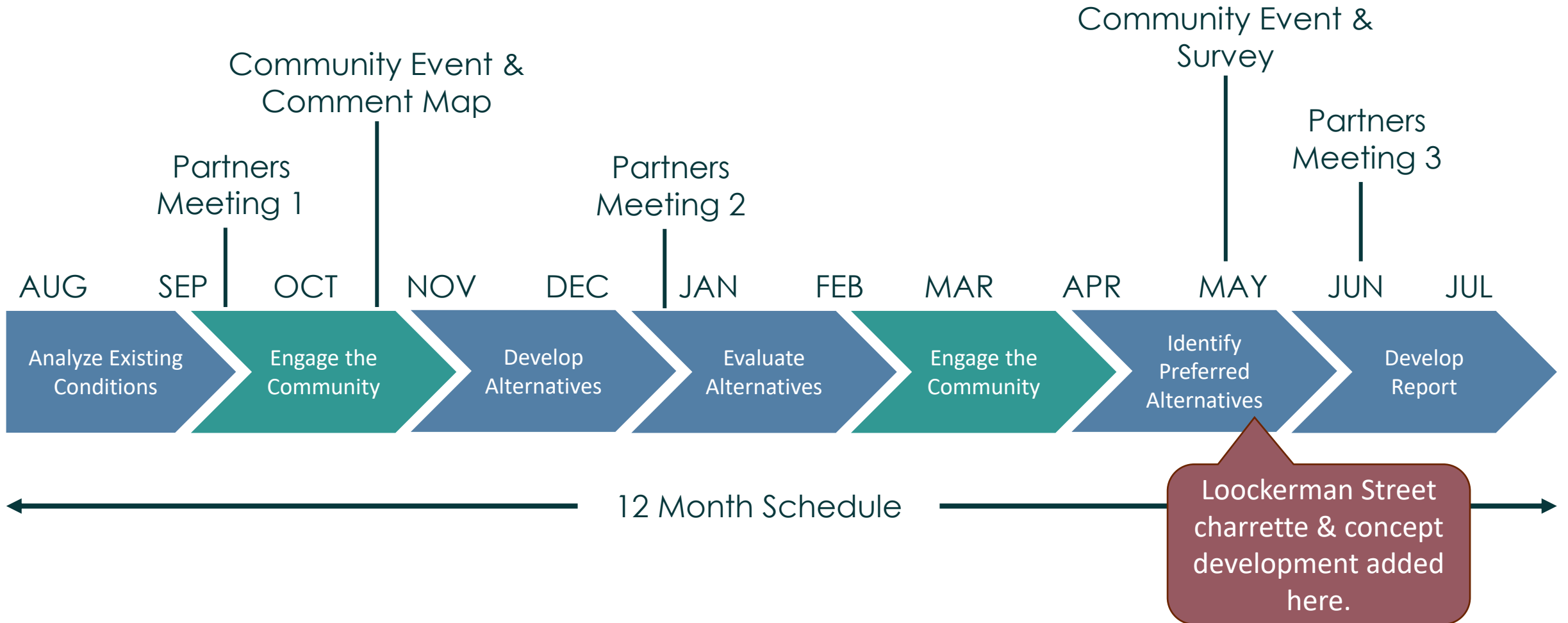
Activity Centers:

- Delaware State University Main Campus
- Dover Air Force Base



Schedule

Downtown
Dover
Pathways



Engagement Strategy

Downtown
Dover
Pathways

Key Strategies:

- Workshops with partners
- Public events
- Pop ups in the community
- Online surveying
- Targeted meetings



Engagement Takeaways

Downtown
Dover
Pathways

Key Takeaways:

- Sidewalk accessibility and condition
- Some bike facilities are high stress
- Vehicle speeds exceed speed limits
- Some intersections are difficult to cross
- Continuous walking/bicycling routes
- Division Street is a barrier
- Consider emergency routes



Key Objectives

Downtown
Dover
Pathways



Create a continuous, low stress bicycle network.



Fill sidewalk and crosswalk gaps to improve pedestrian comfort.



Reduce vehicular speeds and eliminate pedestrian and bicyclist crashes.



Connect activity centers and spur economic development.



Identify fundable projects and establish a framework for implementation.

Recommendations



Project Categories

Downtown
Dover
Pathways

1. Improve Pedestrian Facilities

2. Improve Bicycle Facilities

3. Reimagine Lookerman Plaza

4. Improve the Capital City Trail

5. Connect DSU Campuses

6. Adopt Policies & Implement Programs

7. Pilot Micromobility

8. Redesign Lookerman Street

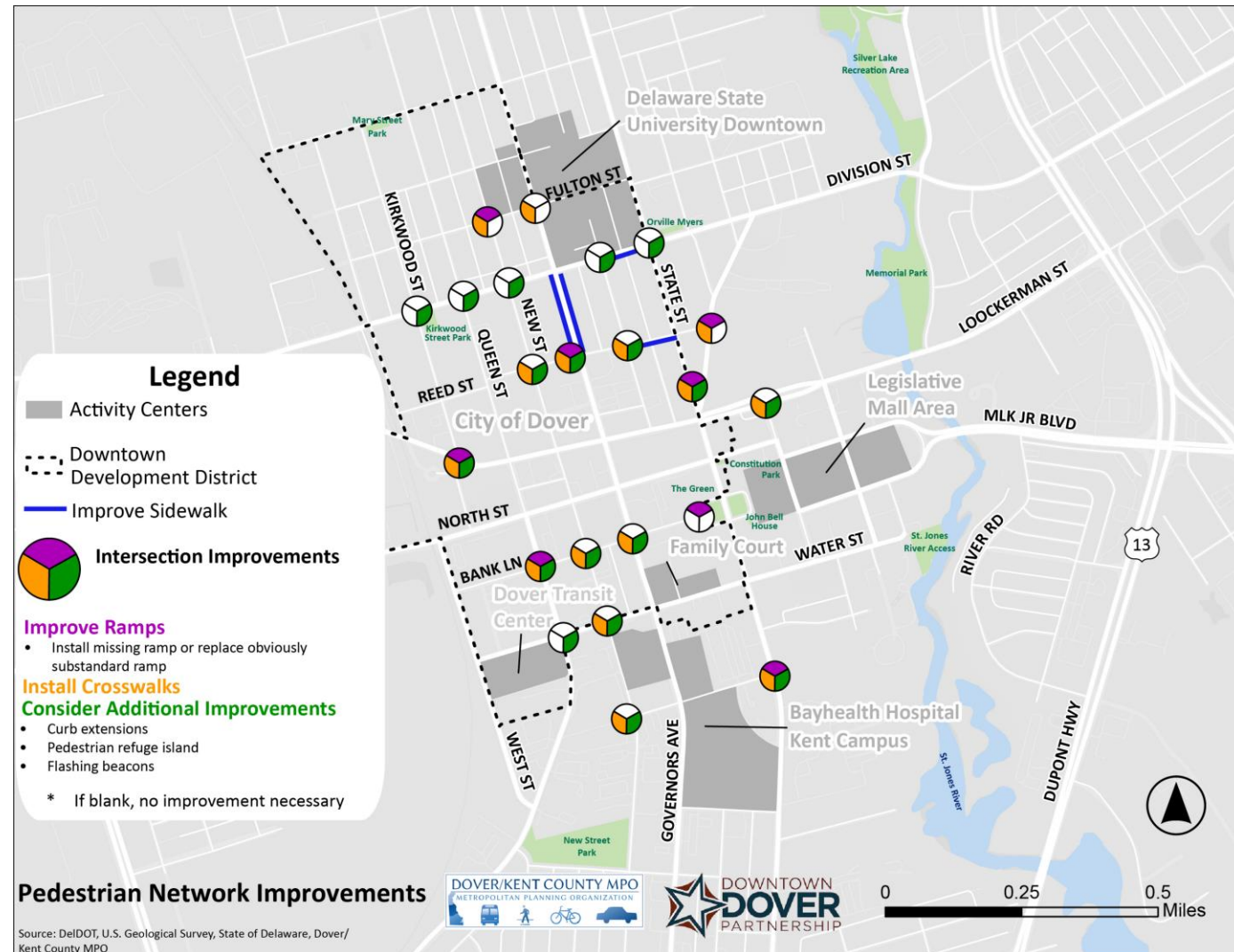
1. Improve Pedestrian Facilities

Downtown
Dover
Pathways

Downtown intersection improvement project:

- Install accessible ramps
- Install marked crosswalks
- Install daylighting and painted curb extensions

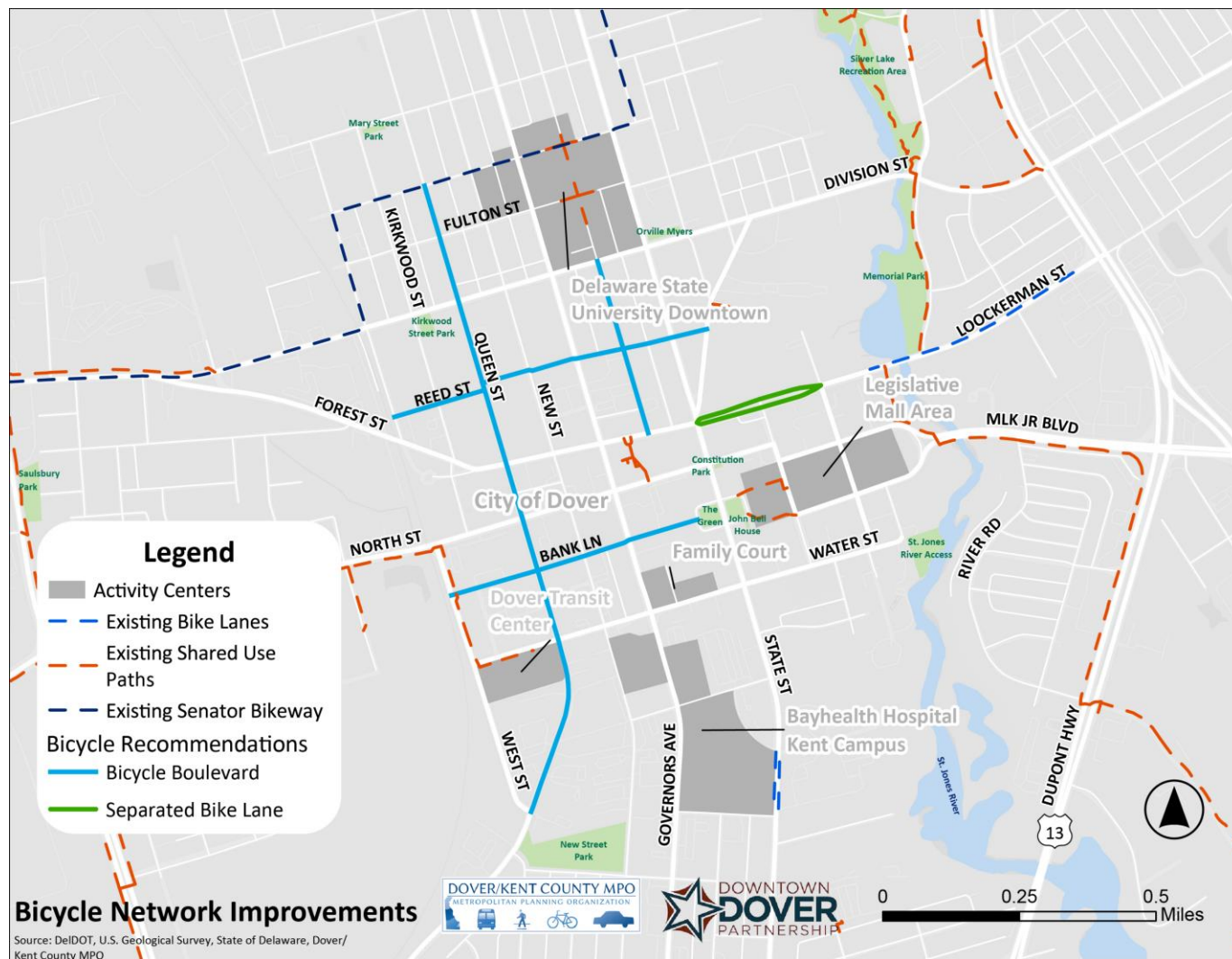
Larger intersection improvements along Division Street, Water Street, and South Street



2. Improve Bicycle Facilities

Downtown
Dover
Pathways

- Install bicycle boulevards on:
 - Reed Street
 - Bank Lane
 - Bradford Street
 - Queen Street

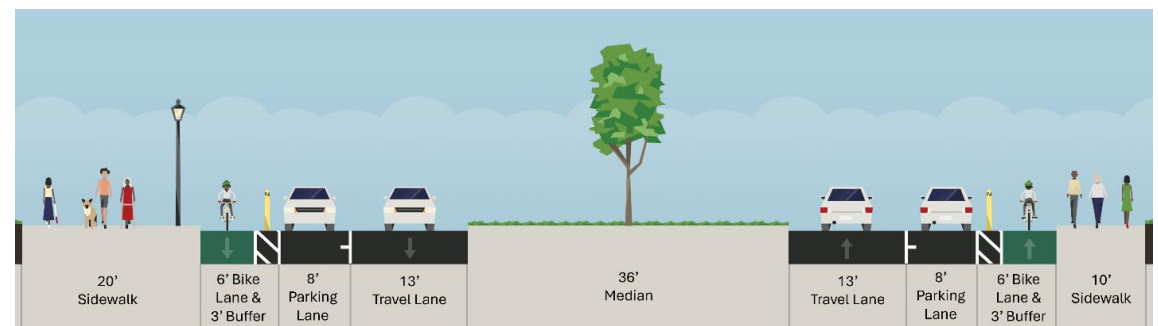
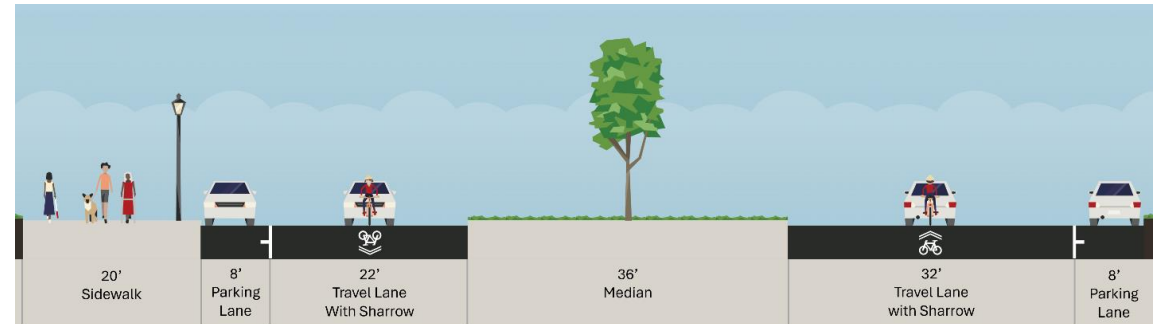


3. Reimagine Lookerman Plaza

Downtown
Dover
Pathways

Shorter-term project:

1. Implement bicycle lanes along Lookerman Plaza
2. Fill sidewalk gap
3. Add crosswalk at Federal Street



3. Reimagine Lookerman Plaza

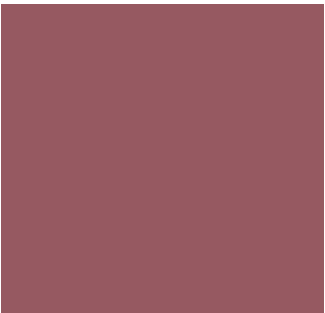
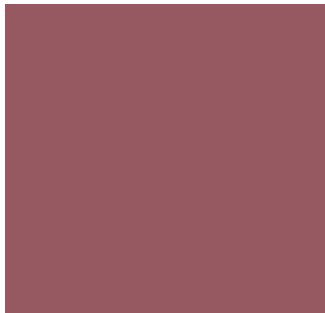
Downtown
Dover
Pathways

Long-term project:

- Convert Lookerman Plaza to a festival street



4. Improve the Capital City Trail

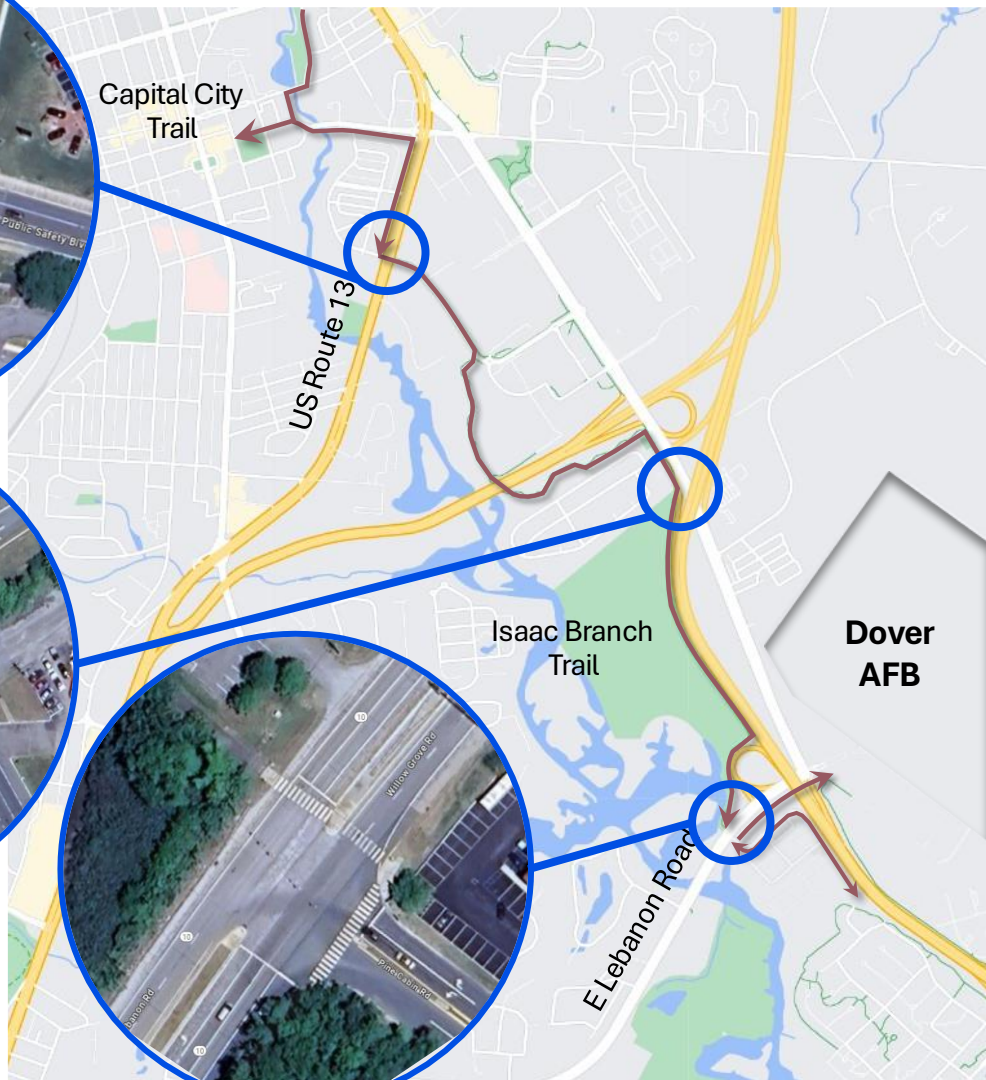
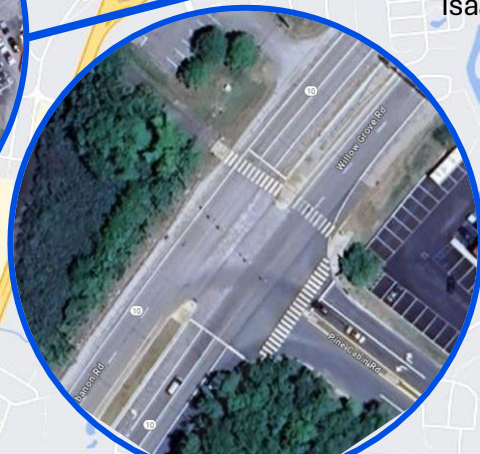


Downtown
Dover
Pathways

Improve lighting, wayfinding, amenities, art, resting stations

Improve intersections:

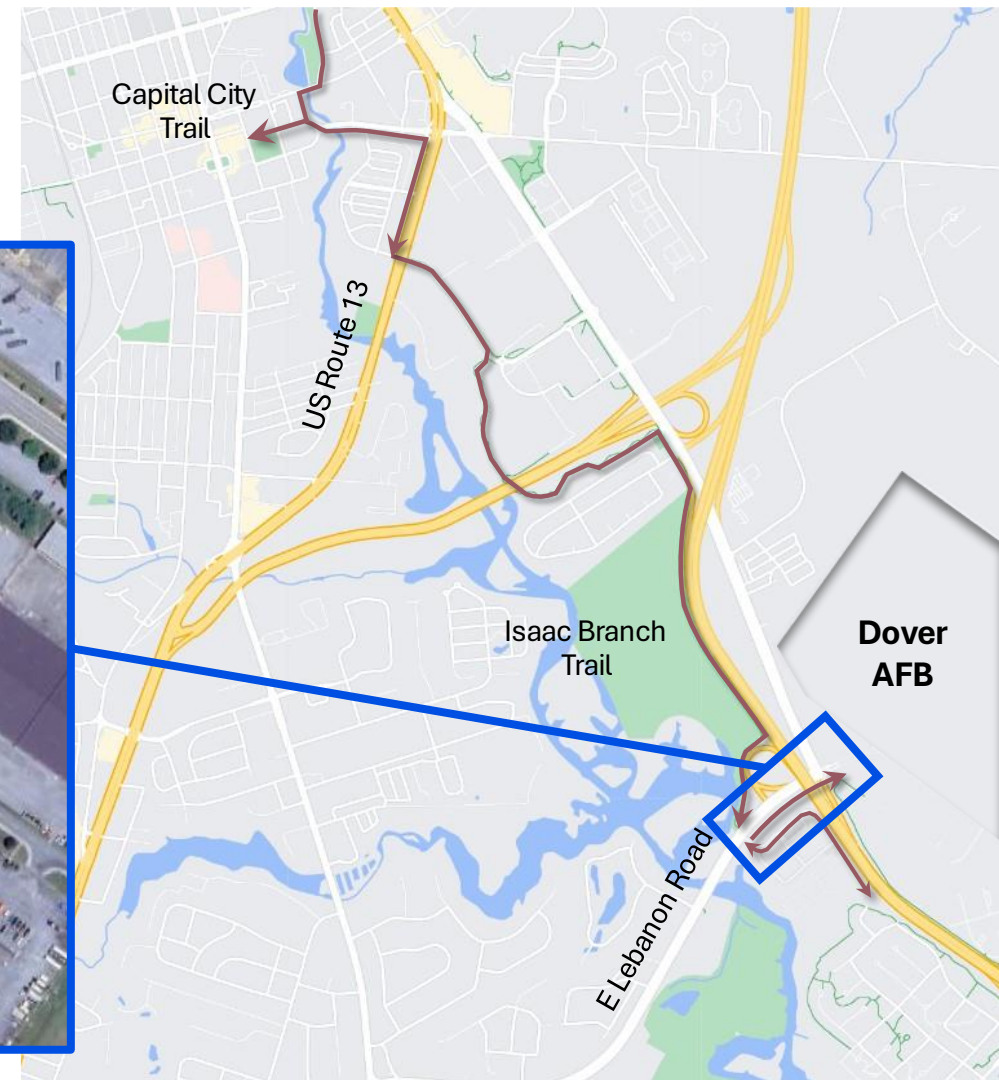
- S Dupont Highway / River Road / Public Safety Boulevard
- S Bay Road / President Drive
- Willow Grove Road / Pine Cabin Road



4. Improve the Capital City Trail

Downtown
Dover
Pathways

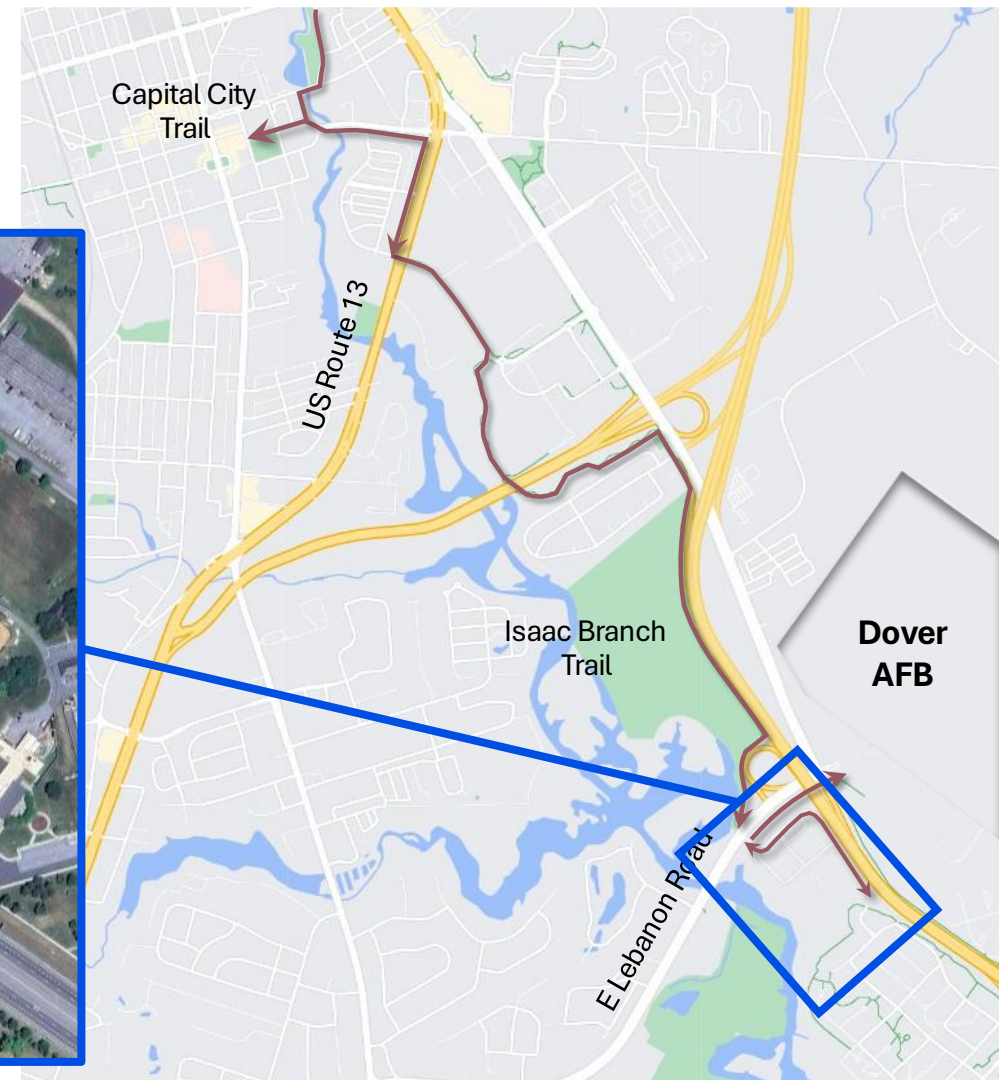
Connect to Air Force Base via
Route 10 (Willow Grove Road)



4. Improve the Capital City Trail

Downtown
Dover
Pathways

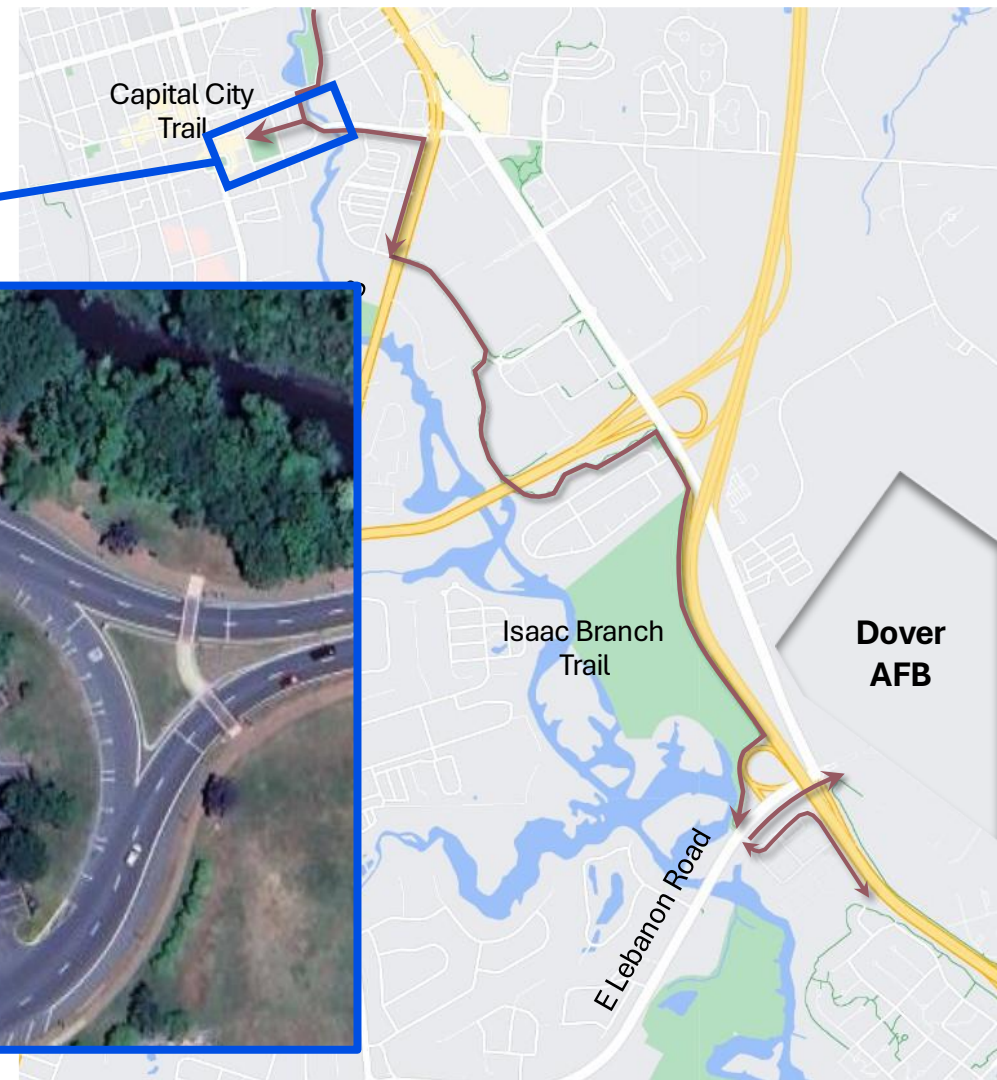
Connect to Air Force Housing via
Pine Cabin Road



4. Improve the Capital City Trail

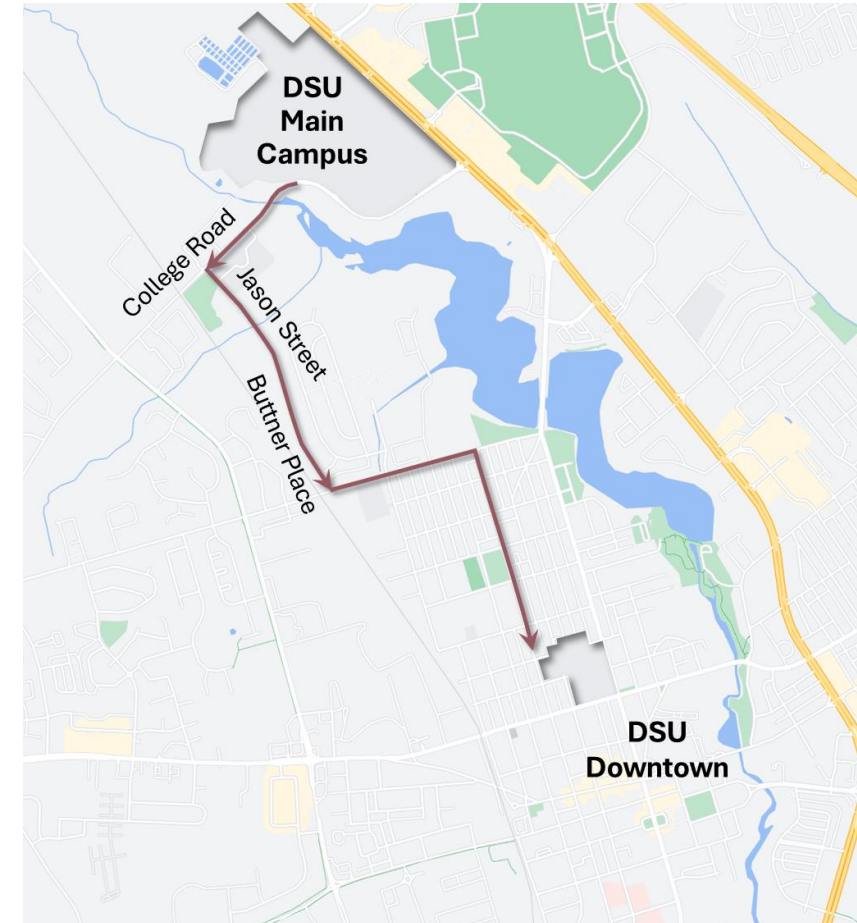
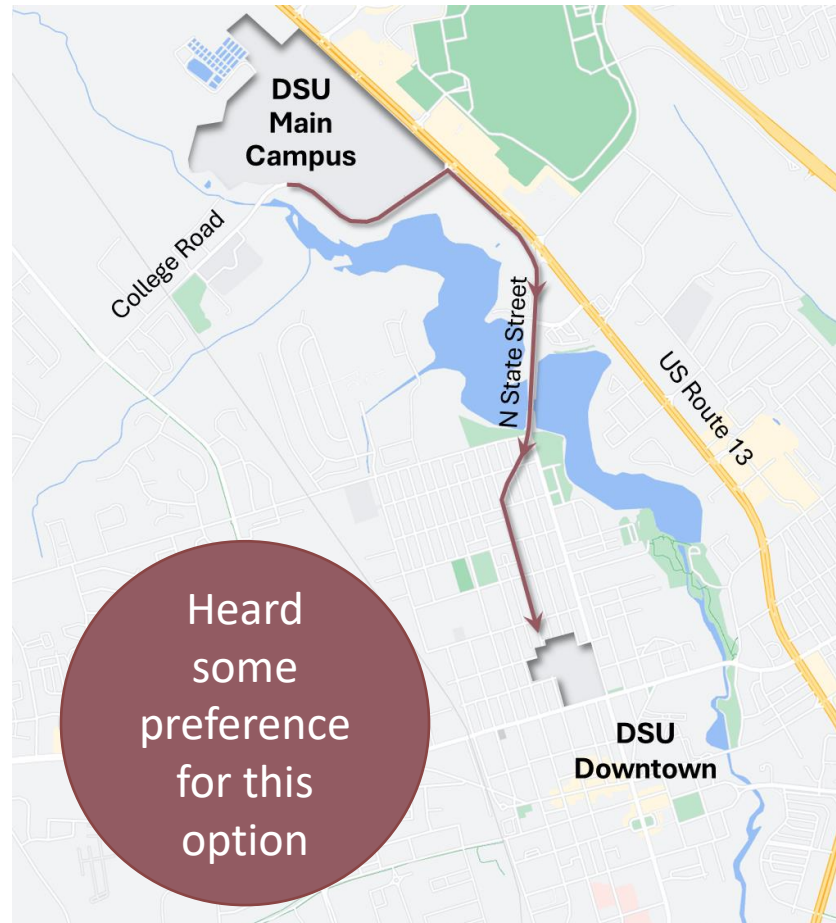
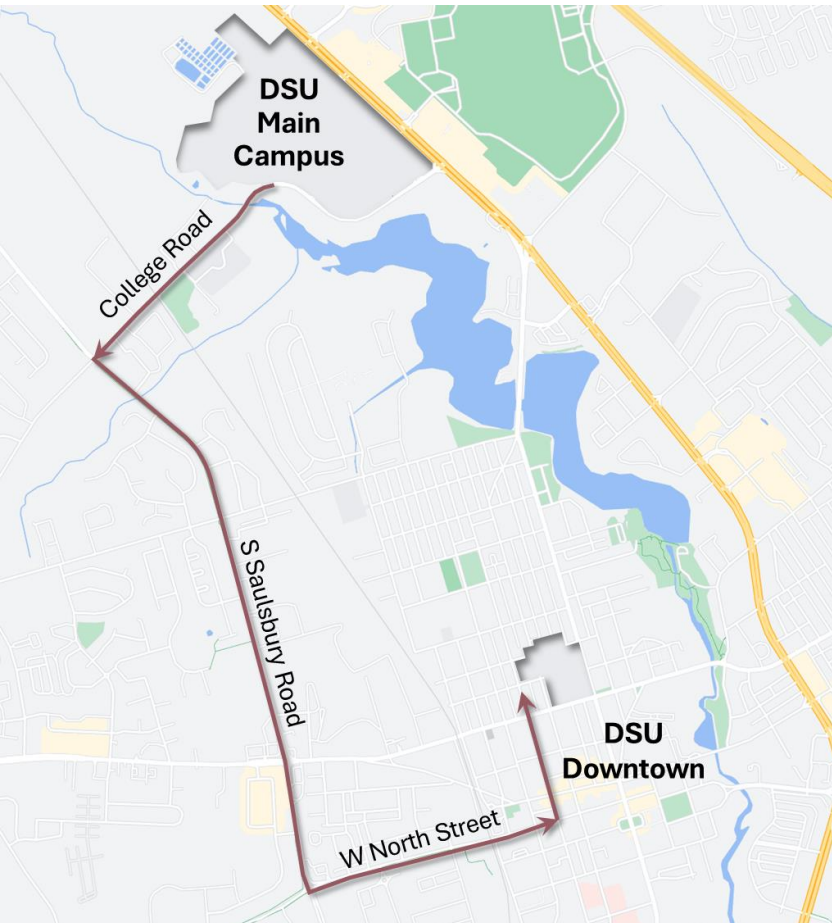
Downtown
Dover
Pathways

Connect to Downtown via
MLK Jr. Boulevard North



5. Connect DSU Campuses

Downtown
Dover
Pathways



5. Connect DSU Campuses

Install shared use path along College Road and Dupont Highway

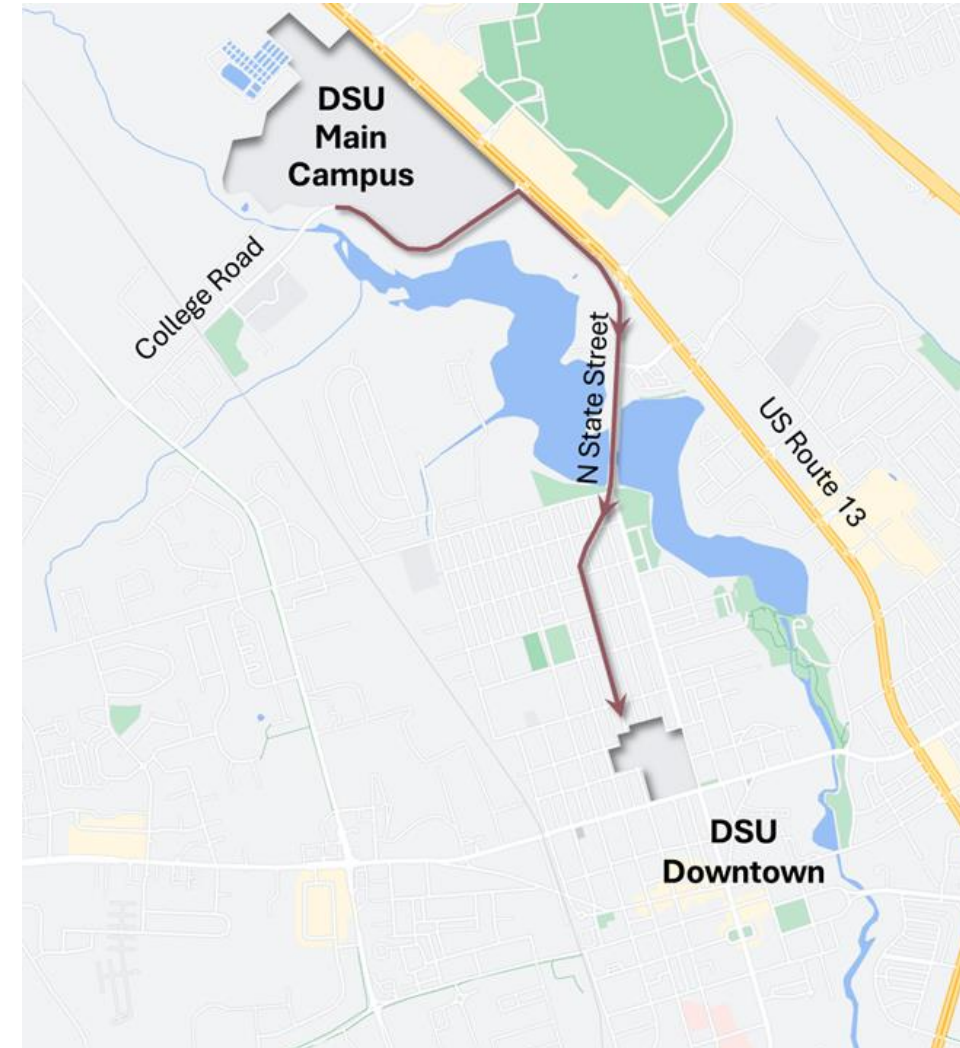
Consider feasibility of buffered bike lanes over bridge

Consider bicycle boulevard treatments along Governors Avenue

Improve intersections

Improve lighting, wayfinding, amenities, art, resting stations

Downtown
Dover
Pathways



6. Policies and Programs

- Sidewalk maintenance
- Sidewalk widening
- Bicycle parking
- Traffic calming
- Education and enforcement
- Coordination with other projects



7. Micromobility Pilot

Downtown
Dover
Pathways

- Determine managing body and designate champion
- Coordinate with key partners
- Gather information
- Clarify the service area extents
- Determine docking system type
- Release a Request for Proposal (RFP) for service providers
- Reference examples for guidance on management, community engagement, provider requirements, and stakeholder support



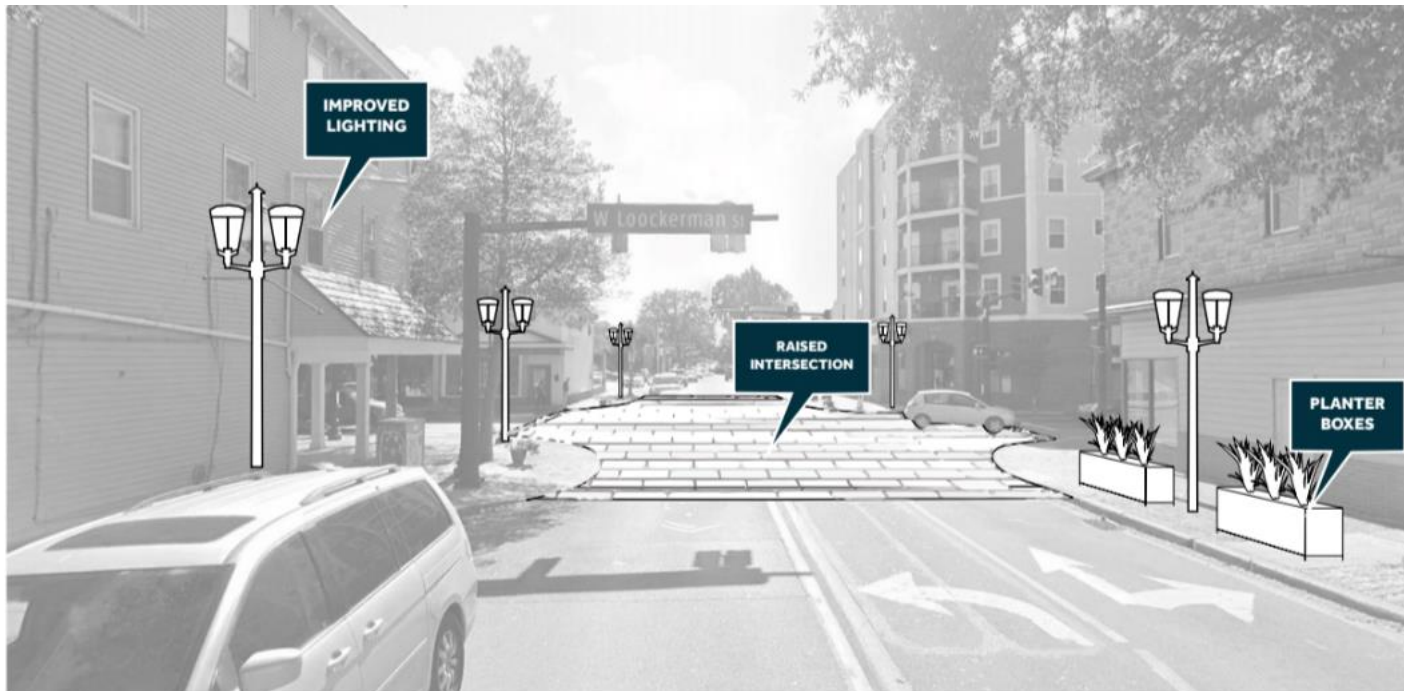
Loockerman Street



Why change Lookerman Street?

Lookerman
Street

- The Transforming Downtown Dover Plan established a vision for redeveloping Lookerman Street
- A planned utility project provides an opportunity to redesign the street



Street design changes can:

- Support existing local businesses
- Spur new development
- Tie together existing and planned land uses
- Address safety, comfort, and access

What is a Design Charrette?

Loockerman
Street

A series of collaborative meetings, activities, and discussions between residents, business owners, and others in the community to identify needs and brainstorm ideas for improving the street.

Key Charrette Outcome:
Conceptual design for Loockerman Street

Concept

Balanced approached to meeting the needs along Loockerman Street:

Maximize clear walking areas for all ages and abilities



Provide on-street parking and loading for businesses



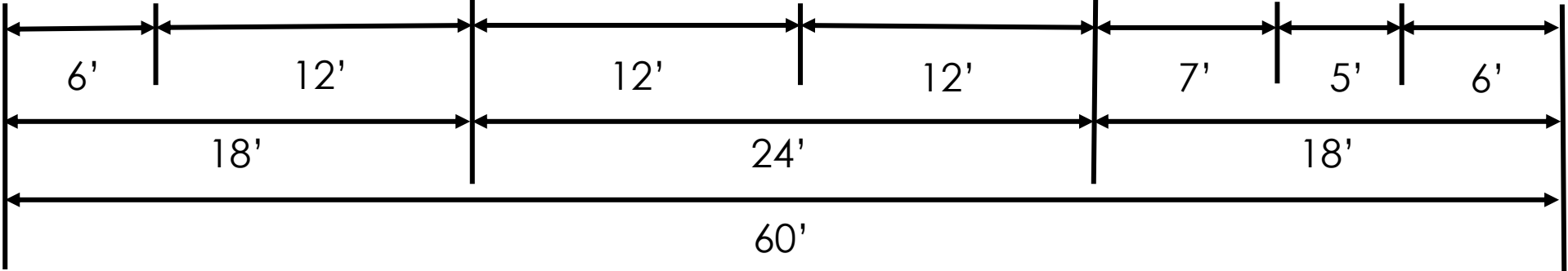
Ensure long-term, sustainable tree canopy



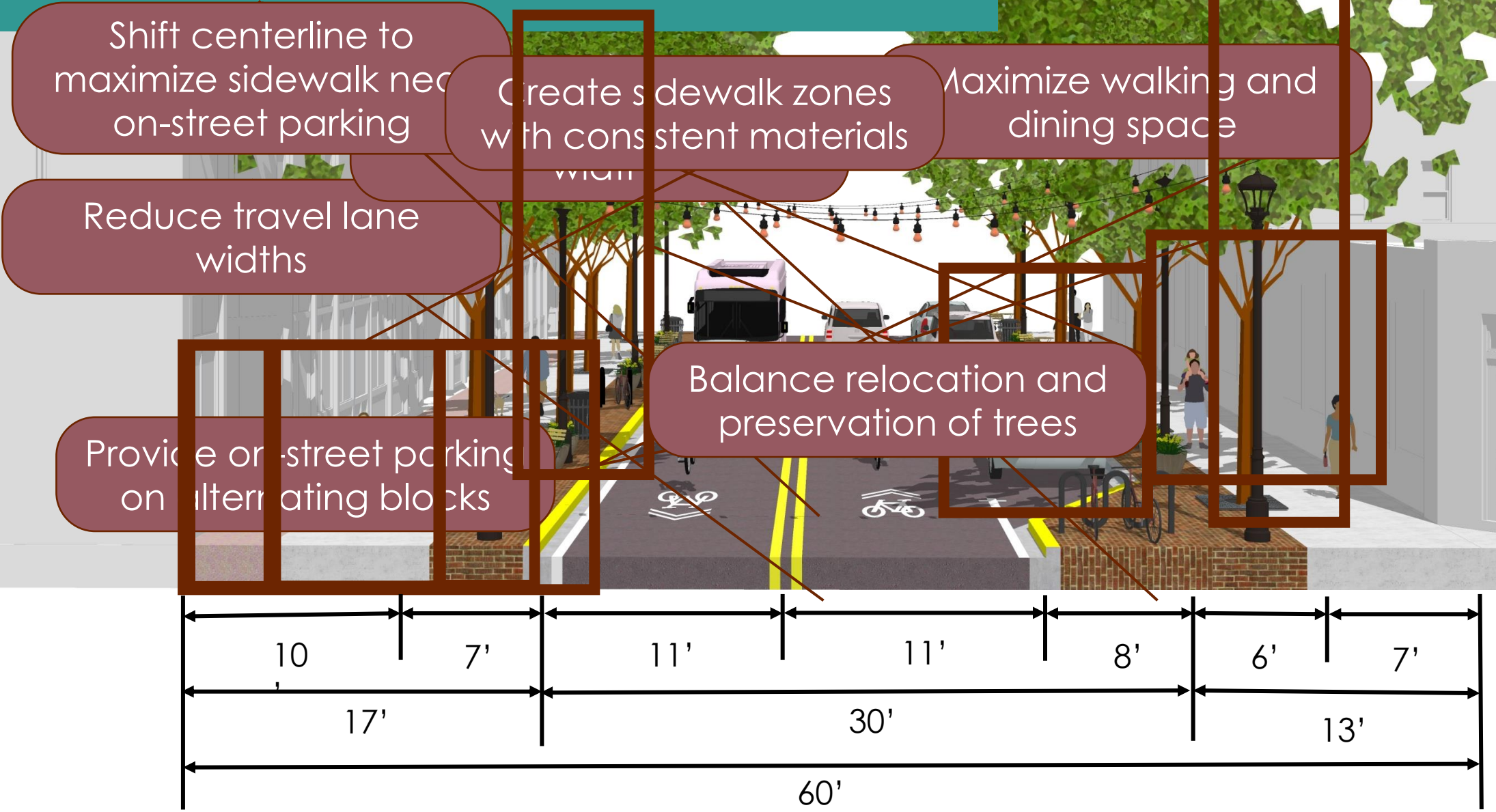
Improve pedestrian safety



Loockerman Today



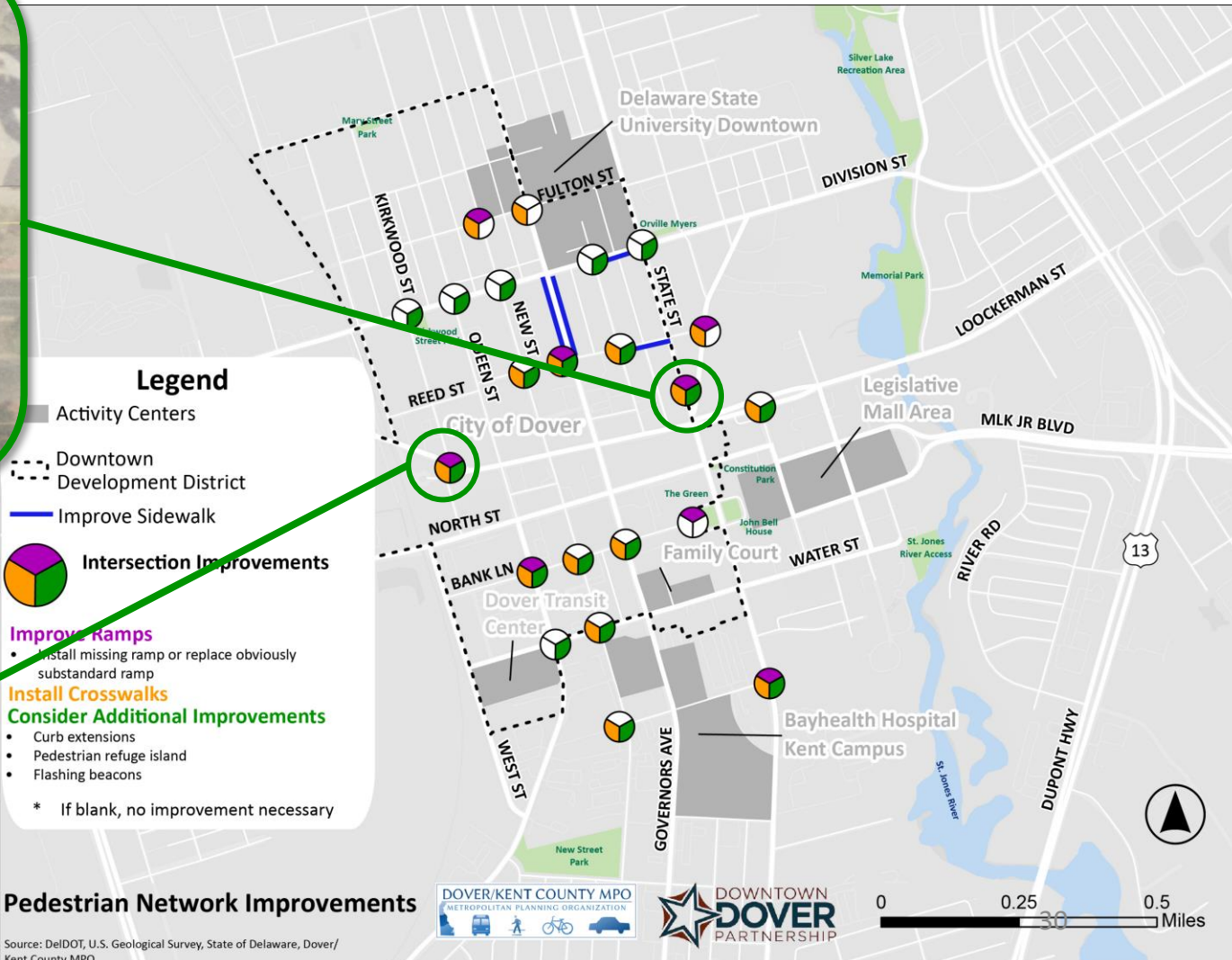
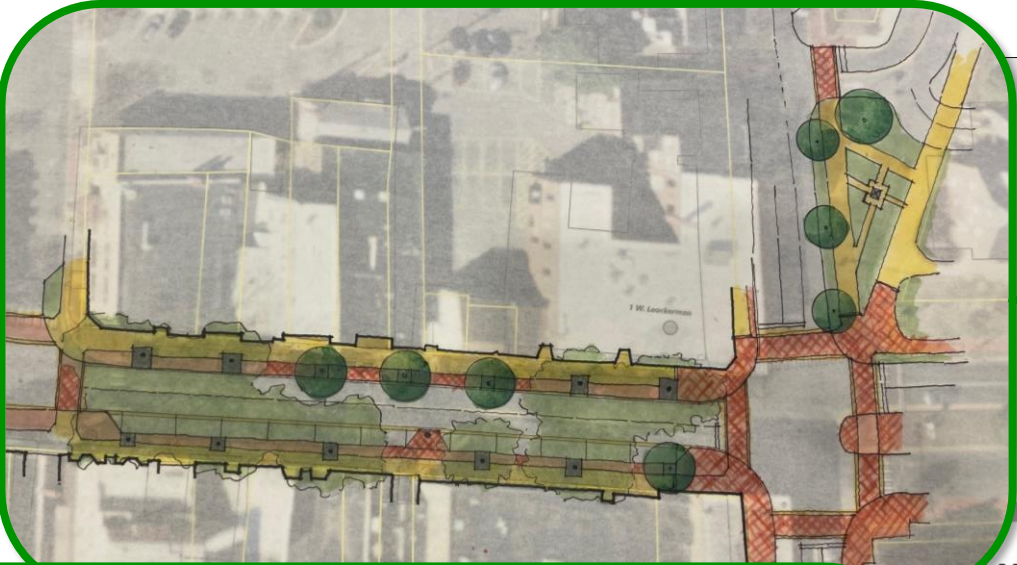
Loockerman Tomorrow



Lockerman Tomorrow – Long Term

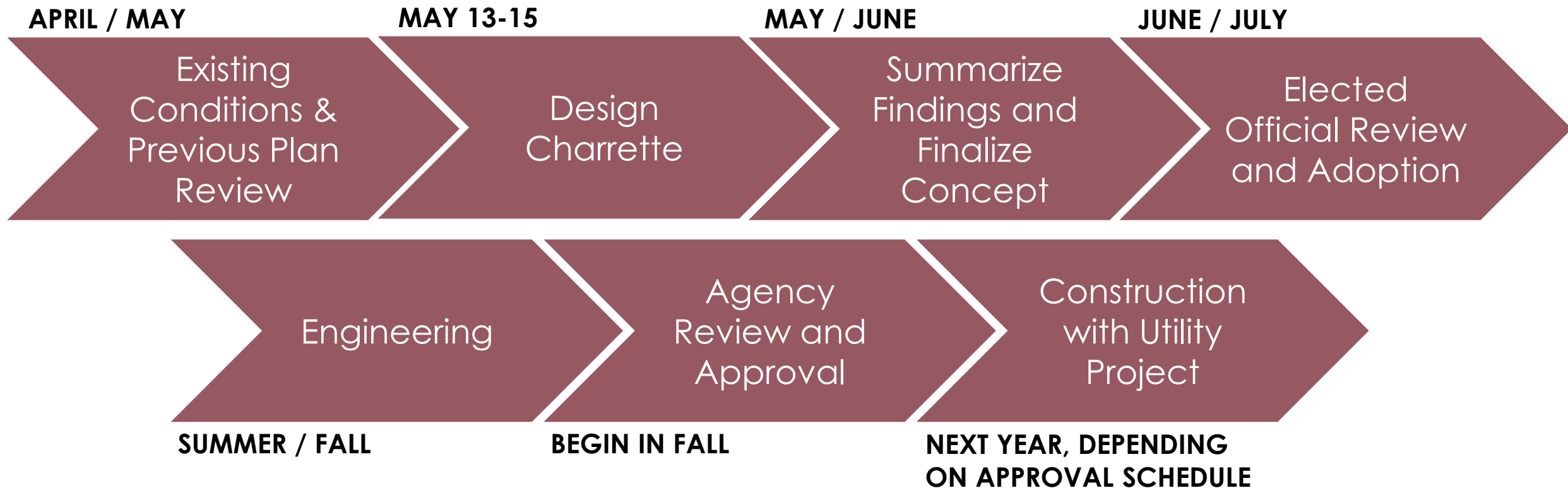


Gateways



Loockerman Street Delivery

Loockerman
Street



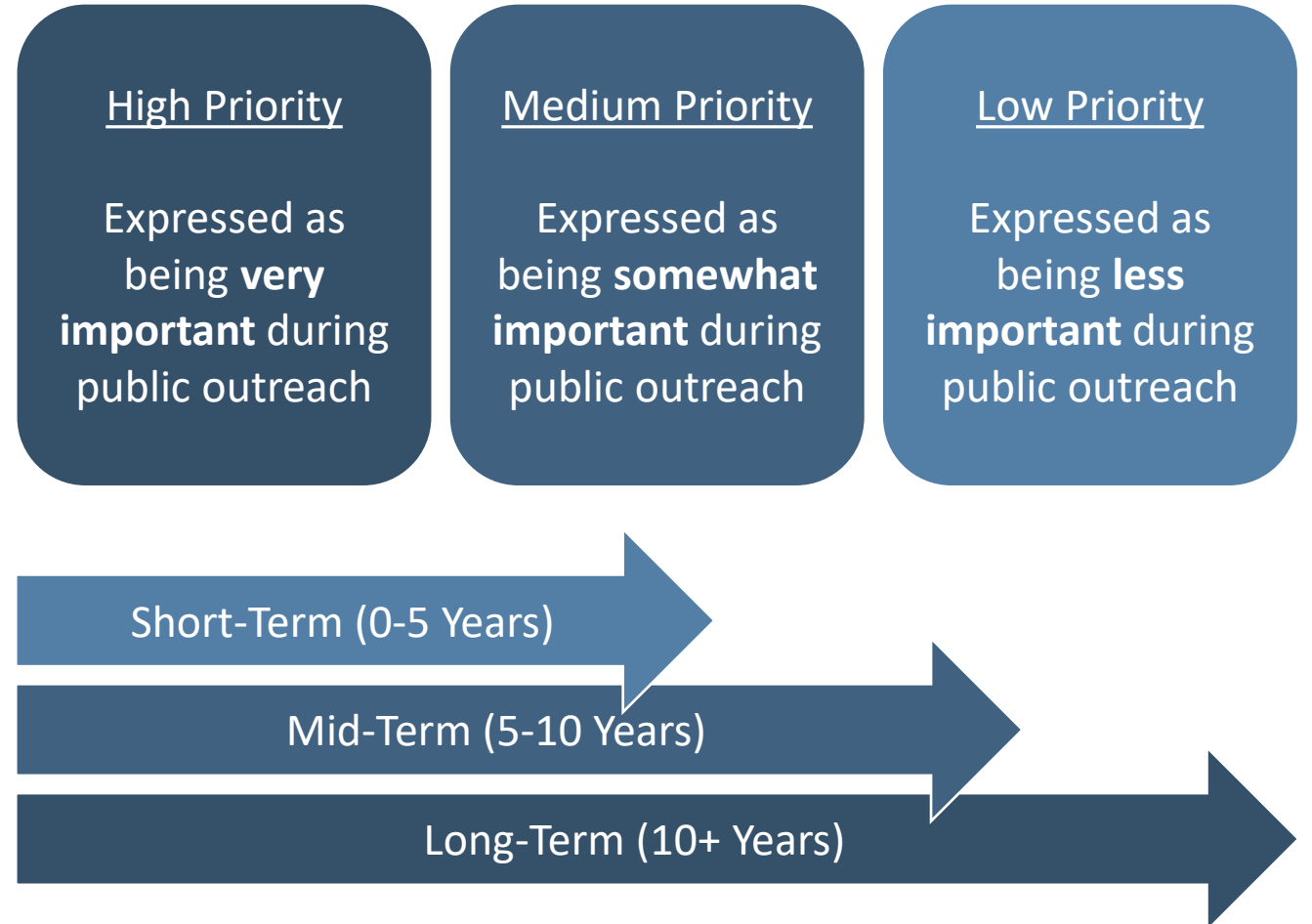
Implementation



Project Considerations

Downtown
Dover
Pathways

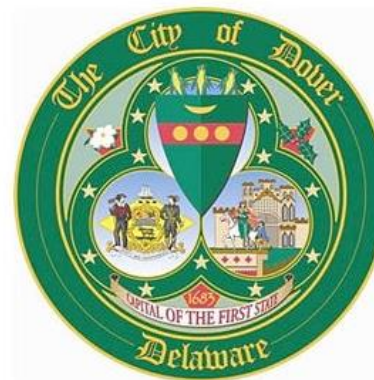
- Prioritization and phasing
- Partners
- Maintenance and operations
- Costs and funding sources



Project Considerations

Downtown
Dover
Pathways

- Prioritization and phasing
- Partners
- Maintenance and operations
- Costs and funding sources



Project Considerations

Downtown
Dover
Pathways

- Prioritization and phasing
- Partners
- Maintenance and operations
- Costs and funding sources

Street Maintenance



Service Operations



Emergency Services



Curbside Needs



Project Considerations

Downtown
Dover
Pathways

- Prioritization and phasing
- Partners
- Maintenance and operations
- Costs and funding sources

Federal Funding

- Transportation Alternatives Program (TAP)
- Safe Streets & Roads for All (SS4A)
- Active Transportation Infrastructure Investment (ATIIP)
- Rebuilding American Infrastructure (RAISE)
- Congestion Management and Air Quality Improvement Program (CMAQ)

State Funding

- Statewide Bicycle and Pedestrian Funding Program “Bike/Ped Pool”
- DeIDOT Capital Transportation Program (CTP)

Local Funding

- City Capital Funding
- Maintenance / Resurfacing
- Local Private Development

Next Steps



Next Steps

Downtown
Dover
Pathways



- MPO Public Advisory Committee (PAC) presentation June 13, 2024
- MPO Technical Advisory Committee (TAC) presentation June 18, 2024
- MPO Council Meeting presentation July 3, 2024
- Submit final report by the end of July

Thank you!



Malcolm Jacob

(Malcolm.Jacob@doverkentmpo.org)



Tara Hofferth
(thofferth@kittelton.com)

Jeff Riegner
(jriegner@kittelton.com)