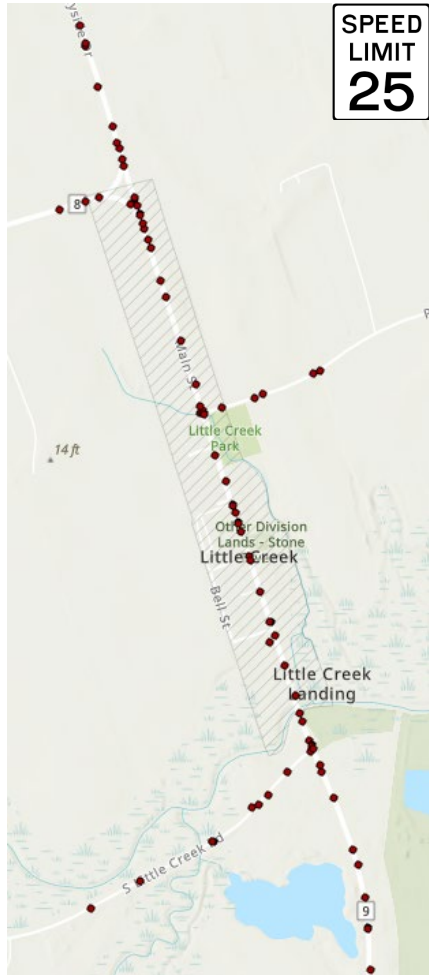


# Priorities Within the Town

According to conversations with municipal officials  
and Town comprehensive plan

Vehicle crashes (2010 – 2023)



Transportation safety  
(speeding and walkability)



First responders



Flooding and other  
environmental concerns



Flood map (5 feet above sea level)



Historic character



Eco-tourism



Agriculture





# Toolkit for Potential Safety Improvements



## Typical Study Recommendations

Repair existing sidewalks



Fill gaps in sidewalk network



Stop signs and traffic-calming



Pedestrian crossings and signals

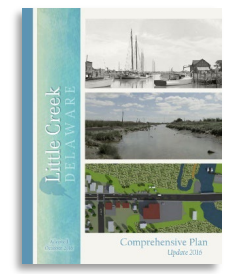


“Sharrows” or other bicycle improvements

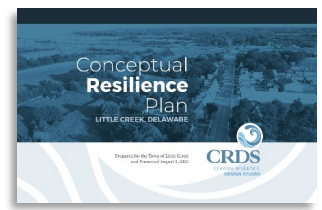


## Sources Used in This Study

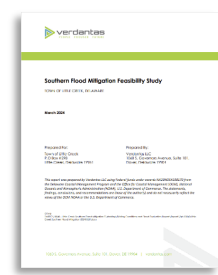
Little Creek Comprehensive Plan (2016)



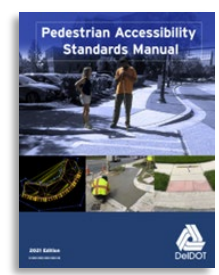
Little Creek Conceptual Resilience Plan (2021)



Recently Completed Flood Mitigation Studies



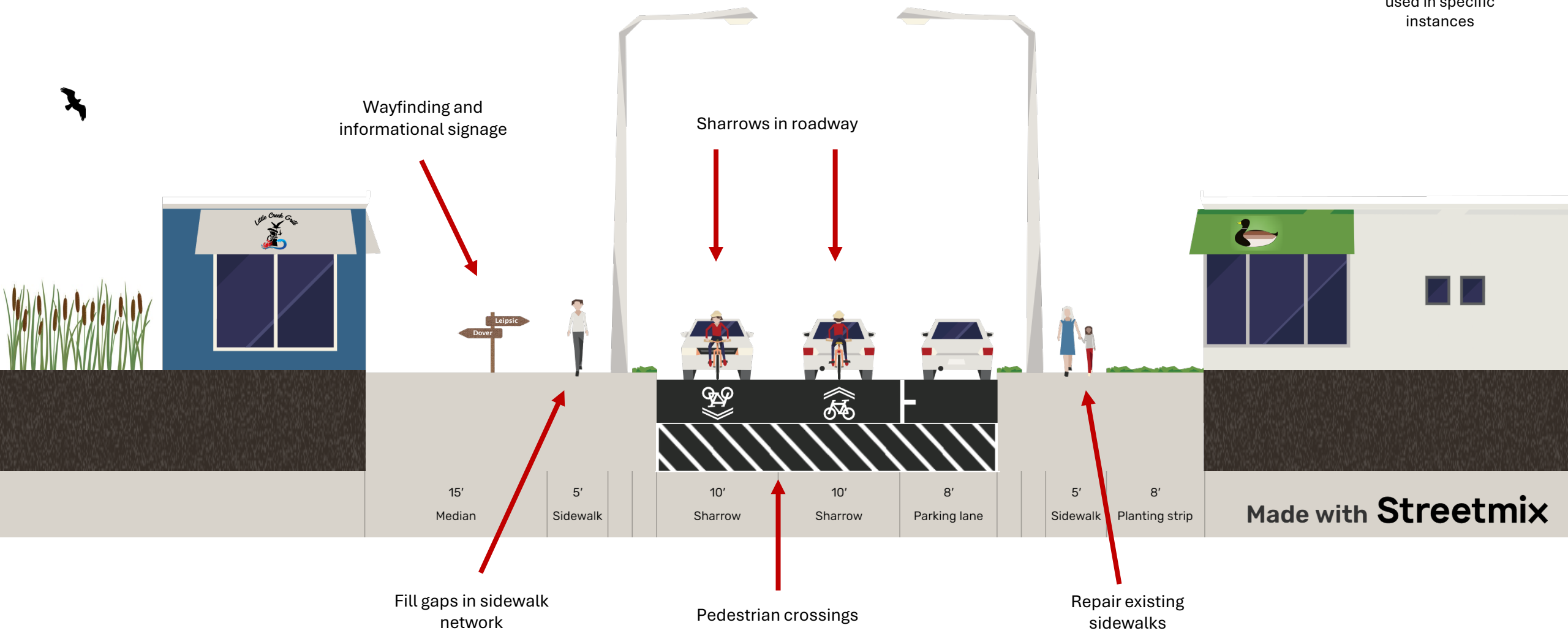
DelDOT Pedestrian Accessibility Standards Manual (2021)



# Concepts for Pedestrian Improvements: Main Street in Front of Little Creek Grill (Facing Northward)

DeIDOT standard for sidewalks: **5 feet** with ADA accessibility

“Pinch points” can be used in specific instances



Made with **Streetmix**



# Leave Your Comments Here!



Do you walk or bike in town?

Are speeding vehicles a concern for you?

What can be done to make transportation safer in Little Creek?

Or email your comments to:

[Malcolm.Jacob@doverkentmpo.org](mailto:Malcolm.Jacob@doverkentmpo.org)