

South Dover Elementary School Traffic Safety Study

Presentation to the Public Advisory Committee

4/10/2025



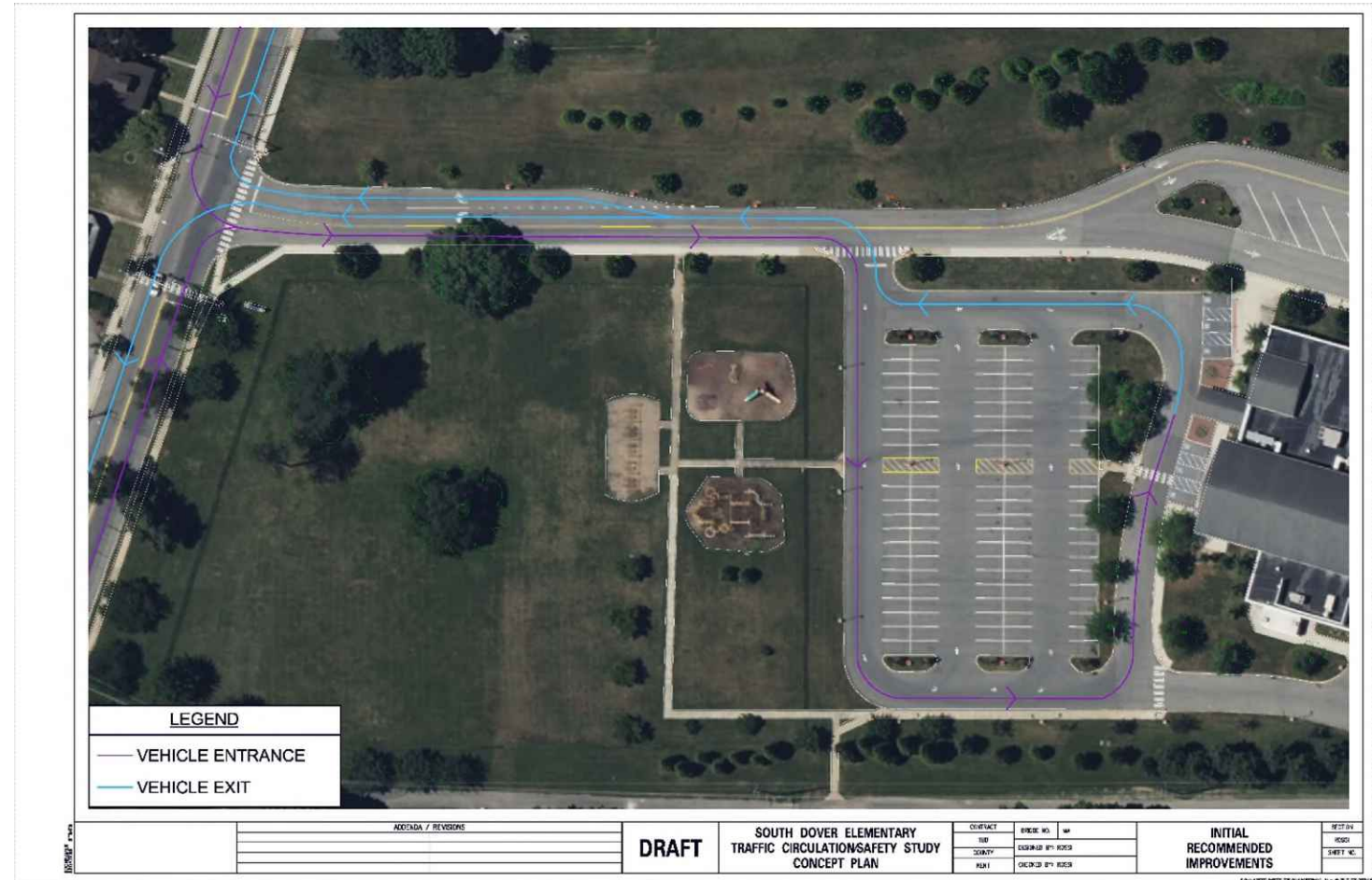
Agenda

1. Project Description
2. Review Data Collection
3. Review Initial Proposed Improvements & Recommendations
4. Questions/Comments



Project Description

- Concerns at Drop-Off and Pick-Up
 - Vehicles queuing on South State Street
 - Conflicting movements between vehicles and school buses
 - Safety and efficiency of traffic circulation



Review Data Collection

A thick, hand-drawn style orange line that underlines the title "Review Data Collection". It starts under the 'R' and ends under the 'n', following the width of the text.



Data Collection

- Field Observations
- Traffic Counts
- Three Years of Crash Data

Data Collection



- 11/19/2024
- 12/17/2024
- Four Observers
- Drop-Off & Pick-Up

Issues Identified



Internal Intersection at Parking Lot
Entrance Functions Poorly



Queuing on South State Street

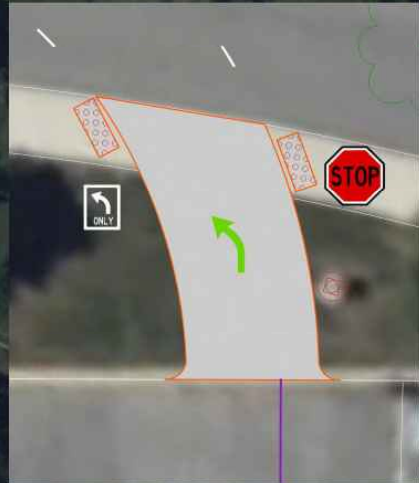
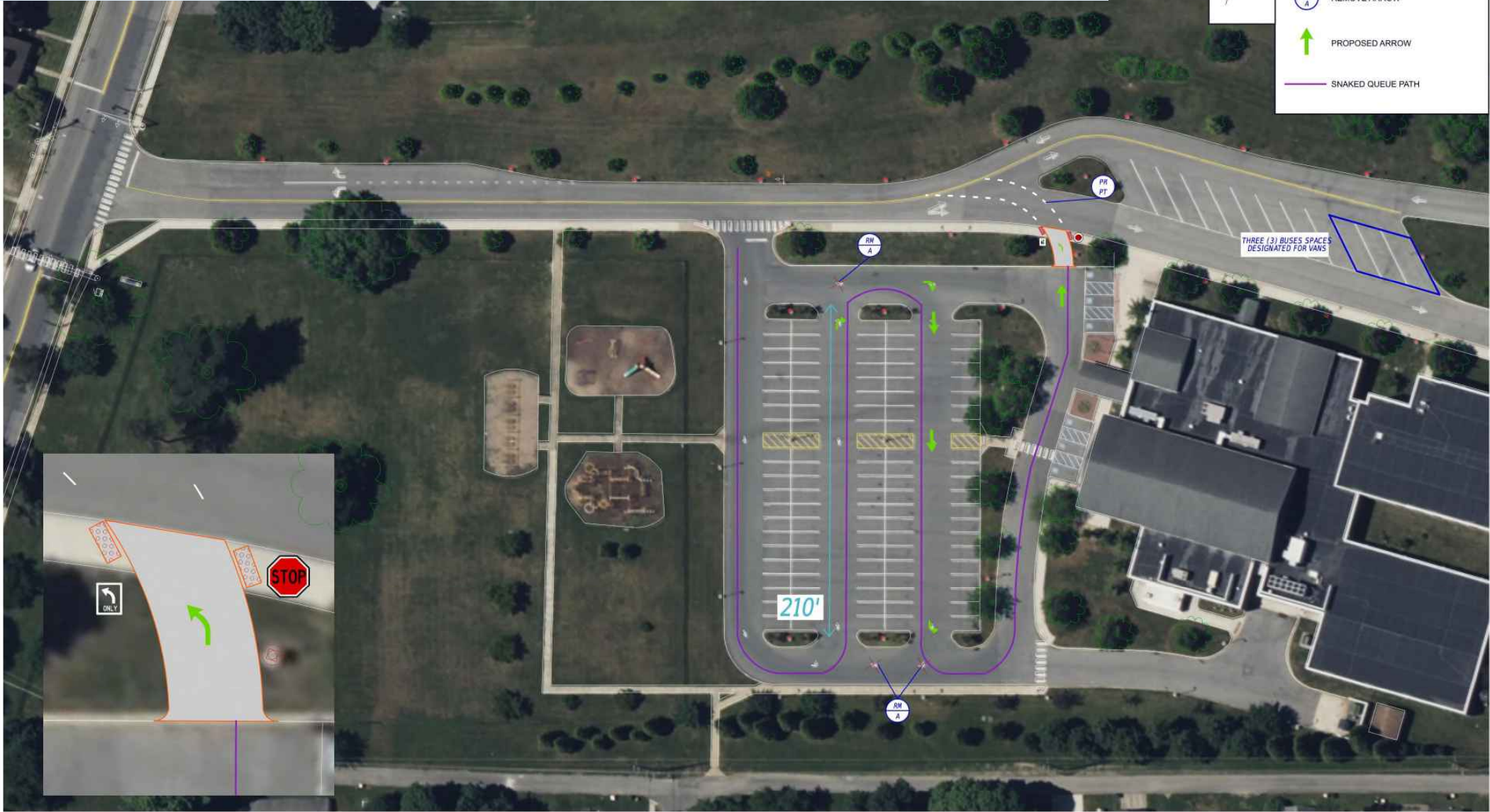
- 8:30 a.m. – 8:40 a.m.
- 3:20 p.m. – 3:30 p.m.



Review Initial Proposed Improvements & Recommendations









Recommendation A: Snaked Queuing with Parking Lot Exit Lane



Recommendation B: Install Right Turn Lane

Only if Recommendation A is Ineffective



LEGEND	
	RELOCATE LIGHT
	RELOCATE OR REMOVE TREE
	RELOCATE JUNCTION WELL
	PROPOSED DASHED STRIPING
	PROPOSED ARROW
	SNAKED QUEUE PATH



Recommendation C: Extend Westbound Right-Turn Lane

Only if Recommendation A is Ineffective



ADDENDA / REVISIONS		DRAFT	SOUTH DOVER ELEMENTARY TRAFFIC CIRCULATION/SAFETY STUDY IMPROVEMENTS CONCEPT PLAN	CONTRACT	BRIDGE NO.	NA	POTENTIAL FUTURE IMPROVEMENT WEST-BOUND LANE EXPANSION	SECTION
				TBD	DESIGNED BY:	ROSE		ROSE
				COUNTY	CHECKED BY:	ROSE		SHEET NO.
				RENT				

Signing and Marking Recommendations

The following signing and marking recommendations were provided by DelDOT. These recommendations detail the improvements required to make the School Zone compliant with MUTCD (Manual on Uniform Traffic Control Devices) standards.

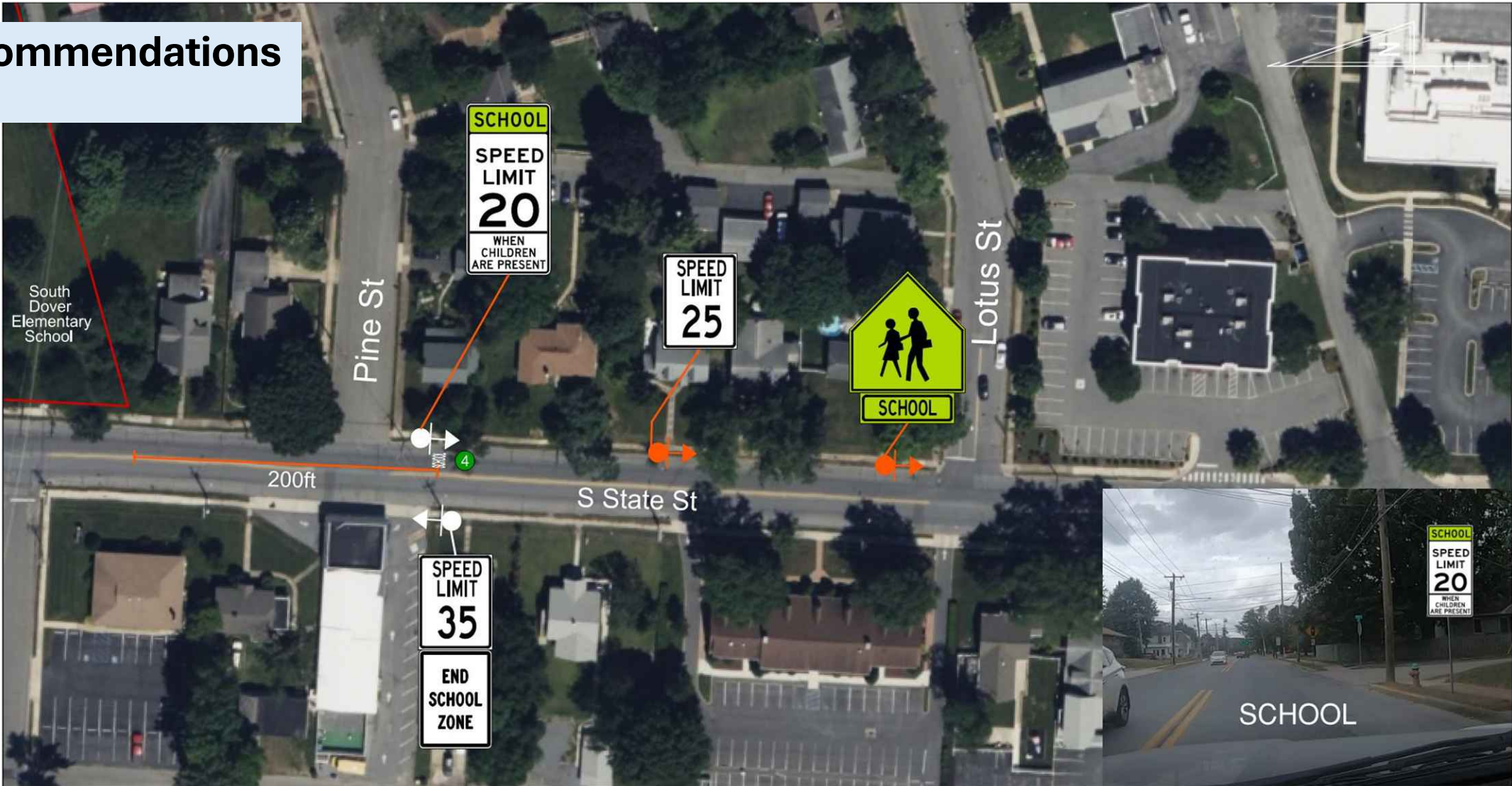
Marking Recommendations

1 of 2



Marking Recommendations

2 of 2



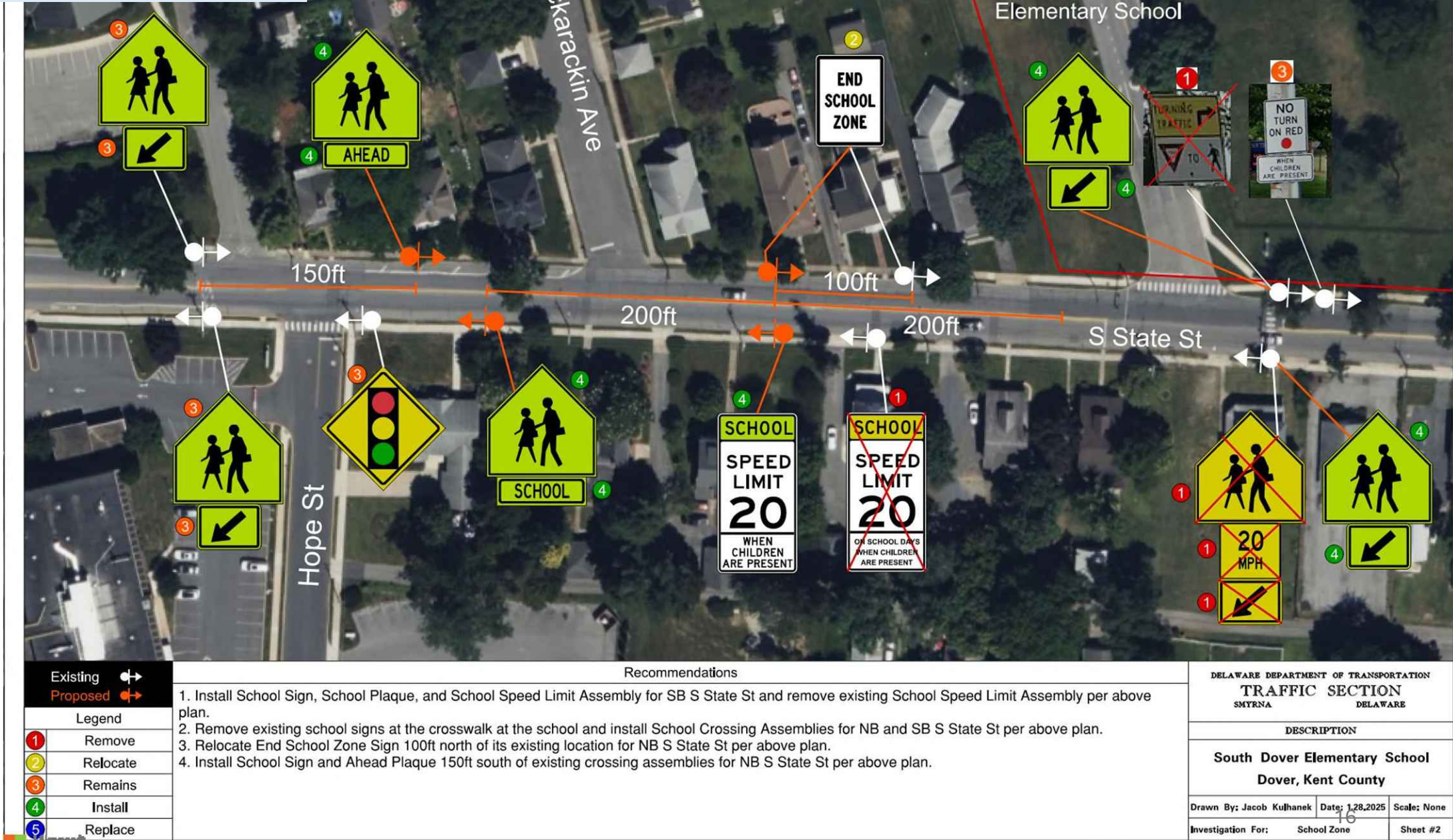
Existing	Proposed
1	Remove
2	Relocate
3	Remains
4	Install
5	Replace

Recommendations	
1. Install School Pavement Markings at new School Speed Limit Assembly 200ft from school property for NB S State St per above plan.	

DELAWARE DEPARTMENT OF TRANSPORTATION TRAFFIC SECTION SMYRNA DELAWARE		
DESCRIPTION		
South Dover Elementary School Dover, Kent County		
Drawn By: Jacob Kulhanek	Date: 1/28/2025	Scale: None
Investigation For: School Zone	Sheet #3	

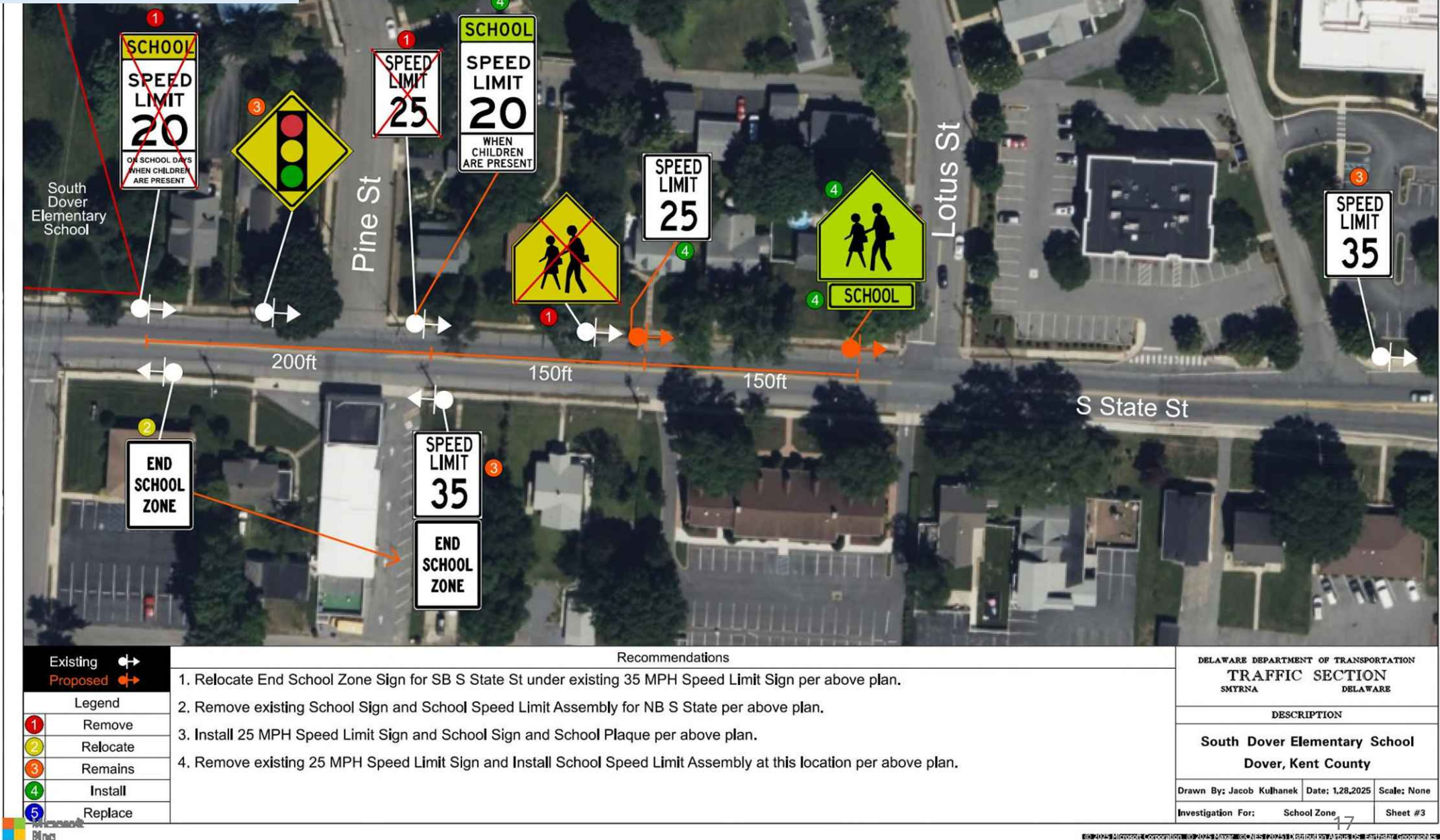
Signing Recommendations

1 of 2

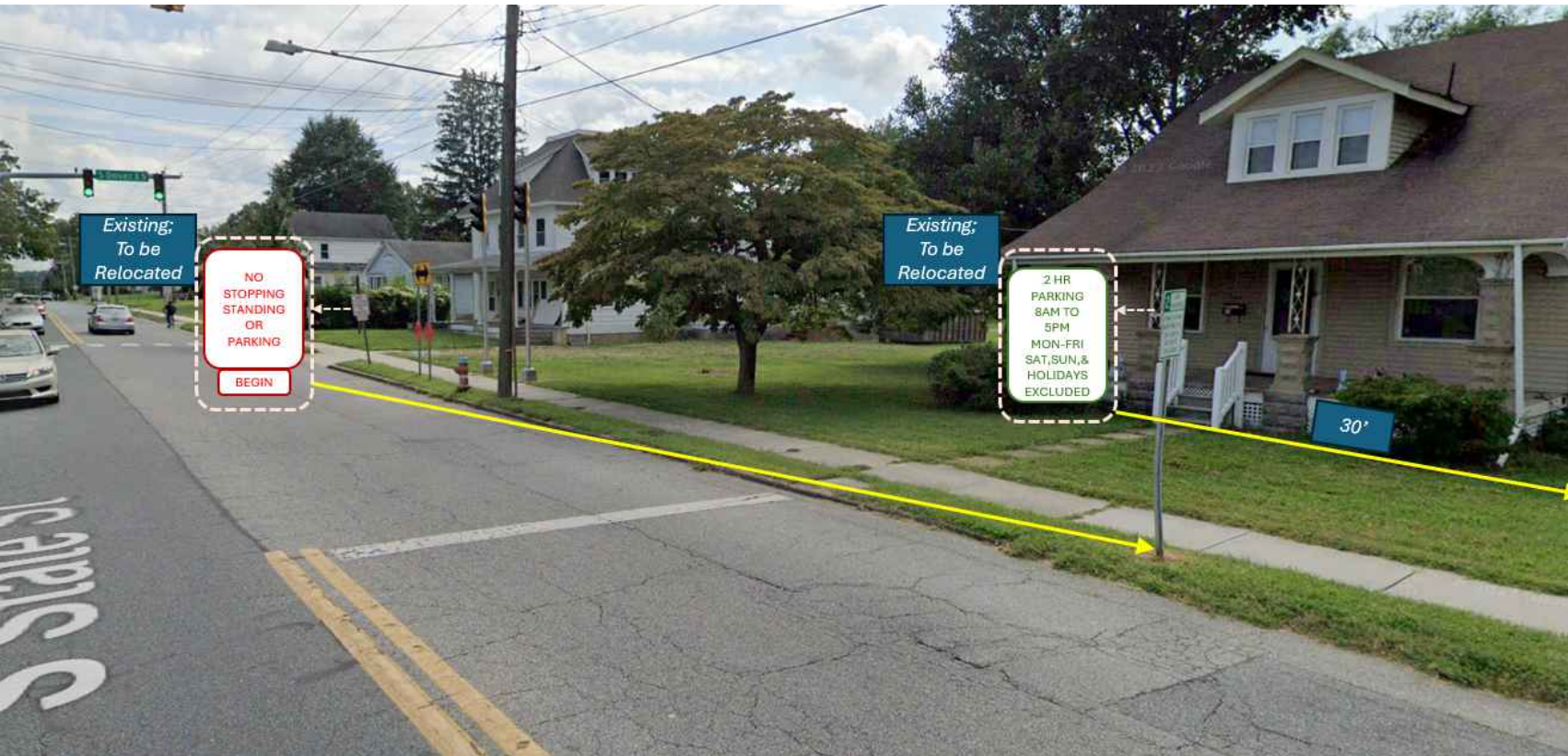


Signing Recommendations

2 of 2



Relocation of “No Stopping, Standing or Parking Begin” Sign



The existing “No Stopping, Standing or Parking Begin” sign allows for vehicles to park too close to the intersection and makes it difficult for buses to turn right onto South State Street, blocks vehicles from going around left turn waiting vehicles, and blocks the view of pedestrians. It is recommended to move it approximately 60 feet north.

Other Recommendations

- Remove Tree that obstructs view of pedestrians
- Provide traffic awareness education for students.
- Follow MUTCD crossing guard guidance.



Recommendation	Responsible Party	Time Frame
Implement Snaked Queuing with Parking Lot Exit Lane	Capital School District	Prior to 2025-2026 school year
Installation of Right-Turn Lane on South State Street	City of Dover, with approval from DelDOT	If the Snaked Queuing and Parking Lot Exit Lane do not address queuing, this will be considered in the future.
Extension of Westbound Right-Turn Lane Exiting School	Capital School District	If the Snaked Queuing and Parking Lot Exit Lane do not address queuing, this will be considered in the future.
Removal of Tree at the Southeast Corner of South State Street and School Entrance Drive	City of Dover	Prior to 2025-2026 school year
Planting of new replacement tree on school property	Capital School District	2025-2026 school year
Traffic Awareness for Students	Capital School District (with DelDOT support)	2025-2026 school year
Implementation of Crossing Supervision Standards	Capital School District	Immediate
Implementation of School Zone Signing and Marking Improvements	City of Dover, with approval from DelDOT	Prior to 2025-2026 school year

Questions/Comments?

A thick, hand-drawn style orange line that underlines the text "Questions/Comments?".