

South Central Kent County Circulation & Sufficiency Update

Dover/Kent County MPO Council Meeting

05/07/2025



2025 Delaware Total Fatalities

as of 04/07/25

	2025	2024				2023			
	Year-to-date	Year-to-Date		Total		Year-to-Date		Total	
Fatalities	19	26	↓	-27%	130	42	↓	-55%	137
Delaware Residents	13	22	↓	-41%	110	32	↓	-59%	110
Person Types									
Vehicle Occupant	12	17	↓	-29%	65	29	↓	-59%	89
Pedestrian	6	6		0%	34	8	↓	-25%	28
Bicyclist	1	1		0%	5	2	↓	-50%	5
Motorcyclist	0	2	↓	-100%	21	3	↓	-100%	14
Other Person Type	0	0		N/A	5	0		N/A	1
Crash Types									
Curve Related	2	4	↓	-50%	23	8	↓	-75%	28
Roadway Departure	7	9	↓	-22%	42	19	↓	-63%	69
Intersection Related	4	9	↓	-56%	48	13	↓	-69%	37
Median Crossover	0	0		N/A	0	2	↓	-100%	8
Wrong Way	2	1	↑	+100%	4	0	↑	+100%	1
Work Zone	1	2	↓	-50%	5	3	↓	-67%	9

Agenda

- Project Purpose & Study Area
- Existing Conditions & Data Review
- Analysis
- Recommendations



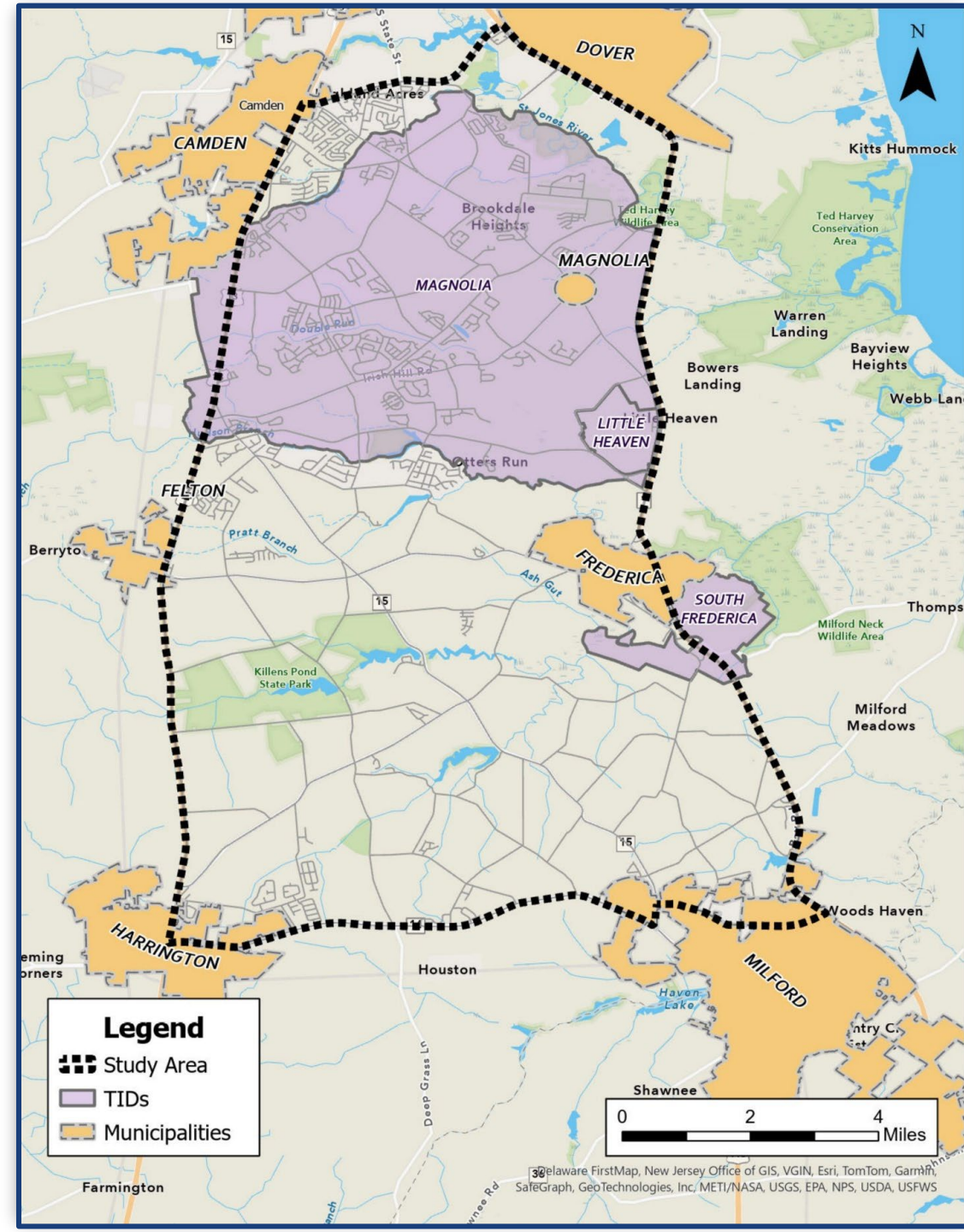
South Central Kent County Circulation & Sufficiency Study 2025



Project Purpose and Study Area

Evaluate the area roadways to develop recommendations for short-term (1-5 years) and medium-term (6-10 years) circulation improvements. Assess the potential need for:

- Roadway improvements
- Transit improvements
- Bike/pedestrian system improvements

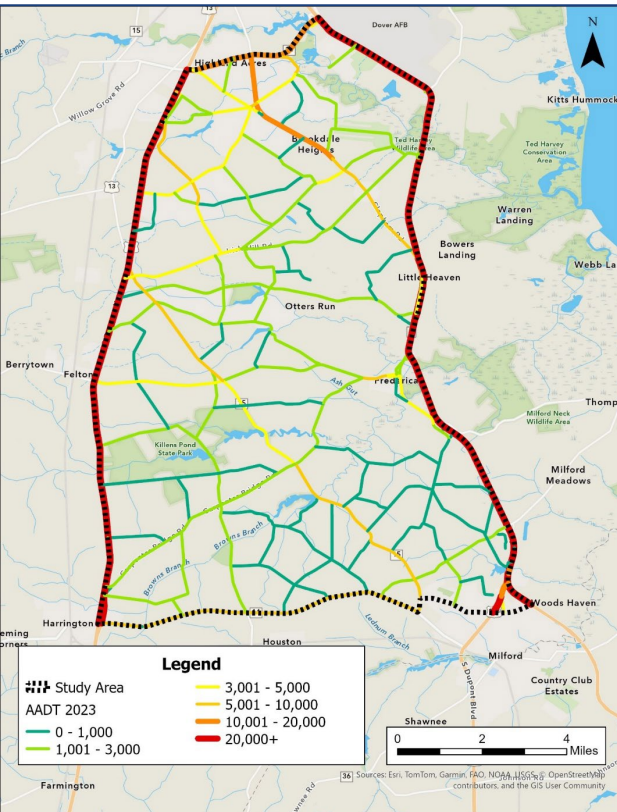


Existing Conditions

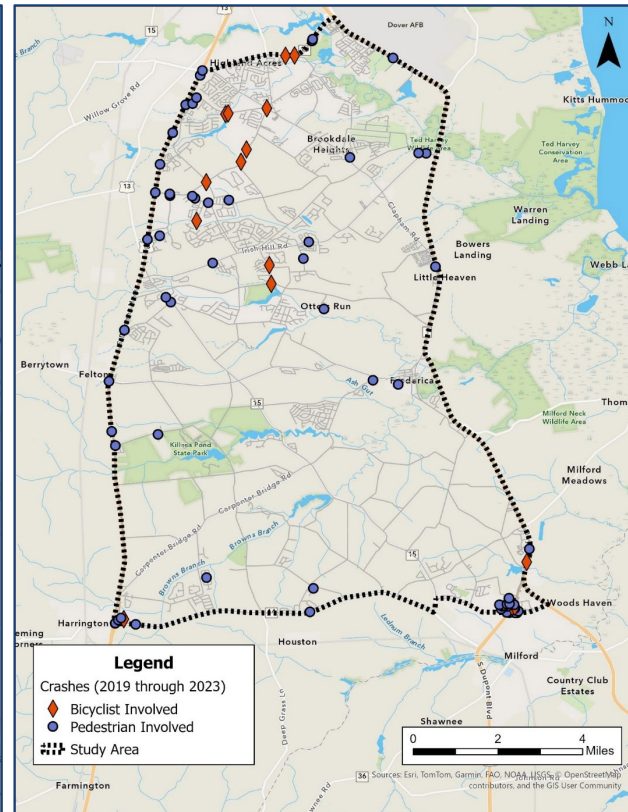
- Roadway classification
- Signalized intersections
- Bicycle level of traffic stress
- Pedestrian facilities
- Transit locations
- Community facilities
- Freight routes



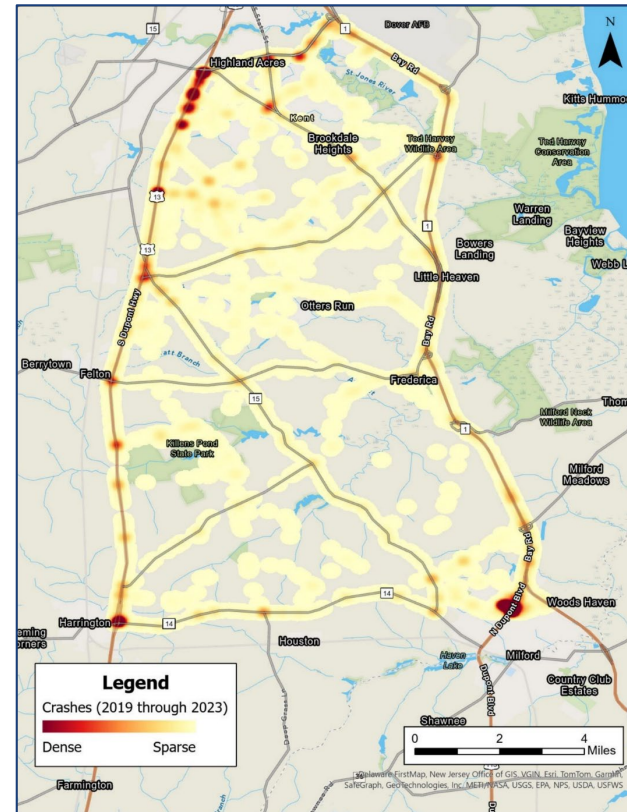
Data Collection



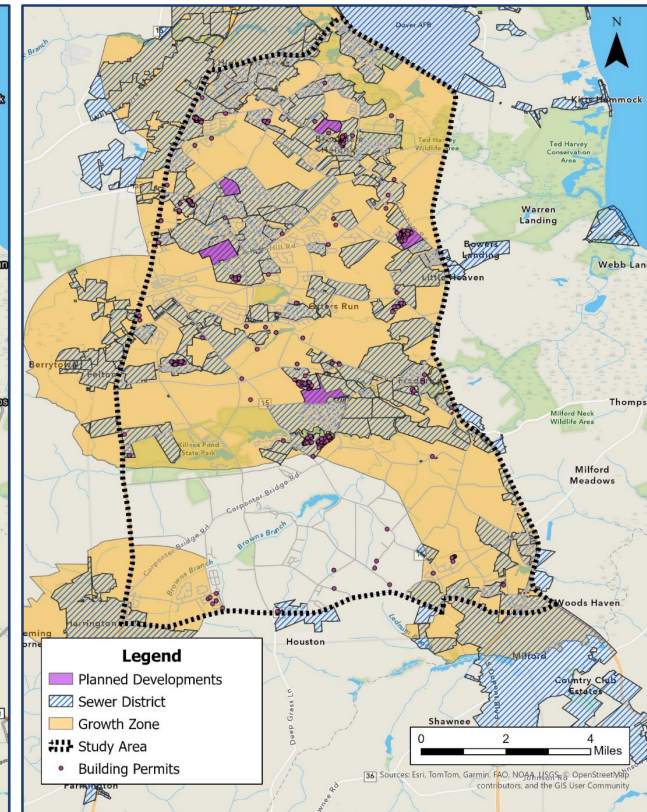
Travel Volumes



Bike/Ped Crash



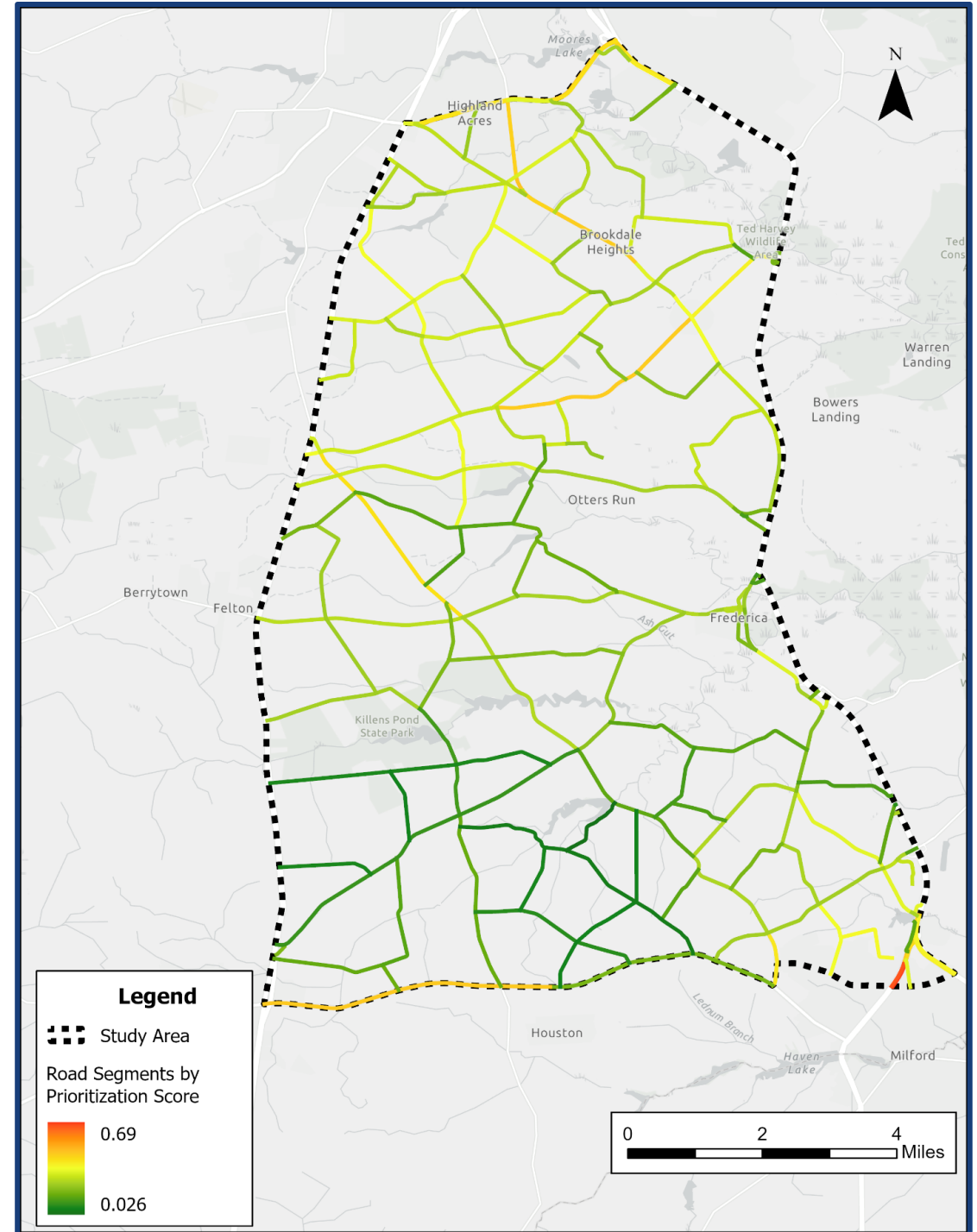
All Crash Hotspots



Development Activity

Analysis

Factor	Layer	Layer Score	Factor Score
Safety	Crash Index	15.0%	25.0%
	HSIP Locations	10.0%	
System Operating	V/C Ratio	10.0%	20.0%
	AADT >= 10,000	10.0%	
Development	PLUS Level	5.0%	20.0%
	Permits by Block Group	2.5%	
	Planned Developments by Block group	2.5%	
	Within a Growth Zone	5.0%	
	Within a TID	5.0%	
Multimodal/Destinations	Bicycle LTS	5.0%	17.5%
	Pedestrian Network	5.0%	
	Transit Walksheds	5.0%	
	Freight Corridor	2.5%	
Equity/EJ	Low Income	2.5%	17.5%
	Disabilities	2.5%	
	L.E.P.	2.0%	
	Seniors	2.0%	
	Zero Car Households	5.0%	
	Minority	2.0%	
	Flood Risk	1.5%	
Total			100%

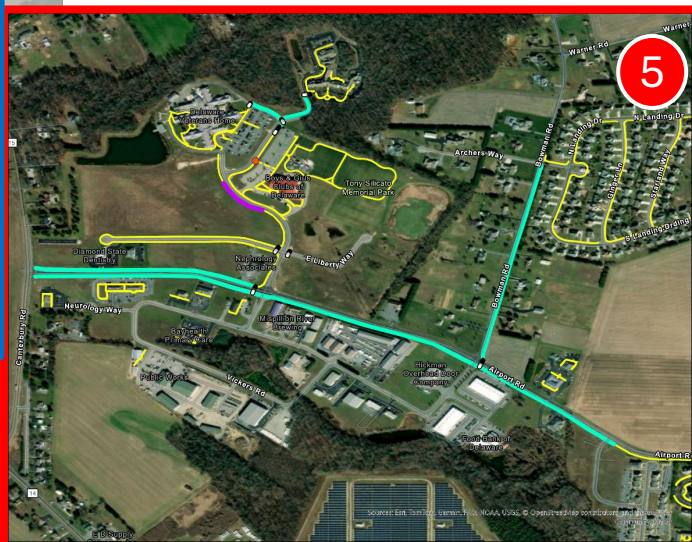
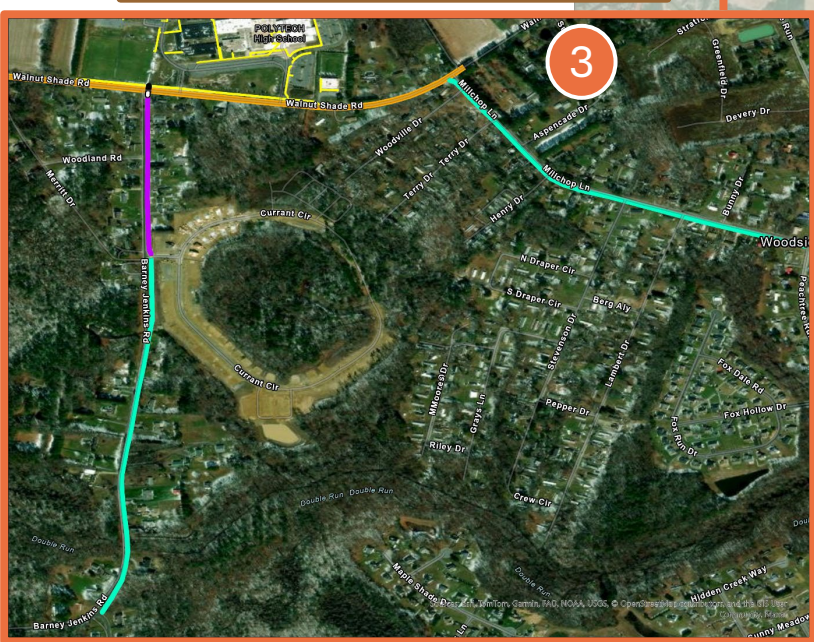
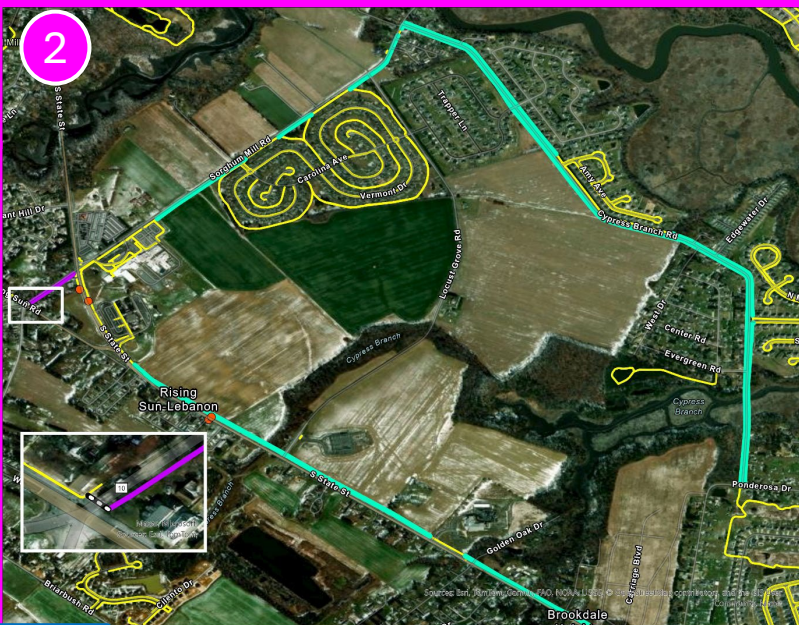
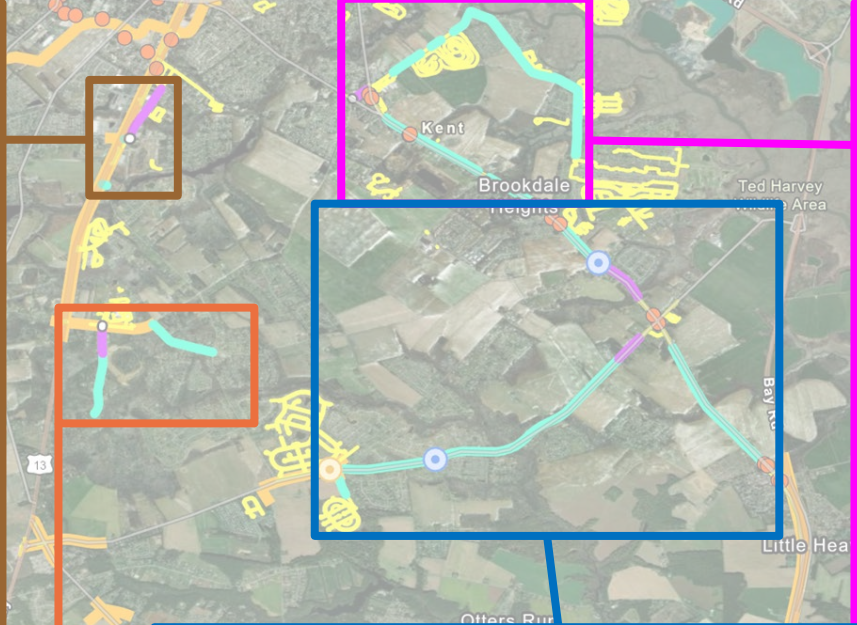
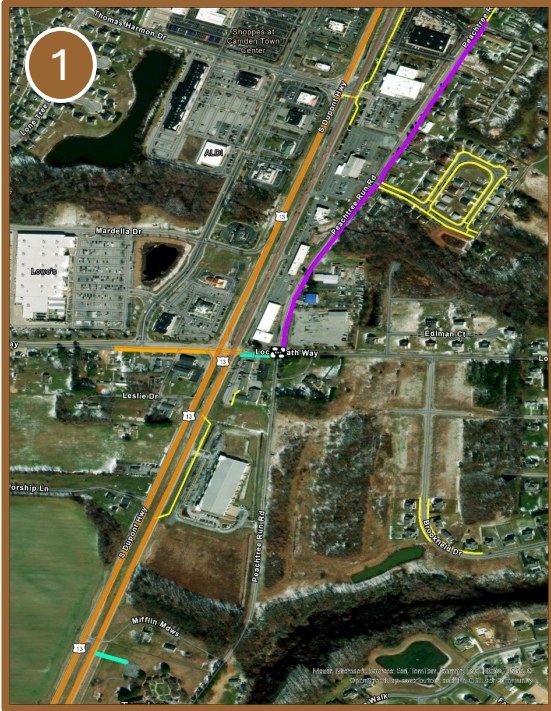


Recommendations

- Bicycle and Pedestrian
- Roadway
- Other Recommendations

Bicycle and Pedestrian Improvements:

- 1) Peachtree Run and Mifflin Meadows
- 2) S. State and Cypress Branch
- 3) Barney Jenkins and Millchop
- 4) Magnolia Area
- 5) Airport Road



Recommendations

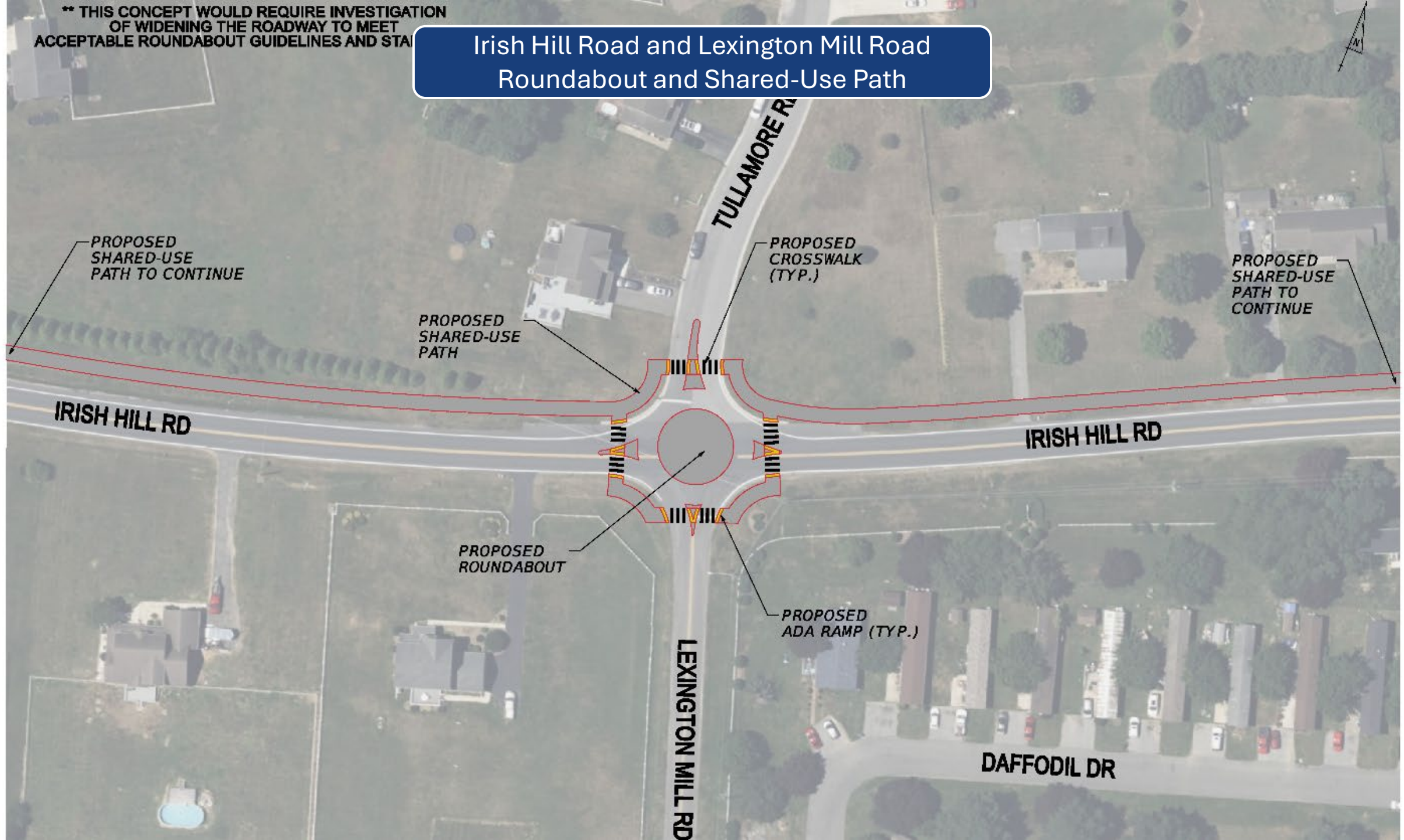
- Bicycle and Pedestrian
- Roadway
- Other Recommendations

Sorghum Mill Road Sidewalk and Crossing

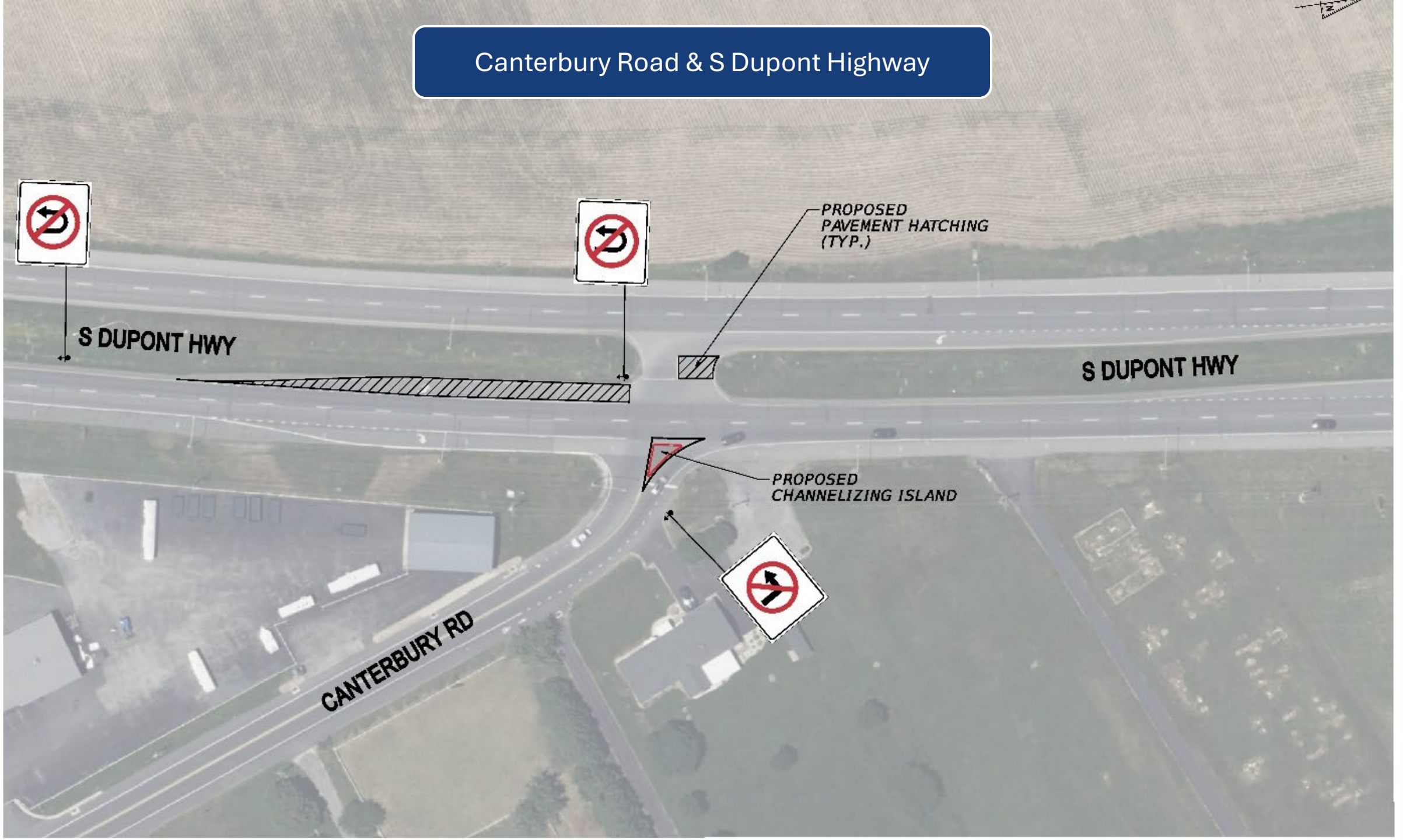


**** THIS CONCEPT WOULD REQUIRE INVESTIGATION
OF WIDENING THE ROADWAY TO MEET
ACCEPTABLE ROUNDABOUT GUIDELINES AND STANDARDS**

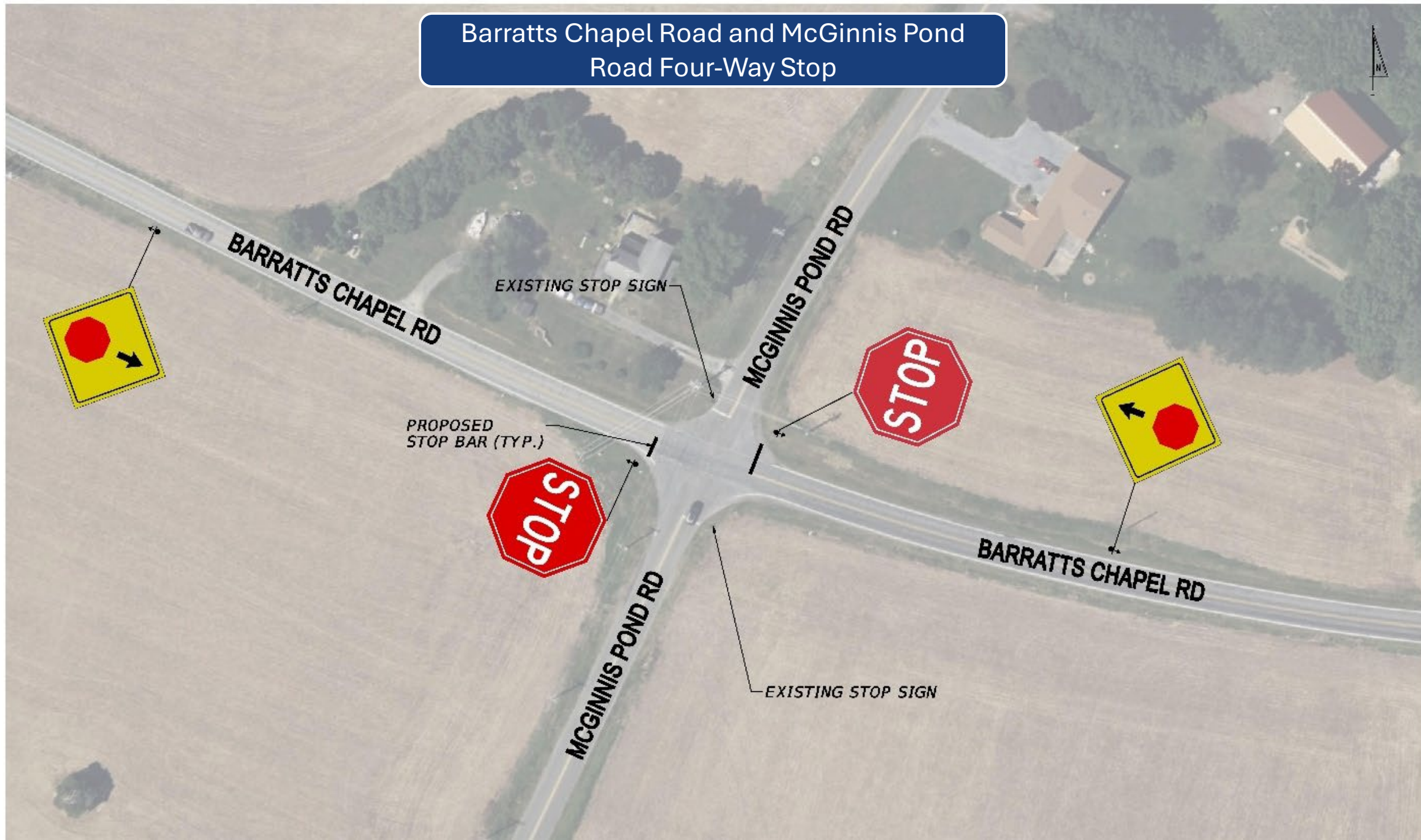
Irish Hill Road and Lexington Mill Road Roundabout and Shared-Use Path



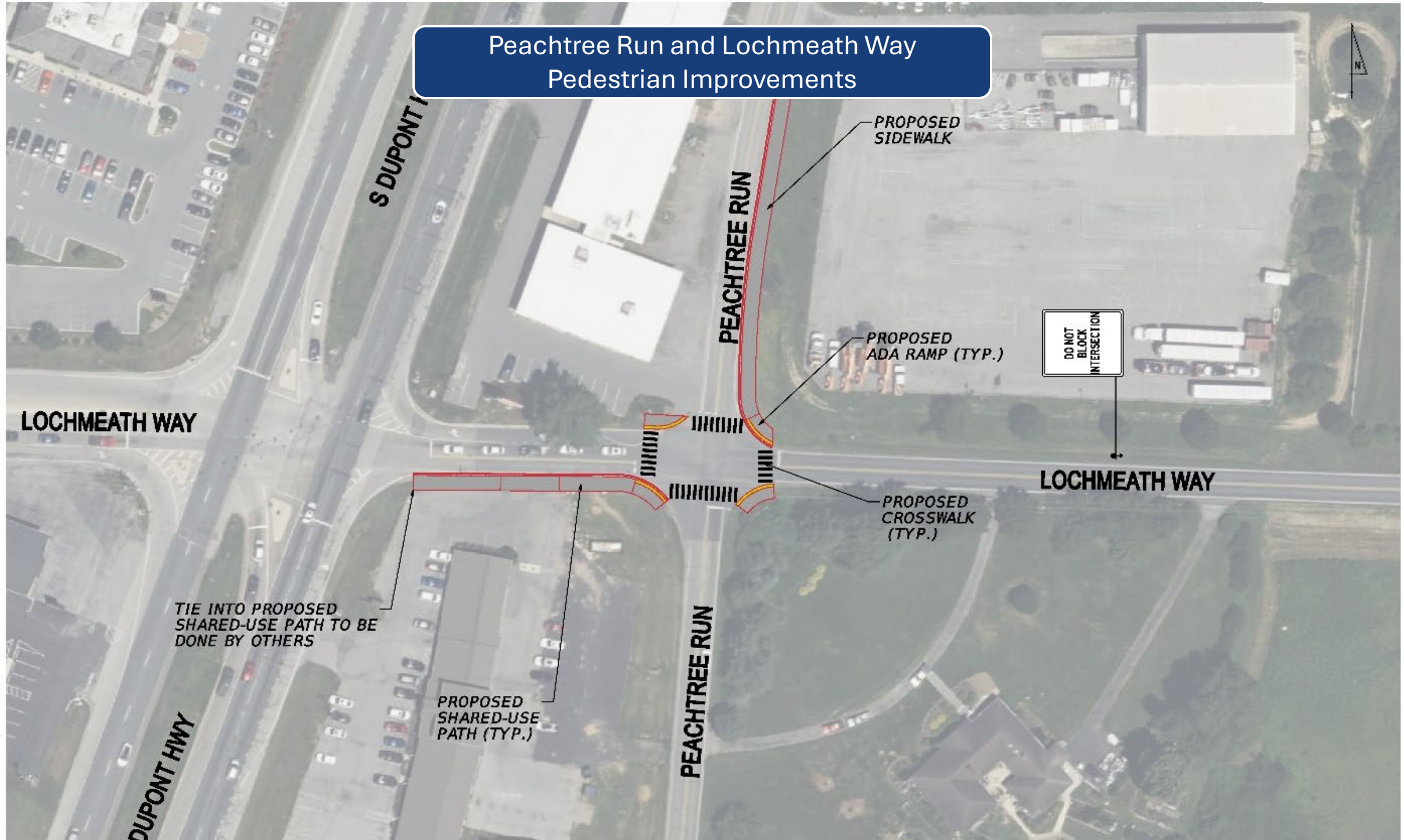
Canterbury Road & S Dupont Highway



Barratts Chapel Road and McGinnis Pond Road Road Four-Way Stop



Peachtree Run and Lochmeath Way Pedestrian Improvements



S DUPONT HWY

LOCHMEATH WAY

PEACHTREE RUN

PROPOSED
SIDEWALK

PROPOSED
ADA RAMP (TYP.)

DO NOT
BLOCK
INTERSECTION

LOCHMEATH WAY

PROPOSED
CROSSWALK
(TYP.)

PEACHTREE RUN

TIE INTO PROPOSED
SHARED-USE PATH TO BE
DONE BY OTHERS

PROPOSED
SHARED-USE
PATH (TYP.)

DUPONT HWY

Recommendations

- Bicycle and Pedestrian
- Roadway
- Other Recommendations

Other Recommendations

- SR10 Crossovers Striping
- Signal Timing Studies
- Pedestrian-scale Lighting
- Rectangular Rapid Flashing Beacons
- Rural Microtransit
- Safe Routes to School Program

Figure #	Recommendation	Responsible Party
31	Airport Road Bicycle/Pedestrian Improvements	City of Milford
31	Shared Use Path on Bowman Road	DeIDOT ATCC DeIDOT Development Coordination
31	Pedestrian Improvements to Delaware Veterans Boulevard	City of Milford
32	Shared Use Path and Sidewalk on Barney Jenkins Road	DeIDOT ATCC DeIDOT Project Development
32	Shared Use Path on Millchop Lane	DeIDOT ATCC DeIDOT Project Development
33	Shared Use Paths on S. State Street, Sorghum Mill Road, and Cypress Branch Road	DeIDOT Development Coordination DeIDOT ATCC DeIDOT Project Development
34	Shared Use Paths and Sidewalks on S. State Street, Irish Hill Road, and Clapham Road	DeIDOT Development Coordination DeIDOT ATCC DeIDOT Project Development
35 & 40	Sidewalk on Peachtree Run Road	DeIDOT ATCC DeIDOT Project Development
35 & 40	Shared Use Path on Lochmeath Way	DeIDOT Project Development (US 13 Expansion)
35	Shared Use Path Connection to Mifflin Meadows	DeIDOT Project Development (US 13 Expansion)
36	Sorghum Mill Road Sidewalk and Crosswalk	DeIDOT Development Coordination DeIDOT ATCC DeIDOT Project Development
37	Irish Hill Road & Lexington Mill Road	DeIDOT Development Coordination DeIDOT Project Development
38	Canterbury Road & South DuPont Highway	DeIDOT Project Development (Canterbury/Irish Hill)
39	McGinnis Pond Road & Barratts Chapel Road	DeIDOT Project Development DeIDOT Traffic
41	SR10 Crossovers Striping	DeIDOT Traffic



Questions or Comments?

Marc Côté, Project Manager

marc.cote@rossitg.com