



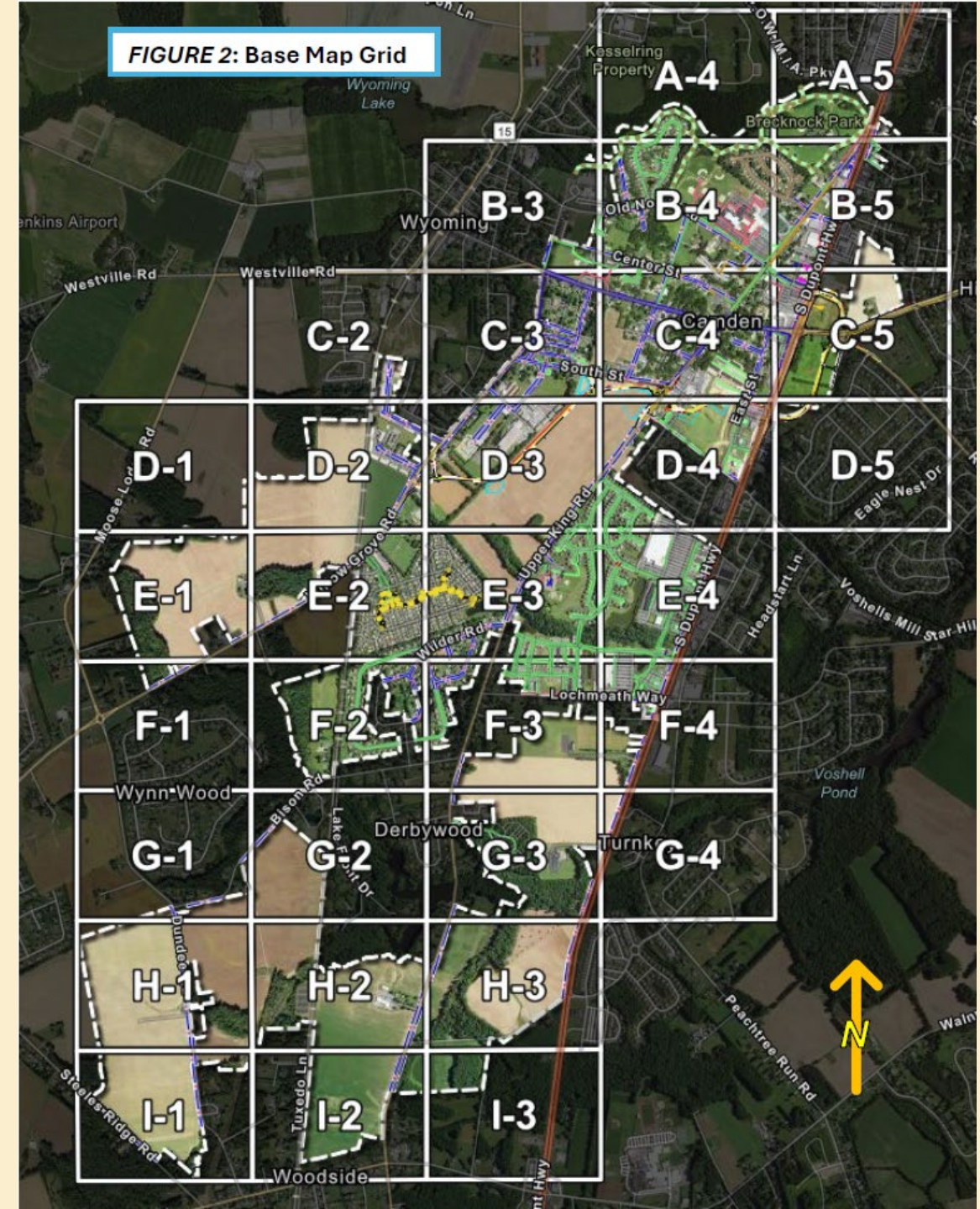
<https://doverkentmpo.delaware.gov/>

Town of Camden
Sidewalk Network
Gaps Study
August 2025

Camden Sidewalk Network Gaps Project Base Map

EXISTING CONDITIONS DATA

- Working Scale – 1" = 100'
- 32 Individual Map Panels/Field Sheets
- Reflects As-Built Conditions:
 - Existing Sidewalks
 - Existing Shared Use Paths
 - Existing Sidewalk Gap Locations



Camden - Missing Sidewalks Study (North Camden)

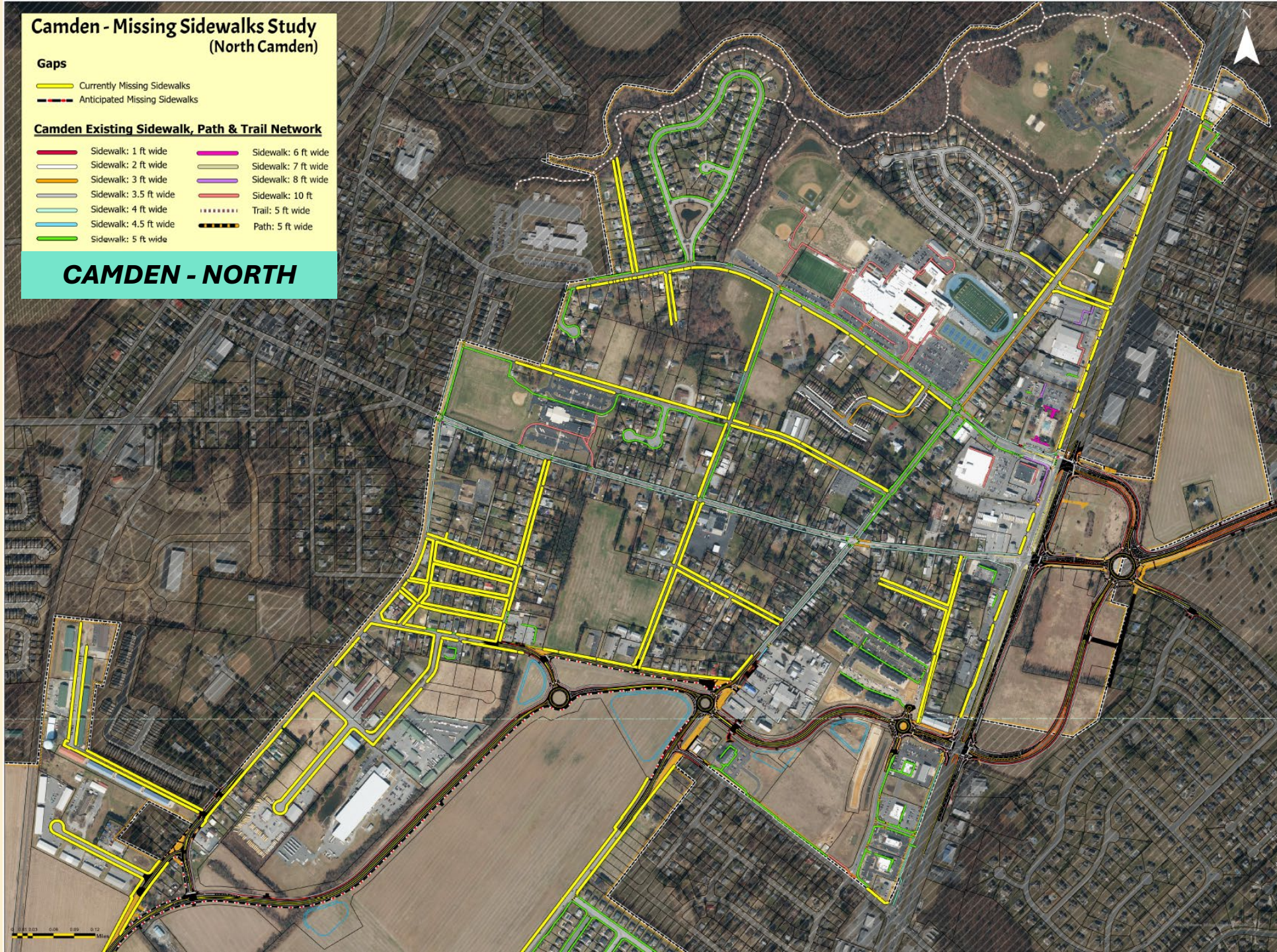
Gaps

- Currently Missing Sidewalks
- Anticipated Missing Sidewalks

Camden Existing Sidewalk, Path & Trail Network

- | | |
|-----------------------|---------------------|
| Sidewalk: 1 ft wide | Sidewalk: 6 ft wide |
| Sidewalk: 2 ft wide | Sidewalk: 7 ft wide |
| Sidewalk: 3 ft wide | Sidewalk: 8 ft wide |
| Sidewalk: 3.5 ft wide | Sidewalk: 10 ft |
| Sidewalk: 4 ft wide | Trail: 5 ft wide |
| Sidewalk: 4.5 ft wide | Path: 5 ft wide |
| Sidewalk: 5 ft wide | |

CAMDEN - NORTH



Camden - Missing Sidewalks Study (Central Camden)

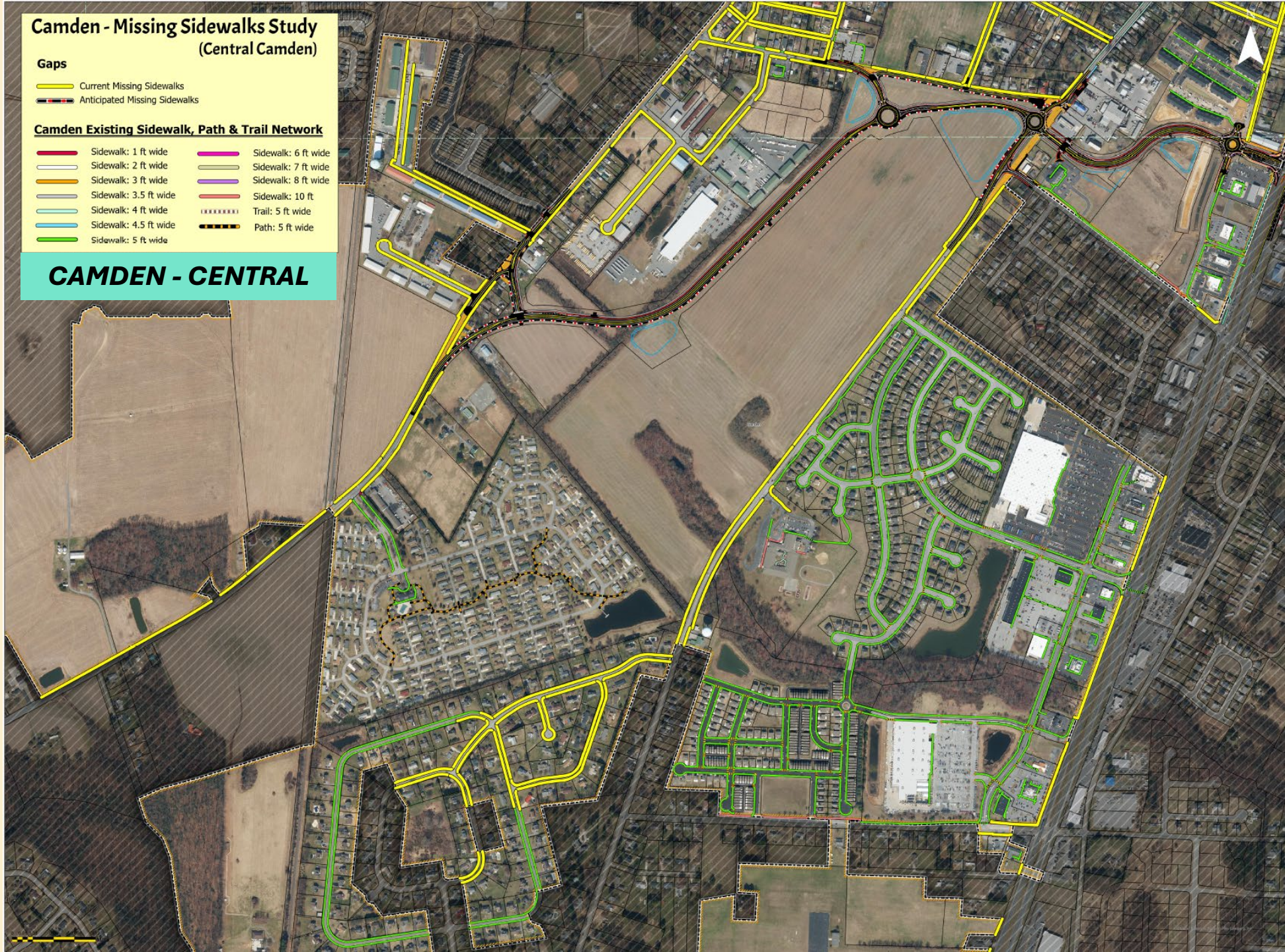
Gaps

- Current Missing Sidewalks
- Anticipated Missing Sidewalks

Camden Existing Sidewalk, Path & Trail Network

- | | |
|-----------------------|---------------------|
| Sidewalk: 1 ft wide | Sidewalk: 6 ft wide |
| Sidewalk: 2 ft wide | Sidewalk: 7 ft wide |
| Sidewalk: 3 ft wide | Sidewalk: 8 ft wide |
| Sidewalk: 3.5 ft wide | Sidewalk: 10 ft |
| Sidewalk: 4 ft wide | Trail: 5 ft wide |
| Sidewalk: 4.5 ft wide | Path: 5 ft wide |
| Sidewalk: 5 ft wide | |

CAMDEN - CENTRAL



Camden - Missing Sidewalks Study (South Camden)

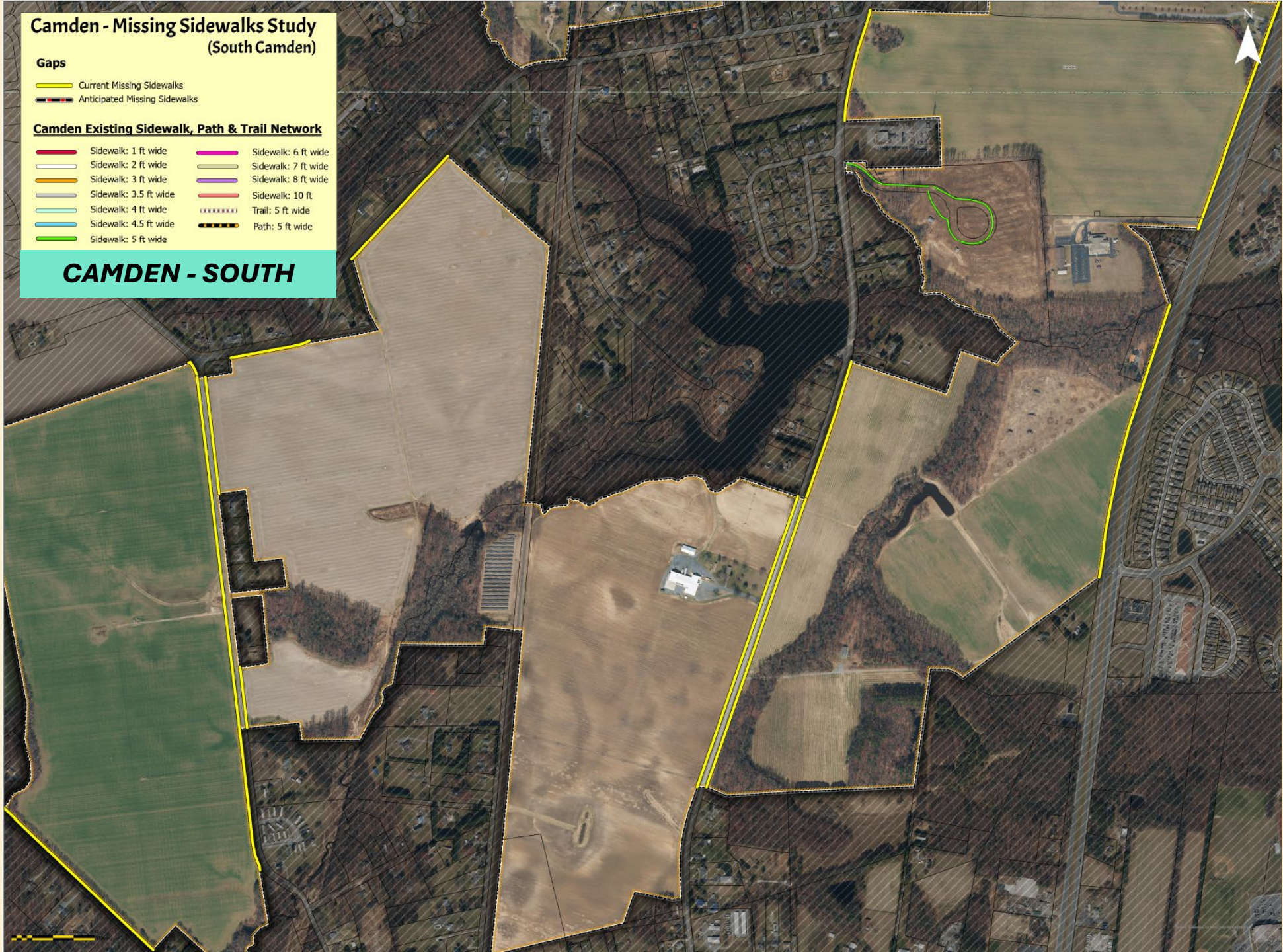
Gaps

- Current Missing Sidewalks
- Anticipated Missing Sidewalks

Camden Existing Sidewalk, Path & Trail Network

- | | |
|-----------------------|---------------------|
| Sidewalk: 1 ft wide | Sidewalk: 6 ft wide |
| Sidewalk: 2 ft wide | Sidewalk: 7 ft wide |
| Sidewalk: 3 ft wide | Sidewalk: 8 ft wide |
| Sidewalk: 3.5 ft wide | Sidewalk: 10 ft |
| Sidewalk: 4 ft wide | Trail: 5 ft wide |
| Sidewalk: 4.5 ft wide | Path: 5 ft wide |
| Sidewalk: 5 ft wide | |

CAMDEN - SOUTH



SIDEWALK GAPS SUMMARY

- **32 Separate Roadways with Pedestrian Gaps**
- **69 Individual Sidewalk/Shared Use Path Gaps¹**
- **12.96 Linear Miles +/- of Gaps¹**

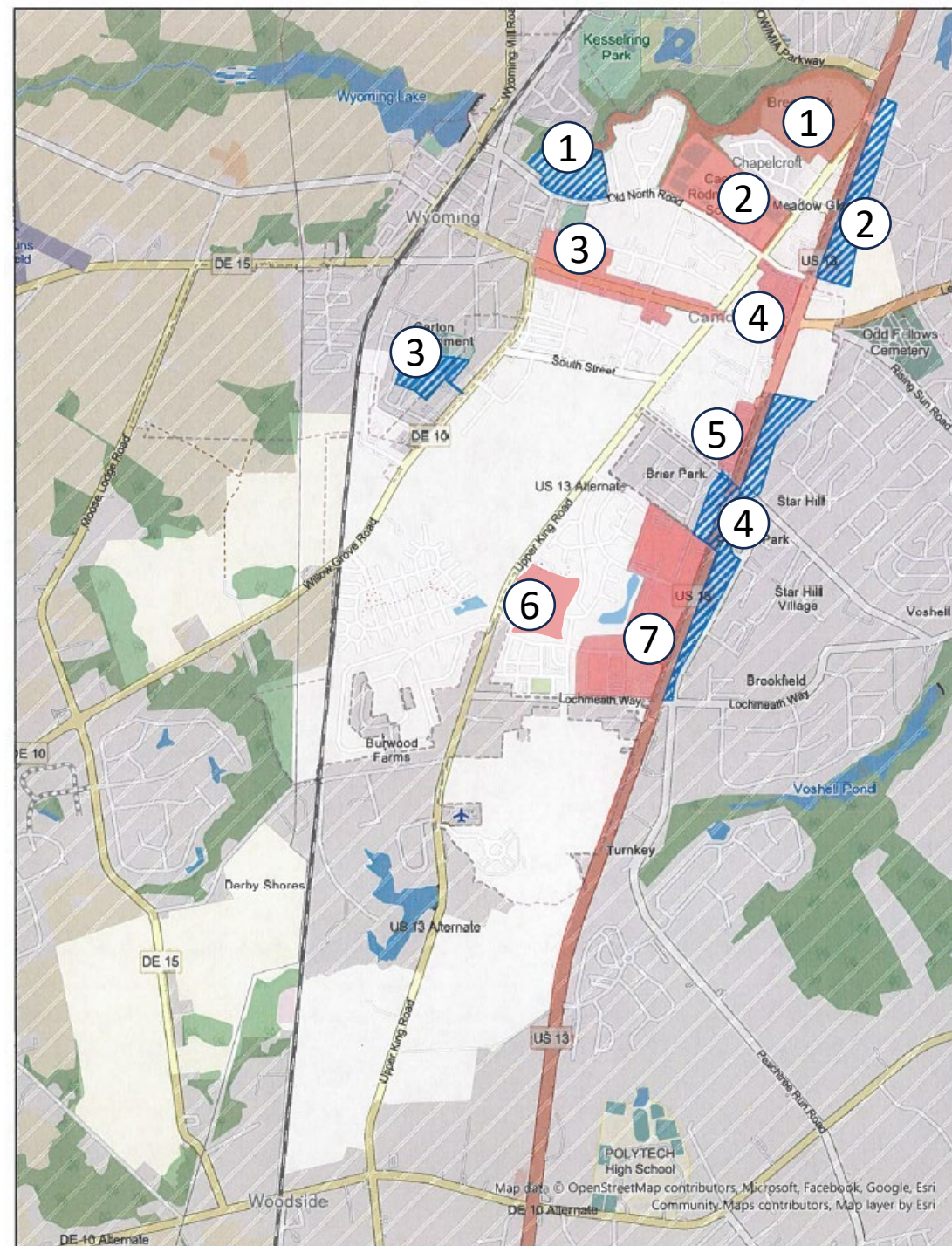
1 – Excludes US Route 13 Frontages



Examples of Existing Sidewalk Terminations

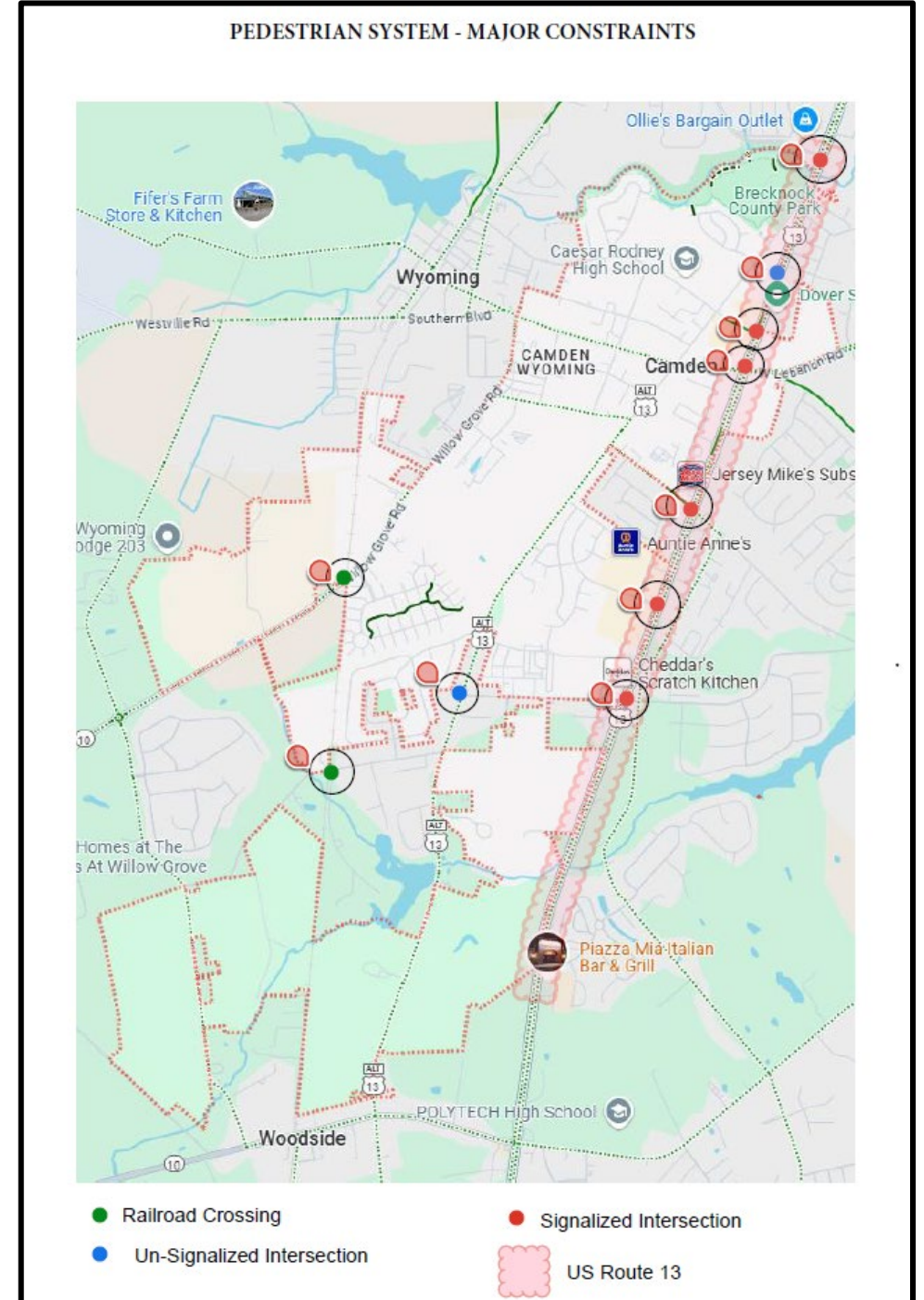
Primary Pedestrian Trip Generators

GENERATOR		COMMENT
1	Brecknock Park	Inside Town Limits
2	Caesar Rodney High School	Inside Town Limits
3	Fifer Middle School; C-W Fire Company; Wyoming Ave	Inside Town Limits
4	Retail Shopping Area	Inside Town Limits
5	Retail Shopping Area	Inside Town Limits
6	Nellie Stokes School	Inside Town Limits
7	Camden Town Center	Inside Town Limits
GENERATOR		COMMENT
1	W.B. Simpson Elementary School	Outside Town Limits
2	Retail/Service Commercial Area	Outside Town Limits
3	Camden-Wyoming Little League Complex	Outside Town Limits
4	Retail/Service Commercial Area	Outside Town Limits



Primary System Constraints

- **US Route 13**
- **Lochmeath Way**
- **Legacy Constraints**
- **Railroad Crossings**
- **West Camden Bypass (Temporary)**
- **Public Resistance**



Constraints & Non-Conforming Sidewalks



Utility Conflicts

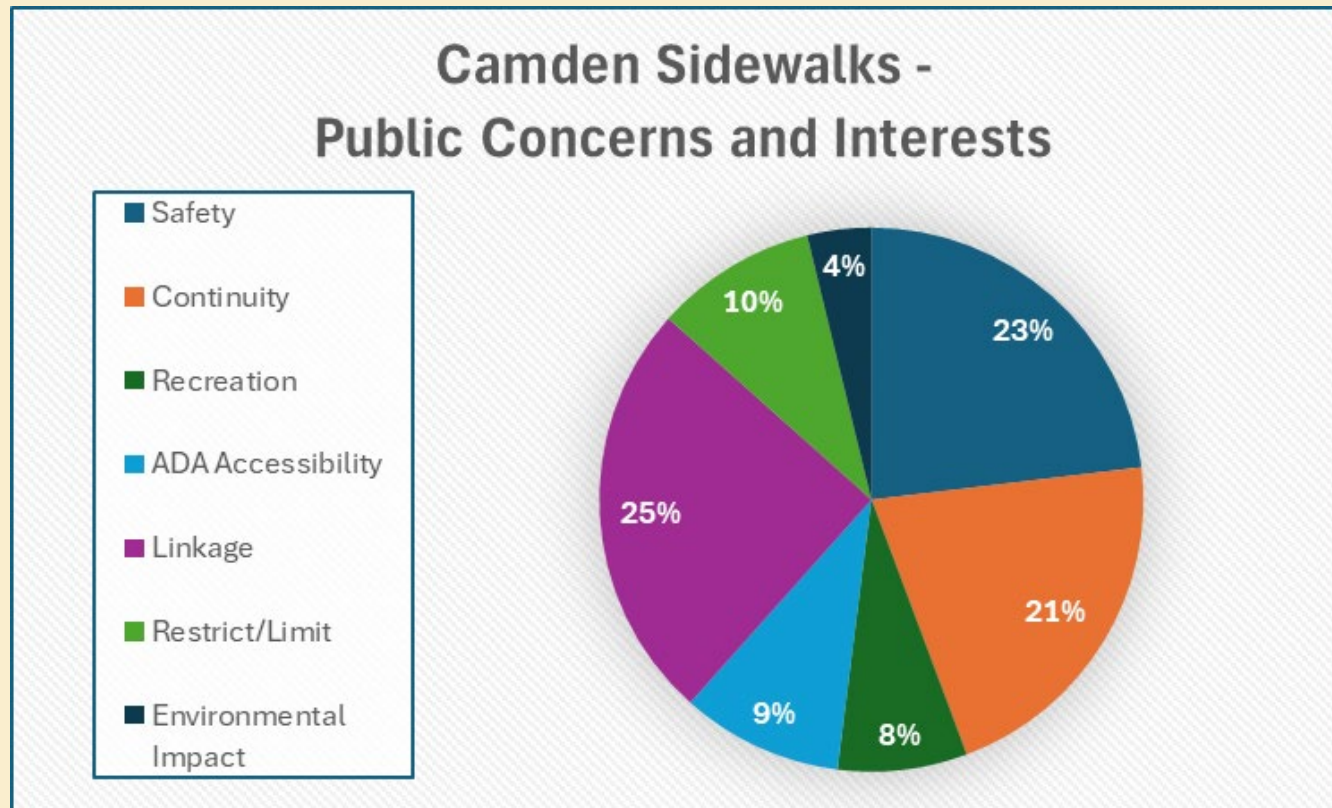
ADA Conformity Issues

Possible Mitigation Measures



PUBLIC ENGAGEMENT

- **Public Workshop – May 20th , 2025**
- **Online Survey – Open through June 3rd , 2025**



PUBLIC WORKSHOP

**Camden Sidewalk
Network Gap Study**

Dover Kent Metropolitan Planning Organization has been engaged by the Town of Camden to develop a Plan for improving the Pedestrian Environment throughout Town. Please join us at this upcoming Public Workshop to review existing conditions and to share your ideas on the best approaches for improving the Sidewalk Network in Camden!

TUESDAY, MAY 20th, 2025—5PM to 7PM

CAMDEN TOWN HALL
1783 Friends Way

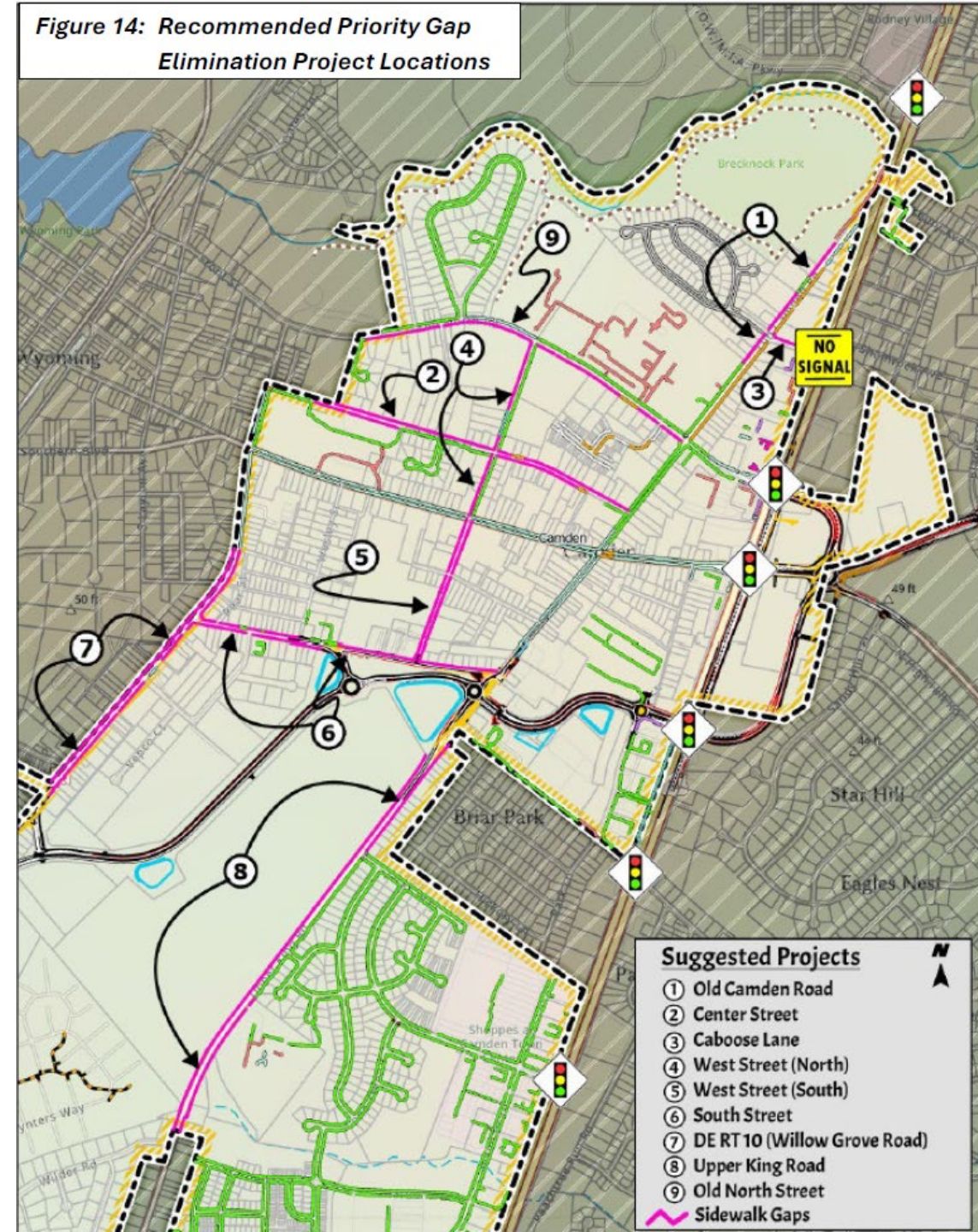
DOVER KENT MPO
METROPOLITAN PLANNING ORGANIZATION

THE TOWN OF CAMDEN, NJ
FOUNDED 1703

Recommended Priority Gaps for Elimination



Figure 14: Recommended Priority Gap Elimination Project Locations



General Recommendations

- **Draft Ordinances for:**
 - **Marked Crosswalks**
 - **Lighting of Pedestrian Routes**
 - **Sidewalk Ordinance Considerations**
- **Recommendations Adapted from:**
 - ***“Suburban & Community Street Design Standards Project”***
 - ***Produced by Dover Kent MPO – June 2000***

Questions?

Send us an email:

Michael.PetitdeMange@doverkentmpo.org

Thank you!